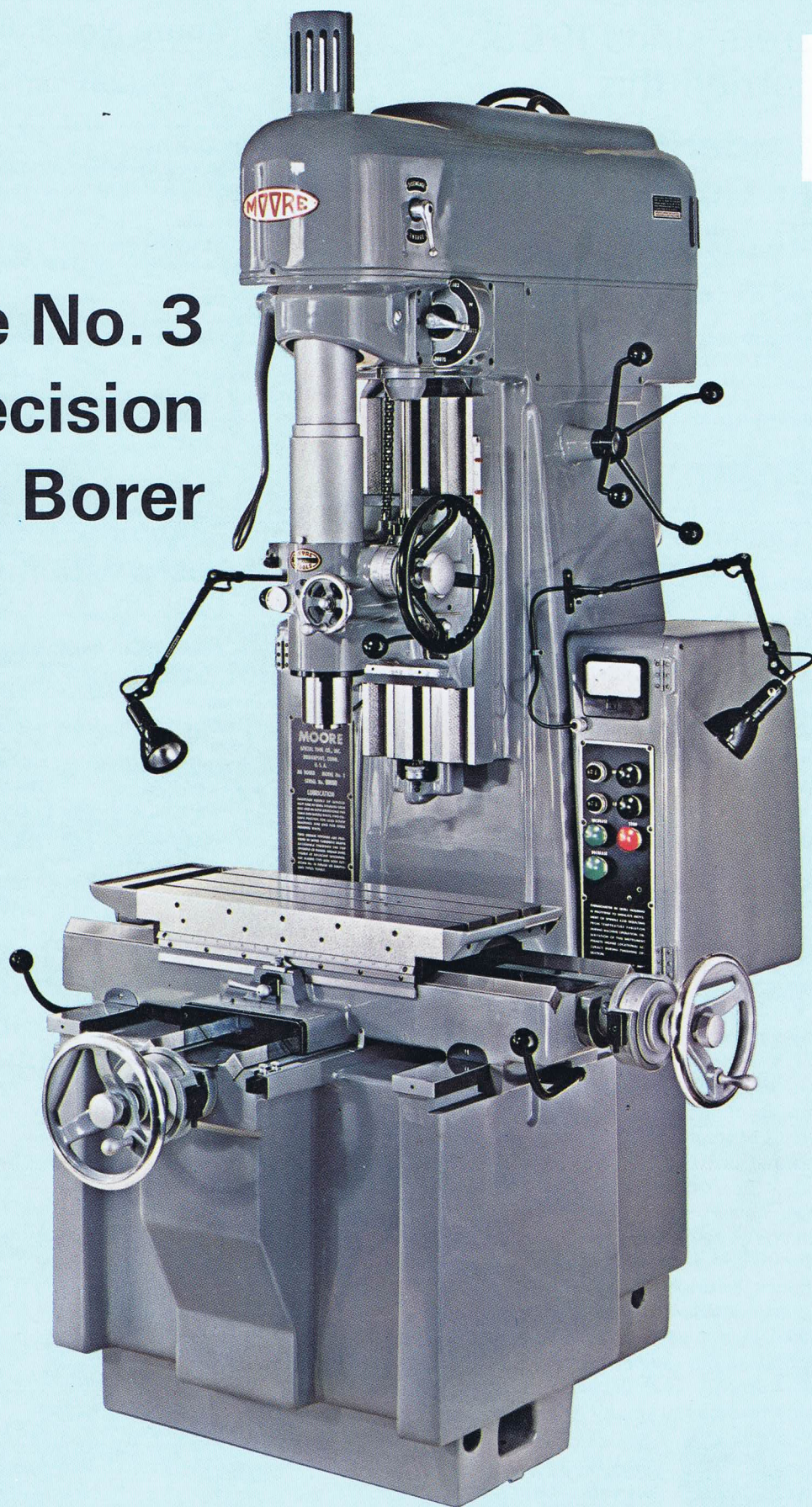




# Moore No. 3 Precision Jig Borer



...with ten-year guarantee of accuracy plus durability



All No. 3 Moore  
Jig Borers since 1958  
have carried this...

## Unprecedented 10-Year Guarantee of Millionths' Accuracy

### Published Tolerances

#### *Longitudinal Travel*

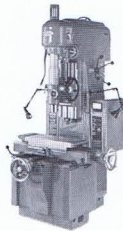
Greatest error in any inch . . . 30 millionths  
Greatest error in 18 inches . . 90 millionths

#### *Cross Travel*

Greatest error in any inch . . . 30 millionths  
Greatest error in 11 inches . . 90 millionths

#### *Squareness*

Compound slide . . . . . 60 millionths  
Full travel spindle housing . . . 90 millionths  
Full travel spindle . . . . . 90 millionths



### 10-year Deviation Guarantee

Lead Screws . . . . . 50 millionths  
Quill fit or clearance  
(Jig Borer) . . . . . 20 millionths  
Vertical slide fit or clearance  
(Jig Grinder) . . . . . 50 millionths  
Compound slide squareness . . 20 millionths  
Base ways . . . . . 30 millionths  
Table ways . . . . . 30 millionths  
Squareness of spindle to  
plane of travel . . . . . 50 millionths

Moore can now, with confidence, guarantee the accuracy-plus durability of hardened, ground and lapped lead screws and ways, plus the other locating features of its No. 3 Jig Borers and No. 3 Jig Grinders. Here's why:

The first No. 3 Moore Jig Borer built has now been operating in our toolroom for 5 years, an average of 2,300 hours per year. We have also inspected several other No. 3 machines in customers' plants. Our experience with hardened, ground and lapped lead screws now goes back 30 years. All of this history has provided us with sufficient data to project the performance of our No. 3 machines over a 10-year period.

As a result, we will now guarantee that the basic locating features of the standard No. 3 Moore Jig Borer and No. 3 Moore Jig Grinder will not wear or deviate in normal use beyond published tolerances over a 10-year period more than the specified amounts shown above.

This guarantee is retroactive to include the No. 3 Moore Jig Borers and Jig Grinders already built and in use. It applies to original owners only and is in addition to our unqualified 1-year guarantee.

You can call in our service man to check your machine any time, at our regular charge. If this check reveals wear in excess of that specified above, we will correct the machine promptly at our expense.



April 1, 1961

*Rich Moore*

Richard F. Moore, President  
Moore Special Tool Co., Inc.  
800 Union Avenue  
Bridgeport 7, Conn.

Since 1934 Moore has produced over 7,000 Jig Borers, Jig Grinders, and Universal Measuring Machines.

## Accuracy of positioning for the Moore No. 3 Jig Borer

11 in. x 18 in. (280mm x 450mm) Travel

#### *Longitudinal Travel*

Greatest error in any inch or (30mm) . . . 30 millionths in. (0.75 $\mu$ m)  
Greatest error in 18 inches or (450mm) . . 90 millionths in. (2.3 $\mu$ m)

#### *Cross Travel*

Greatest error in any inch or (30mm) . . . 30 millionths in. (0.75 $\mu$ m)  
Greatest error in 11 inches or (280mm) . . 90 millionths in. (2.3 $\mu$ m)

#### *Squareness*

Compound slide (full travel) . . . . . 60 millionths in. (1.5 $\mu$ m)  
Travel (spindle housing) in 12 inches or (300mm)  
90 millionths in. (2.3 $\mu$ m)

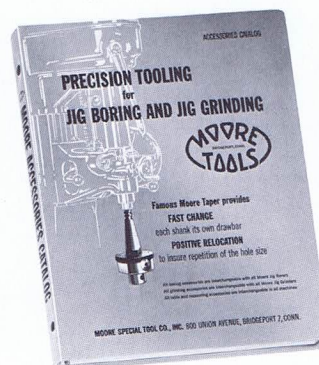
#### *Alignment*

Spindle travel in 5 inches or (125mm) . . . 90 millionths in. (2.3 $\mu$ m)

## The following items are normally purchased with the Jig Borer:

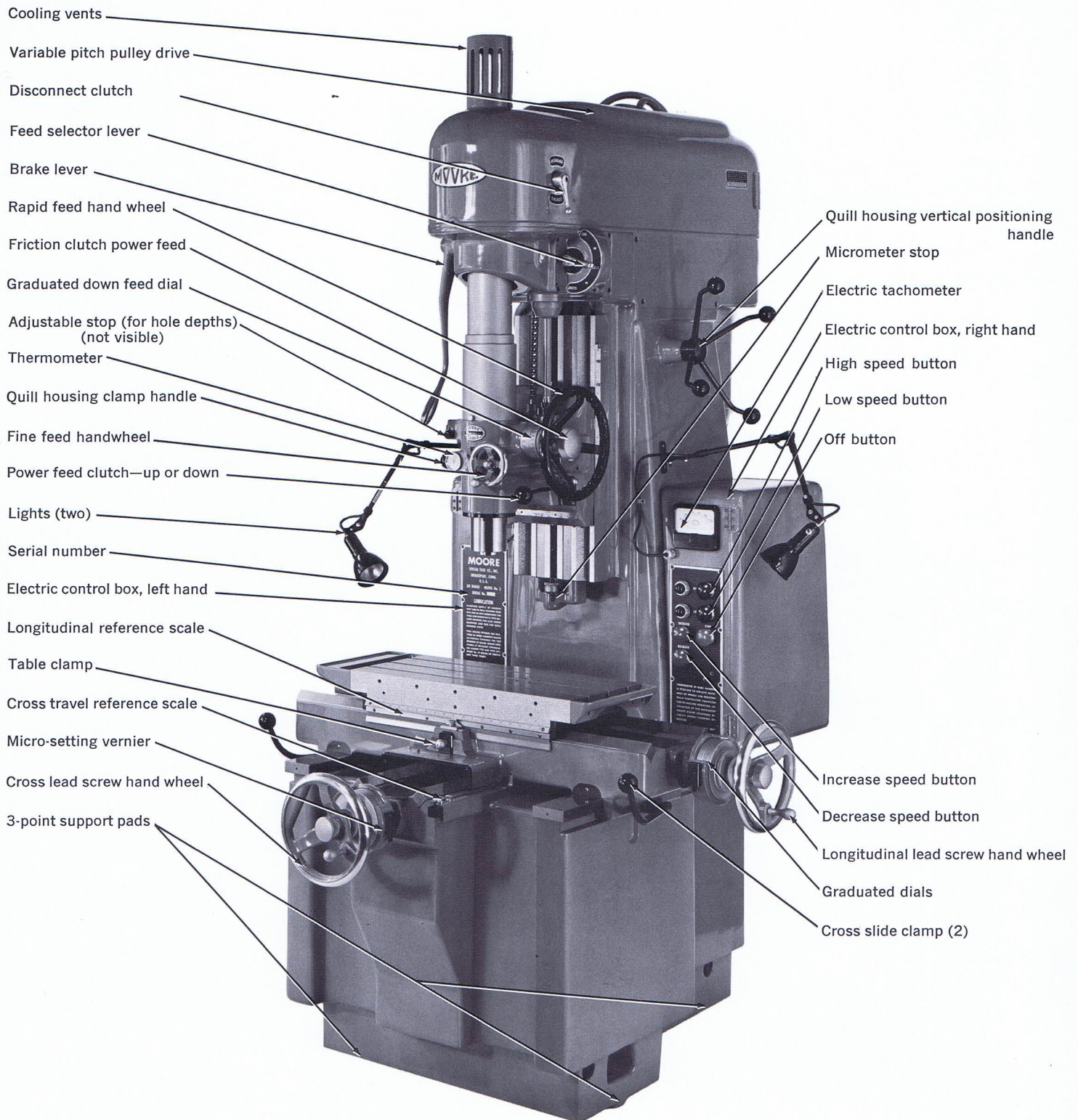
- 1—Moore Precision boring chuck set  
Bores any size hole up to  
5 in. (125 mm) in dia. . . . . Cat. No. 3090A  
Metric . . . . . Cat. No. 3090A-M
- 1—Keyless drill chuck 3/8 in. (9,53 mm)  
capacity . . . . . Cat. No. AC-2
- 1—Indicator Set (Refer to Moore's  
Precision Accessories Catalog for your choice)
- 1—Set of bolts, straps, and heel rests . . . . . Cat. No. 3300A
- 1—Set of parallel set-up blocks . . . . . Cat. No. 3225A

## Also available as options: Numerical Control, Digital Readout and Printout Equipment



For the wide range of precision accessories offered, and those items available in metric equivalents, refer to Moore's Precision Accessories Catalog. Write for your free copy.



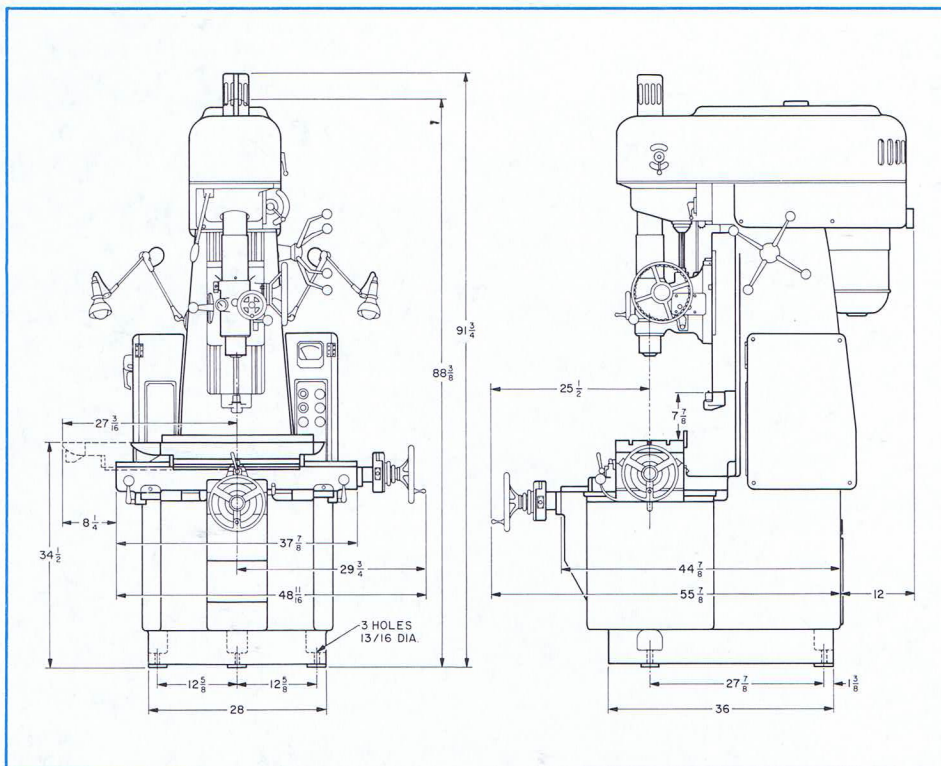


## Features of the No. 3 Jig Borer

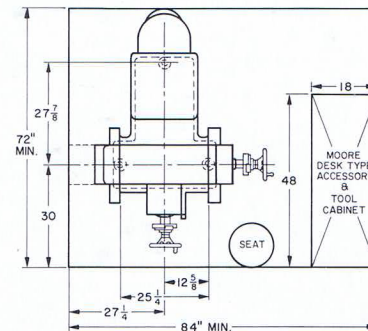
- |   |  |
|---|--|
| <input type="checkbox"/> Locate and Bore Holes to less than a Tenth | <input type="checkbox"/> Nitralloy Lead Screws                                 |
| <input type="checkbox"/> Meehanite Iron Castings                    | <input type="checkbox"/> 60-2250 RPM Infinitely Variable Speed Drive           |
| <input type="checkbox"/> Invar Housing                              | <input type="checkbox"/> 10-Year Guarantee                                     |
| <input type="checkbox"/> Hardened, Ground and Lapped Steel Ways     | <input type="checkbox"/> Convenience of Operation—designed around the Operator |



# Outline and foundation chart



## Space and position suggestions



## Specifications

### Range

Table working surface	11 in. x 24 in. (280mm x 610mm)
Table travel longitudinal	18 in. (450mm)
Table travel crosswise	11 in. (280mm)
Table top to spindle end	3 7/8 in. x 20 13/16 in. (98mm x 530mm)
Vertical adj. of quill housing	11 15/16 in. (300mm)
Spindle quill travel	5 in. (125mm)
Spindle center to column ways	10 in. (250mm)
Spindle center to column below ways	13 3/4 in. (350mm)

### Maximum Boring Capacity:

Tool Steel	5 in. (130mm)
Soft Steel	7 in. (180mm)
Spindle	Sensitive enough for drilling holes with #80 drill (.0135 in.) (0,3mm)
Spindle speeds	Infinitely variable with two-speed motor—60-2250 RPM
Spindle Feed	3 Feeds—.00075 in. (0,02mm)—.0015 in. (0,04mm) .003 in. (0,075mm) per spindle revolution

### Weights and floor space

Machine with regular equipment, including motor	3860 lbs. (1750 Kg)
Shipping weight, domestic and export	4560 lbs. (2100 Kg)
Floor space	72 in. x 84 in. (1800mm x 2200mm)

### Standard Equipment

Includes 1 & 2 H.P. 2-speed motor, 220 or 440 Volts, 50 or 60 cycles, 3-phase, internal wiring, stop-slow-fast pushbutton switches, ratio motor for changing spindle speeds, magnetic relay, with thermal overload and under-voltage protection, transformer to step down current to 110 volts for controls and lighting. Machine ready to be connected to electrical power line.

### Standard Equipment continued

	Part No.
1—Straight edge	5192
1—Micrometer stop	5215SA
1—1-in. stop block	2409-1
or 25mm block	2409-1M
1—2-in. stop block	2409-2
or 50mm block	2409-2M
1—4-in. stop block	2409-3
or 100mm block	2409-3M
1—Open end wrench 3 1/32 in. x 1 1/4 in.	635D
5—"T" wrenches:	
1—3/32 in. hex x 3 in. long	
1—1/8 in. hex x 6 in. long	
1—3/16 in. hex x 6 in. long	
1—5/32 in. hex x 6 in. long	
1—1/4 in. hex x 6 in. long	
2—"L" wrenches	
1—1/16 in. hex	
1—5/64 in. hex	
1—Umbrako Hex Key Fold No. 4 (for metric machines only)	
1—Qt. Sunoco Way Lubricant (SAE-80) (2 qts. for export)	
2—Hand wheels	2007C
1—Column bib	5639
2—Table bibs	6194
1—Cross slide bib	6195
1—Spindle cap	5240
1—Jig Borer test piece (export only)	3295
2—G.E. 6 IF worklight bulbs (spare) (Export: 8 IF)	
3—Fuses: FRS-5A (440V) or FRS-10A (220V) spares	
1—Fuse: FNM-2 1/2 A (spare)	
1—Fuse: FNM-1 1/2 A (spare)	
1—Grease gun with fittings	
1—14 oz. Cartridge No. 2 multi-purpose Lithium base grease. (Vendors are: Shell, Gulf, Kendall & Socony)	
1—Operation & Maintenance Manual	
1—Accessories Catalog	

We reserve the right to improve, change or modify any or all products manufactured or sold by Moore. This does not incur any obligation to make like changes on Moore products previously sold.

# MOORE Special Tool Co., Inc.

Bridgeport, Conn. 06607 • European Office, Foerrlibuckstrasse 110, 8005 Zurich, Switzerland

Manufacturers of Jig Borers, Jig Grinders, Universal Measuring Machines, Rotary Tables, Tool Room and Metrology Products.