

BEAVER POWER TOOLS

# BEAVER

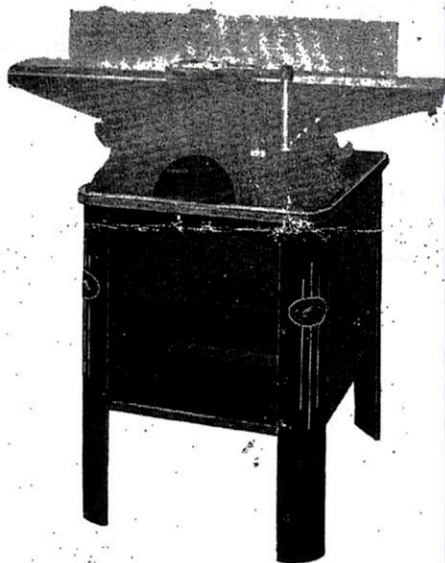
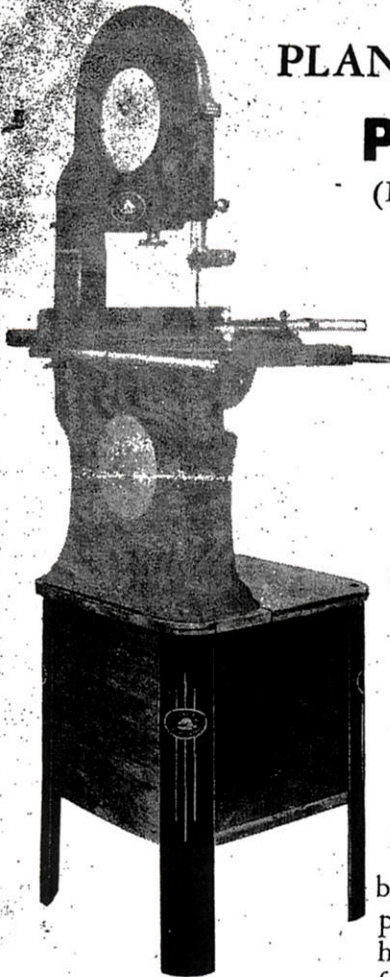
*Build-it-Yourself*

## POWER TOOL STANDS

FOR BAND SAW,  
PLANER-JOINTER and CIRCULAR SAW

**Price - \$11.95 set**

(LEGS AND HARDWARE ONLY)



These BEAVER Power Tool stands for which the legs and plans may be purchased, have been designed to provide sturdy, easy-to-build supports for your BEAVER Power Tools. There is ample room in them to house the motor where required and provide a maximum of shelf space for small tools and accessories.

The legs are of typical BEAVER semi-steel cast construction and all necessary holes have been cast and drilled in them. All hardware required — nuts, bolts, washers and screw nails — to complete the assembly of any one of the three stands illustrated is supplied.

The plans have been drawn to enable either skilled craftsman or hobby enthusiast to readily understand them. They show all necessary dimensions and the relationship of all panels in assembly. Although plywood is specified it need not necessarily be used. Masonite or metal may be substituted if desired.

This set of legs may be used to build a stand for your BEAVER Band Saw, Circular Saw or Planer-Jointer. By following the step by step instructions below the plans, you will find it a simple and interesting task to complete whichever stand is required.

### HARDWARE SUPPLIED

- |  |   |   |
|--|---|---|
| 6 Carriage Bolts $\frac{5}{16}$ " x $1\frac{1}{2}$ " | 2 Machine Bolts $\frac{5}{16}$ " x $2\frac{1}{2}$ "       | 6 Rd. Hd. Wood Screws No. 10 x $1\frac{1}{2}$ " |
| 2 Carriage Bolts $\frac{5}{16}$ " x 2"               | 18 Ft. Hd. Stove Bolts $\frac{3}{16}$ " x $\frac{5}{8}$ " | 4 Flat Washers for $\frac{5}{16}$ " bolt        |
| 2 Machine Bolts $\frac{5}{16}$ " x $1\frac{1}{2}$ "  | 14 Rd. Hd. Wood Screws No. 8 x 1"                         | 18 Flat Washers for $\frac{3}{16}$ " bolt       |
| 4 Machine Bolts $\frac{5}{16}$ " x 2"                |   |   |

**Order From Your Dealer Now**

DESIGNED AND MANUFACTURED BY

THE CALANDER FOUNDRY & MFG. CO. LTD.

# PLANER-JOINTER STAND

On  $\frac{3}{4}$ " plywood lay out the top and shelf panels locating all holes and openings shown on the plans.

On  $\frac{1}{4}$ " plywood lay out the end and rear panels again locating all holes. Also lay out the chip deflector back on  $\frac{1}{4}$ " plywood.

Lay out the chip deflector supports on  $\frac{5}{8}$ " pine. This may be laid out as a rectangle  $8\frac{7}{8}$ " x  $10\frac{1}{2}$ " and cut diagonally to make the two pieces required. Cut one batten to size shown on bill of material.

Cut all panels and drill all holes as noted on plans. A hole drilled in each corner of the opening in the top will simplify the cutting of the opening.

Sand the edges of the top. A coat of white shellac or varnish may be applied either before or after assembly.

Using  $\frac{3}{16}$  x  $\frac{5}{8}$ " flat head machine screws fasten the rear legs No. 1001 to the rear panel. Do not neglect to use the washers between the wood and the nuts.

Fasten the side panels to the rear legs and the front legs to the side panels in the same manner.

Place the shelf in position and fasten securely with  $\frac{5}{16}$  x  $1\frac{1}{2}$ " carriage bolts. Locate the battens on underside and fasten with flat head wood screws No. 10 x  $1\frac{1}{2}$ " long.

Set the top on, locate the jointer in position and line up the holes in the front of the jointer with the holes in the top and the legs and fasten with  $\frac{5}{16}$  x 2" machine bolts.

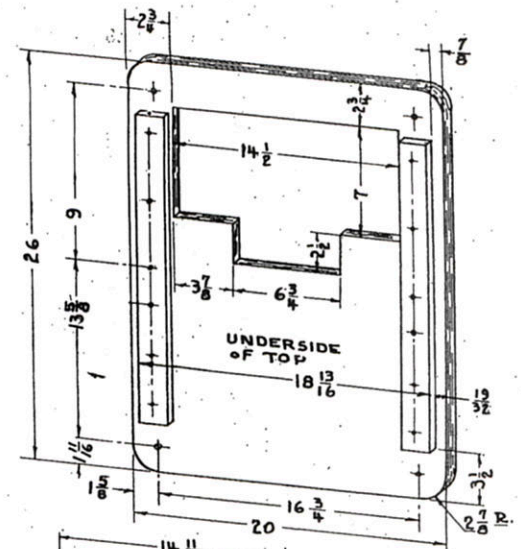
Fasten the rear of the top to the rear legs with  $\frac{5}{16}$  x  $1\frac{1}{2}$ " carriage bolts and the rear of the jointer to the top with  $\frac{5}{16}$  x 1" machine bolts.

Using No. 8 round head wood screws secure the top of the side panels to the inside battens.

Mount your motor in position ready to operate before mounting the chip deflector.

Fasten the back of the chip deflector to the sloping sides of the supports with No. 8 round head wood screws as shown in the plans.

Locate the assembly in the opening with the top of the supports flush with the table top and fasten with wood screws.

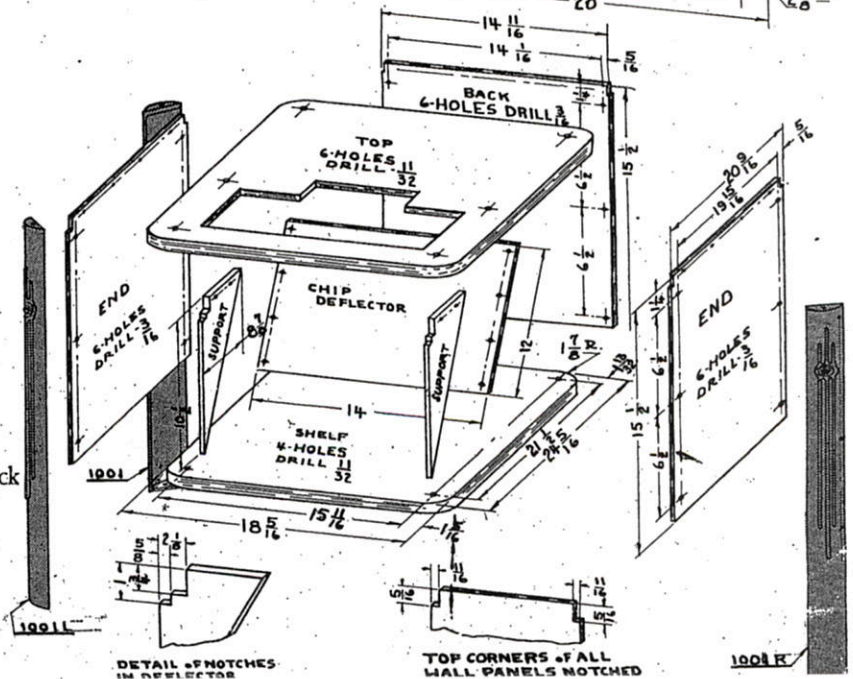


## BILL OF MATERIAL FOR PLANER-JOINTER STAND

No. of Pcs.	Size	Material	Used For
1	26" x 20"	$\frac{3}{4}$ " Plywood	Top
1	$24\frac{5}{16}$ " x $18\frac{5}{16}$ "	$\frac{3}{4}$ " Plywood	Shelf
2	$20\frac{7}{16}$ " x $15\frac{1}{2}$ "	$\frac{1}{4}$ " Plywood	Ends
1	$14\frac{11}{16}$ " x $15\frac{1}{2}$ "	$\frac{1}{4}$ " Plywood	Back
1	14" x 12"	$\frac{1}{4}$ " Plywood	Chip Deflector Back
1	$8\frac{7}{8}$ " x $10\frac{1}{2}$ " x $\frac{5}{8}$ "	Pine	Chip Deflector Supports

(The above Pc. to be cut diagonally to make 2 Pcs.)

2	19" x $1\frac{7}{8}$ " x $\frac{7}{8}$ "	Pine	Battens
---	--	------	---------



# BAND SAW STAND

On  $\frac{3}{4}$ " plywood lay out the top and shelf panels locating all holes shown on the specifications. On  $\frac{1}{4}$ " plywood lay out the two side panels and rear panel. All holes should be marked on these panels. Do not neglect to lay out the notches shown at the bottom of the plans.

Cut all panels to size and drill all holes to size noted on plans. To simplify cutting out the opening in the top panel it is advisable to drill a hole in each corner of the opening to aid in starting the saw cut. Sand the edge of the top only. Cut one batten to size shown on bill of material. When all panels are cut and all holes drilled you are ready to start assembly.

The panels may be given a coat of white shellac or varnish before or after assembly as desired.

Locate the batten in position on the underside of the top and fasten securely with three No. 10 x  $1\frac{1}{2}$ " flat head wood screws. Using  $\frac{3}{16}$ " flat head screws supplied fasten the rear legs No. 1001 to the rear panel. Do not neglect to use the washers between the wood and nuts.

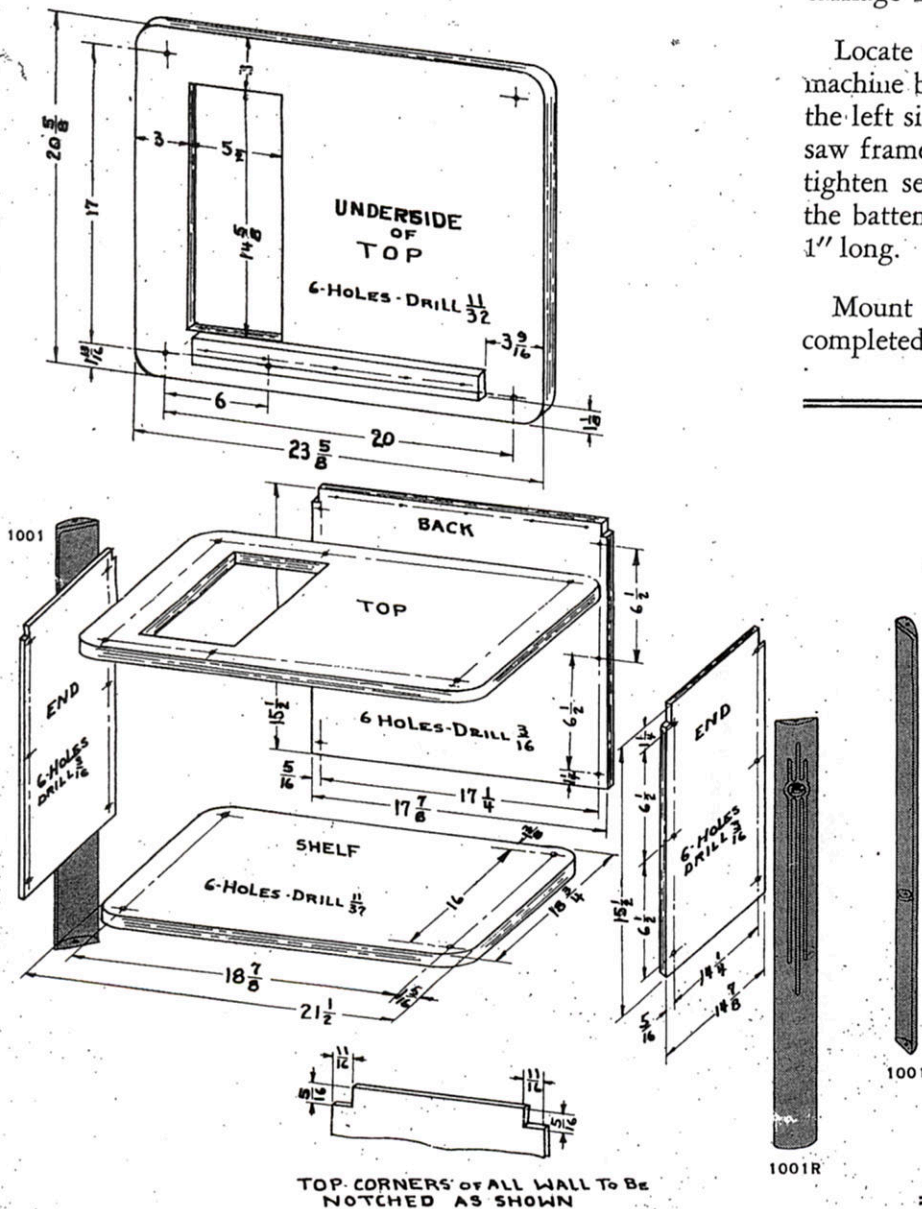
Bolt the side panels to the rear legs and then bolt the front legs to the side panels.

Using the same size bolts, assemble the side panels to the rear legs and then the front legs to the side panels.

Locate the shelf in position and tighten in place with  $\frac{5}{16}$  x  $1\frac{1}{2}$ " long carriage bolts. Set the top on and fasten the right hand side down with  $\frac{5}{16}$  x  $1\frac{1}{2}$ " carriage bolts.

Locate the Band Saw in position and, using  $\frac{5}{16}$  x 2" machine bolts through the saw frame, top and legs, on the left side and  $\frac{5}{16}$  x  $1\frac{1}{2}$ " machine bolts through the saw frame and top on the right side of the saw frame, tighten securely. Fasten the top of the back panel to the batten using six round head wood screws No. 8 x 1" long.

Mount your motor in position and the unit is completed.



## BILL OF MATERIAL FOR BAND SAW STAND

No. of Pcs.	Size	Material	Used For
1	20 $\frac{5}{8}$ " x 23 $\frac{5}{8}$ "	$\frac{3}{4}$ " Plywood	Top
1	21 $\frac{1}{2}$ " x 18 $\frac{3}{4}$ "	$\frac{3}{4}$ " Plywood	Shelf
2	15 $\frac{1}{2}$ " x 14 $\frac{7}{8}$ "	$\frac{1}{4}$ " Plywood	Side Panels
1	15 $\frac{1}{2}$ " x 17 $\frac{7}{8}$ "	$\frac{1}{4}$ " Plywood	Rear Panel
1	16 $\frac{1}{2}$ " x 1 $\frac{1}{2}$ " x 7 $\frac{7}{8}$ "	Pine	Batten

# CIRCULAR SAW STAND

On  $\frac{3}{4}$ " plywood lay out the top and shelf locating all holes and openings shown on the plans.

On  $\frac{1}{4}$ " plywood lay out the side and front panels again locating all holes.

Cut all panels to size and drill all holes as specified on the plans.

Cutting of the opening in the top can be simplified considerably by drilling a hole in each corner of the opening to start the saw cut. Sand the edge of the top panel.

Cut one batten to size noted on the bill of material. A coat of white shellac or varnish can be applied to all panels before or after assembly as desired.

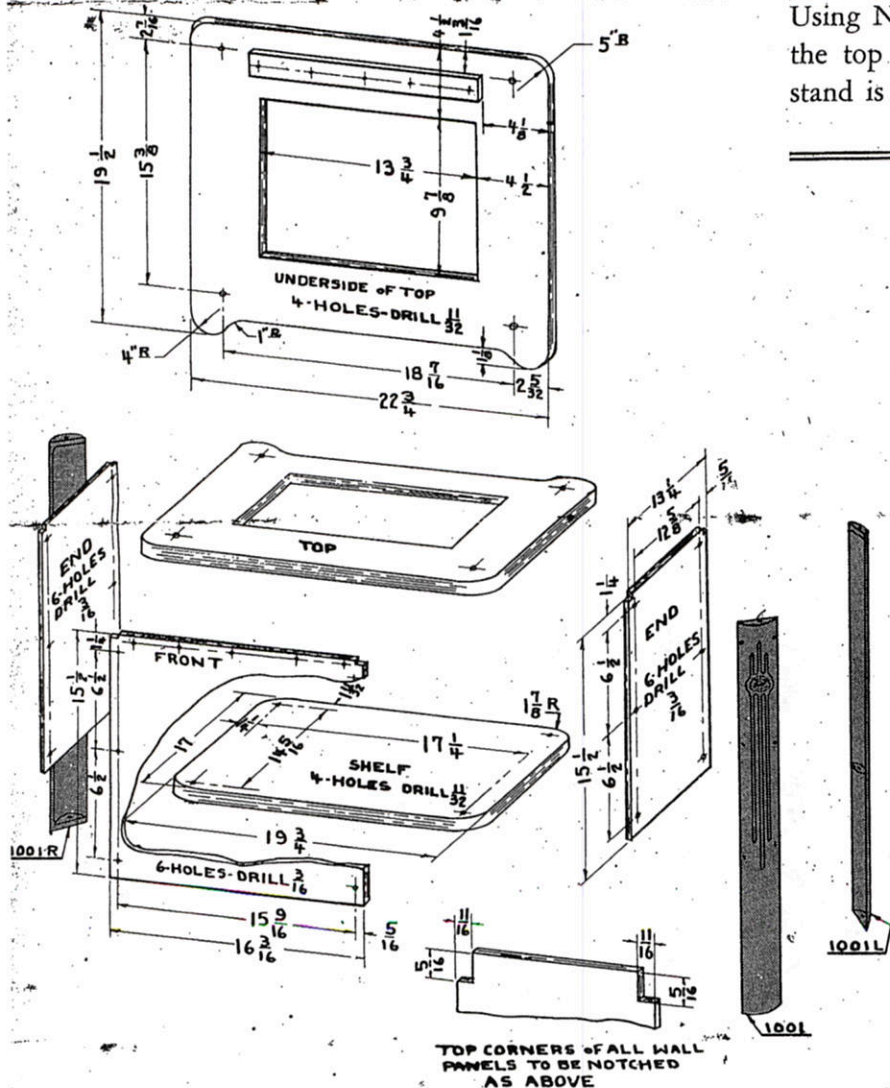
Using  $\frac{3}{16}$ " flat head machine bolts, fasten the front legs No. 1001 to the front panel. Do not neglect to use the washers supplied between the wood and the nuts.

In the same manner fasten the side panels to the front legs and the rear legs to the side panels.

Set the shelf in position and fasten securely with  $\frac{5}{16}$  x  $1\frac{1}{2}$ " carriage bolts.

Locate the batten in position on the underside of the top and fasten with four flat head wood screws No. 10 x  $1\frac{1}{2}$ " long.

Set the top on and the circular saw in position. Line up the holes through the circular saw base, top and legs fasten securely with  $\frac{5}{16}$  x 2" machine bolts. Using No. 8 round head wood screws 1" long, fasten the top of front panel to the inside batten and the stand is complete.



## BILL OF MATERIAL FOR CIRCULAR SAW STAND

No. of Pcs.	Size	Material	Used For
1	22 $\frac{3}{4}$ " x 19 $\frac{1}{2}$ "	$\frac{3}{4}$ " Plywood	Top
1	19 $\frac{3}{4}$ " x 17"	$\frac{3}{4}$ " Plywood	Shelf
2	15 $\frac{1}{2}$ " x 13 $\frac{1}{4}$ "	$\frac{1}{4}$ " Plywood	End Panels
1	15 $\frac{1}{2}$ " x 16 $\frac{3}{16}$ "	$\frac{1}{4}$ " Plywood	Front Panel
1	14 $\frac{1}{2}$ " x 1 $\frac{1}{2}$ " x $\frac{7}{8}$ "	Pine	Batten