

Model 72-12" Tilting Arbor Saw

ALL MACHINES PERFORMANCE-TESTED BEFORE SHIPMENT

Accuracy-engineered for every production or shop job

Extra Power—available with 3-HP, 1-phase or 5-HP, 3-phase motor. Four A-Section belts drive blade.

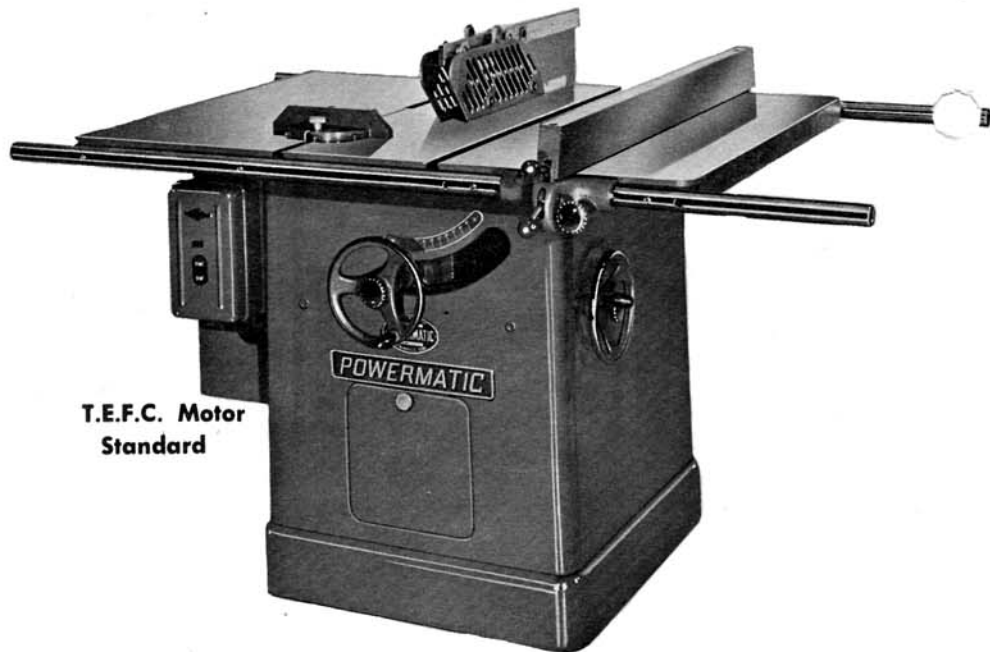
Precision Miter Cuts—gauge has stop rods to assure perfect mitering of even largest stock. Gauge glides smoothly in T-slots.

Maximum Safety—saw guard and splitter have anti-kickback pawls. Guard swings away for easy blade access.

Smooth Operation—Large 1" tilting arbor mounted in heavy-duty, sealed-for-life ball-bearings adjusts easily in extra large trunnion.

Hefty Construction—All parts finest grey iron castings. Rugged, heavy-gauge reinforced steel cabinet.

Fast-Adjusting Fence—has Vernier control setting with easy-to-read calibrations on front guide bar. Easily set and locked from either side.



T.E.F.C. Motor
Standard

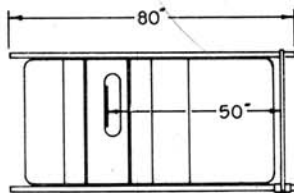
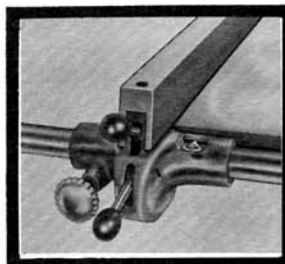
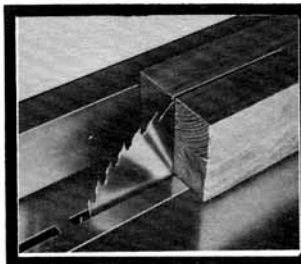


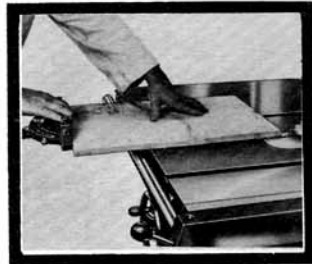
Table with 20" extension section and 80" rails for cutting 49" to right of saw blade. (OPTIONAL).



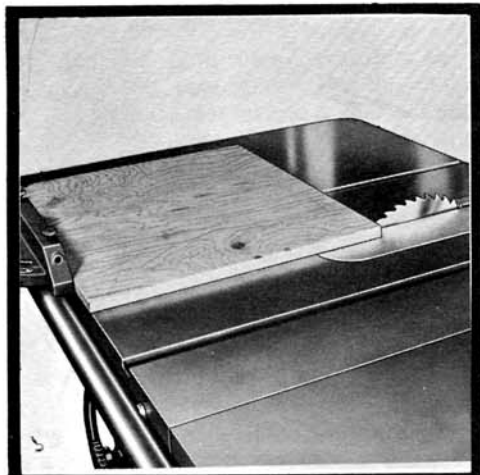
Fence Adjustment Fast and Sure from either side with Vernier control knob and top-reading front guide bar calibrations.



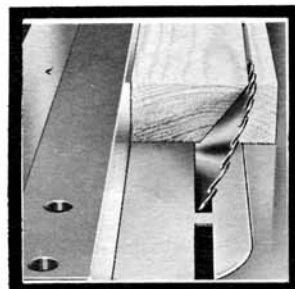
Extra Capacity 12" blade cuts stock up to 4 1/8" at 90° ranging to 2 7/8" cut at 45° position at maximum height.



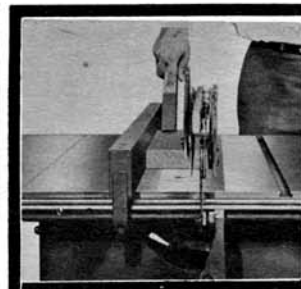
Miter Cut Accuracy—miter gauge adjust easily, extends beyond table for bigger stock.



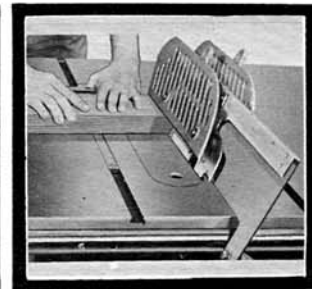
Extra Cut-Off Capacity table in front of blade is full 17" at 1" cut.



Added Safety—blade tilts away from fence to guard against dangerous binding of material against fence.



Hide-away Guard completely covers blade on all cuts, from narrow to full capacity.



Individual Action of each guard side covers blade through entire tilt range. Saw blade is never exposed to operator.

super-power, heavy-duty... speeds production

FEATURES

TABLE: Massive 38" x 48" area, with standard extension, accurately machined and reinforced with ribs to hold a true surface. Made from the finest grey iron castings.

T-SLOTS: Excellent safety feature. Prevent miter gauge from falling when making a wide cut-off. Slots on either side of saw blade.

SAW BLADE: 12" blade tilts a full 45° and features a 2 7/8" cut at this position. At 90°, the saw cuts a full 4 1/8" for extra heavy-duty work.

ARBOR: 1" arbor is mounted in large sealed ball bearings, requiring no lubrication, and is driven by four A-section belts for a maximum power. The arbor tilts, leaving table level for more accurate work. Saws tilts away from fence

for safer operation.

FENCE: Heavy cast iron fence locks on front and back. Vernier control, with easy-to-read micrometer scale for fine adjustment at any position on the table. Adjustment is made with a steel rack and pinion, which give trouble-free performance for the life of the machine.

SAW GUARD: Massive saw guard and splitter are fitted with anti-kickback pawls for maximum safety. Sides of guard swing independent of each other such that on uneven work, the saw blade is well guarded. The guard swings out of the way when not in use.

TRUNNIONS: The tilting arbor operates on extra large, wide spaced, trunnions assuring maximum rigidity.

STANDARD EQUIPMENT

12" SAW WITH MOTOR: Rip fence, miter gauge, guide rails, blade guard, splitter with anti-kickback pawls, saw blade, 4 belts, Arbor and motor pulleys, and wrenches—With motor, switch and wiring.

STANDARD MACHINES

7200-01—12" Tilting Arbor Saw, standard equipped with rip fence, miter gauge, guards, splitter with anti-kickbacks, wrenches, 3-HP, 1-phase motor and O/L Switch #1-23.

7200-02—Same as 7200-01, except with 5-HP, 3-phase motor, switch #3-30 and #1-3-32.

7200-03—Same as 7200-01, except with 7 1/2-HP, 3-phase motor, switches #3-30 and #1-3-32.

OPTIONAL ACCESSORIES

7200-11—Miter Gauge, wt. 4 lbs.

7200-12—No. 62 Combination saw, 1" bore, wt. 1 3/4 lbs.

7200-13—Regular cut-off saw, flat ground, wt. 1 3/4 lbs.

7200-14—Regular Rip saw, flat ground, wt. 1 3/4 lbs.

7200-15—No. 2—6" Dia. Dado head with groovers, wt. 6 lbs.

7200-16—No. 3—8" Dia. Dado head with groovers, wt. 6 lbs.

7200-17—Dado insert plate, wt. 1 lb.

7200-18—Magnetic 3-phase Switch #3-30 and 1-3-32, wt. 6 lbs.

7200-19—Magnetic 1-phase Switch #1-29 and 1-3-32, wt. 6 lbs.

7200-23—Cast iron extensions for ripping 49" to right of saw, wt. 340 lbs.

7200-23A—Same as 7200-23 except in lieu of standard extensions.

7200-26—1-phase O/L Switch #1-23, wt. 3/4 lb.

7200-27—3-phase O/L Switch #3-27, wt. 1 lb.

7200-28—Hollow ground planer blade, wt. 1 3/4 lbs.

7200-29—3-wire, 8' cord with twist lock attachment plug.

7200-30—4-wire, 8' cord with twist lock attachment plug.

7200-31—JIC Electricals for 1- or 3-phase, wt. 20 lbs.

7200-32—Motor belts—4L-200 (4 required).

7200-33—Motor cover.

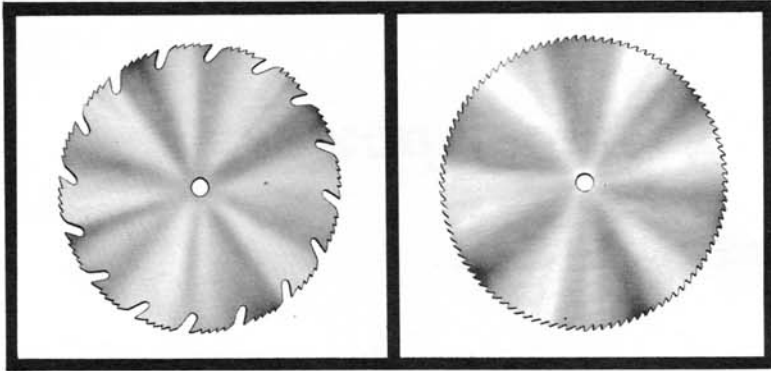
SPECIFICATIONS

Table with std. extensions 38" x 48"
Rip fence, box type,
precision ground 2" x 3 3/8" x 43"
Diameter of arbor 1"
Diameter of saw blade 12"
Blade tilt 45°
Maximum depth of cut 90°: 4 1/8",
45°: 2 7/8"
Maximum rip with std. exten-
sions, to right of saw blade 30"

Maximum rip with std. exten-
sions, to left of saw blade 24"
Maximum width cut-off in
front of saw blade in 1" stock 21"
Maximum width cut-off in
front of saw blade in 4 1/8" stock 17"
Maximum width of dado cut 1"
Motor power recommended { 3-HP, 1-Ph.
5-HP, 3-Ph.
7 1/2-HP, 3-Ph.

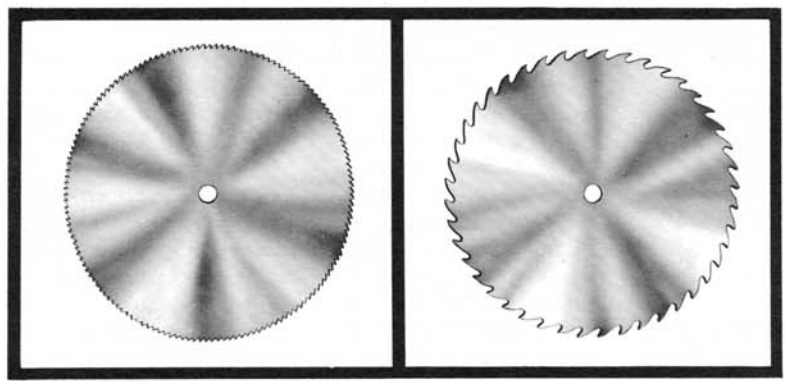
Recommended speed
of saw 3600 RPM
Table Height 35"
Cabinet Size 26" x 30"
Weight, Net with motor 792 lbs.
Weight, Domestic crated
w/motor 895 lbs.
Weight, Export boxed
w/motor (60.7 cu. ft.) 1025 lbs.
25

Tilting Arbor Saw Blades and Accessories



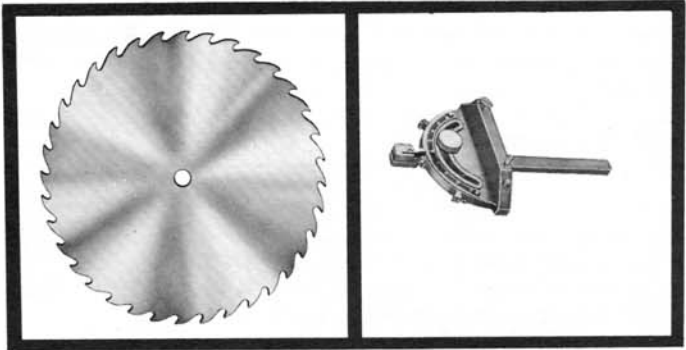
HOLLOW GROUND PLANER BLADE
#6500-14 for #65 Saw
#7200-28 for #72 Saw

100 TOOTH CUT-OFF
#6500-12 for #65 Saw
#7200-13 for #72 Saw



150 TOOTH CUT-OFF
#6500-12A for #65 Saw

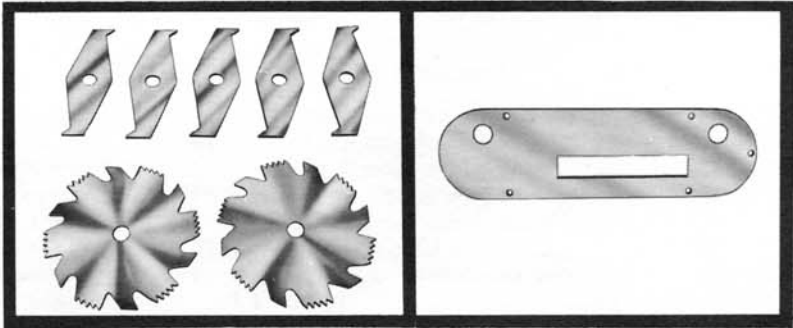
#60 COMBINATION BLADE
#6500-11 for #65 Saw
#7200-12 for #72 Saw



RIPSAW BLADE
#6500-13 for #65 Saw
#7200-14 for #72 Saw

MITER GAUGE
Precision cast aluminum miter gauge for hairline accuracy.
#6500-10 for #65 Saw
#7200-11 for #72 Saw

DADO HEAD SET
#3 Production type Dado Sets.
Will cut grooves from 1/8" to 1 1/2".
#6500-15 6" Dia.
#7200-15 6" Dia.
#7200-16 8" Dia.



DADO INSERT PLATE
For use with DADO HEADS
#6500-17 for #65 Saw
#7200-17 for #72 Saw

OPERATING INSTRUCTIONS
AND
PARTS LISTS

MODEL 72-12" TILTING ARBOR SAW

FOR SERIAL NUMBERS FROM 3-100 UP

POWERMATIC, INC.
McMinnville, Tennessee

MAY 1965

SAFETY RULES FOR SAW OPERATION

ADJUSTMENTS ON THE MACHINE

1. When setting up the machine for any sawing job, see that the saw blade revolves freely, that it is securely fastened to the arbor, and that the screws or clamps on the fences are tightened. The saw table should also be free from tools and material except the stock to be cut.
2. Use the splitter, blade guard, and a push stick or any other safety devices for all operations where they can be used.
3. Keep the saw blade sharp and properly set. It is very dangerous to work with dull and insufficiently set tools.
4. Always stop the machine before making any adjustments.
5. Keep the floor around the machine in good condition, clean and free from scraps, sawdust, oil or grease, so that there will be no danger of slipping.
6. Do not look around or carry on a conversation when operating the machine, but give it your undivided and uninterrupted attention.
7. Stock to be sawed must always be held against one of the fences. Never try to saw "freehand", that is, without holding the stock against a fence. It must have a straight, true edge, and lie flat on the table. Stock "in wind" or with rough, uneven edges should not be worked on the circular saw.
8. The saw blade must not project more than $\frac{1}{8}$ inch above any stock being sawed.
9. Stand to one side of the saw, and do not allow any other person to stand in line with the saw blade.
10. Do not reach over the saw blade. Have a helper or "tail man" to take away the stock.
11. Use the clearance block when crosscutting short pieces. Never use the ripping fence as a stop when crosscutting. It may cause a "kickback."
12. Roll up your sleeves or wear a shop coat with tight fitting and rather short sleeves. Tuck in your necktie and do not wear gloves. Loose-fitting, torn, or ragged clothing is dangerous, because it may be caught by the saw and the operator's hand or arm pulled against the saw blade and seriously injured.

GENERAL SET-UP AND ALIGNMENT

1. RECEIVING

Uncrate and check for shipping damage. Clean all coated and greased surfaces. Read instructions thoroughly. Locate all lubrication points; adjustments; methods of drive.

2. MOUNTING

Mount machine securely to solid foundation. Locate in clean, dry and well ventilated building if possible. Motor and electrical connections should be protected when not in operation or if exposed to weather elements.

3. INSPECTION

The above machine requires the minimum amount of attention in service. Periodic or regular inspections are recommended to insure machine is in proper adjustment. Check for positive electrical connections. Be sure bearings are not overheating or loose.

4. BEFORE OPERATION

Check motor name plate data or wiring diagram of motor and switch for proper voltage connection before wiring into line. Run motor without load to check the connections and direction of rotation. Always refer to motor name plate for rotation connections.

OPERATING ADJUSTMENTS

MOTOR & DRIVE:

Saw is powered by a C flange motor, bolted to the motor mount base with four cap screws (No. 1, fig. 1). The motor mount base is mounted on to saw arm flange and pivots on the saw arm shaft. Saw arbor is driven by four-belt (steel core) drive. Belts are adjusted by loosening the two cap screws (No. 2, fig. 1) on either side of motor mount and turning the motor (No. 3, fig. 1) to the right to loosen or to the left to tighten. If belts are operated without proper tension, excessive heating and wear will result, shortening belt life.

SAW ARBOR:

Saw is equipped with a 1" arbor, operating in sealed ball bearings, requiring no lubrication. To remove saw arbor, remove nut (No. 4, Fig. 1) and V belt sheave (No. 5, fig. 1). Remove set screw (No. 6, fig. 1). Bump end of arbor with a wooden block and it will slide out.

RAISING MECHANISM:

Saw arm is raised with a worm gear, operated by the handwheel mounted on front of saw. Saw blade may be locked at any desired height by tightening knurled handwheel in center of front handwheel.

TILTING MECHANISM:

Saw blade is tilted by means of a worm gear, operated by handwheel on right side of saw base. Blade may be locked at any desired angle by tightening knurled handwheel in center of tilting handwheel. The tilting mechanism has stops at 45 and 90 degree positions, and may be adjusted to "0" setting with adjusting screws (No. 7 and 8, fig. 1).

TABLE ALIGNMENT:

If saw blade fails to align with miter slots, loosen the four cap screws that hold table on saw frame and shift table until miter slots are parallel with saw blade. Tighten cap screws.

REPLACING SAW BLADES:

Remove insert plate and raise saw blade to highest position. Remove arbor nut and outer saw collar. If arbor nut is exceptionally tight, hold saw by wedging a short board into teeth of blade. This will keep arbor from turning. When replacing saw blade, arbor and flange should be free from dust or shavings. Make SURE saw teeth point toward front of saw.

ALIGNING SPLITTER BAR:

If splitter bar does not line up with saw blade, realignment is simple through adjusting screws (No. 9, fig. 2).

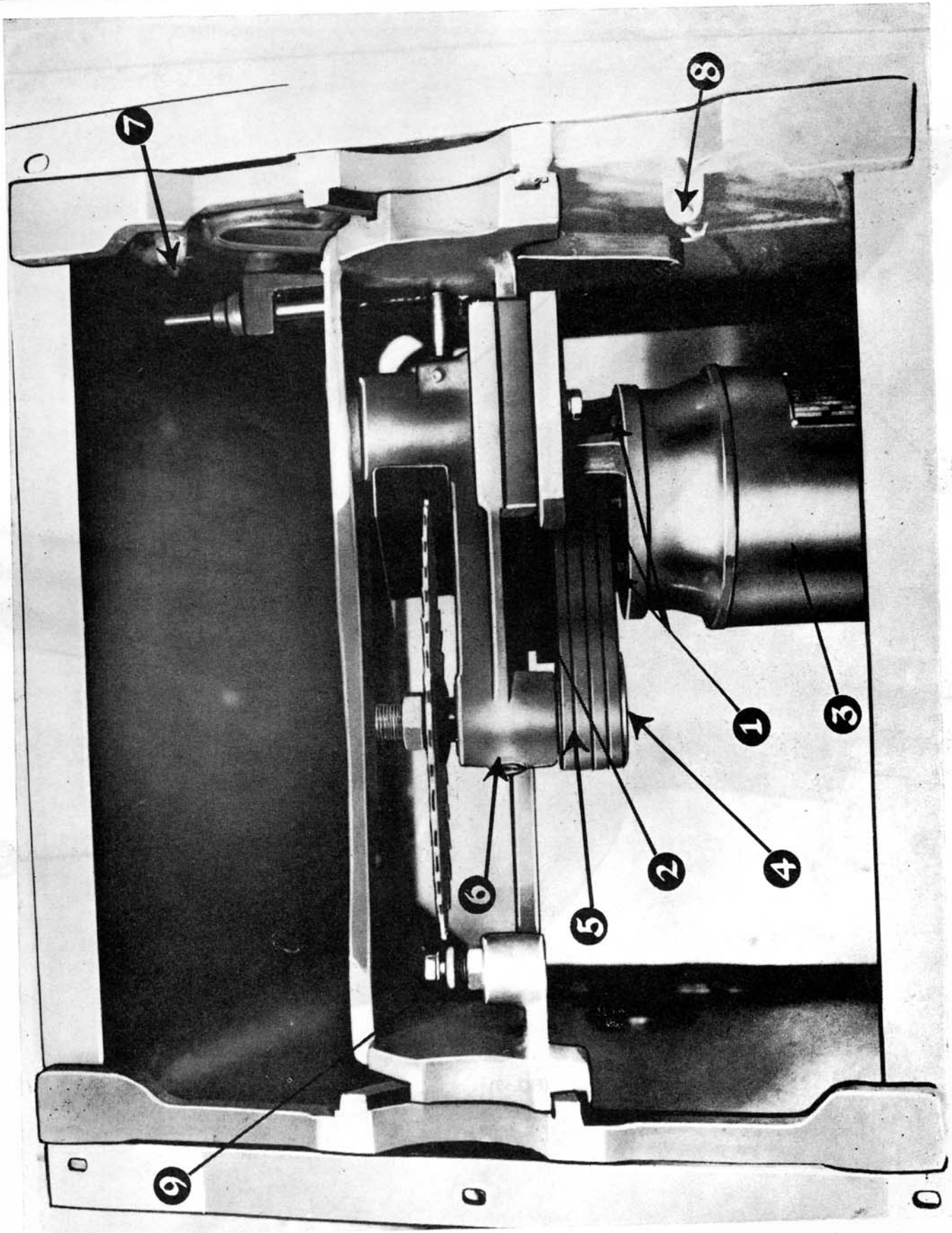
RIP FENCE ADJUSTMENT:

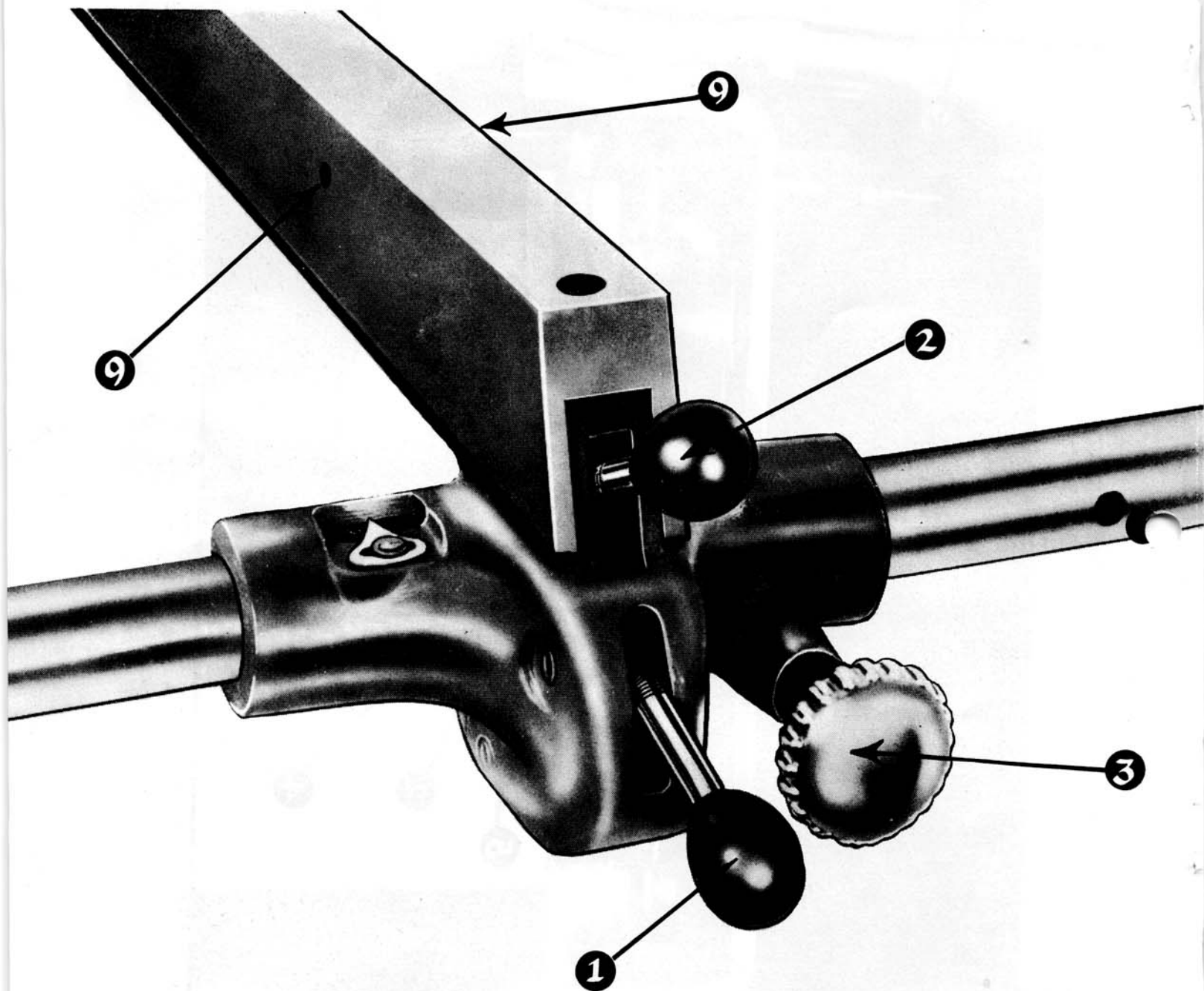
The rip fence is supported by two round bars mounted on the front and rear of saw table. Fence may be locked in any position on tables with handles (No. 1 and 2, fig. 2). Handle No. 1, in the extreme down position, locks front of fence, properly aligning rear of fence, which may then be locked with handle 2. When handle No. 1 is raised to the center position, fence is free for sliding to any position on table. For vernier adjustment push in handle (No. 3, fig. 2) and turn.

To check fence alignment, move fence to the edge of the miter gauge slot. If fence does not line up with miter slot after it has been locked in place with handle No. 1, insert allen wrenches in holes (No. 9, fig. 2). By loosening the screw in one side and tightening screw in other side, fence can be aligned with miter gauge slot. Allen screws must be turned outward to lock against inside of the fence casting.

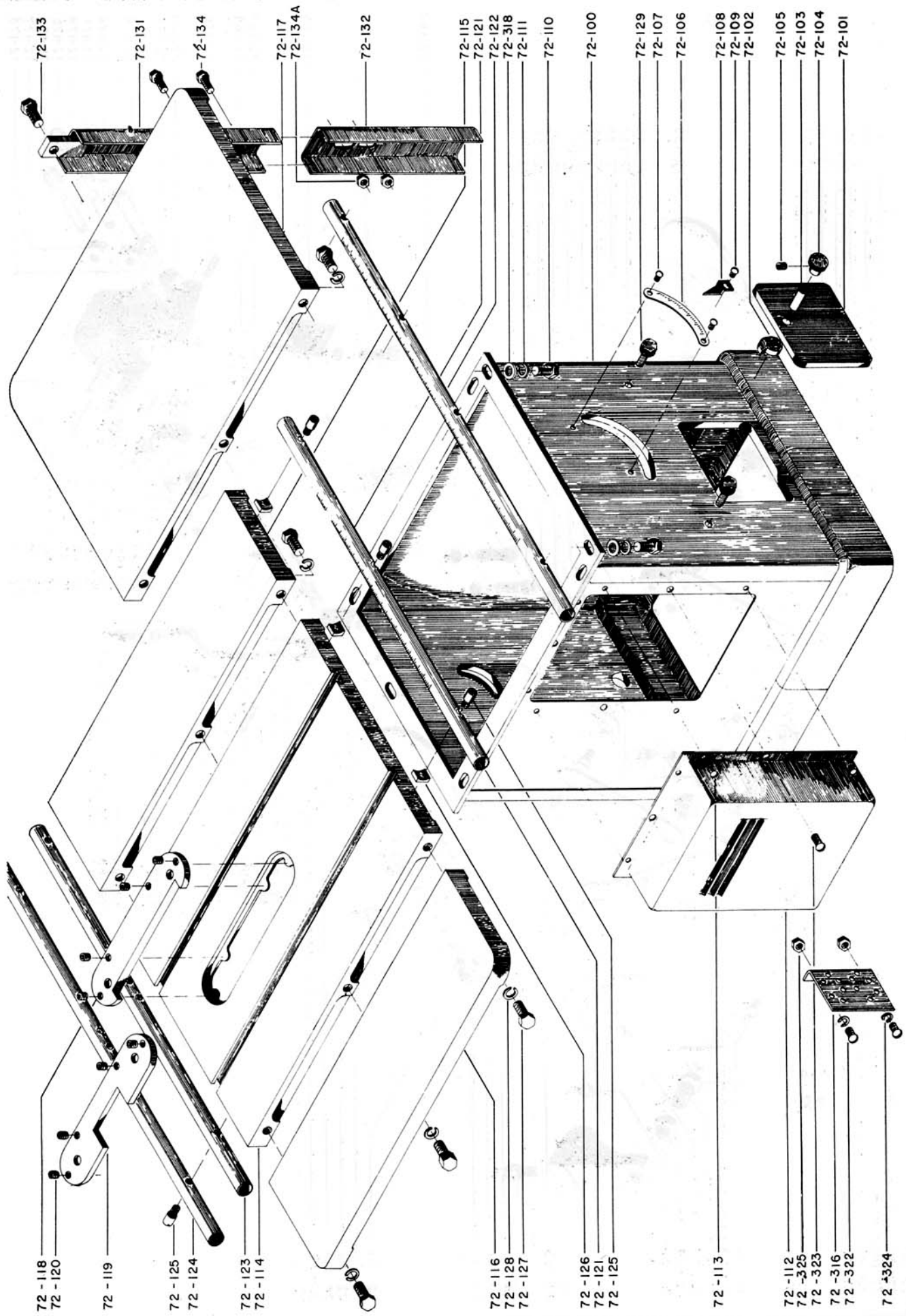
Front fence lock can be adjusted with screw (Part #72-185).

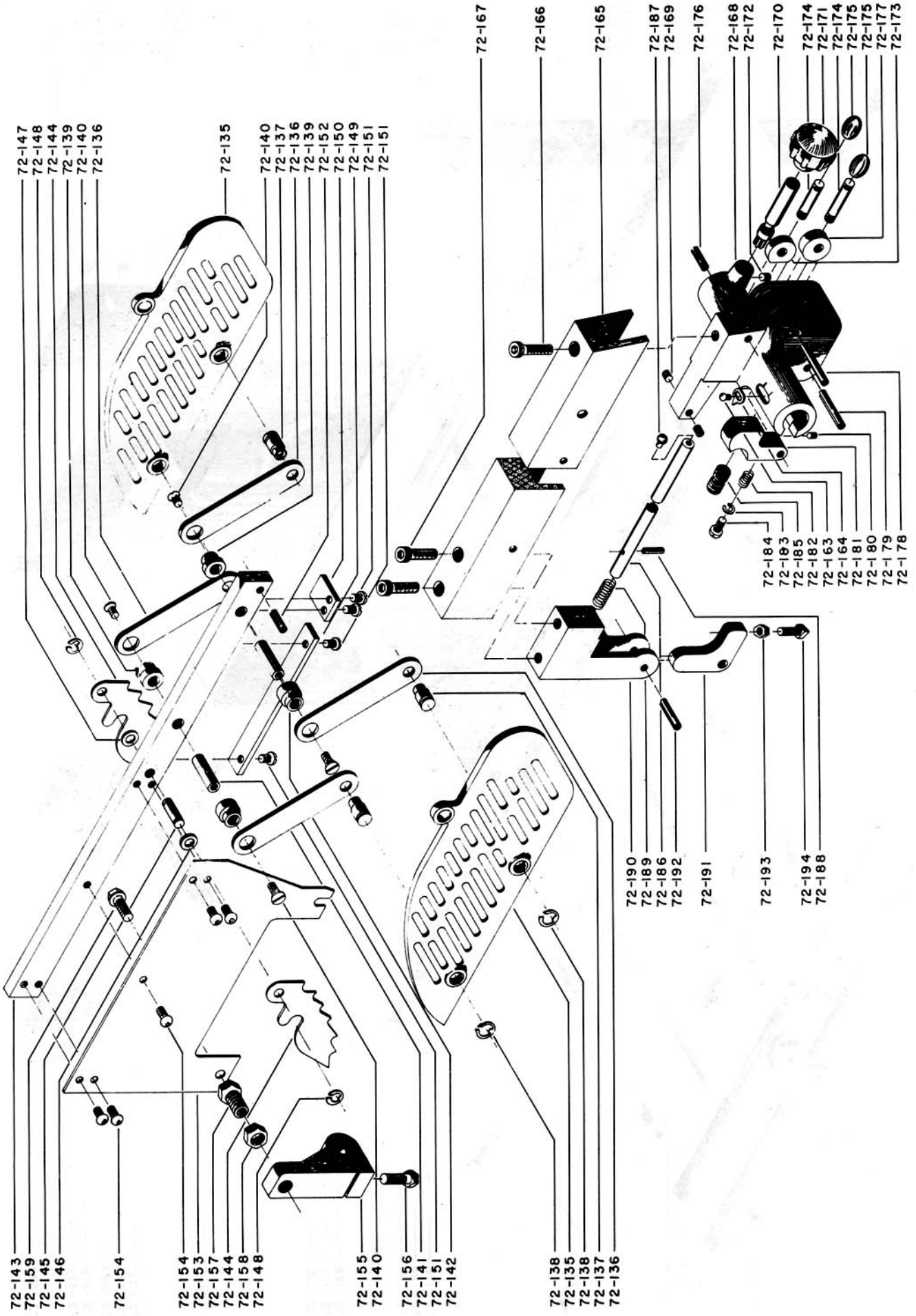
Rear fence lock can be adjusted with screw (Part #72-194) located directly under the rear table bar.

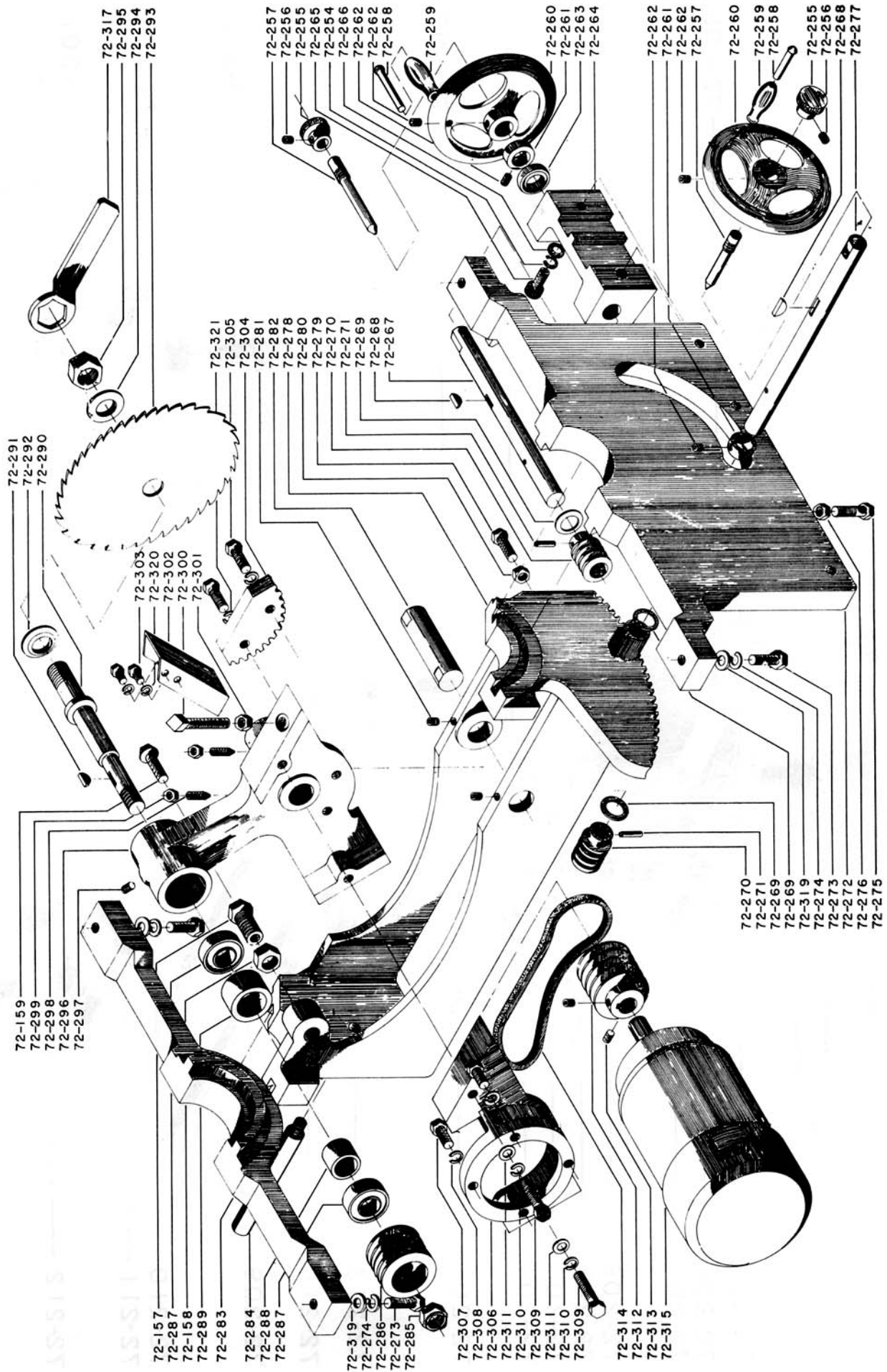


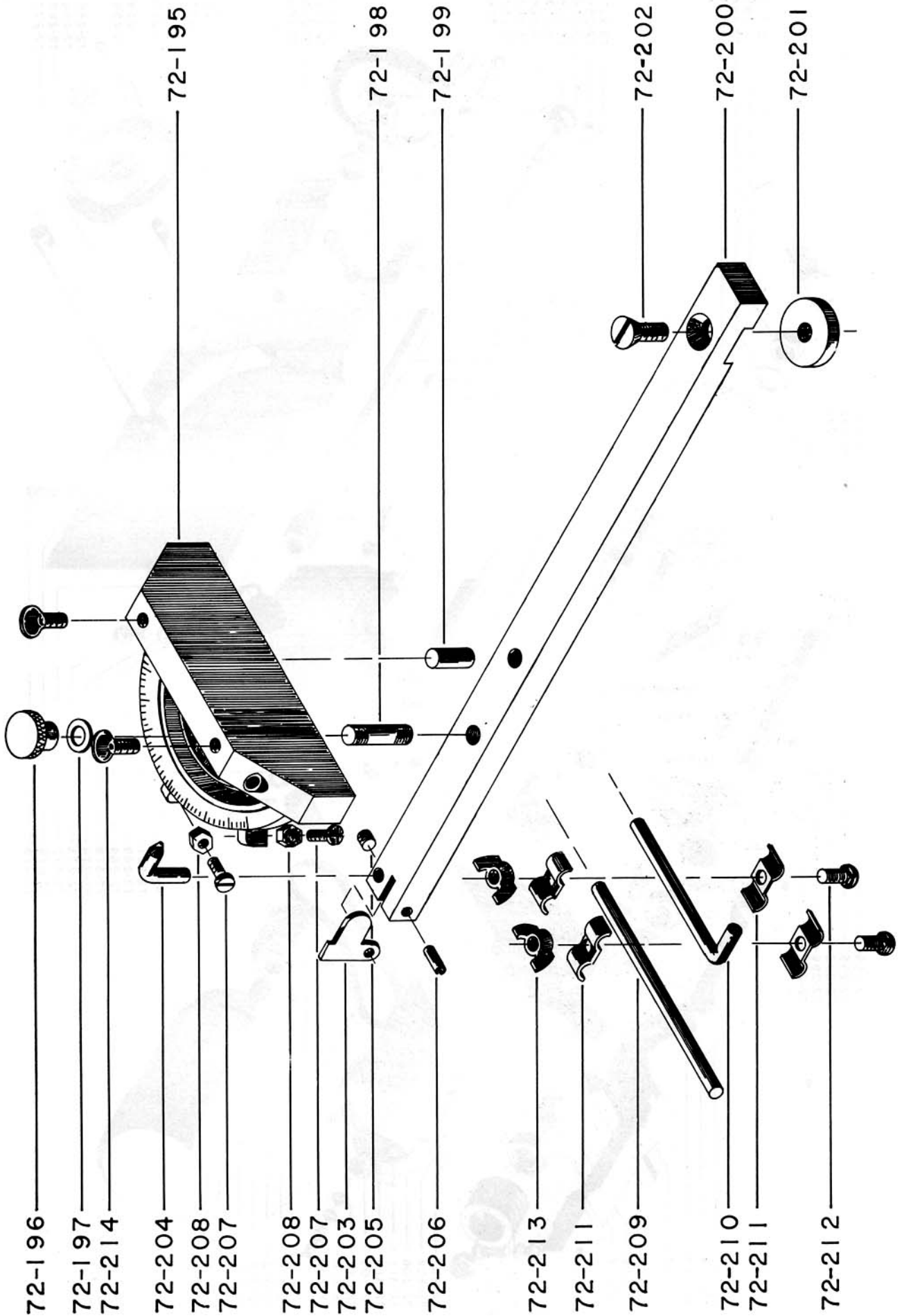


(FIG. 2)









72 TA SAW PARTS LIST

PART NR.	NOMENCLATURE
72-100	Stand Assembly
72-100A	Base Section
72-100B	Frame
72-100C	Front (Cowling)
72-100D	Rear (Cowling)
72-100E	Side, L.H. (Cowling)
72-100F	Side, R.H. (Cowling)
72-101	Door, Clean Out
72-101A	Spacer (welded to door) 700-65A
72-102	Latch, Clean Out Door B-12
72-103	Shaft, Clean Out Door Latch
72-104	Knob, Clean Out Door 10-1
72-105	Setscrew ¼-20 x ¼
72-106	Scale, Saw Tilting
72-107	Screw, Scale Mounting #6 x ¼ Sheet Metal
72-108	Pointer, Saw Tilting
72-109	Screw, Saw Tilting Pointer 8-32 x ¼ Round Hd
72-110	Bolt, Table Mounting ½-13 x 1¼ Hex Hd
72-111	Washer, Lock ½
72-112	Cover, Motor
72-113	Screw, Motor Cover (Sheet Metal Screws)
72-114	Table, Saw TA 72-1
72-115	Extension 11" Square—Optional TA 72-9
72-116	Extension 11" Round TA 72-8
72-117	Extension 25" Round—Optional TA 72-7
72-118	Insert, Saw Table
72-119	Dado, Table Insert—Optional
72-120	Setscrew, Insert ¼-20 x ⅝ Nyloc
72-121	Fence Rail, Front 64"
72-122	Fence Rail, Front 80"—Optional
72-123	Fence Rail, Rear 64"
72-124	Fence Rail, Rear 80"—Optional
72-125	Screw, Rail Mounting 65-180
72-126	Spacer, Rail Mounting Nylon 65-179
72-127	Bolt, Extension ½-13 x 1¼ Hex Head
72-128	Washer, Lock ½
72-129	Bolt, Front Trunion Rail ⅝-16 x ⅝ Washer Hd Hex
72-131	Extension Support Leg, Inner Assy (131A & 131B)
72-131A	Inner Leg
72-131B	Mounting Bracket, Inner Leg
72-132	Extension Support Leg, Outer
72-133	Bolt, Extension Leg Mounting ⅝-16 x 1" Hex Head
72-134	Bolt, Extension Leg Adjusting 5/16-8 x ⅝ Hex Head
72-134A	Nut, Bolt 5/16-18 Hex
72-135	Guard, Saw Blade TA 72-12
72-136	Swing Arm, Saw Guard
72-137	Hinge Pin, Swing Arm
72-138	Lock Ring, Hinge Pin Tru-Arc 5/33-50
72-139	Spool, Saw Guard ⅝"
72-140	Screw, Swing Arm Spool ¼-20 x ½ Screwdriver Flat Hd
72-141	Pin, Swing Arm
72-142	Spool, Saw Guard ⅝"
72-143	Splitter Bar
72-144	Pawl, Kickback
72-145	Pin, Kickback Pawl
72-146	Spacer, Saw Guard 3/16" Thick

PART NR.	NOMENCLATURE
72-147	Spacer, Saw Guard 1/16" Thick
72-148	Lockring, Kickback Pawl Pin Tru-Arc 5133-37
72-149	Lower Pad, Splitter Bar
72-150	Stop Pad, Splitter Bar
72-151	Screw, Pad Mounting ¼-20 x ½ Round Head
72-152	Splitpin, Splitter Bar 5/16 x 1¼
72-153	Splitter
72-154	Screw, Splitter Mounting ¼-20 x ½ Round Head Socket
72-155	Casting, Rear Splitter Support TA 72-11
72-156	Bolt, Rear Splitter Support Casting 5/16-18 x 1½ Hex Hd
72-157	Bolt, Splitter Mounting ¾-16 x 1¼ Hex Hd
72-158	Nut, Splitter Mounting Bolt ¾-16 Hex
72-159	Bolt, Splitter ¾-16 x ¾ Washer Head Hex
72-163	Screw, Pointer Mounting 6-32 x ¼ Round Head
72-164	Pointer, Fence Carriage
72-165	Fence TA 72-13
72-166	Bolt, Fence Carriage Mounting
72-167	Bolt, Rear Fence Mounting Bracket
72-168	Fence Carriage TA 74
72-169	Setscrew, Fence Carriage ⅝-16 x 7/16
72-170	Pinion, Fence Carriage
72-171	Handle, Fence Carriage Pinion
72-172	Setscrew, Fence Carriage Pinion ¼-20 x ⅝ Nyloc
72-173	Cam, Rear Locking
72-174	Handle, Cam
72-175	Knob, Cam Handle, 187 x ⅝
72-176	Split Pin, Rear Lock Cam ¼ x 1"
72-177	Cam, Fence Locking
72-178	Split Pin, Fence Lock Cam ⅝ x 1¼
72-179	Split Pin, Fence Lock Bracket ⅝ x 1¼
72-180	Setscrew, Fence Lock Bracket ¼-20 x ⅝
72-181	Fence Lock Bracket TA 75
72-182	Spring, Fence Lock Bracket 65-2
72-183	Washer, Lock ¼
72-184	Screw, Fence Lock Bracket ¼-20 x ⅝ Round Head
72-185	Adjusting Screw, Fence Lock Bracket
72-186	Rod, Fence Rear Lock
72-187	Pin, Rear Lock Fence Rod 3/16 Rd Hd
72-188	Splitpin, Spring Stop ½ x ⅝
72-189	Spring, Fence Rod AS 16143
72-190	Bracket, Rear Fence Mounting TA 52
72-191	Lock, Rear Fence TA 53 (Int w/65)
72-192	Splitpin, Rear Fence Lock ¼ x 1"
72-193	Nut, Rear Fence Lock Adjusting Bolt ¼ Hex
72-194	Bolt, Rear Fence Lock Adjusting ¼-20 x 1" Sq. Hd.
72-195	Casting, Miter Gauge
72-196	Knob, Miter Gauge Lock 10-1
72-197	Washer, Miter Gauge Stud ¼ Flat
72-198	Stud, Miter Gauge Lock ¼ x 1½
72-199	Pin, Pivot, Miter Gauge ¼ x 1" (Hardened Dowel)
72-200	Bar, Miter Gauge
72-201	Washer, Miter Gauge Bar
72-202	Screw, ¼-20 x ⅝ Flat Head
72-203	Stop, Miter Gauge
72-204	Pointer, Miter Gauge
72-205	Setscrew, Pointer 6-32 x ¼
72-206	Splitpin, Stop Mounting ⅝ x ⅝
72-207	Screw, Miter Gauge Stop 6-32 x ⅝ Round Head

PART NR.	NOMENCLATURE
72-208	Nut 6-32 Hex
72-209	Stop Rod, Straight
72-210	Stop Rod, Bent
72-211	Clamp, Stop Rod
72-212	Screw, Stop Rod 10-24 x $\frac{3}{4}$ Carriage Bolt
72-213	Wingnut 10-24
72-214	Thumbscrew, Miter Gauge Stop Rod $\frac{1}{4}$ -20 x $\frac{1}{2}$
72-254	Lockwasher $\frac{3}{8}$
72-255	Knob, Saw Raising & Tilting Lock 10-1
72-256	Setscrew, Knob $\frac{1}{4}$ -20 x $\frac{1}{4}$
72-257	Pin, Saw Raising & Tilting Lock
72-258	Pin, Handwheel Handle $\frac{1}{4}$ x 3 Rivet
72-259	Handle, Handwheel (Nylon Machine Handle)
72-260	Handwheel, Saw Raising & Tilting TA-11
72-261	Collar, Saw Raising & Tilting Shaft 65-119
72-262	Setscrew 5/16-18 x 5/16
72-263	Pressure Bearing, Saw Tilting Shaft NICE 607
72-264	Bracket, Front Trunion Rail TA 66
72-265	Bolt, Trunion Rail Bracket $\frac{3}{8}$ -16 x 1 $\frac{1}{2}$ Socket Cap
72-266	Washer, Flat $\frac{3}{8}$
72-267	Shaft, Saw Tilting
72-268	Woodruff Key #607
72-269	Washer, Nylon E-12
72-270	Worm, Saw Raising & Tilting
72-271	Splitpin, Worm Mounting 3/16 x 1"
72-272	Rail, Front Trunion TA 72-2
72-273	Bolt, Trunion Rail Mounting $\frac{1}{2}$ -13 x 1 $\frac{1}{4}$ Hex Hd
72-274	Washer, Lock $\frac{1}{2}$
72-275	Bolt, Tilting Stop $\frac{3}{8}$ -16 x 1 $\frac{1}{4}$ Hex Hd
72-276	Nut, Tilting Stop Bolt $\frac{3}{8}$ -16 Hex
72-277	Shaft, Saw Raising
72-278	Trunion Box TA 72-6
72-279	Screw, Tilting Adj. $\frac{3}{8}$ -16 x 1" Hex Hd
72-280	Nut $\frac{3}{8}$ -16 Hex
72-281	Setscrew, Bearing Arm Pin $\frac{3}{8}$ -16 x $\frac{3}{8}$ Nyloc
72-282	Pin, Bearing Arm
72-283	Rail, Rear Trunion TA 72-3
72-284	Shaft, Splitter Support Casting
72-285	Nut, Arbor Pulley $\frac{7}{8}$ -14 NF Hex Locknut
72-286	Pulley, Arbor TA 56
72-287	Bearing, Arbor W205PP
72-288	Bearing Spacer, Inner 72-288
72-289	Bearing Spacer, Outer 72-289
72-290	Saw Arbor
72-291	Woodruff Key, Arbor #608
72-292	Saw Collar, Inner (Int w/71)
72-293	Saw Blade
72-294	Saw Collar, Outer (Int w/71)
72-295	Nut, Saw Blade 1"-14 Hex
72-296	Bearing Arm TA 72-5
72-297	Setscrew, Bearing Spacer $\frac{3}{8}$ -16 x 7/16
72-298	Setscrew, Gear Segment Adj. $\frac{3}{8}$ -16 x 1 $\frac{1}{4}$
72-299	Nut, Setscrew $\frac{3}{8}$ -16 Hex
72-300	Bolt, Raising Stop $\frac{3}{8}$ -16 x 2 $\frac{1}{2}$ Sq. Hd.
72-301	Nut $\frac{3}{8}$ -16 Hex
72-302	Dust Chute
72-303	Screw, Dust Chute Mounting $\frac{1}{4}$ -20 x $\frac{1}{2}$ Hex Hd
72-304	Gear Segment TA 62

PART NR.	NOMENCLATURE
72-305	Bolt, Gear Segment Mounting $\frac{3}{8}$ -16 x 1 $\frac{1}{2}$ Hex Hd
72-306	Casting, Motor Mount TA 72-10
72-307	Bolt, Motor $\frac{3}{8}$ -16 x 1" Hex Hd
72-308	Washer, Lock $\frac{3}{8}$
72-309	Bolt, Motor Mount Casting $\frac{1}{2}$ -13 x 1 $\frac{1}{2}$ Hex Hd (Hi-Carb)
72-310	Washer, Lock $\frac{1}{2}$
72-311	Washer, Flat $\frac{1}{2}$
72-312	Pulley, Motor TA 56
72-313	Setscrew, Motor Pulley 5/16-18 x 5/16
72-314	Belt, Pulley 3V250 Matched (4 Required)
72-315	Motor 3 $\frac{1}{2}$ or 5 HP
72-316	Bracket, Switch Mounting
72-317	Wrench, Saw Arbor
72-318	Flat Washer, Table Bolt $\frac{1}{2}$, $\frac{1}{8}$ Thick
72-319	Washer, Flat, Trunion, $\frac{1}{2}$, $\frac{1}{8}$ Thick
72-320	Lockwasher $\frac{1}{4}$
72-321	Lockwasher $\frac{3}{8}$
72-322	Screw, Switch Mounting Bracket $\frac{1}{4}$ -20 x $\frac{3}{4}$ Round Hd
72-323	Screw, Motor Cover $\frac{1}{4}$ x $\frac{1}{2}$ Sheet Metal
72-324	Lockwasher $\frac{1}{4}$
72-325	Nut, $\frac{1}{4}$ -20 Hex

PART PRICE LIST FOR 7200-12" TILTING ARBOR SAW

(EFFECTIVE MARCH, 1965)

<u>PART NO.</u>	<u>DESCRIPTION</u>	<u>PRICE</u>
72-100	Stand Assembly	145.00
72-100-A	Base Section	
72-101	Door, Clean Out	2.50
72-102	Latch, Clean out Door B-12	.50
72-103	Shaft, Clean out Door Latch	.30
72-104	Knob, Clean Out Door	.60
72-105	Set, Screw $\frac{1}{4}$ -20 x $\frac{1}{4}$.25
72-106	Scale, Saw Tilting	.75
72-107	Screw, Scale Mounting	.20
72-108	Pointer, Saw Tilting	.40
72-109	Screw, Saw Tilt	.20
72-110	Bolt, Table Mounting $\frac{1}{2}$ -13-1"	.30
72-111	Washer, Lock $\frac{1}{2}$ "	.20
72-113	Screw, Motor Cover $\frac{1}{4}$ -20 x $\frac{1}{2}$.15 Each
72-114	Table Saw	140.00
72-115	Extension 11" Square	30.00
72-116	Extension 11" Round	30.00
72-117	Extension 25" Round	80.00
72-118	Insert, Saw Table	8.50
72-119	Dado, Table Insert	8.50
72-120	Screw, Insert	.15 Each
72-121	Fence Rail Front, 64"	16.00
72-122	Fence, Rail Front, 80"	18.00
72-123	Fence, Rail Rear 64"	12.00
72-124	Fence, Rail Rear 80"	14.00
72-125	Screw, Rail Mounting	.60 Each
72-126	Spacer, Rail Mounting	.30 Each
72-127	Bolt, Extension Mounting $\frac{1}{2}$ x $1\frac{1}{4}$ "	.40 Each
72-128	Washer, Lock $\frac{1}{2}$ "	.15 Each
72-129	Bolt, Front Trunion Rail $3/8$ x $3/4$.30 Each
72-131	Extension, Support Leg	2.25
72-132	Extension, Leg Mounting Bracket	.65
72-133	Bolt, Extension Leg Mounting $3/8$ x 1 "	.25
72-134	Bolt, Leg Adjusting	.25
72-135	Guard, Saw Blade	7.50
72-136	Swing Arm, Saw Guard	1.25 Each
72-137	Hinge, Pin Swing Arm	.35 Each
72-138	Lock Ring Hinge Pin	.25
72-139	Spool, Saw Guard	.40 Each
72-140	Screw, Swing Arm Spool	.20
72-141	Pin, Swing Arm	.30 Each
72-142	Spool, Saw Guard	.35 Each
72-143	Splitter Bar	5.50
72-144	Pawl, anti-kickback	.75 Each

(EFFECTIVE MARCH, 1965)

<u>PART NO.</u>	<u>DESCRIPTION</u>	<u>PRICE</u>
72-145	Pin, anti-kickback pawl	.30
72-146	Spacer, Saw guard 3/16"	.30
72-147	Spacer, Saw Guard 1/16"	.25
72-148	Lockring, Pawl pin	.20
72-149	Splitter bar, Lower Pad	.60
72-150	Stop, Splitter Bar Pad	.60
72-151	Screw, Pad mounting	.25
72-152	Pin, Splitter Bar	.20
72-153	Splitter	2.50
72-154	Splitter support, rear	1.75
72-155	Splitter support, rear	1.75
72-156	Bolt, rear splitter support	.30
72-157	Bolt, splitter mounting	.60
72-158	Nut, splitter mounting nut	.20
72-159	Washer, splitter bolt	.20
72-163	Screw, pointer mounting	.15
72-164	Pointer, Fence Carriage	.25
72-165	Fence	40.00
72-166	Bolt, fence mounting	.30
72-167	Bolt, fence mounting rear	.25
72-168	Fence carriage	12.50
72-169	Screw, Fence adjusting	.25
72-170	Pinion, fence carriage	2.00
72-171	Handle, fence carriage	.75
72-172	Set Screw, fence carriage pin	.25
72-173	Cam, rear locking	.90
72-174	Handle, Cam	.75
72-175	Knob, cam handle	.85
72-176	Pin, rear lock	.20
72-177	Cam, fence locking	2.25
72-178	Pin, fence lock cam	.20
72-179	Pin, fence lock rear	.20
72-180	Set screw, fence	.25
72-181	Fence, locking bracket	1.75
72-182	Spring, fence locking	.90
72-183	Washer, lock	.15
72-184	Screw, fence lock bracket	.20
72-185	Screw, fence adjusting	.40
72-186	Rod, fence rear lock	1.25
72-187	Pin, rear lock fence rod	.20
72-188	Pin, Spring Stop	.20
72-189	Spring, fence rod	.75
72-190	Bracket, rear fence mounting	1.50
72-191	Lock, rear fence	.85

Each

(EFFECTIVE MARCH, 1965)

<u>PART NO.</u>	<u>DESCRIPTION</u>	<u>PRICE</u>
72-192	Pin, rear fence lock	.20
72-193	Nut, adjusting bolt rear fence	.20
72-194	Bolt, adjusting bolt rear fence	.25
72-195	Casting, Miter Gauge	3.00
72-196	Knob, Miter gauge lock	.60
72-197	Washer, miter gauge lock	.15
72-198	Stud, miter gauge lock	.25
72-199	Pin, gauge mount	.25
72-200	Bar, miter gauge	1.40
72-201	Washer, miter gauge bar	.35
72-202	Screw, flat head	.20
72-203	Stop, miter gauge	.25
72-204	Pointer, miter gauge	.20
72-205	Setscrew, Pointer	.20
72-206	Pin, stop mounting	.20
72-207	Screw, miter gauge stop	.20
72-208	Nut	.15
72-209	Rod, stop straight	.60
72-210	Rod, stop bent	.60
72-211	Clamp, stop rod	.40
72-212	Screw, stop rod	.15
72-213	Wing Nut, stop rod	.15
72-214	Thumbscrew, miter gauge stop rod	.15
72-254	Lockwasher	.10
72-255	Knob, saw raising and tilting	1.00
72-256	Setscrew, knob	.15
72-257	Pin, saw raising tilting	.15
72-258	Pin, hand wheel handle	.20
72-259	Handle, handwheel	.60
72-260	Handwheel, raising tilting	2.40
72-261	Collar, raising, tilting shaft	1.00
72-262	Setscrew	.20
72-263	Thrust bearing, tilting shaft	1.50
72-264	Mounting bracket, tilting screw	3.50
72-265	Bolt, trunion rail	.30
72-266	Washer, trunion rail	.20
72-267	Shaft, saw tilting	2.00
72-268	Key, woodruff	.25
72-269	Washer, tilting shaft	.20
72-270	Worm, tilting raising	3.50
72-271	Pin, worm gear	.20
72-272	Rail, front trunion	15.00
72-273	Bolt, trunion mounting	.40
72-274	Washer, lock	.20

Each

(EFFECTIVE MARCH, 1965)

<u>PART NO.</u>	<u>DESCRIPTION</u>	<u>PRICE</u>
72-275	Bolt, tilting stop	.30
72-276	Nut, tilting stop	.20
72-277	Shaft, saw raising	2.50
72-278	Trunion, box	25.00
72-279	Screw, tilting stop	.30
72-280	Stop, lock nut	.25
72-281	Setscrew, bearing arm pin	.20
72-282	Shaft, bearing arm	2.00
72-283	Rail, rear trunion	10.00
72-284	Shaft, splitter support	1.50
72-285	Nut, arbor pulley	.75
72-286	Pulley, arbor	6.00
72-287	Bearing, arbor	3.25
72-288	Spacer, bearing inter	.75
72-289	Spacer, bearing outer	1.00
72-290	Saw, arbor	2.00
72-291	Key, arbor, pulley	.25
72-293	Saw blade	
72-294	Saw collar, outer	1.50
72-295	Nut, saw arbor	1.50
72-296	Bearing arm	12.50
72-297	Setscrew, bearing spacer	.25
72-298	Setscrew	.30
72-299	Nut, setscrew	.20
72-301	Nut	.20
72-302	Dust chute	1.25
72-303	Screw, chute mounting	.20
72-304	Gear, segment	6.50
72-305	Bolt, gear mounting	.25
72-306	Base, motor mounting	10.00
72-307	Bolt, motor mounting	.30
72-308	Washer, mounting bolt	.20
72-309	Bolt, mounting	.30
72-310	Washer, lock	.20
72-311	Washer, flat	.15
72-312	Pulley, motor	5.50
72-313	Setscrew, motor pulley	.20
72-314	Belt, drive (4 required)	1.75 Each
72-316	Bracket, switch	1.60
72-317	Wrench, saw arbor	2.00
72-319	Washer, table bolt	.20
72-320	Washer, lock	.15

MINIMUM CHARGE OF \$1.50 ON ALL PARTS ORDERS.