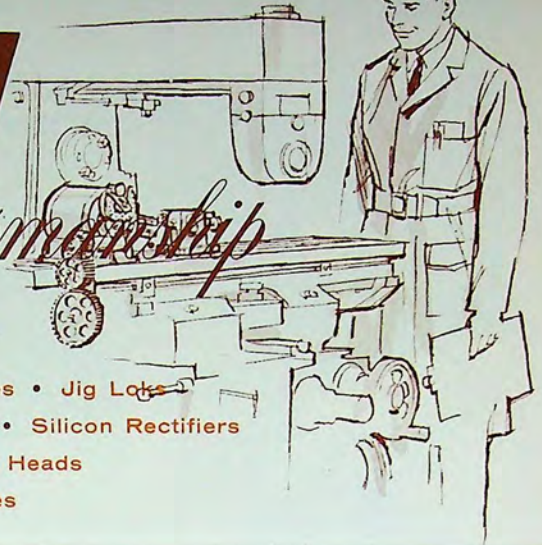


LW

Fine Quality Craftsmanship

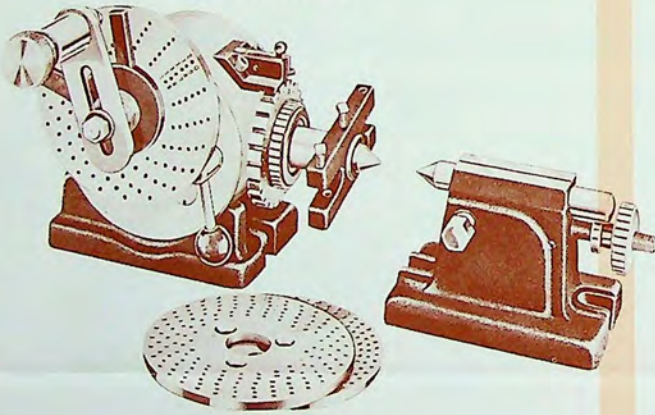
AT LOW COST

Drill Press Vises • Milling Machine Vises • Jig Loxes
 Universal Dividing Heads • Magnetic Chucks • Silicon Rectifiers
 Direct Indexing Universal Dividing Heads
 Demagnetizers • Accessories

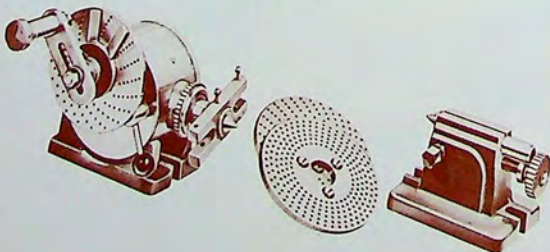


L-W DIVIDING HEAD SPECIFICATIONS • LW

Model SDD 6-1/2" Left Hand



Model SD — 6 1/2" Left Hand



OVERALL DIMENSIONS

Length of Head Stock Base	6"
Width of Head Stock Base	4 1/4"
Length of Tail Stock Base	5 1/2"
Width of Tail Stock Base	3 3/8"
Height of Centers	3/4 + .005"
Maximum Diameter Self Centering Chuck	6"
Spindle Nose Threaded	1 1/2" x 8"
Hole Through Spindle	7/8"
Bottom Keys	9/16"

OPERATING SPECIFICATIONS

Ratio of Worm and Worm Wheel	40 to 1
Swivel of Head beyond vertical	10°
Swivel of Head below horizontal	5°
Swivel of Tail Stock	None
Taper of Spindle Nose—Brown & Sharpe	No. 9
Tail Stock	Not Adjustable
Divide all numbers to	50
Even numbers to (except 96T)	100
Collet Capacity	5/8"
Collet Type	4NS

AVAILABLE IN RIGHT OR LEFT HAND MODELS

STANDARD EQUIPMENT INCLUDES:

Head and Tail Stock centers
 Head Stock Spindle and Driving Dog
 Three Index Plates (15, 16, 17, 18, 19, 20, 21,
 23, 27, 29, 31, 33, 37-39, 41, 43, 47, 49)
 Tail Stock Complete
 24 Slotted Plate Furnished for Model SDD-6 1/2" only.
 Index Chart for all divisions to 380°

HEAD STOCK SPINDLE

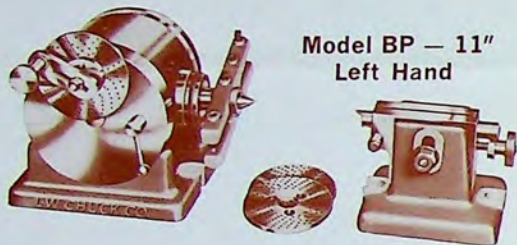
Front Tapered Bearing — Back mounted in Ball Bearing. Engineered to take up end thrust. Worm and Worm wheel can be fully disengaged for free turning of spindle on all models — adjustable for backlash.

Shipping Weight: 36 lbs.

LW • L-W DIVIDING HEAD SPECIFICATIONS (continued)



**Model BPD 11"
Left Hand**



**Model BP - 11"
Left Hand**



**Model AU - 11"
Left Hand**

Model AUD 11"

Also Available in Right or Left Hand

OVERALL DIMENSIONS

Length of Head Stock Base	10"
Width of Head Stock Base	8"
Length of Tail Stock Base	7 1/4"
Width of Tail Stock Base	6"
Height of Centers	5 1/2" + .005"
Maximum Diameter Self Centering Chuck	9"
Spindle Nose Threaded	2 1/4" x 10"
Hole Through Spindle	1 1/16"
Bottom Keys	3/8"

OPERATING SPECIFICATIONS

Ratio of Worm and Worm Wheel	40 to 1
Swivel of Head beyond vertical	10°
Swivel of Head below horizontal	5°
Swivel of Tail Stock	None
Taper of Spindle Nose-Brown & Sharpe	No. 10
Morse Taper-Available-extra charge	No. 4
Tail Stock - Adjustable for height	1/2"
Collet Capacity	3/4"
Collet Type	4C

AVAILABLE IN RIGHT OR LEFT HAND MODELS

STANDARD EQUIPMENT INCLUDES:

- Tail Stock
- Three Index Plates (15, 16, 17, 18, 19, 20, 21, 23, 27, 29, 31, 33, 37, 39, 41, 43, 47, 49)
- Centers and Drive Dog
- Index Chart for all divisions to 380°
- 24 Slotted Plate Furnished for Model BPD-11" only

HEAD STOCK SPINDLE: Front Tapered Bearing—Back mounted in Ball Bearing. Engineered to take up end thrust. Worm and Worm Wheel can be fully disengaged for free turning of spindle on all models — adjustable for backlash.

Shipping Weight: 140 lbs.

OVERALL DIMENSIONS

Length of Head Stock Base	10"
Width of Head Stock Base	8"
Length of Tail Stock Base	7 1/4"
Width of Tail Stock Base	6"
Height of Centers	5 1/2" + .005"
Max. Dia. Self Centering Chuck	9"
Spindle Nose Threaded	2 1/4" x 10"
Hole Through Spindle	1 1/16"
Bottom Keys	3/8"

OPERATING SPECIFICATIONS

Ratio of Worm and Worm Wheel	40 to 1
Swivel of Head beyond vertical	10°
Swivel of Head below horizontal	5°
Swivel of Tail Stock	None
Taper of Spindle Nose-Brown & Sharpe	No. 10
Morse Taper-Available - extra charge	No. 4
Tail Stock Adjustable for height	1/2"
Collet Capacity	3/4"
Collet Type	4C

AVAILABLE IN RIGHT OR LEFT HAND MODELS

HEAD STOCK SPINDLE: Front Tapered Bearing—Back mounted in Ball Bearing. Engineered to take up end thrust. Worm and Worm Wheel can be fully disengaged for free turning of spindle on all models — adjustable for backlash. Complete equipment for indexing and spiral cutting. Arbor for differential indexing also available at slight additional cost. Rear end of spindle has tapered hole to take differential Arbor for differential indexing.

Shipping Weight; 200 lbs.

ACCESSORIES for Models SD, SDD, BP, BPD, AU & AUD Dividing Heads



GRADUATED SWIVEL BASE

For Models SD, BP, AU, SDD, BPD & AUD

Accurately converts a conventional Dividing Head into a Universal Work Head or Rotary Table. Graduated 360°.



SLOTTED FACE PLATE

For Models BP, AU, BPD & AUD - 10" Threaded 2 1/4" x 10" For Models SD & SDD - 6" Threaded 1 1/2" x 8"



For Models BP, AU, BPD and AUD 2 1/2" High

RISER BLOCKS

Quickly — Accurately increase the swing capacity of your Dividing Head.



DRAWIN COLLET ATTACHMENT

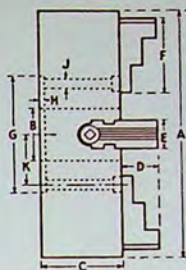
Drawin Bar and Collet Sleeve only — for Models BP, AU, BPD and AUD — 11" Heads. Will take up to 3/4" Round Collet — use standard type 4C Collet. Drawin Attachments and Collet Sleeve only — for Models SD and SDD — 6 1/2" Heads. Will take up to 3/8" Round Collet — use standard type 4NS Collet.

4-JAW INDEPENDENT CHUCKS

Typical of L-W craftsmanship and engineering, the Chuck body is made of semi-steel castings, heavily ribbed to hold up under unusual stress. Both face and outside diameter are ground for complete accuracy. The solid steel Jaws are hardened, ground, have wide gripping surfaces and are fully reversible. The precision-cut screws are made of tough, hardened nickel steel with square threads. Nickel alloy steel anchor bearings are hardened for satisfactory service under maximum pressure. Shipped complete with T-wrench.

DIMENSIONS

Size	A	B	C	D	E	F	G	H	J	K	Ship Wt.
6"	6	1½	2¼	1	¾	2½	3½	1½	2¾	2½	13½ lbs.
8"	8	2	2¼	1	¾	2½	3½	1½	2¾	2½	21 lbs.

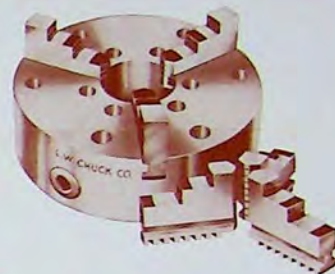
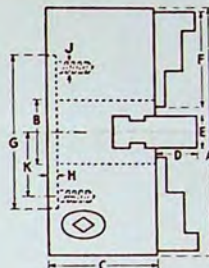


3-JAW UNIVERSAL CHUCKS

A perfect blend of strength, accuracy and fine workmanship, this Chuck is highly satisfactory for either light or heavy duty work, and is fully guaranteed to run true for either Lathe or Screw Machine work. Comes complete with two sets of Jaws, male and female. Jaws are of hardened and ground steel, accurately fitted. In keeping with L-W's policy of using only the highest quality materials, the Chuck body is a semi-steel casting for maximum strength and accuracy; Pinions are of high grade hardened steel, and the Scroll is of special alloy. Shipped complete with T-wrench.

DIMENSIONS

Size	A	B	C	D	E	F	G	H	J	Ship Wt.
5"	5	1½	1¾	1½	½	1¾	(Body Threaded) 1½ x 8			9 lbs.
6"	6	1½	2½	1½	¾	2½	3½	1½	¾	18 lbs.
7½"	7½	2	2½	1½	¾	3	3½	1½	¾	35 lbs.
9"	9	2½	2¾	1¾	1½	3½	4½	1½	¾	50 lbs.



5" — 3-JAW CHUCK

Body Threaded 1½" x 8 Thread. One Hardened Steel Pinion Alloy Scroll. Two Sets CONVENTIONAL JAWS. Chuck Wrench Included. Shipping weight, 9 lbs.



ADJUSTO-QUICK CONTROL

A simple turn left or right automatically adjusts Jaw pressure.



ADJUSTO QUICK •

Now, for the first time, a Wide Range Drill Press Vise that will safely handle both rigid and non-rigid work without distortion. A turn of the front adjusting screw bushing will vary the jaw pressure from 1 to 1500 lbs. Hardened and micro ground locking bar. Easy hand pressure will lock the work and hold fast.

VICES • LW

LW- 4" 6" 8" DRILL PRESS VISES

Size	Jaw Width	Jaw Depth	Jaw Opening	Shipping Weight
4"	4"	¾"	5½"	20 lbs.
6"	6"	¾"	6¼"	33 lbs.
8"	8"	¾"	8½"	52 lbs.

Removable Steel Jaw inserts allow simple adaption for Jigs and Fixtures. Large palm fitting grips.

Three Sizes • Flange Construction • Oil Well Bases

4½" JUNIOR VISE — Jaws: 4½" wide, 1¾" deep. Opens 2¼" with jaws, 3¼" without. Graduated base, used plain or swivel. Weight complete, boxed, 40 lbs.

6½" MASTER VISE — Jaws: 6½" wide, 2" deep. Opens 4" with jaws, 5¼" without. Graduated base, can be used plain or swivel. Large Acme steel screw, makes for sturdiness. Four bolt and key slots for rigid attachment. Weight complete with crank, boxed, 91 lbs.

8" MOGUL — A super-strong vise of flange

construction that is an unparalleled value in its size range. The ½" thick steel jaws measure 8½" wide and 2½" deep and open 6 inches when in place. There is full length bearing on the ground bar and machined ways.

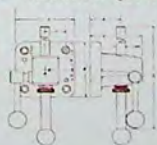
All surfaces are ground for extreme accuracy and the work holding surfaces are always held at true right angles or parallel to the table. Key slots are provided for attaching the vise rigidly to the machine table.

There is a large Acme steel screw with replaceable bronze nut. Weight 140 lbs.

L-W SWIVEL BASE MILLING MACHINE VISES



L-W 4" 5" JIG LOK • ADJUSTO QUICK



End of locking bar left soft 1" from end for easy machining to add your own fixtures. Same simple automatic Adjusto-Quick pressure control used exclusively on L-W Adjusto-Quick Vises.

MODEL	A	B	C	D	E	F	G	H	I	J
4" A.Q. JIG-LOK	9½"	2½"	3½"	4"	4"	1½"	1½"	¾"	.615	2½"
5" A.Q. JIG-LOK	11½"	2½"	3½"	5"	5"	1½"	1½"	1"	.740	2½"

L-W MAGNETIC CHUCK • Maximum Holding Power

Made in four sizes, these beautifully finished Chucks are designed for use under any conditions where a magnetic chuck is required. We guarantee them to be of the highest quality workmanship, to furnish maximum magnetic holding power and to be completely waterproof for either wet or dry grinding. All Chucks are furnished with rubber cords, and are connected for 110 Volt, DC operation when shipped. Readily adaptable to 220 Volt, DC, operation. L-W Magnetic Chucks cannot be operated on Alternating Current; if you do not have Direct Current available, you must use a suitable rectifier.

Size	Amps.	Shipping Weight	Size	Amps.	Shipping Weight
5 1/4" x 13"	.8	60 Lbs.	8" x 24"	1.4	170 Lbs.
6 1/2" x 18"	1.	100 Lbs.	10 3/4" x 37"	2.8	350 Lbs.



L-W SILICON RECTIFIER • For use with Magnetic Chucks

When Direct Current is not readily available, these Rectifiers are ideal for converting Alternating Current (AC) to Direct Current (DC), for Magnetic Chucks. They are rated for continuous duty, and L-W precision workmanship guarantees an exceptionally long life. Model ER-4 tube type only.

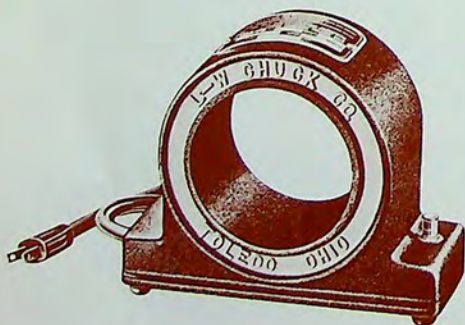
Model	Input	Output	Output Amp.	Model	Input	Output	Output Amp.
P-1 for 5 x 13 Chuck	110-220 A.C.	110 D.C.	0.8	P-3 for 8 x 24, 10 x 37	110-220 A.C.	110 D.C.	3.0
P-2 for 6 1/2 x 18	110-220 A.C.	110 D.C.	1.0	ER-4 for 6 1/2 x 18	110-220 A.C.	220 D.C.	1.0



L-W DEMAGNETIZER • Models B-2 and J-1

Two stationary-pole type Demagnetizers, to fill all requirements for removing magnetism from work magnetized through induction. Precision engineered for both large and small work. One movement of the affected part over the stationary poles completely demagnetizes. Model B-2 comes complete with pilot light signal, switch and cord. Model J-1 with switch and cord, ready for use.

Model	Width	Length	Height	Current	Weight
B-2	7 3/4"	12 1/2"	6 3/4"	110 Volt AC	55 lbs.
J-1	7 1/4"	7 1/4"	6 3/4"	110 Volt AC	35 lbs.



L-W ROUND COIL TYPE DEMAGNETIZER

Easy, push-button control provides instantaneous demagnetizing; requires no physical contact with affected part. Simply pass the work through the large 3 3/4" diameter opening. May also be used for magnetizing as well. The simple operating instructions are permanently attached to the top. The Demagnetizer has no moving parts, operates on 110 Volt, 60 Cycle, AC current, and comes complete with cord and plug. Shipping weight: 6 1/2 lbs.

DEMAGNETIZING SWITCHES

Simple and positive operation: "ON" positive magnetizes the Chuck and holds work firmly for grinding. To release the work, switch is thrown to "DEMAG," and contacts are touched momentarily, which reverses the current and neutralizes the Chuck.



LW CHUCK COMPANY, INC.

Phone (419) 241-1167 • TOLEDO, OHIO 43602 • 28 South St. Clair St.

Effective

NET PRICE LIST

MARCH 1, 1972

ALL PRICES SUBJECT TO CHANGE WITHOUT NOTICE
PRICED F.O.B. TOLEDO, OHIO
TERMS 30 DAYS NET — POSITIVELY NO DISCOUNT

L-W Swivel Base Milling Machine Vises

8" Mogul Vise	\$187.00
8" Mogul Vise Less Swivel Base	169.50
6½" Master Vise	100.00
6½" Master Vise Less Swivel Base	92.00
4½" Junior Vise	65.00
4½" Junior Vise Less Swivel Base	61.00

L-W Drill Press Vises

4" Adjusto Quick Vise	\$ 40.00
6" Adjusto Quick Vise	56.00
8" Adjusto Quick Vise	73.00

L-W Jig-Loks

4" Adjusto Quick	\$ 28.75
5" Adjusto Quick	35.75

L-W Lathe Chucks

8" Independent, 4 Jaw	\$ 88.00
6" Independent, 4 Jaw	66.00
9" Universal, 3 Jaw	237.00
7½" Universal, 3 Jaw	157.00
6" Universal, 3 Jaw	102.00
5" Universal, 3 Jaw	58.00

Semi-Finished Adapter Plates — Less Threaded Hole

6" Independent	\$ 14.00
8" Independent	14.00
6" Universal	\$ 16.00
7½" Universal	16.00
9" Universal	22.00

Semi-Finished Adapter Plates For Independent Chucks★

6" & 8" Independent 1½"-8	\$16.00
6" & 8" Independent 2¼"-8	16.00
6" & 8" Independent 2¼"-10	16.00

Semi-Finished Adapter Plates For Universal Chucks★

6" Universal 1½"-8	\$ 17.00
6" 7½" Universal 2¼"-8	18.00
6" 7½" Universal 2¼"-10	18.00
9" Universal 2¼"-8	24.00
9" Universal 2¼"-10	24.00

* Additional charge \$5.00 for finishing and mounting semi-finished adapter plates to chucks.

L-W Direct Indexing Dividing Heads

Model AUD 11"	\$738.00
Model BPD 11"	479.00
Model SDD 6½"	297.00

L-W Conventional Indexing Dividing Heads

Model AU 11" for Universal Mills, Spiral Cutting	\$688.00
Model BP 11" for Plain Mills	428.00
Model SD 6½" for Plain Mills	259.00

L-W Dividing Head Attachments For Models BPD, AUD, BP & AU

Graduated Swivel Base	\$125.00
Rising Blocks, 2½" High, Pair	65.00
10" Slotted Face Plate	40.00
Drawin Attachment and Collet Sleeve only	37.50
Unslotted Direct Indexing Plate	15.00
Rear Spindle Differential Arbor for Model AU & AUD	40.00

L-W Dividing Head Attachments For Models SDD & SD

Graduated Swivel Base	\$ 75.00
Riser Blocks, 2" High, Pair	40.00
6" Slotted Face Plate	24.00
Drawin Attachment and Collet Sleeve only	37.50
Unslotted Direct Indexing Plate	15.00

L-W Magnetic Chucks

Working Surface 10¾" x 37"	\$470.00
Working Surface 8" x 24"	275.00
Working Surface 6½" x 18"	120.00
Working Surface 5¾" x 13"	99.00

L-W Demagnetizers

Model B-2 — 7¼" x 12½" x 6¾"	\$ 98.00
Model J-1 — 7¼" x 7¼" x 6¾"	70.00
Round Coil-Type 3¾" Opening	35.00

L-W Silicon Rectifiers

P-1 for 5¼ x 13 Chuck — 110-220 AC 110 DC 0.8	\$ 62.00
P-2 for 6½ x 18 Chuck — 110-220 AC 110 DC 1.0	74.00
P-3 for 8 x 24, 10 x 37 Chuck — 110-220 AC 110 DC 3.0	93.00
ER-4 Tube Type — 110-220 AC — 220 DC 1.0 Amp.	74.00

Demagnetizing Switches

Field Discharge Type	\$ 30.00
L-W Demagnetizing Switch	16.00

L-W CHUCK COMPANY

TELEPHONE (419) 241-1167

24 SOUTH ST. CLAIR STREET

TOLEDO, OHIO 43602

Effective

DEALER'S NET PRICE LIST

MARCH 1, 1972

ALL PRICES SUBJECT TO CHANGE WITHOUT NOTICE
PRICED F.O.B. TOLEDO, OHIO
TERMS 30 DAYS NET — POSITIVELY NO DISCOUNT

L-W Swivel Base Milling Machine Vises

8" Mogul Vise	\$140.00
8" Mogul Vise Less Swivel Base	127.00
6½" Master Vise	75.00
6½" Master Vise Less Swivel Base	69.00
4½" Junior Vise	49.00
4½" Junior Vise Less Swivel Base	46.00

L-W Drill Press Vises

4" Adjusto Quick Vise	\$30.50
6" Adjusto Quick Vise	42.40
8" Adjusto Quick Vise	54.85

L-W Jig-Loks

4" Adjusto Quick	\$21.50
5" Adjusto Quick	26.90

L-W Lathe Chucks

8" Independent, 4 Jaw	\$ 66.00
6" Independent, 4 Jaw	50.00
9" Universal, 3 Jaw	177.75
7½" Universal, 3 Jaw	118.00
6" Universal, 3 Jaw	76.75
5" Universal, 3 Jaw	43.75

Semi-Finished Adapter Plates — Less Threaded Hole

6" Independent	\$ 12.00
8" Independent	12.00
6" Universal	\$ 14.00
7½" Universal	14.00
9" Universal	20.00

Semi-Finished Adapter Plates For Independent Chucks★

6" & 8" Independent 1½"-8	\$ 14.00
6" & 8" Independent 2¼"-8	14.00
6" & 8" Independent 2¼"-10	14.00

Semi-Finished Adapter Plates For Universal Chucks★

6" Universal 1½"-8	\$ 15.00
6" 7½" Universal 2¼"-8	17.00
6" 7½" Universal 2¼"-10	17.00
9" Universal 2¼"-8	22.00
9" Universal 2¼"-10	22.00

* Additional charge \$5.00 for finishing and mounting semi-finished adapter plates to chucks.

L-W Direct Indexing Dividing Heads

Model AUD 11"	\$553.50
Model BPD 11"	359.25
Model SDD 6½"	222.75

L-W Conventional Indexing Dividing Heads

Model AU 11" for Universal Mills, Spiral Cutting	\$516.00
Model BP 11" for Plain Mills	321.00
Model SD 6½" for Plain Mills	195.00

L-W Dividing Head Attachments For Models BPD, AUD, BP & AU

Graduated Swivel Base	\$100.00
Rising Blocks, 2½" High, Pair	52.00
10" Slotted Face Plate	32.00
Drawin Attachment and Collet Sleeve only	30.00
Unslotted Direct Indexing Plate	12.00
Rear Spindle Differential Arbor for Model AU & AUD	36.00

L-W Dividing Head Attachments For Models SDD & SD

Graduated Swivel Base	\$ 60.00
Riser Blocks, 2" High, Pair	32.00
6" Slotted Face Plate	19.00
Drawin Attachment and Collet Sleeve only	30.00
Unslotted Direct Indexing Plate	12.00

L-W Magnetic Chucks

Working Surface 10¾" x 37"	\$355.00
Working Surface 8" x 24"	206.00
Working Surface 6½" x 18"	90.00
Working Surface 5¾" x 13"	75.00

L-W Demagnetizers

Model B-2 — 7¼" x 12½" x 6¾"	\$ 74.00
Model J-1 — 7¼" x 7¼" x 6¾"	53.00
Round Coil-Type 3¾" Opening	27.00

L-W Silicon Rectifiers

P-1 for 5¾ x 13 Chuck — 110-220 AC 110 DC 0.8	\$ 49.60
P-2 for 6½ x 18 Chuck — 110-220 AC 110 DC 1.0	60.00
P-3 for 8 x 24, 10 x 37 Chuck — 110-220 AC 110 DC 3.0	75.00
ER-4 Tube Type — 110-220 AC — 220 DC 1.0 Amp.	60.00

Demagnetizing Switches

Field Discharge Type	\$ 25.00
L-W Demagnetizing Switch	13.00

L-W CHUCK COMPANY

TELEPHONE (419) 241-1167

24 SOUTH ST. CLAIR STREET

TOLEDO, OHIO 43602