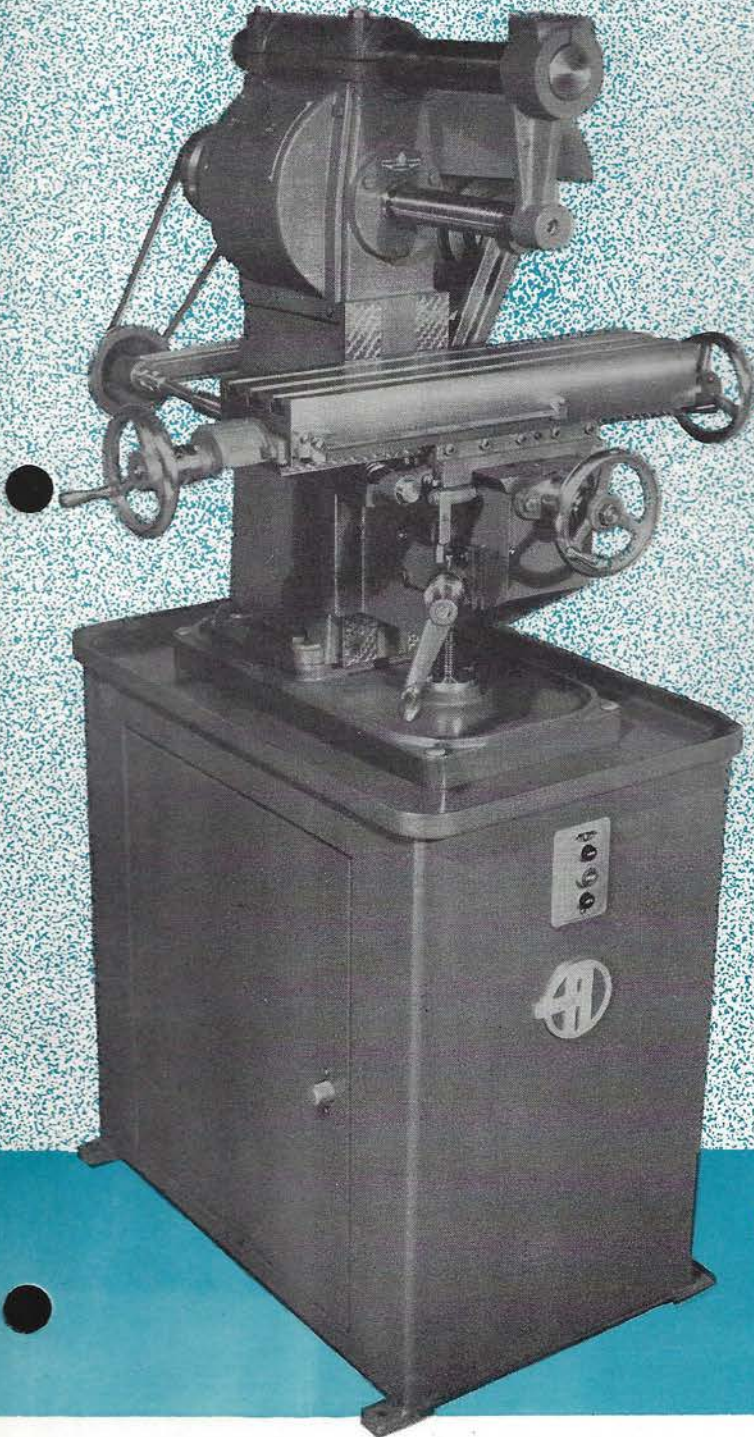


PROTEX

BENCH MILLING MACHINE **MODEL R M - 1**

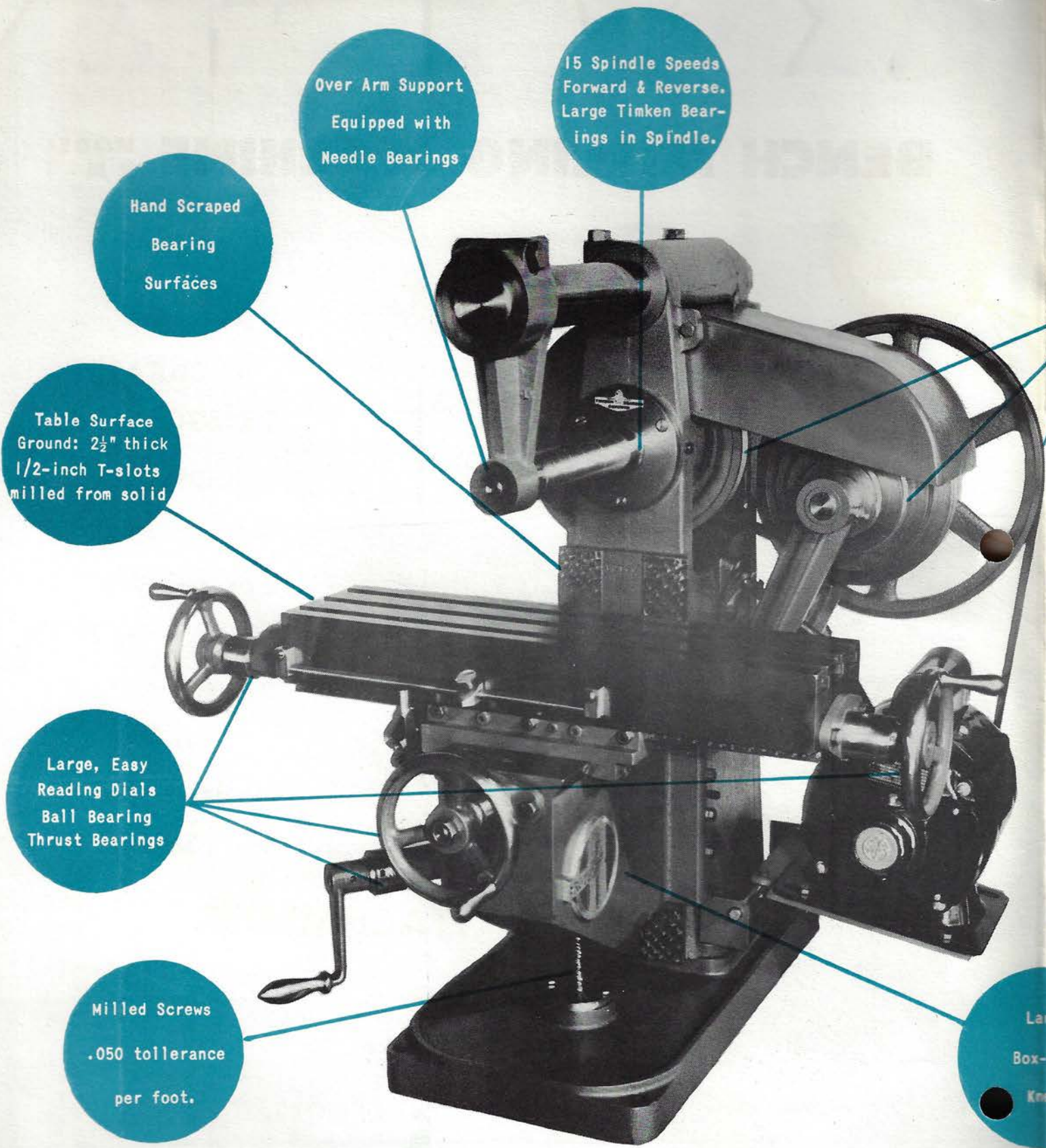


- ACCURATE
- RUGGED
- ECONOMICAL

For Use In . . .
Manufacturing Plants
Experimental Labs
Tool Rooms
Universities
Schools
Home Hobby Shops

HANDLES ALL MILLING OPERATIONS
(Cabinet Base Optional)

ROTEX BENCH MILLING



Over Arm Support
Equipped with
Needle Bearings

15 Spindle Speeds
Forward & Reverse.
Large Timken Bearings
in Spindle.

Hand Scraped
Bearing
Surfaces

Table Surface
Ground: 2½" thick
1/2-inch T-slots
milled from solid

Large, Easy
Reading Dials
Ball Bearing
Thrust Bearings

Milled Screws
.050 tolerance
per foot.

Large
Box-
Knee

MACHINE

THE MODEL RM-1 provides a high range of precision performance within the low range price class. Combining compactness and rigidity of construction with unusual versatility, the RM-1 meets the most exacting requirements of experimental model work and small production shops. Operating simplicity, production accuracy and high output capacity... qualities heretofore found only in larger and higher priced machines... add constantly to the number of satisfied users of the RM-1.

A List of the Outstanding Features of the RM-1

- Power Feed to Table is standard on all models.
- Large overarm arbor support equipped with needle bearings.
- All castings made of highest grade semi-steel.
- Solid 1-piece column for rigidity.
- Spindle Speeds 100 to 1400 R.P.M.
- Large Timken Bearings in spindle.
- Quick-change motor mounting base.
- Table, saddle, and knee screw nuts made of tin bearing bronze.
- Hinged Jack-shaft pulley guard to permit quick belt change.
- Recommended Motor: 1/2 H.P. or 3/4 H.P.

(OTHER MOTORS AFFORDING SLOWER SPINDLE SPEEDS AVAILABLE)

V-Belt
Pulleys
Throughout

SPECIFICATIONS

Working Surface of Table.....	5 x 20 inches
Longitudinal Feed	12 inches
Traverse Feed	5 inches
Vertical Feed - 3 Slot Table	8 $\frac{1}{4}$ inches
(RISER BLOCKS OFFERING ADDITIONAL 2" VERTICAL FEED AVAILABLE)	
Width of Tee Slots	1/2 inch
(Standard Table has 3 Tee slots)	
Approximate Weight (Net).....	450 pounds
Dimensions (including handles).....	36 x 36 inches
Height	31 inches

POWER FEEDS, PER SPINDLE REVOLUTION: .003, .006 & .012. CHOICE OF NO. 4 MORSE TAPER OR NO. 9 OR NO. 10 BROWN & SHARPE IN SPINDLE. 3/4-INCH HOLE THROUGH SPINDLE. TAPERED ROLLER BEARINGS

Design and specifications subject to change without notice.

ATTACHMENTS

• Dividing Centers: Gears with 3/4-inch Hole Used as Index Plates. Spindle Threaded One-inch, 8 threads. No. 2 Morse Taper (17/32-inch Hole Through).

Universal Vertical Head self contained motor (see insert sheet)

Vice: 4" x 1 $\frac{1}{2}$ "

Drip pot or a Motorized Coolant System

Outboard Support.

Assorted Arbors.

Splash Guards.

Rear Belt Guard.

ROTEX METAL WORKING EQUIPMENT

CATALOGS SENT ON REQUEST



1. ROTEX HYDRAULIC METAL CUTTING PLANER

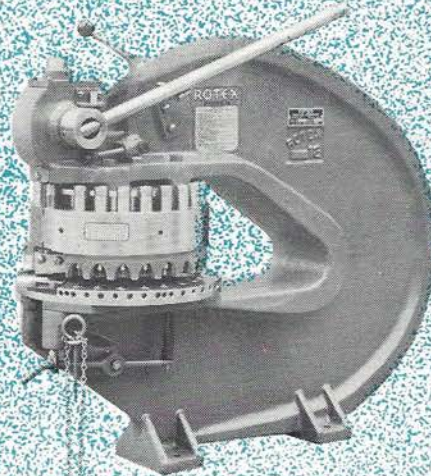
Size, 12" x 12" x 24"

2. ROTEX BENCH PRESS Model "O", Single Unit

Single punch press. 1/32" to 1 1/4" maximum capacity, plus odd shapes within capacity.

3. ROTEX TURRET PUNCH, Model 18a

4. ROTEX ARBOR PRESS Model 1



DISTRIBUTED BY



Manufactured by

ROTEX PUNCH COMPANY, INC.

2350 ALVARADO STREET

SAN LEANDRO, CALIFORNIA