

№ 35.

S-351477

GRAND RAPIDS GRINDERS

Manufactured by

GALLMEYER & LIVINGSTON CO.

GRAND RAPIDS, MICHIGAN 49502

~~616/451-2865~~



PARTS EXT.

(6) 330-794-1960

REPAIR PARTS CATALOG

FOR

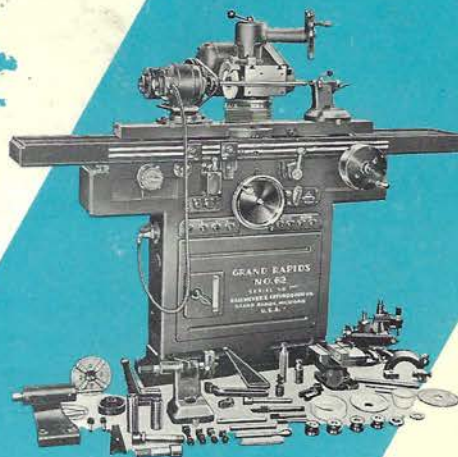
NO. 35 & 36 SURFACE GRINDER

Ser # S-35-1455

Ser # S-35-1459

GRAND RAPIDS GRINDERS

Grand Rapids Hydraulic Feed Universal and Tool Grinders and Grand Rapids Universal Cutter and Tool Grinders are available in sizes to meet every requirement. They are the result of nearly 50 years of experience in the building of Precision Grinding Machines.

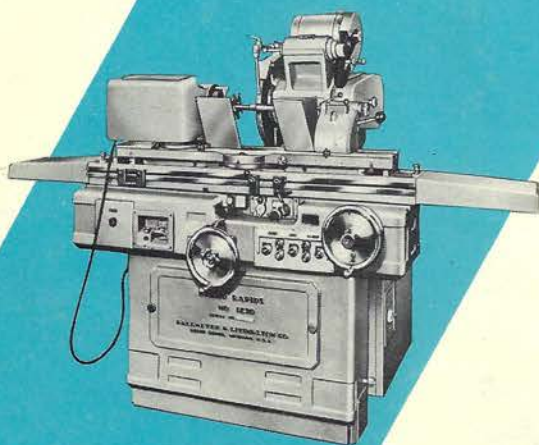


No. 60 and No. 62 Grand Rapids Universal Cutter and Tool Grinders

are modern cabinet type base machines featuring anti-friction ball bearing table and are designed to meet the requirements of the plant interested in purchasing the most up to date equipment of this type.

Machine equipped with power feed, as illustrated, also available.

These machines are featured and described in bulletin GL-4-66.



No. 1230 GRAND RAPIDS Hydraulic Feed O.D. & I.D. Grinder

A most versatile, modern, Hydraulic Feed Machine designed primarily for tool room work, or small production runs. The machine will swing work up to 12" in diameter and take 30" between centers.

A complete range of internal grinding spindles are available.

Incremental infeed can be provided as a factory installed 'extra'.

Complete description of machines, in bulletin GL-10-65.

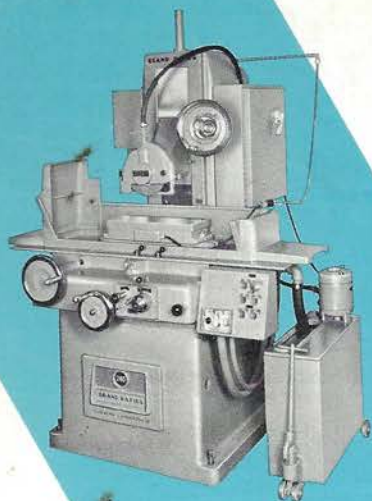
Manufactured By

GALLMEYER & LIVINGSTON COMPANY

336-46 Straight Ave., S. W.

GRAND RAPIDS, MICHIGAN 49502, U.S.A.

GRAND RAPIDS GRINDERS



No. 250 Grand Rapids Hydraulic Feed Surface Grinder

is our smallest Precision Tool Room Type Machine has 6" x 18" working surface of table and capacity of 15" under a full 8" diameter wheel. Longitudinal table speeds from 3" to 150' per minute are instantly obtainable.

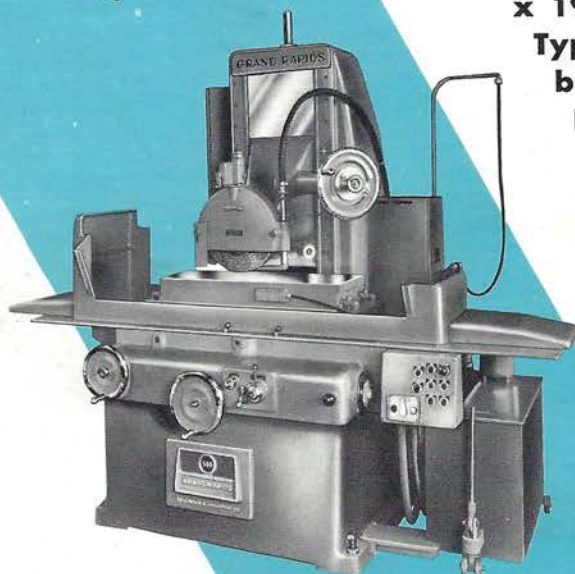
No. 560 Grand Rapids Precision Tool Room Type Hydraulic Feed Surface Grinder

has 14" x 36" working surface of table a capacity of 18" under a full 14" diameter wheel. Longitudinal speeds from 3" to 150' are instantly obtainable.

All Grand Rapids Precision Tool Room Type Hydraulic Feed Surface Grinders have full hydraulic cross feed with provision for a continuous cross feed for quick positioning and wheel dressing, and for automatic reversal of the saddle at any predetermined point.

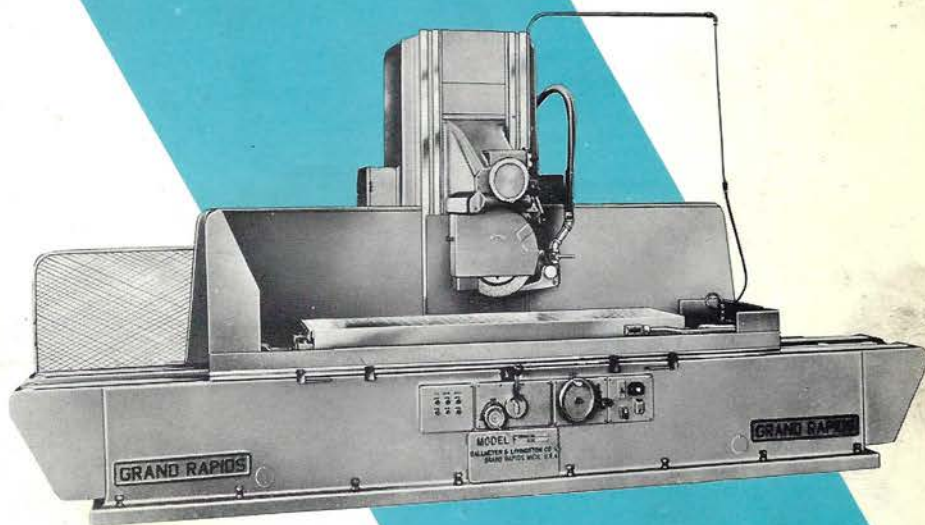
Grand Rapids Production Type Hydraulic Feed Surface Grinders

are available in sizes ranging from 12" x 18" x 36" to 36" x 36" x 196". The larger and heavier Model F Machines have provision for longitudinal table speeds from 10' to 150' per minute, making them the fastest of all Surface Grinders. Features of unusual merit are emphasized in bulletin GL-1-10-67.



Grand Rapids Hydraulic Feed Surface Grinders are manufactured in sizes from 6" x 15" x 18" to 36" x 25" x 196". The Precision Tool Room Type Machines are described in bulletin GL-2-65, and the larger Production Type Machines in bulletin GL-8-10-66.

Incrematic® or Visamatic® available on all hydraulic feed surface grinders.



Manufactured By

GALLMEYER & LIVINGSTON COMPANY

336-46 Straight Ave., S. W.

GRAND RAPIDS, MICHIGAN 49502, U.S.A.

GALLMEYER & LIVINGSTON CO.

Grand Rapids, Mich.

ORDERING INSTRUCTIONS

The Gallmeyer & Livingston Co. has a record of all parts used in your machine and usually can supply them on short notice. On the following pages are shown parts assembly drawings to assist in ordering replacement parts.

In order that prompt service may be rendered, the following information must be supplied with orders for repair parts.

1. Quantity of pieces required.
2. Name and Number of parts as listed.
3. Number of assembly drawing.
4. Model of machine.
5. Serial Number of machine.

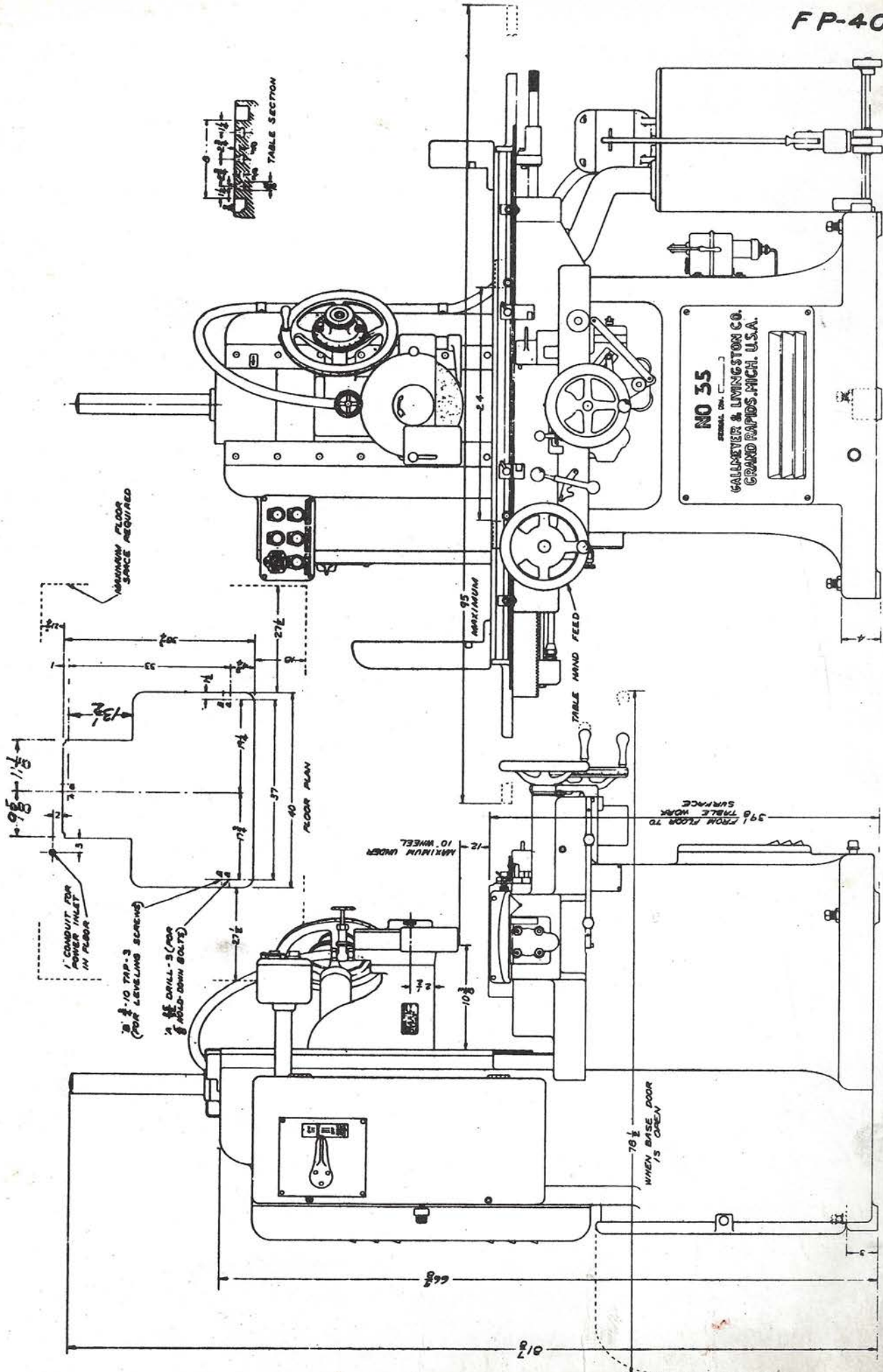
The Model and Serial Number is to be found on the name plate on the base of the machine.

Example of how to order a part:

One (1) Feed Screw, S-1669-1,
Drawing No. LSG-301.
For No. 55 Surface Grinder,
Serial No. S-55310.

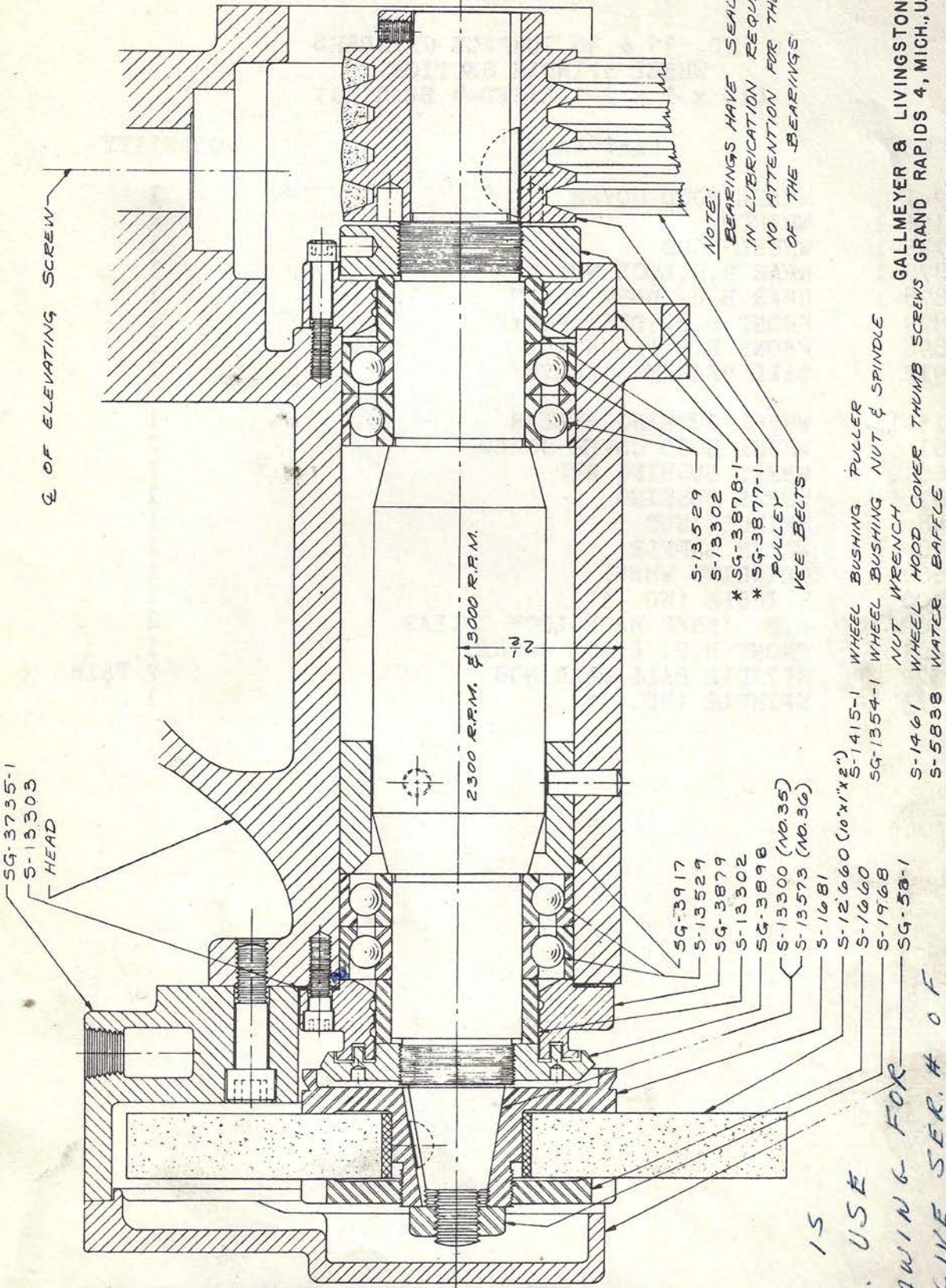
Occasionally it may be necessary, when one part is ordered, to include one or more additional parts made necessary by replacement of first part.

If you cannot find the required part in this book, give its description, location and function. Always give the Model and Serial Number of the machine and the Quantity of pieces required.



GALLMEYER & LIVINGSTON CO.
 GRAND RAPIDS 4, MICH., U.S.A.
 NO. 35 SURFACE GRINDER - WET - 8 X 24 TABLE
 (SHOWN WITH FRONT & REAR
 SPLASH GUARDS REMOVED)

LSG-685-2



SG-3735-1
S-13303
HEAD

Q OF ELEVATING SCREW

2300 R.P.M. @ 3000 R.P.M.

2 1/2

NOTE:
BEARINGS HAVE SEALED
IN LUBRICATION REQUIRING
NO ATTENTION FOR THE LIFE
OF THE BEARINGS

S-13529
S-13302
* SG-3878-1
* SG-3877-1
PULLEY
VEE BELTS

S-1415-1 WHEEL BUSHING PULLER
SG-1354-1 WHEEL BUSHING NUT & SPINDLE
S-1461 NUT WRENCH
S-5838 WHEEL HOOD COVER THUMB SCREWS GRAND RAPIDS 4, MICH., U.S.A.
S-5838 WATER BAFFLE

SG-3917
S-13529
SG-3879
S-13302
SG-3898
S-13300 (NO. 35)
S-13573 (NO. 36)
S-1681
S-12660 (10" X 12")
S-1660
S-1968
SG-58-1

GALLMEYER & LIVINGSTON CO.
NO. 35 & 36 SURFACE GRINDERS
WHEEL SPINDLE SECTION
(FOUR BEARINGS)

LOCATING FIXTURE T-2066

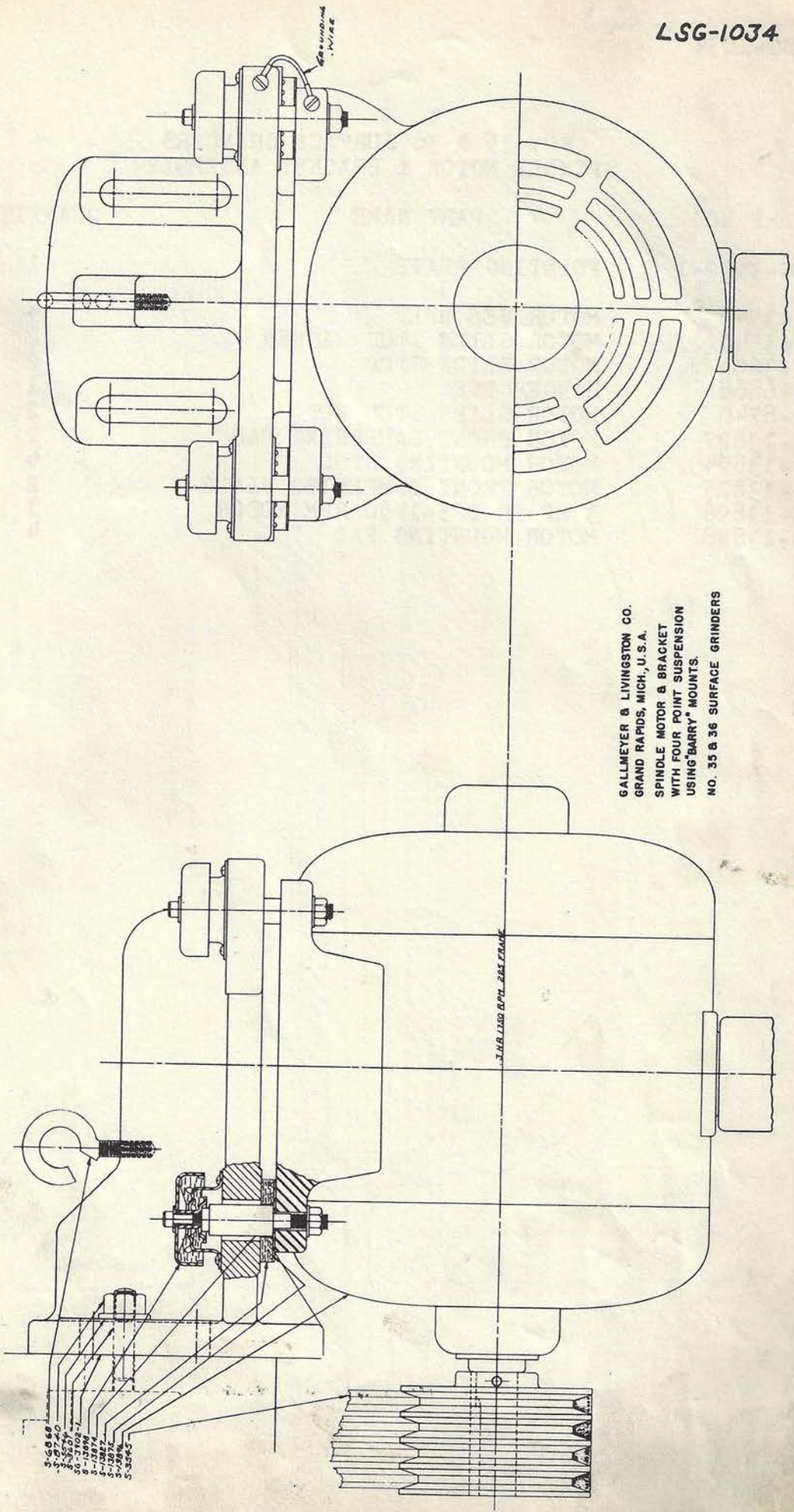
NOTE:
SPINDLE IS
SPECIAL USE
THIS DRAWING FOR
PARTS. GIVE SER. # OF
MACHINE. PROPER PARTS WILL
B.B. INST. # 642
* CHANGED TO -1 (4/15/52)

LSG-685-2

NO. 35 & 36 SURFACE GRINDERS
WHEEL SPINDLE SECTION
(10 x 1 x 2-GREASED-4 BEARING)

PART NO.	PART NAME	QUANTITY
SG-52-1	WHEEL HOOD COVER	1
SG-1354-1	WRENCH	1
SG-3735-1	WHEEL HOOD	1
SG-3877-1	REAR B.B. LOCK NUT	1
SG-3878-1	REAR B.B. DUST PLATE	1
SG-3879	FRONT B.B. DUST PLATE	1
SG-3898	FRONT B.B. LOCK NUT	1
SG-3917	BALL BEARING SLEEVE	1
S-1415-1	WHEEL BUSHING PULLER	1
S-1461	WHEEL HOOD COVER SCREW	2
S-1660	WHEEL BUSHING NUT	1
S-1681	WHEEL BUSHING	1
S-1968	SPINDLE NUT	1
S-5838	WATER BAFFLE	1
S-12660	GRINDING WHEEL	1
S-13300	SPINDLE (NO. 35)	1
S-13302	B.B. INNER RACE LOCK COLLAR	2
S-13303	FRONT B.B. PLATE GASKET	1
S-13529	SPINDLE BALL BEARINGS	2 PAIR
S-13573	SPINDLE (NO. 36)	1

LSG-1034



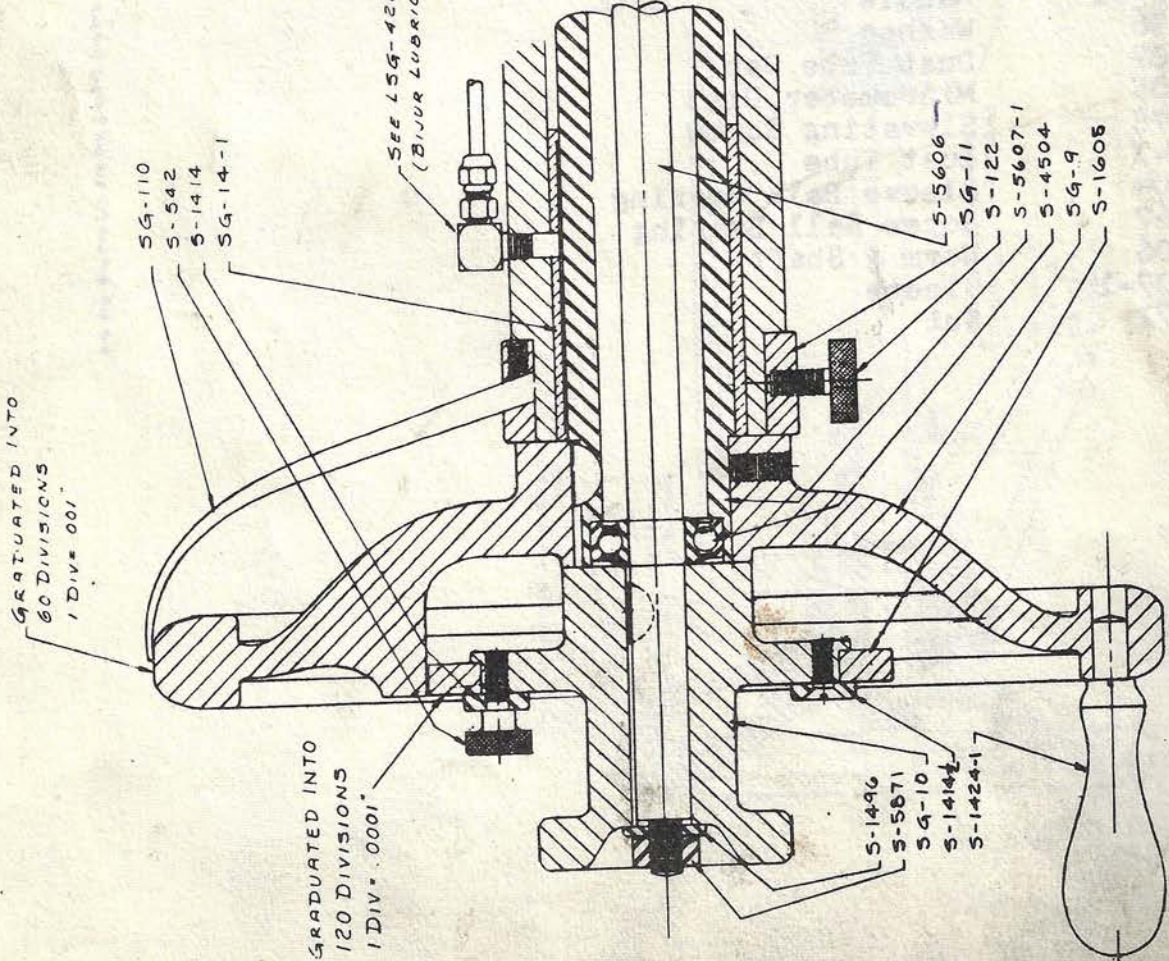
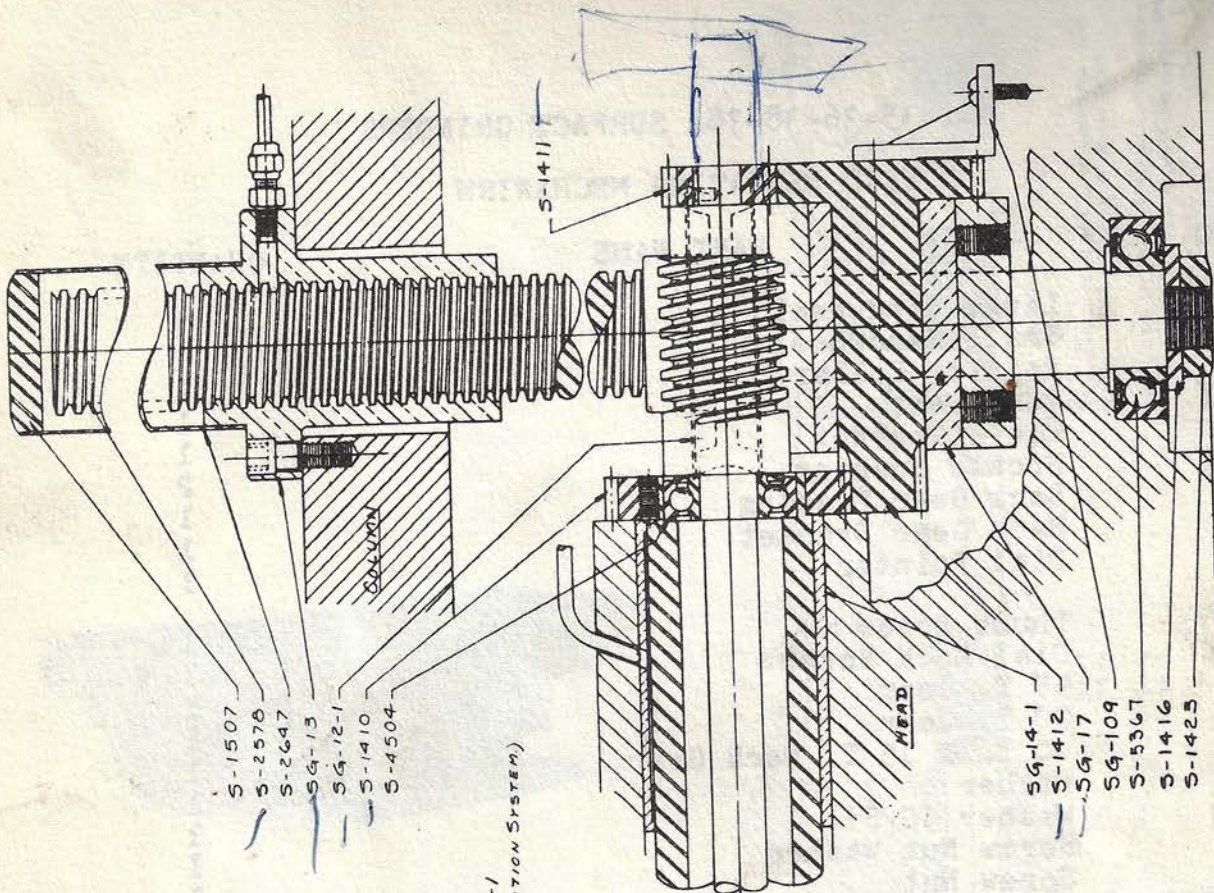
GALLMEYER & LIVINGSTON CO.
GRAND RAPIDS, MICH., U.S.A.
SPINDLE MOTOR & BRACKET
WITH FOUR POINT SUSPENSION
USING "BARRY" MOUNTS.
NO. 35 & 36 SURFACE GRINDERS

LSG-1034

NO. 35 & 36 SURFACE GRINDERS
SPINDLE MOTOR & BRACKET ASSEMBLY

PART NO.	PART NAME	QUANTITY
SG-3902-1	MOUNTING PLATE	1
S-3545	MOTOR VEE BELT	4
S-3546	MOTOR SLIDE STUD WASHER	2
S-3601	MOTOR SLIDE STUD	2
S-6868	HANGER EYE	1
S-8740	MOTOR SLIDE STUD NUT	2
S-13827	MOTOR FRONT DAMPENING PAD	2
S-13874	MOTOR MOUNTING STUD	4
S-13875	MOTOR FRONT DAMPENING PLATE	2
S-13896	3 HP-FR 225-1750 RPM MOTOR	1
S-13898	MOTOR MOUNTING PAD	4

LSG-287-1



GALLMEYER & LIVINGSTON CO.
GRAND RAPIDS, MICH., U.S.A.
NO. 35-36-30 & 30A SURFACE GRINDERS
HEAD ELEVATING MECHANISM

PATENTED

LSG-287-1

NO. 35-36-38-38A SURFACE GRINDERS

HEAD ELEVATING MECHANISM

PART NO.	PART NAME	QUANTITY
SG-9	Large Handwheel	1
SG-10	Small Handwheel	1
SG-11	Pointer Collar	1
SG-12-1	Worm Gear	1
SG-13	Elevating Nut	1
SG-14-1	Bronze Bushing	2
SG-17	Back Gear Bushing	1
SG-109	Back Gear Bracket	1
SG-110	Dial Pointer	1
S-122	Thumb Screw	1
S-542	Dial Lock Screw	1
S-1410	45 T. Gear	1
S-1411	20 T. Gear	1
S-1412	40 T. & 15 T. Back Gear	1
S-1414	Washer	1
S-1414 $\frac{1}{2}$	Washer (C/S)	1
S-1416	Screw Nut Washer	1
S-1423	Screw Nut	1
S-1424-1	Handle	1
S-1496	Washer	1
S-1507	Dust Tube Cap	1
S-1605	Micrometer Dial	1
S-2578	Elevating Screw	1
S-2647	Dust Tube	1
S-4504	Sleeve Ball Bearing	2
S-5367	Screw Ball Bearing	1
S-5606	Worm & Shaft	1
S-5607-1	Sleeve	1
S-5871	Nut	1

S-351096



GRADUATED INTO 200 DIV.
1 TURN = .001" 1 DIV. = .001"

SG-3717
UG-261
S-12061
UG-106

SADDLE

S-41
S-1424-1

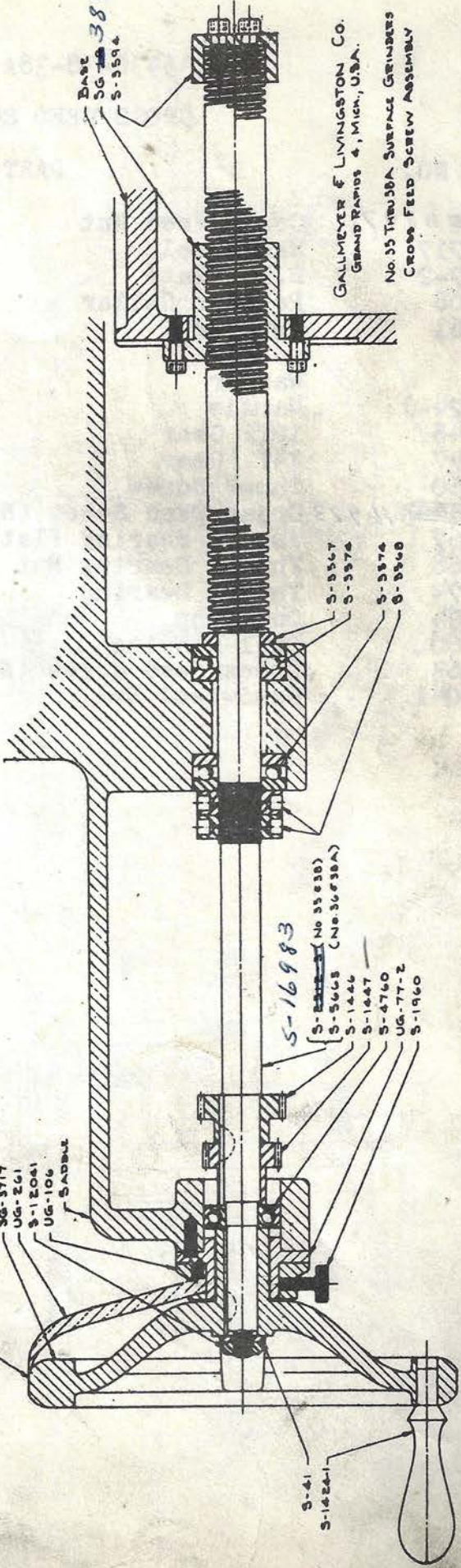
S-16983

S-2222 (No. 35 838)
S-5668 (No. 36 838A)
S-1426
S-1447
S-4760
UG-77-2
S-1960

Base
SG-3897
S-3594

GALLMEYER & LIVINGSTON CO.
GRAND RAPIDS 4, MICH., U.S.A.
No. 35 THROUGH SURFACE GRINDERS
CROSS FEED SCREW ASSEMBLY

L5G-373

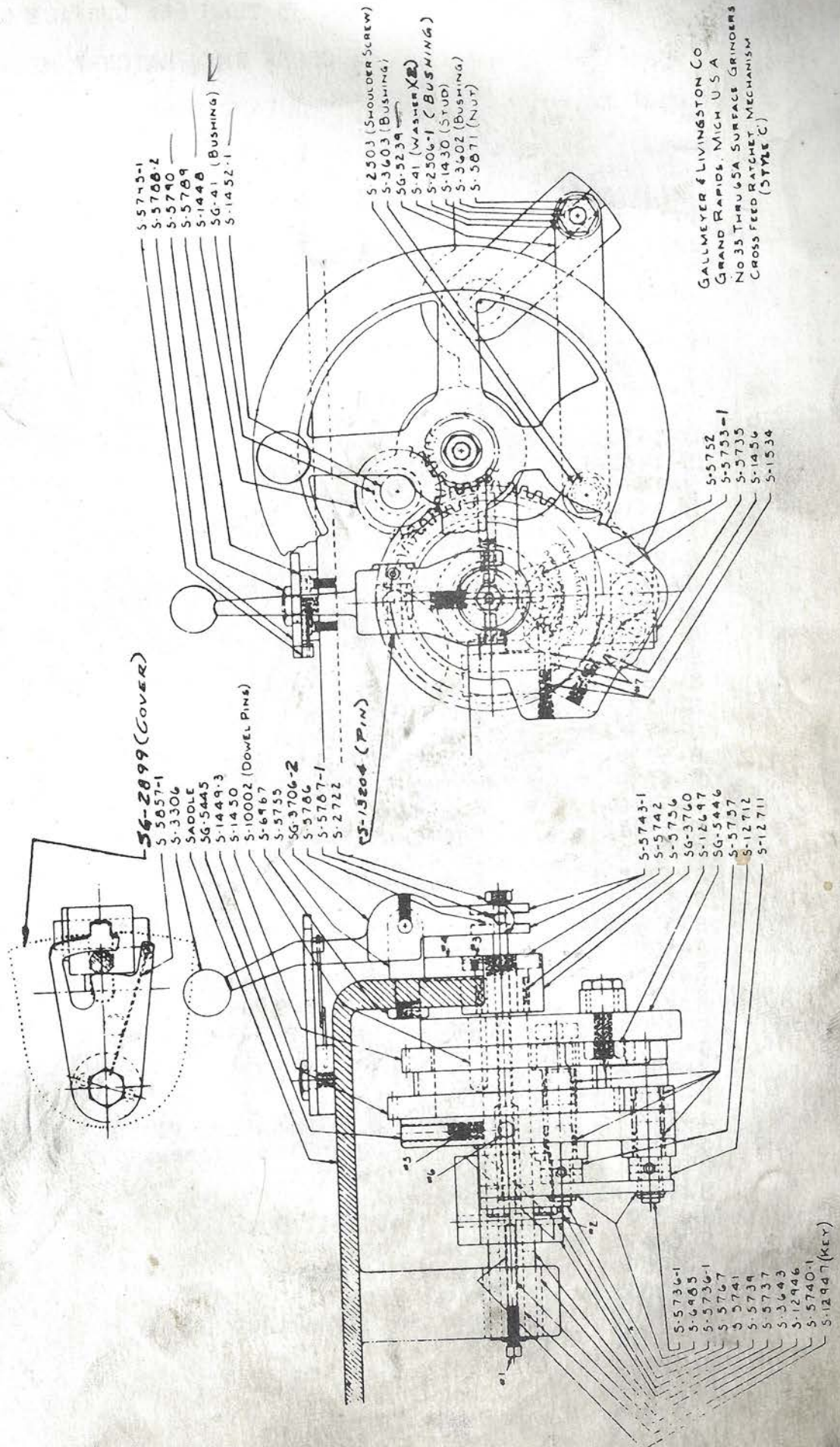


LSG-373

NO. 35-36-38-38A SURFACE GRINDERS

CROSS FEED SCREW ASSEMBLY

PART NO.	PART NAME	QUANTITY
SG-19 ³⁸⁹⁷	Cross Feed Nut	1
SG-3717	Handwheel	1
UG-77-2	B.B. Plate	1
UG-106	Pointer Collar	1
UG-261	Pointer	1
S-41	Washer	1
S-1424-J	Handle	1
S-1446	16T. Gear	1
S-1447	14T. Gear	1
S-1960	Thumb Screw	1
S-2512 ¹⁶⁹⁸³	Cross Feed Screw (No. 35 & 38) <i>HARDENED</i>	1
S-3567	Thrust Bearing Plate	1
S-3568	Thrust Bearing Nut	2
S-3574	Thrust Bearing	2
S-3594	Out Stop	1
S-4760	Ball Bearing	1
S-5663	Cross Feed Screw (No. 36 & 38A)	1
S-12041	Handwheel Nut	1



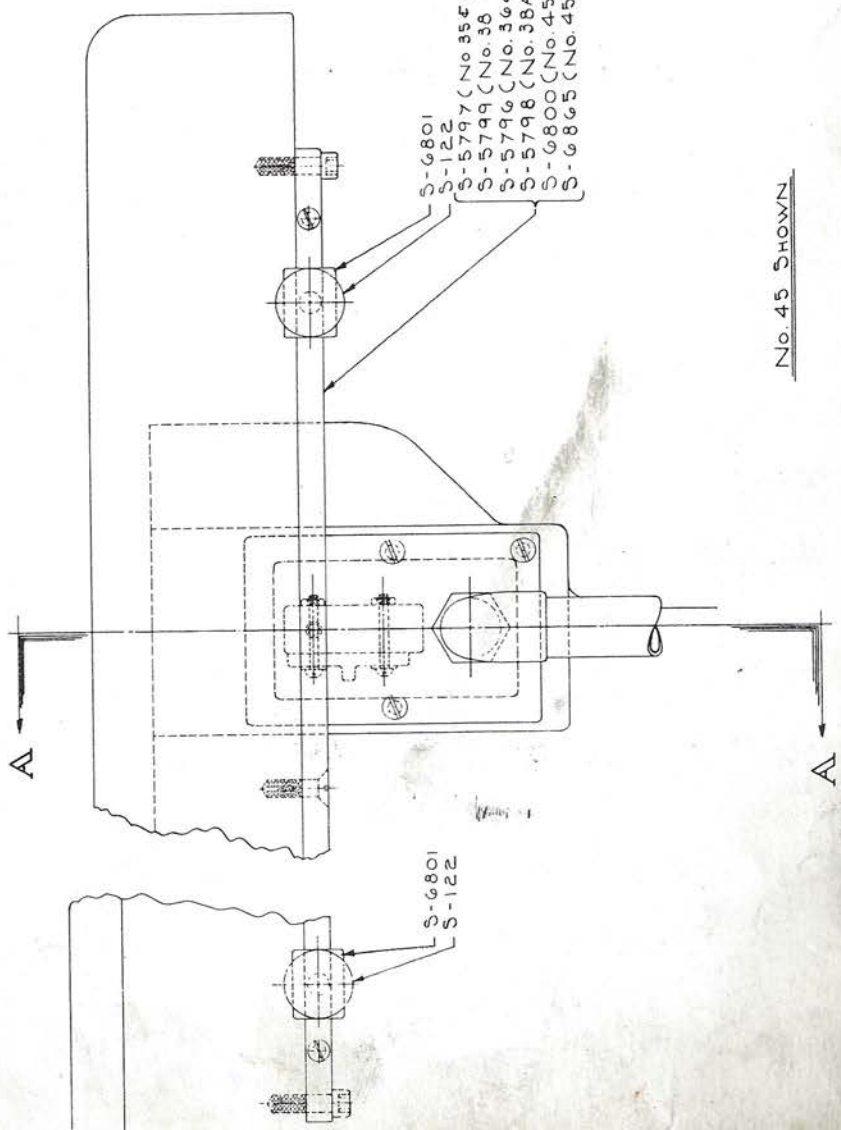
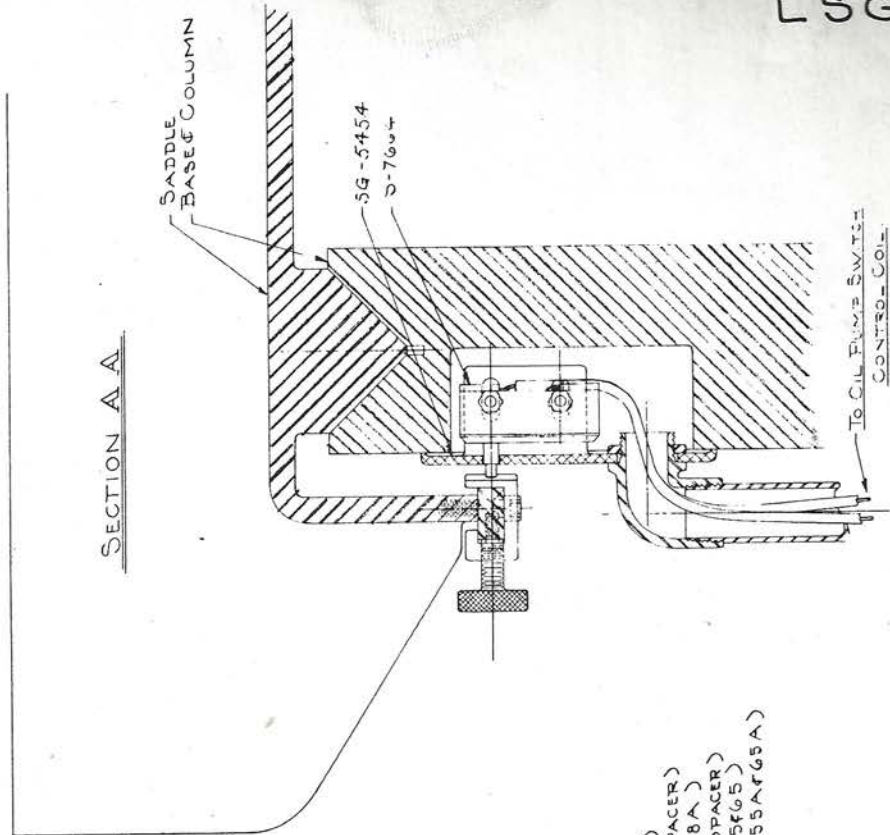
LSG-372

NO. 35 THRU 65A SURFACE GRINDERS

CROSS FEED RATCHET MECHANISM

PART NO.	PART NAME	QUANTITY
SG-41	Idler Gear Bushing	1
SG-2899	Index Plate Cover	1
SG-3706-2	Throw-In Lever	1
SG-3760	Bearing Plate	1
SG-5239	Link	1
SG-5445	Ratchet Arm	1
SG-5446	Ratchet Arm Plate	1
S-41	Washer	2
S-1430	Tee Slot Bolt	1
S-1448	Idler Gear	1
S-1449-3	48 T. Gear & Ext. Ratchet	1
S-1450	42 T. Gear & Int. Ratchet	1
S-1452-1	Idler Gear Shaft	1
S-1456	Pawl Plunger	2
S-1534	Pawl Plunger Spring	2
S-2503	Shoulder Screw	1
S-2506-1	Shoulder Bushing	1
S-2722	Engaging Rod Nut	1
S-3306	Bakelite Knob	1
S-3602	Link Large Bushing	1
S-3603	Link Small Bushing	1
S-3643	Bronze Bushing	1
S-5735	Pawl Connecting Link	1
S-5736-1	Pawl Crank Pin	2
S-5737	Ratchet Shaft	1
S-5739	Throw-In Cam	1
S-5740-1	Engaging Rod	1
S-5741	Engaging Rod Pin	1
S-5742	Lock Nut	1
S-5743-1	Engaging Rod Collar	2
S-5752	Internal Pawl	1
S-5753-1	External Pawl	1
S-5755	Throw-In Pivot	1
S-5756	Needle Bearing (Ratchet Shaft)	1
S-5757	Needle Bearing (Pawl)	4
S-5767	Connecting Link Gib	1
S-5786	Spacer Collar	1
S-5787-1	Throw-in Pin	2
S-5788-2	Index Plate	1
S-5789	Index Plate Mounting Plate	1
S-5790	Index Plate Pivot Screw	1
S-5795-1	Spring Pin	1
S-5857-1	Spring	1
S-5871	Tee Slot Bolt Nut	1
S-6967	Pivot Nut	1
S-6985	Crank Pin Washer	2
S-10002	Dowel Pins	2
S-12697	Shoulder Screw Nut	1
S-12711	Pawl Outer Arm	1
S-12712	Pawl Inner Arm	1
S-12946	Lock Pin	1
S-12947	Shaft Key	1
S-13204	Throw-In Lever Pin	1

SECTION A-A



- S-6801
- S-122
- S-5797 (No. 35F38)
- S-5799 (No. 36 SPACER)
- S-5796 (No. 36F38A)
- S-5798 (No. 38A SPACER)
- S-6800 (No. 45, 55F65)
- S-6865 (No. 45A, 55AF65A)

No. 45 SHOWN

GALLMEYER & LIVINGSTON CO.
GRAND RAPIDS, MICH., U.S.A.

No. 35 THRU 65 SURFACE GRINDER
SADDLE IN & OUT STOP
(ELECTRICAL)

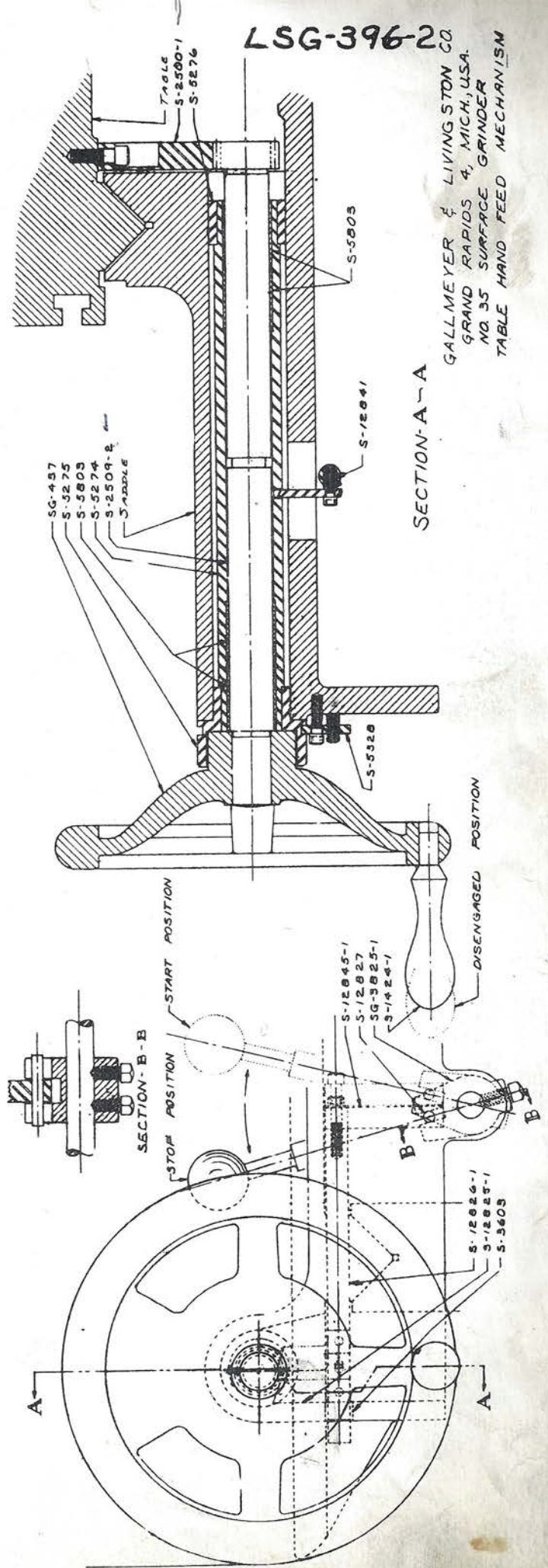
LSG-458

NO. 35 THRU 65 SURFACE GRINDER
SADDLE IN & OUT ELECTRICAL STOP

<u>PART NO.</u>	<u>PART NAME</u>	<u>QUANTITY</u>
SG-5454	Switch Plate	1
S-122	Thumb Screw	2
S-5796	Stop Dog Bar	1
S-5797	Stop Dog Bar	1
S-5798	Spacer	1
S-5799	Spacer	1
S-6800	Stop Dog Bar	2
S-6801	Stop Dog	2
S-6865	Stop Dog Bar	1
S-7664	Micro Switch	1

LSG-396-2

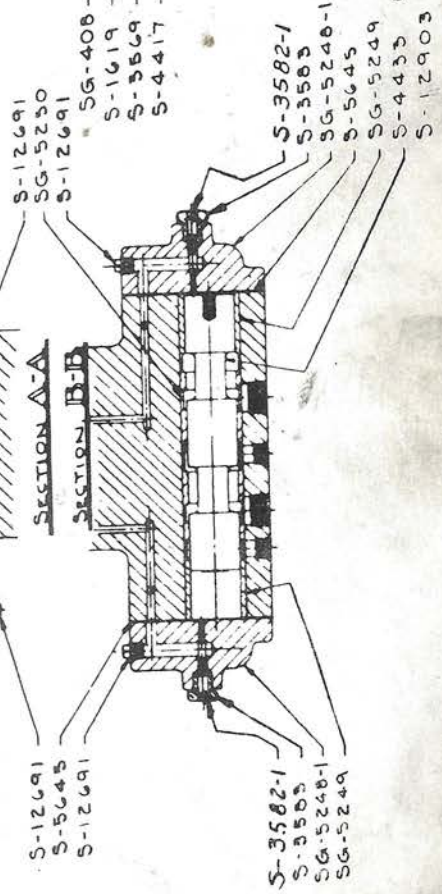
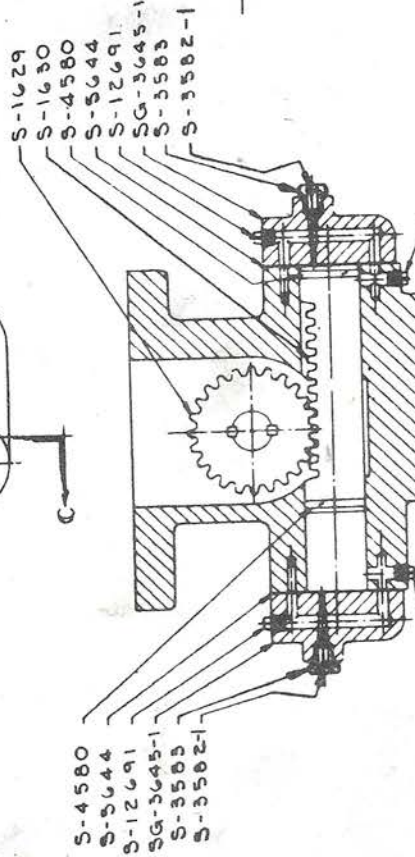
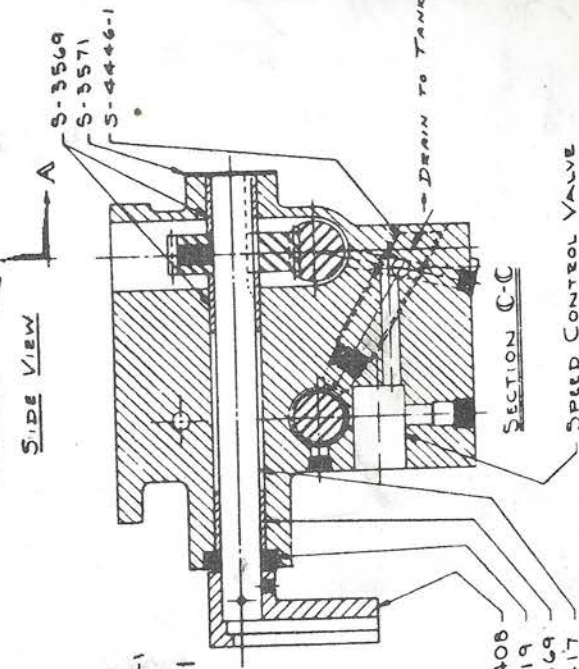
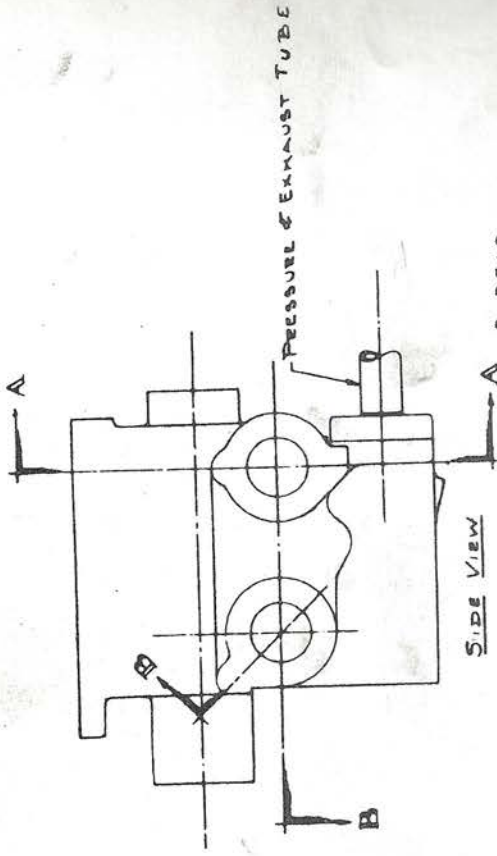
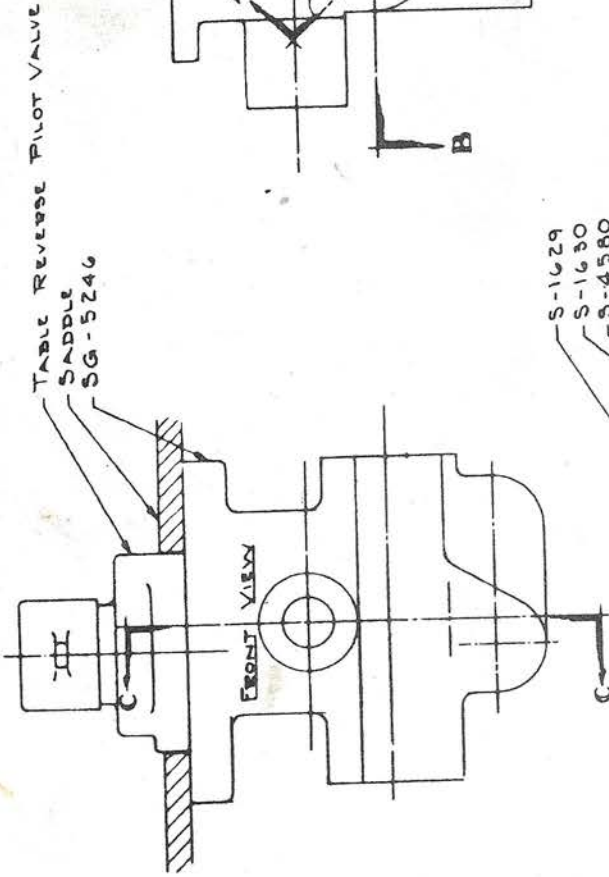
GALLMEYER & LIVINGSTON CO.
GRAND RAPIDS 4, MICH., U.S.A.
NO. 35 SURFACE GRINDER
TABLE HAND FEED MECHANISM



LSG-396-2

NO. 35 SURFACE GRINDER
TABLE HAND FEED ASSEMBLY

PART NO.	PART NAME	QUANTITY
SG-437	Handwheel	1
SG-3825-1	Stop & Start Shaft Arm	1
S-1424-1	Handwheel Handle	1
S-2500-1	Rack	1
S-2509-2	Rack Gear & Shaft	1
S-3603	Interlock Rod Bushing	1
S-5274	Quill	1
S-5275	Eccentric Collar (Front)	1
S-5276	Eccentric Collar (Rear)	1
S-5328	Quill Lock	1
S-5803	Shaft Bushing	4
S-12825-1	Interlock Rod Plate	1
S-12826-1	Interlock Rod	1
S-12827	Interlock Rod Pin	1
S-12841	Adjusting Jack	2
S-12845-1	Interlock Rod End	1



S-1629

S-1630

S-4580

S-5644

S-12691

SG-3645-1

S-3583

S-3582-1

S-12691

SG-5230

S-12691

SG-408

S-1619

S-3569

S-4417

S-4580

S-5644

S-12691

SG-3645-1

S-3583

S-3582-1

S-12691

S-5645

S-12691

S-3582-1

S-3583

SG-5248-1

SG-5249

S-3582-1

S-3583

SG-5248-1

S-5645

SG-5249

S-4433 (No 35)

S-12903 (No 45 Thru 65A)

GALLMEYER & LIVINGSTON CO.
GRAND RAPIDS 4, MICH., U.S.A.

NO. 35 THRU 65A SURFACE GRINDERS
'G' CONTROL VALVE

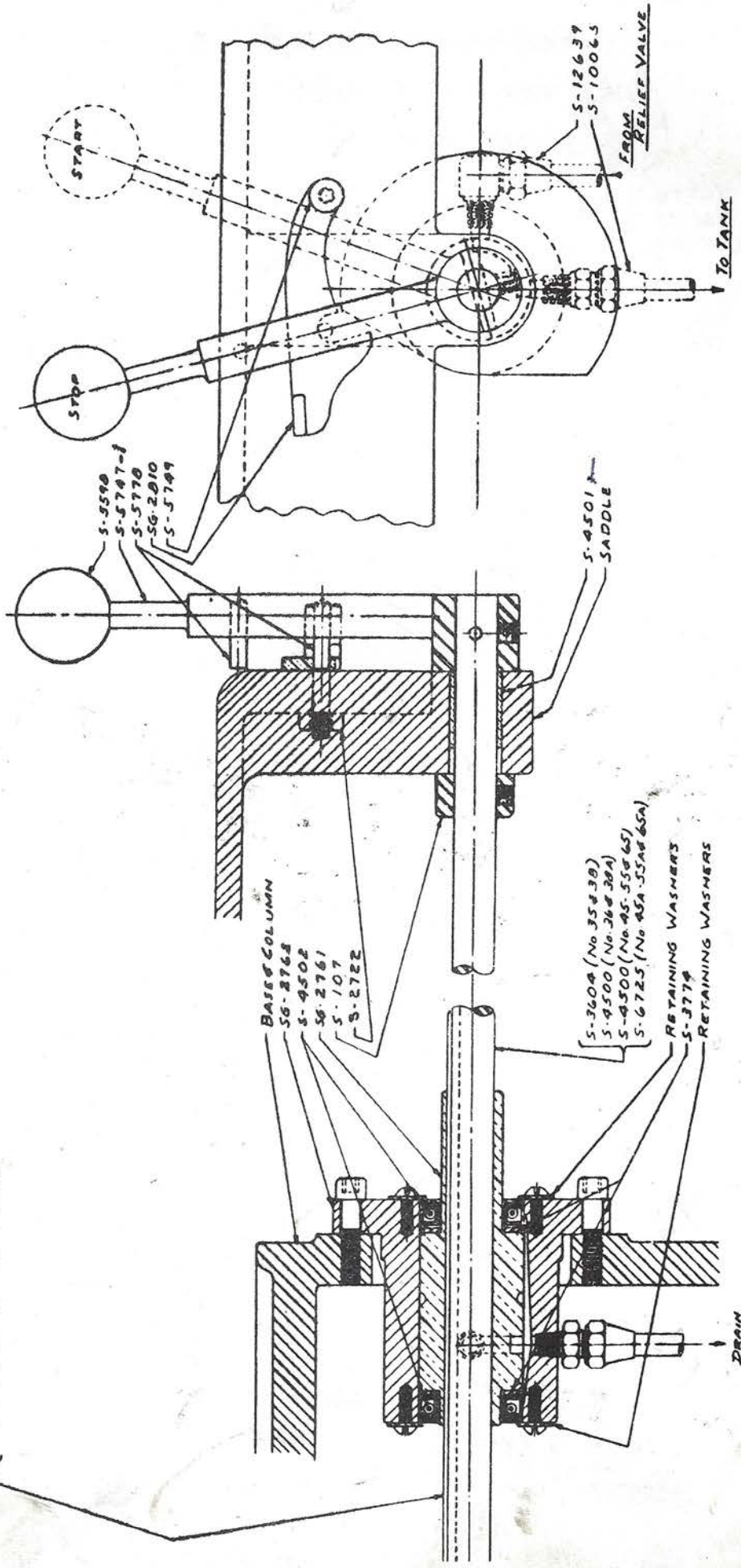
NO. 35 THRU 65A SURFACE GRINDERS

"G" CONTROL VALVE

PART NO.	PART NAME	QUANTITY
SG-408	Slotted Arm	1
SG-3645-1	Cross Feed Cylinder Head	2
SG-5246	Valve Body	1
SG-5248-1	Reverse Valve Head	2
SG-5249	End Bushings	2
SG-5250	Center Bushing	1
S-1619	Oil Seal	1
S-1629	Cross Feed Gear	1
S-1630	Cross Feed Piston	1
S-3569	Bushing	3
S-3571	Bushing Plate	1
S-3582-1	Needle Valve	4
S-3583	Packing Nut	4
S-4417	Cross Feed Gear Shaft	1
S-4433	Reverse Valve (No. 35 Thru 38A)	1
S-4446-1	Exhaust Pilot Tube	1
S-4580	Cross Feed Piston Ring	2
S-5644	Cross Feed Cylinder Head Gasket	2
S-5645	Reverse Valve Head Gasket	2
S-12691	Pipe Plug	6
S-12903	Reverse Valve (No. 45 Thru 65A)	1

LSG-292-1

5-10062 (No. 35 & 38)
 5-6968 (No. 36-38A-45-55 & 65)
 5-6969 (No. 45A-55A & 65A)



FRONT VIEW

GALLMEYER & LIVINGSTON CO.
 GRAND RAPIDS 4, MICH., U.S.A.
 NO. 35 THRU 65 A SURFACE GRINDERS
 TABLE STOP & START VALVE SECTION
 (STYLE B)

NO. 35 THRU 65A SURFACE GRINDERS

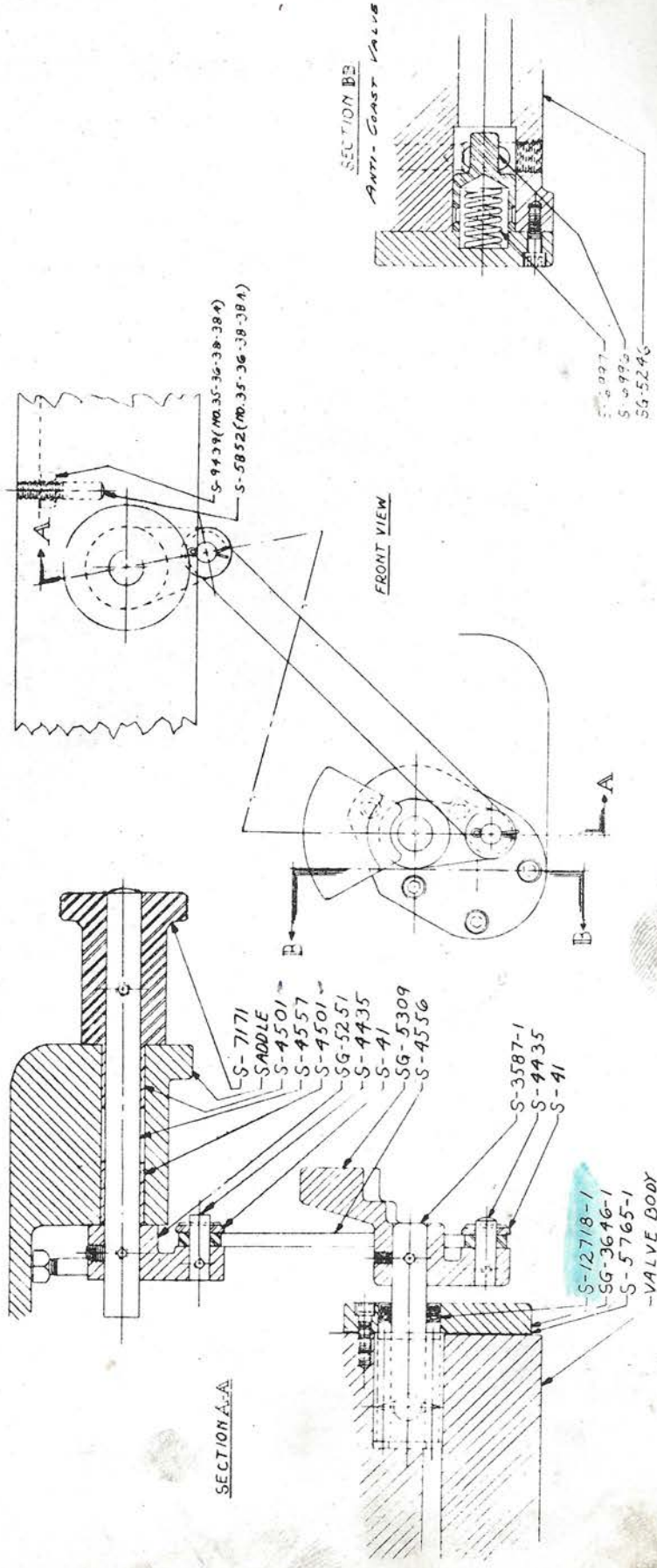
TABLE STOP & START VALVE

PART NO.	PART NAME	QUANTITY
SG-2761	Valve	1
SG-2762	Valve Body	1
SG-2810	Safety Catch	1
S-107	Shaft Collar	1
S-2722	Safety Catch Stud Nut	1
S-3604	Sliding Shaft (No. 35-38)	1
S-3774	End Plates	2
S-4500	Sliding Shaft (No. 36-38A-45-55-65)	1
S-4501	Bushing	1
S-4502	Oil Seal	2
S-5598	Bakelite Ball	1
S-5747-1	Handle	1
S-5749	Safety Catch Stud	1
S-5778	Handle Stem Pins	2
S-6725	Sliding Shaft (No. 45A-55A-65A)	1
S-6968	Sliding Shaft Key (No. 36-38A-45-55-65)	1
S-6969	Sliding Shaft Key (No. 45A-55A-65A)	1
S-10062	Sliding Shaft Key (No. 35-38)	1
S-10065	Straight Fitting	1
S-12639	Elbow Fitting	1

NO. 35 THRU 614 SURFACE GRINDERS
TABLE REVERSE PILOT VALVE & TABLE DOG ASSEMBLY

<u>PART NO.</u>	<u>PART NAME</u>	<u>QUANTITY</u>
SG-3569-4	Rotary Valve Trip Head	1
SG-5247	Rotary Valve Body	1
S-41	Washer (No. 35 Series Only)	2
S-1430	Safety Dog Tee Bolt (No. 45 Thru 614)	2
S-1534	Rotary Valve Spring Plunger Spring	1
S-1984	Rotary Valve Ball Bearing	2
S-2673-1	Right Hand Reverse Dog	1
S-2674-1	Left Hand Reverse Dog	1
S-2675-1	Reverse Dog Trigger	2
S-2676	Reverse Dog Trigger Pin	2
S-2678	Rotary Valve	1
S-2690-1	Rotary Valve Cap (No. 35 Series Only)	1
S-2695	Rotary Valve Spring Plunger	1
S-2696	Rotary Valve Spring Plunger Bushing	1
S-2699-1	Reverse Dog Clamp Screw	2
S-3519	Guard Bracket T-Bolt	2
S-3521	Rotary Valve Cap (No. 45 Thru 614)	1
S-3579-1	Rotary Valve Oil Seal	1
S-4536-1	Rotary Valve Head Dog Contact Clips	2
S-5475	Reverse Dog Clamp Screw Handle	2
S-5764	Rotary Valve Cap Gasket	1
S-5871	Tee Bolt Nut	4
S-6670-1	Rotary Valve Body Gasket	1
S-6679	Right Hand Safety Dog (No. 45 Thru 614)	1
S-6680	Left Hand Safety Dog (No. 45 Thru 614)	1
S-6681	Safety Dog Stop (No. 45 thru 614)	2
S-7033	Reverse Dog Spacer Pin	1
S-10237	Dog Clamp Nut	2
S-12869	Reverse Dog Trigger Spring	2
S-13001	Reverse Dog Trigger Spring Pin	2
S-13002	Reverse Dog Spring Pin	2
S-13221	Trip Lever Guard Bracket	2
S-13222	Trip Lever Guard (No. 65, 612, 65A & 614)	1
S-13223	Trip Lever Guard (No. 55, 512, 55A & 514)	1
S-13224	Trip Lever Guard (No. 45, 412, 45A & 414)	1
S-13225	Trip Lever Guard (No. 35)	1

GALLMEYER & LIVINGSTON CO.
GRAND RAPIDS, MICH.
NO. 35 THRU 65A. SURFACE GRINDERS
TABLE SPEED CONTROL VALVE AND
ANTI-COAST VALVE



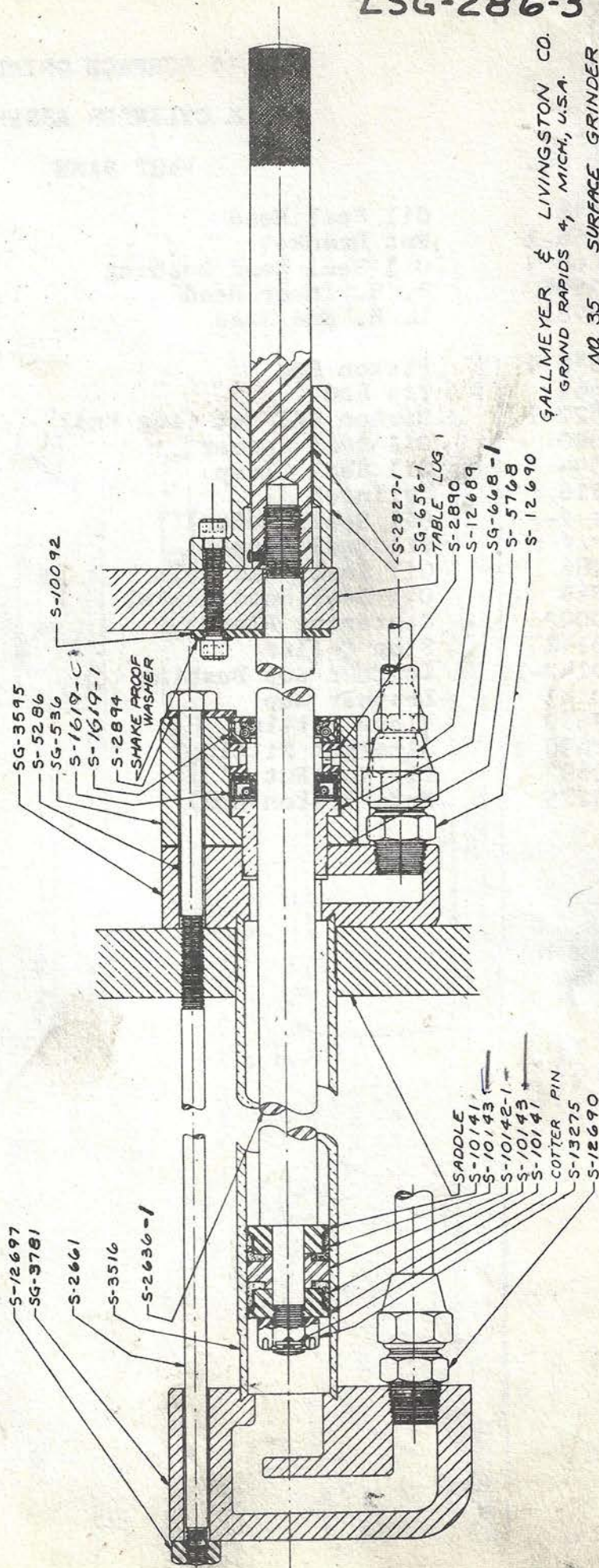
LSG-360-1

NO. 35 THRU 65A SURFACE GRINDERS

TABLE SPEED CONTROL & ANTI-COAST VALVES

<u>PART NO.</u>	<u>PART NAME</u>	<u>QUANTITY</u>
SG-3646-1	SPEED CONTROL VALVE HEAD	1
SG-5251	SPEED CONTROL VALVE LEVER	1
SG-5309	SPEED CONTROL VALVE LEVER	1
SG-5246	MAIN CONTROL VALVE BODY	1
S-41	SPEED CONTROL VALVE LINK WASHERS	2
S-3587-1	SPEED CONTROL VALVE	1
S-4435	SPEED CONTROL VALVE LINK PINS	2
S-4501	SPEED CONTROL KNOB SHAFT BUSHING	2
S-4556	SPEED CONTROL VALVE LINK	1
S-4557	SPEED CONTROL KNOB SHAFT	1
S-5765-1	SPEED CONTROL VALVE HEAD GASKET	1
S-5852	SPEED CONTROL STOP PIN	1
S-6996	ANTI-COAST VALVE	1
S-6997	ANTI-COAST VALVE SPRING	1
S-7171	SPEED CONTROL KNOB	1
S-9439	SPEED CONTROL STOP PIN NUT	1
S-12718-1	SPEED CONTROL VALVE OIL SEAL	1

LSG-286-3



GALLMEYER & LIVINGSTON CO.
GRAND RAPIDS 4, MICH., U.S.A.

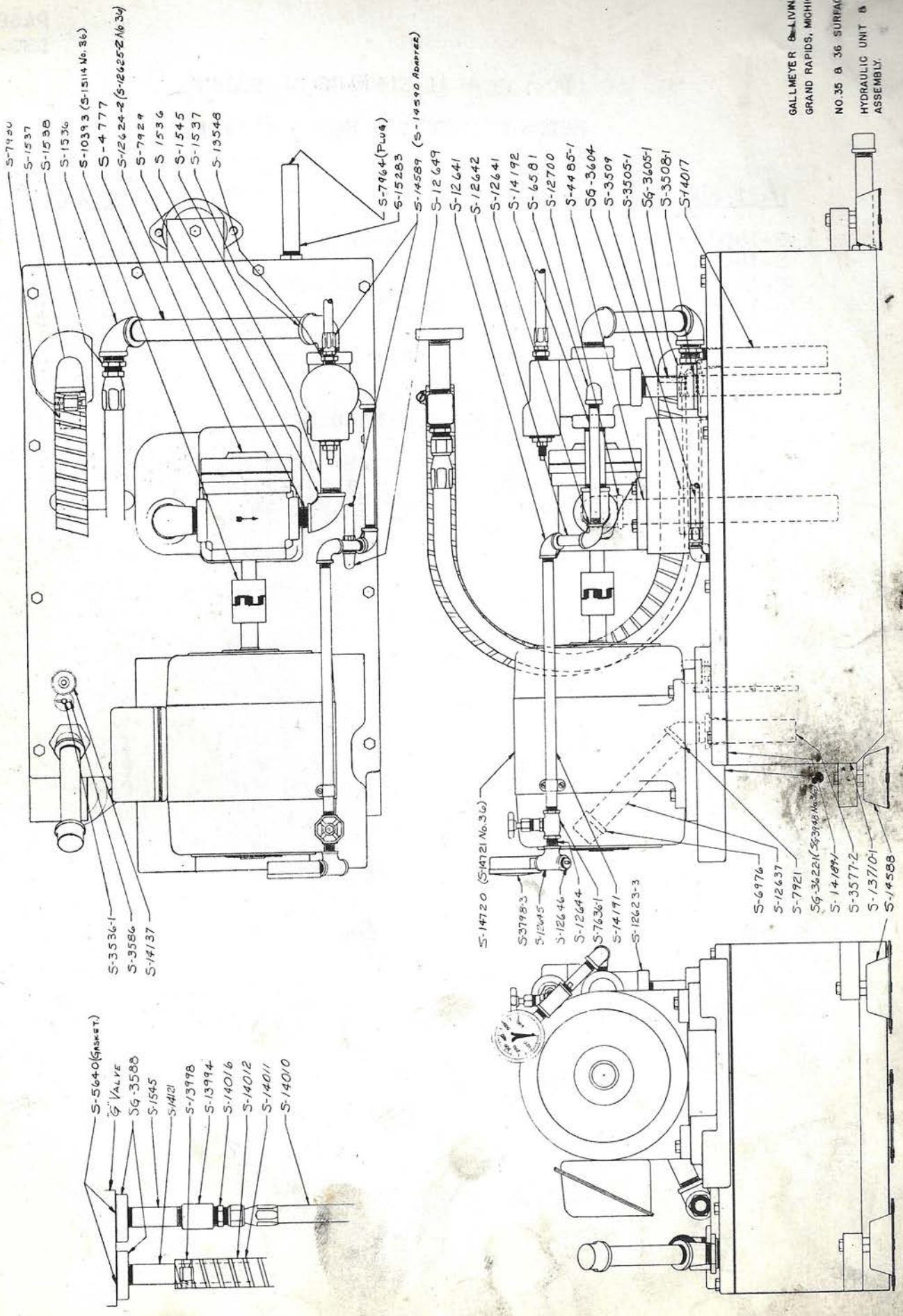
NO 35 SURFACE GRINDER
TABLE CYLINDER ASSEMBLY SECTION

LSG-286-3

NO. 35 SURFACE GRINDER
TABLE CYLINDER ASSEMBLY

PART NO.	PART NAME	QUANTITY
SG-536	Oil Seal Head	1
SG-656-1	Nut Bracket	1
SG-668-1	Oil Seal Head Bushing	1
SG-3595	R. H. Inner Head	1
SG-3781	L. H. End Head	1
S-2636-1	Piston Rod	1
S-2661	Tie Rod	4
S-2827-1	Piston Rod Nut (Lug End)	1
S-2890	Oil Seal Spacer	1
S-2894	Oil Seal Clamp	4
S-3516	Cylinder	1
S-1619-1	Oil Seal (Outer)	1
S-1619-C	Oil Seal (Inner)	1
S-5286	Oil Seal Head Bolt	4
S-5768	Oil Seal Head Gasket	1
S-10092	Centering Plate	1
S-10141	Stop Collar	2
S-10142-1	Leather Cup Bushing	1
S-10143	Leather Cup	2
S-12689	Elbow Fitting	1
S-12690	Straight Fitting	2
S-12697	Tie Rod Nut	4
S-13275	Nut (Piston End)	1

GALLMEYER & LIVINGSTON CO
GRAND RAPIDS, MICHIGAN, USA
NO. 35 B 36 SURFACE DRINKER
HYDRAULIC UNIT & HOSE
ASSEMBLY.



NO. 35 & 36 SURFACE GRINDERS
HYDRAULIC UNIT & HOSES (CON'T)

<u>PART NO.</u>	<u>PART NAME</u>	<u>QUANTITY</u>
S-14016	PRESSURE HOSE ADAPTER	1
S-14017	3/4 x 5 NIPPLE	1
S-14121	3/4 x 7 NIPPLE (1 THREAD)	1
S-14137	FILTERED BREATHER	1
S-14189-1	GASKET	1
S-14191	1/4 x 14 NIPPLE	1
S-14192	1/4 x 7 NIPPLE	1
S-14588	VIBRATION MOUNTS	3
S-14589	START & STOP VALVE HOSES	2
S-14590	HOSE ADAPTERS	2
S-14720	PUMP MOTOR (1-1/2 HP, 1200 RPM) (No. 35)	1
S-14721	PUMP MOTOR (2 HP, 1200 RPM) (No. 36)	1
S-15114	MOTOR PUMP COUPLING (No. 36)	1
S-15283	DRAIN PIPE	1

LSG-496-2

NO. 35 & 36 SURFACE GRINDERS

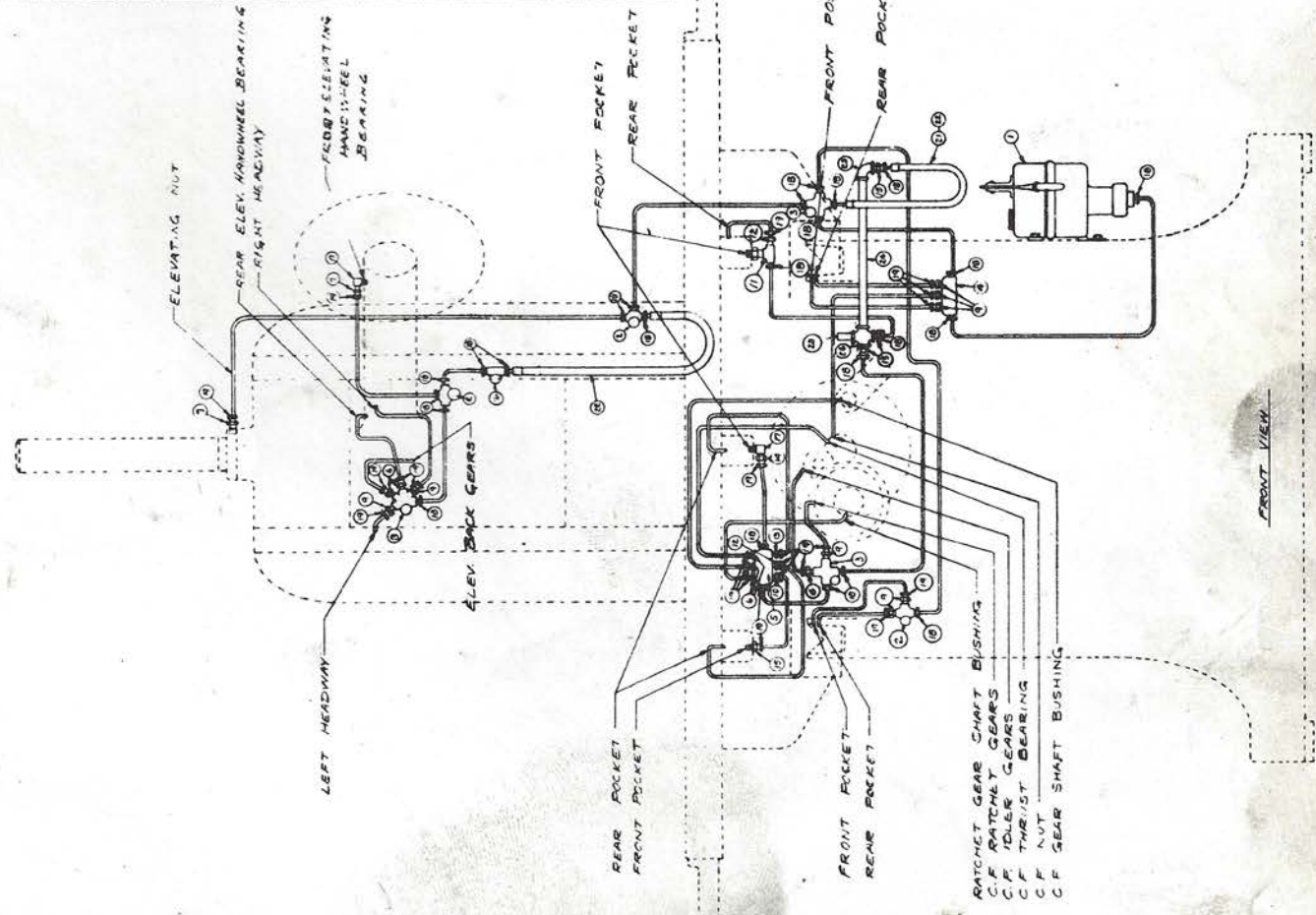
HYDRAULIC UNIT & HOSES

<u>PART NO.</u>	<u>PART NAME</u>	<u>QUANTITY</u>
SG-3588	VALVE HEAD	2
SG-3604	SUCTION PIPE COLLAR	1
SG-3605-1	R.V. EXHAUST PIPE COLLAR	1
SG-3622-1	OIL TANK COVER (No. 35)	1
SG-3948	OIL TANK COVER (No. 36)	1
S-1536	3/4 ELBOW	2
S-1537	3/4 STREET ELBOW	2
S-1538	3/4 TO 1/2 REDUCING BUSHING	1
S-1545	3/4 x 4 NIPPLE	2
S-3505-1	3/4 x 11 NIPPLE (1 THREAD)	1
S-3508-1	FELT WASHER	1
S-3509	FELT WASHER	1
S-3536-1	DEPTH GAUGE	1
S-3577-2	FILL PIPE BUSHING & SCREEN	1
S-3586	DEPTH GAUGE CROSS PIN	1
S-3798-3	PRESSURE GAUGE	1
S-4485-1	1 x 12 NIPPLE (1 THREAD)	1
S-4777	3/4 x 10-1/2 NIPPLE	1
S-5640	VALVE HEAD GASKET	2
S-6581	1/4 STREET ELBOW	1
S-6976	3/4 PIPE CAP	1
S-7636-1	1/4 GAGE VALVE	1
S-7921	3/4 x 45° STREET ELBOW	1
S-7929	3/4 CLOSE NIPPLE	1
S-7930	3/4 SHORT NIPPLE	1
S-10393	MOTOR PUMP COUPLING (No. 35)	1
S-12623-3	RELIEF VALVE	1
S-12624-2	PUMP (NO. 35)	1
S-12625-2	PUMP (NO. 36)	1
S-12637	3/4 x 7 NIPPLE	1
S-12641	1/4 ELBOW	2
S-12642	1/2 x 2-1/2 NIPPLE	1
S-12644	1/4 CLOSE NIPPLE	1
S-12645	1/4 TEE	1
S-12646	1/4 PIPE PLUG	1
S-12649	1/8 STREET ELBOW	1
S-12700	1" STREET ELBOW	1
S-13548	3/8 TO 1/8 REDUCING BUSHING	1
S-13710-1	OIL TANK	1
S-13994	3/4 COUPLING	1
S-13998	HOSE CLAMP	2
S-14010	PRESSURE HOSE	1
S-14011	EXHAUST HOSE	36"
S-14012	EXHAUST HOSE PROTECTIVE COIL	34"
S-7964	DRAIN PIPE PLUG	1

LSG-422-3

NAME OF PART	QUAN	PART NO	QCL NO
① LUBRICATOR	1	5-3772	5-3772
② JUNCTION 3 WAY JHQ	3	5-5894	5-5894
③ JUNCTION 4 WAY	1	5-4773	5-4773
④ JUNCTION 5 WAY SINGLE	2	5-5899	5-5899
⑤ JUNCTION 6 WAY DOUBLE	1	5-5899	5-5899
⑥ DRIP PLUG FUB #0	3	5-5899	5-5899
⑦ DRIP PLUG FSA #0	2	5-5899	5-5899
⑧ JUNCTION 5 WAY JHP	1	5-5899	5-5899
⑨ DRIP PLUG FUB #1	8	5-5899	5-5899
⑩ DRIP PLUG FUB #2	1	5-5899	5-5899
⑪ DRIP PLUG FTA #2	1	5-5899	5-5899
⑫ DRIP PLUG FUB #3	2	5-5899	5-5899
⑬ DRIP PLUG FUB #4	1	5-5899	5-5899
⑭ DRIP PLUG FSA #4	1	5-5899	5-5899
⑮ STRAIGHT ADAPTER	4	5-5899	5-5899
⑯ JUNCTION 2 WAY	1	5-5899	5-5899
⑰ ELBOW CONNECTOR	2	5-5899	5-5899
⑱ COMPRESSION BUSHING	24	5-5899	5-5899
⑲ COMPRESSION NUT	23	5-5899	5-5899
⑳ COMPRESSION SLEEVE	47	5-5899	5-5899
(REQUIRED AT ALL FITTINGS)			
㉑ SADDLE HOSE ASSY. (18" P.W. 35)	1	5-5899	5-5899
㉒ HOSE HOSE (24") (M. 35)	1	5-5899	5-5899
㉓ HOSE SADDLE HOSE (24") (M. 35)	2	5-5899	5-5899
㉔ FITTING STUD	1	5-5899	5-5899
㉕ 1/2" LONG 1/8" STD. PIPE (FOR M. 35)	1	5-5899	5-5899
㉖ 1/4" LONG 1/8" STD. PIPE (FOR M. 35)	1	5-5899	5-5899
㉗ 1/2" ELBOW	1	5-5899	5-5899
㉘ 1/2" CROSS	1	5-5899	5-5899
㉙ 5/8" O.D. TUBING	2	5-5899	5-5899
㉚ 5/8" O.D. TUBING CLIP	2	5-5899	5-5899

LUBRICATOR CAPACITY - 2 PINTS



GALLMEYER & LIVINGSTON CO.
GRAND RAPIDS, MICH., U.S.A.

NO. 35 & 36 SURFACE GRINDERS
BIJUR LUBRICATION SYSTEM