

REPAIR PARTS BOOK

FOR

MODEL MB & GS

DEWALT RADIAL SAW

Manufactured by

DEWALT INC.

LANCASTER, PENNSYLVANIA, U. S. A.

Subsidiary - American Machine and Foundry Co.

Order Parts from Your Nearest Authorized Distributor

Note: Be Sure to Give Model and Serial Numbers When Ordering.

Instructions for Ordering Parts

1. Always give serial number and model of your machine and complete name plate data of motor.
 - (A) Model and serial will be found on machine name plate mounted on upper portion of column or table frame.
 - (B) Motor information found on motor name plate mounted on motor.
 - (1.) **DON'T RELY ON YOUR MEMORY FOR THIS IMPORTANT DATA—CHECK THE NAME PLATE.**
2. Order only genuine DeWalt parts from your nearest dealer.
3. Be sure to give complete shipping information—Complete Firm name, Street address and City and State (County if necessary). Specify how parts are to be shipped—Freight, Express, or Parcel Post—Air, Rail, or Truck.
4. In order to expedite handling of your order, provide the following information regarding the parts ordered. Quantity of each part desired, part number, name or description of part and any other identification possible.

Instructions for Identification of Parts

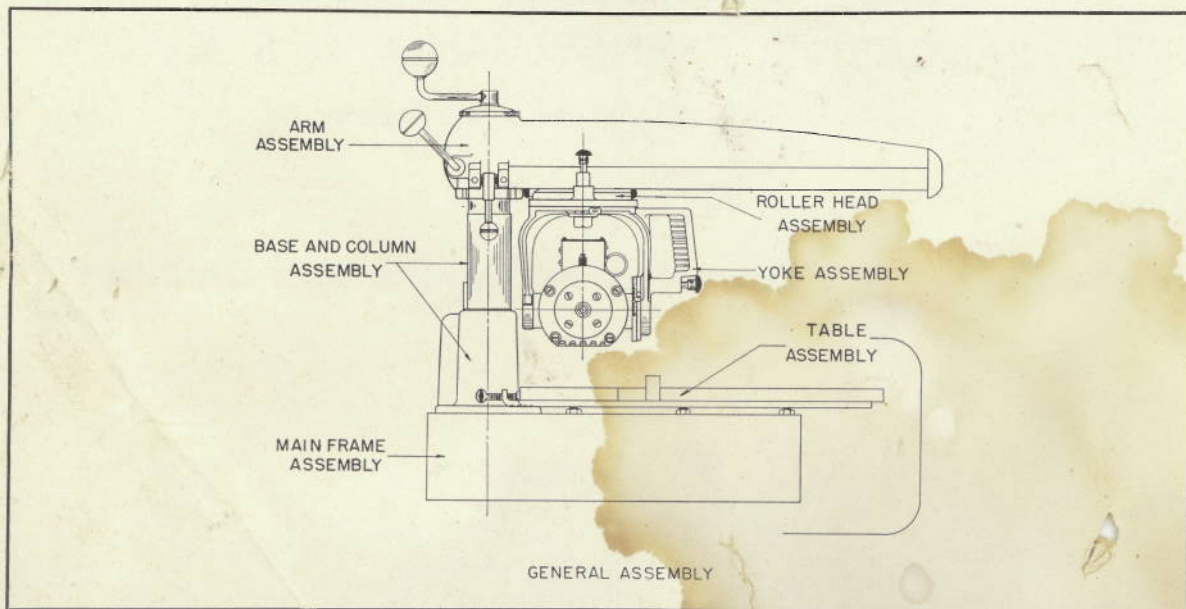
1. Identify Sub-assembly on which part is used by reference to Fig. 1 under General Assembly.
2. Refer to drawing of Sub-assembly to identify proper name of part.
3. Refer to parts list under proper Sub-assembly to identify by number.

EXAMPLE:

You desire to order replacement of all bearings for Rollerhead on Machine Model MB Serial Number 86088. Frame 156, $\frac{3}{4}$ h.p., 1 ph., 120 v., 60 cy., Motor Serial Number 256H29.

1. From General Assembly (Fig. 1) it is determined that bearings are found on Rollerhead Assembly.
2. Referring to Rollerhead Assembly (Fig. 4) it is determined the proper name of part is Bearing.
3. Referring to Parts List under Rollerhead Assembly and using Serial Number as Guide you order 4 Number 22009 Bearings.

FIGURE 1



Note: Be Sure to Give Model and Serial Numbers When Ordering

FIGURE 2

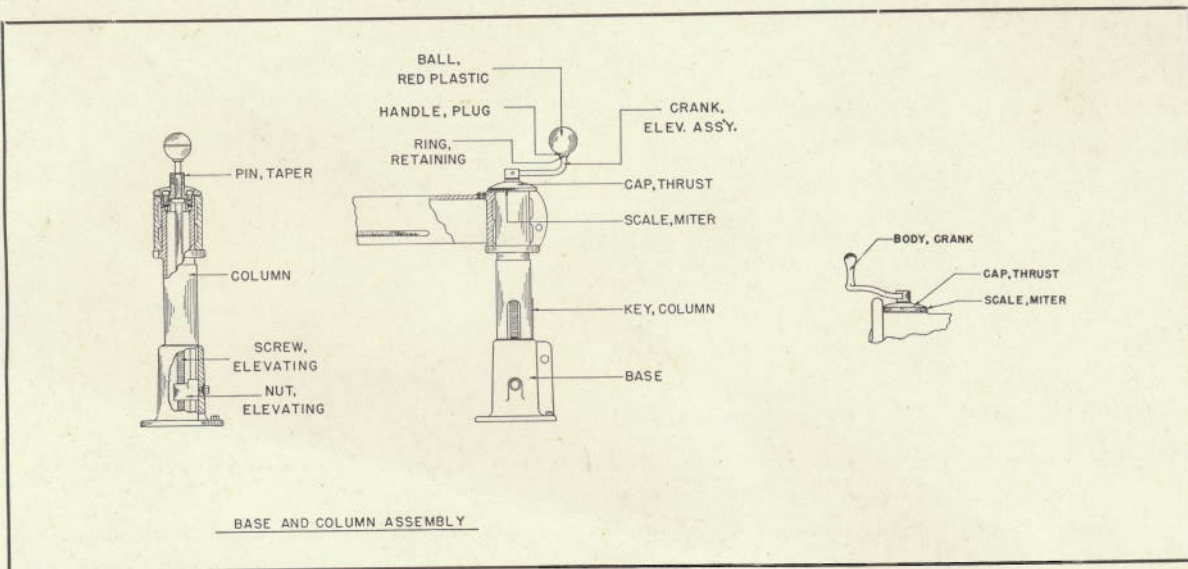


FIGURE 3

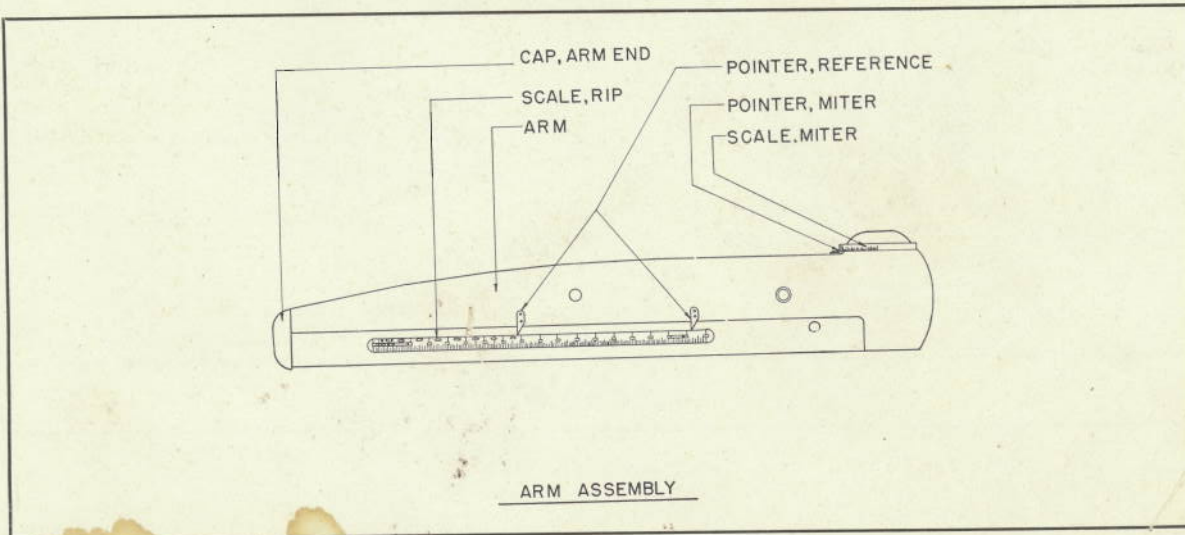
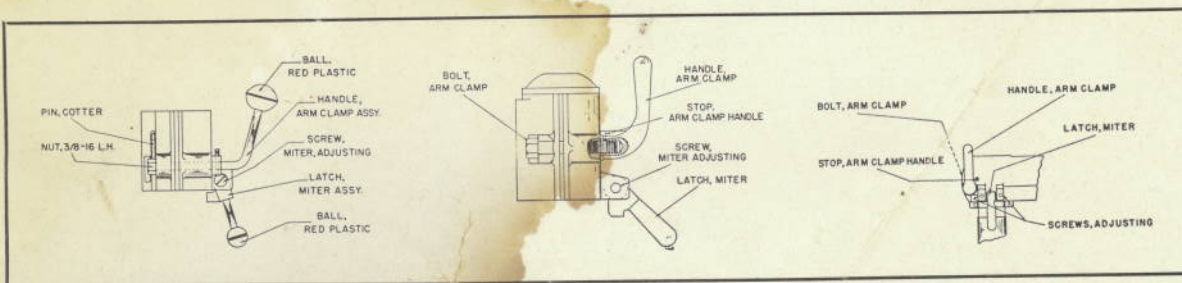


FIGURE 3A



Note: Be Sure to Give Model and Serial Numbers When Ordering

FIGURE 4

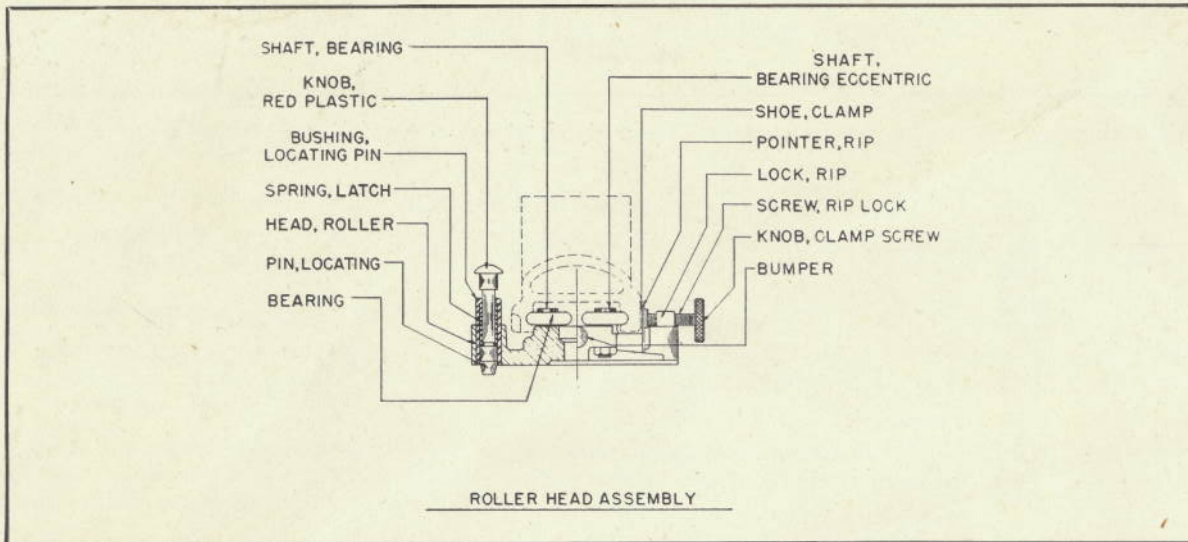


FIGURE 5

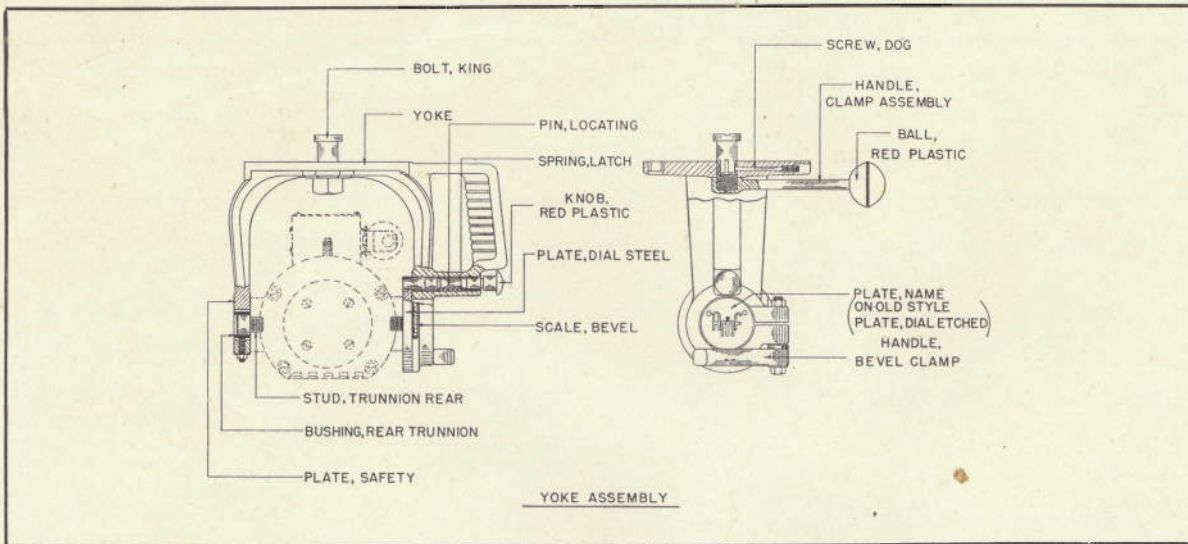
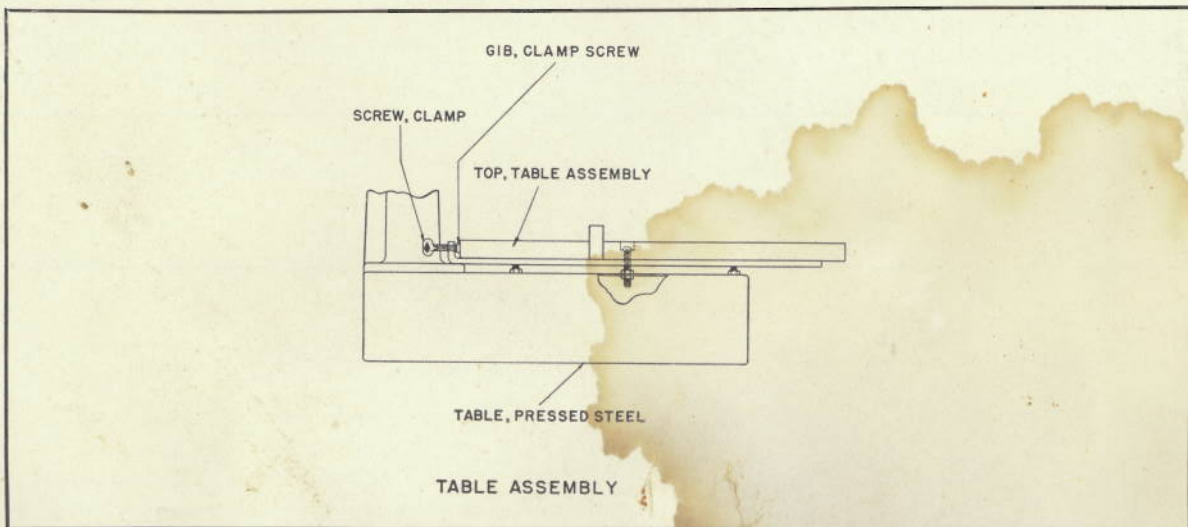


FIGURE 6



Note: Be Sure to Give Model and Serial Numbers When Ordering

MODEL MB & GS PARTS LIST

(WHEN ORDERING ALWAYS INCLUDE SERIAL NO. OF MACHINE)

PART No.	QUANTITY	NAME OF PART	USED ON MACHINE SERIAL NUMBER
BASE AND COLUMN ASSEMBLY			
100133	1	Ball, Plastic Elevating	111865 forward
100202	1	Base, Table	17817 to 46442
100201	1	Base	17817 to 75721
100219	1	Base	46442 to 75721
100228	1	Base, MMB Only	75721 to 79358
100224	1	Base, GS	75721 to 79358
119201	1	Base	79358 forward
119212	1	Base	111865 forward
100209	1	Body, Crank	17817 to 76281
100237	1	Crank, Elevating Assembly	76281 forward
100208	1	Cap, Thrust	To 33273 & 46680 to 121980
101211	1	Cap, Thrust	33273 to 46680
100242	1	Cap, Thrust	121981 to 125180
100247	1	Cap, Thrust	125180 forward
100226	1	Column	To 33273 & 46442 to 79358
100214	1	Column	33273 to 46442
119203	1	Column	79358 forward
100205	1	Gib, Column Key	17817 to 79358
119205	1	Gib, Column Key	79358 to 111865
119211	1	Gib, Column Key	111865 forward
100204	1	Key, Column	17817 to 79358
119204	1	Key, Column	79358 forward
100203	1	Nut, Elevating	17817 to 79358
119207	1	Nut, Elevating	79358 forward
39051	1	Ring, Retainer	76281 forward
100212	1	Scale, Miter	To 33273 & 46680 to 125180 & 128300 forward
101215	1	Scale, Miter	33273 to 46680
100244	1	Scale, Miter	125180 to 128300
100207	1	Screw, Elevating	17817 forward

ARM ASSEMBLY

100301	1	Arm	27007 to 33273
100321	1	Arm, Inserted Track	33273 to 46442
100318*	1	Arm	46442 to 74028
100326	1	Arm	74028 to 79358
119306†	1	Arm	79358 to 125180
119306	1	Arm	125180 forward
9022	1	Ball, Plastic	To 111865 & 111931 forward
100131	1	Ball, Plastic	111865 forward
100308	1	Bolt, Arm Clamp	To 33273 & 46442 to 65711
101308	1	Bolt, Arm Clamp	33273 to 46442
100319	1	Bolt, Arm Clamp	65711 to 111864
100526	1	Bolt, Miter Adjusting	111865 to 111931
100302	1	Cap, Arm End	To 33273 & 46442 to 65711
101311	1	Cap, Arm End	33273 to 46442
100330	1	Cap, Arm End	74028 to 121980
100339	1	Cap, Arm End	121980 forward
100304	1	Handle, Arm Clamp	To 33273 & 46442 to 111864
101305	1	Handle, Arm Clamp	33273 to 46442
100340	1	Handle, Arm Clamp Assembly	111865 forward

* 22009 Rollerhead Bearings

† Replace with GH3-26 Arm Assembly

Note: Be Sure to Give Model and Serial Numbers When Ordering

MODEL MB & GS PARTS LIST

(WHEN ORDERING ALWAYS INCLUDE SERIAL NO. OF MACHINE)

PART NO.	QUANTITY	NAME OF PART	USED ON MACHINE SERIAL NUMBER
119312	1	Latch, Miter Assembly	To 111865 & 111931 forward
100334	1	Latch, Miter	111865 to 111931
100103	1	Pointer, Miter	To 111865
100130	1	Pointer, Miter	111865 forward
119103	1	Scale, Rip	To 116583
119104	1	Scale, Rip	116583 to 125180
119105	1	Scale, Rip	125180 forward
103525	2	Screw, Miter Adjusting	To 33273 & 46442 forward
100311	2	Screw, Miter Adjusting	33273 to 46442
100307	1	Stop, Arm Clamp Handle	To 111865

On Machine Serial Numbers up to 27007 which have bevel type tracks request information from factory before ordering.

ROLLER HEAD ASSEMBLY

22009	4	Bearings	27007 to 74028
22072	4	Bearings	74028 forward
23503	2	Bumper	To 164451
23507	2	Bumper	164452 forward
101407	1	Knob, Locating Pin	To 111865
100132	1	Knob, Plastic Locating Pin	111865 forward
100403	1	Lock, Rip	27007 to 33273 & 46442 to 74028
101428	1	Lock, Rip	33273 to 46442
100424	1	Lock, Rip	74028 to 164451
119405	1	Lock, Rip	164452 forward
100406	1	Nut, Safety Latch	To 33273 & 46442 to 77322
100421	1	Nut, Safety Latch	77322 to 164451
101410	1	Nut, Safety Latch	33273 to 46442
101406	1	Pin, Locating	17817 to 77322
100420	1	Pin, Locating	77322 to 111865
100432	1	Pin, Locating	111865 forward
100408	1	Roller Head	27007 to 33273 & 46442 to 74028
101418	1	Roller Head	33273 to 46442
100413	1	Roller Head	74028 to 77322
100428	1	Roller Head	77322 to 128300
119404	1	Roller Head	128300 forward
100404	1	Screw, Clamp	17817 to 33273 & 46442 to 74028
103419	1	Screw, Clamp	33273 to 46442
100433	1	Screw, Clamp Assembly	74028 forward
101425	2	Shaft, Bearing (Concentric)	27007 to 74028
101426	2	Shaft, Bearing (Eccentric)	27007 to 74028
100417	2	Shaft, Bearing (Concentric)	74028 forward
100418	2	Shaft, Bearing (Eccentric)	74028 forward
100405	1	Shoe, Clamp	17817 to 33273 & 46442 to 74028
103408	1	Shoe, Clamp	33273 to 46442
100435	1	Shoe, Clamp	74028 forward
101422	1	Spacer, Locating Pin	17817 to 86859
119400	1	Spacer, Locating Pin	86859 to 110455
101423	1	Safety Latch	33273 to 46442

YOKE ASSEMBLY

100131	1	Ball, Plastic Yoke Handle	17817-33273 & 46442 forward
100503	1	Bolt, King	17817 to 33273
100506	1	Bolt, King	33273 to 46442

On Machine Serial Numbers up to 27007 request information from factory before ordering.

Note: Be Sure to Give Model and Serial Numbers When Ordering

MODEL MB & GS PARTS LIST

(WHEN ORDERING ALWAYS INCLUDE SERIAL NO. OF MACHINE)

PART NO.	QUANTITY	NAME OF PART	USED ON MACHINE SERIAL NUMBER
100509	1	Bolt, King	46442 forward
100112	1	Bushing, Rear Trunnion	17817 to 80894
119503	1	Bushing, Rear Trunnion	80894 to 127180
119508	1	Bushing, Rear Trunnion	127181 forward
101101	1	Button, Dial Scale	To 123580
101123	1	Button, Dial Scale	123580 to 164451
100519	1	Handle, Bevel Clamp	All
100524	1	Handle, Yoke Clamp	17817 to 33273 & 46442 forward
101508	1	Handle, Yoke Clamp	33273 to 46442
101407	1	Knob, Locating Pin	To 111865
100132	1	Knob, Locating Pin	111865 forward
101502	1	Latch, Bevel	17817 to 77322
100420	1	Pin, Locating	77322 to 111865
100432	1	Pin, Locating	111865 to 127180
119510	1	Pin, Locating	127180 forward
100125	1	Plate, Dial (Etched)	To 164451
100104	1	Plate, Dial (Steel)	17817 to 77322
100124	1	Plate, Dial (Steel)	77322 forward
119110	1	Plate, Name Dial	165803 forward
101115	1	Plate, Safety	17817 to 79358
101116	1	Plate, Safety	79358 forward
101503	1	Plug, Latch Spring	17817 to 77322
100523	1	Plug, Latch Spring	77322 forward
119111	1	Pointer, Bevel Scale	165803 forward
119507	1	Screw, Dog	127180 forward
119112	1	Scale, Bevel	165803 forward
100120	1	Stud, Rear Trunnion	17817 to 80894
119101	1	Stud, Rear Trunnion	80894 forward
100508	1	Yoke	17817 to 77322
100522	1	Yoke	77322 to 79533
119502	1	Yoke	79534 to 128300
119511	1	Yoke	79533 forward

TABLE ASSEMBLY

119900	1	Cabinet	79358 forward
119721	2	Cleats, Steel	79358 forward
100705	4	Legs, Table (All Deluxe Model)	To 79358
100764	2	Screw, Clamp	79358 forward
100435	2	Shoe, Clamp	79358 forward
100721	1	Table, Cast Iron	35704 to 79358
100750	1	Table, Pressed Steel	77322 to 79358
119813	1	Table, Pressed Steel	79359 forward
100748*	1	Top, Table Assembly	17817 to 77322
100756	1	Top, Table Assembly	77322 to 79358
119716	1	Top, Table Assembly	79358 forward
No Code (HL4A4)	1	Top, Table Assembly (MMB)	17817 to 35704
No Code (HL4A8)	1	Top, Table Assembly (MMB)	35704 to 80894

NOTE: All above Table Top Assemblies include wood, hardware, cleats, gibs and screws.

Machines up to and including 77321 to replace Table Frame substitute 100750 Frame using 100756 Table Top Assem.

* Requires special print for drilling table.

All machines after 79358 can be equipped with cabinet No. 119900.

Cannot be equipped with legs.

Note: Be Sure to Give Model and Serial Numbers When Ordering

