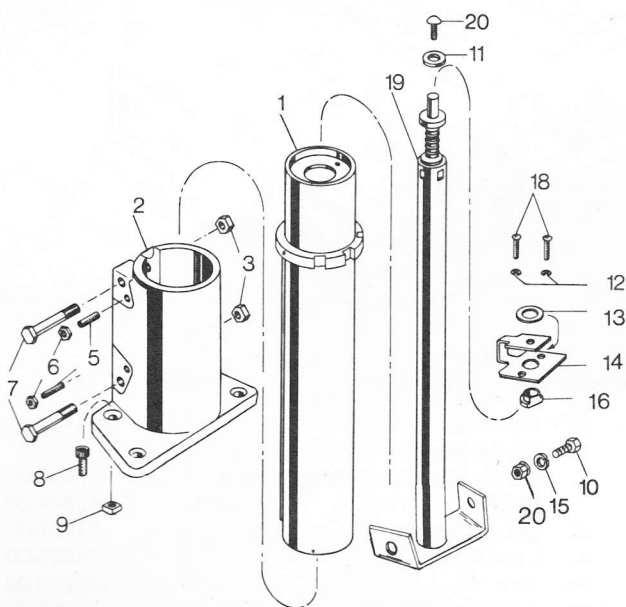




DEWALT®

Parts Bulletin

Base, Column & Elevating Screw



Identification	Description	Quantity	Part No.
1	Column	1	81232-00
2	Base	1	122206-00
3	5/16-18 Hex Nut	2	81956-00
5	1/4-20 x 1-1/8 Flat Pt. Set Screw	2	122147-00
6	1/4-20 Hex Nut	2	83944-00
7	5/16-18 x 2-1/2 Hex Hd. Screw	2	72382-00
8	3/8-16 x 1-1/4 Hex Hd. Screw	4	82105-00
9	3/8-16 Square Nut	4	80468-00
10	3/8-16 x 3/4 Hex Hd. Screw	2	82098-00
11	.005 Shim Washer .010 Shim Washer	AR AR	103564-00 100245-00
12	1/4" Lock Washer	2	99389-06
13	Washer	1	121451-00
14	U Bracket (Includes 16)	1	122769-00
15	Lock Washer	2	415-00
16	Bracket Bushing	1	81270-00
18	1/4-20 x 1 Round Hd. Screw	2	82286-00
19	Screw & Tube	1	121289-01
20	3/8-16 Hex Nut	2	81986-00

IMPORTANT!—To assure product SAFETY and RELIABILITY, repairs, maintenance and adjustment should be performed by BLACK & DECKER Service Centers or other qualified service organizations, always using BLACK & DECKER replacement parts.

WHEN ORDERING REPLACEMENT PARTS YOU MUST GIVE UNIT, TYPE AND CATALOG NUMBER AS SHOWN ON NAMEPLATE, PLUS PART NUMBER AND NAME OF PART NEEDED.

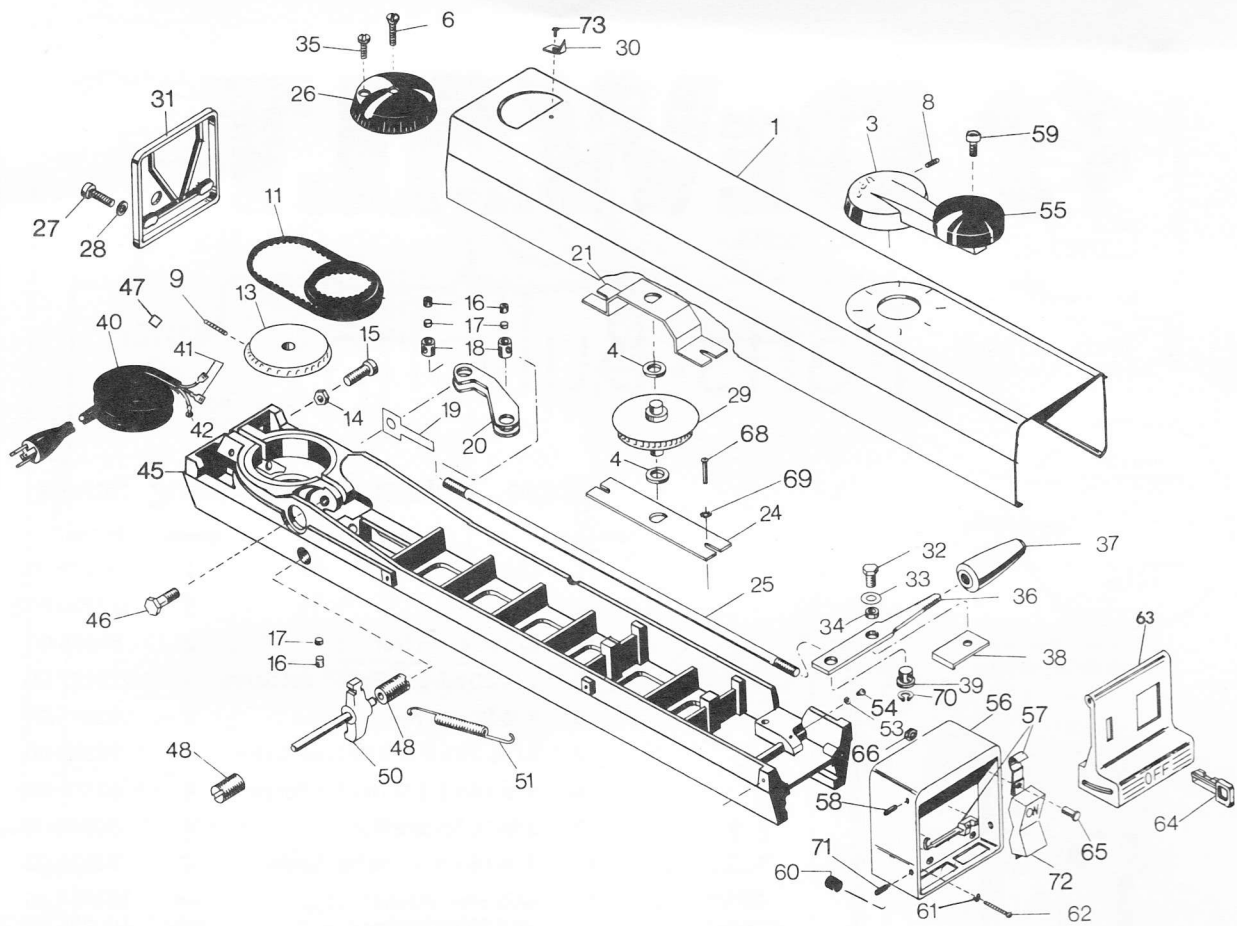
10" RADIAL ARM SAW

Model No.	Type	Volts	Cy.	Phase
7739	1	120	60 cy.	1 ph.
7739-01	1	220	50 cy.	1 ph.
7749	1	120	60 cy.	1 ph.
7749-01	1	220	50 cy.	1 ph.
7749-21	1	220	50 cy.	1 ph.

Division of Black & Decker (U.S.) Inc.
715 Fountain Avenue, Lancaster, PA 17601

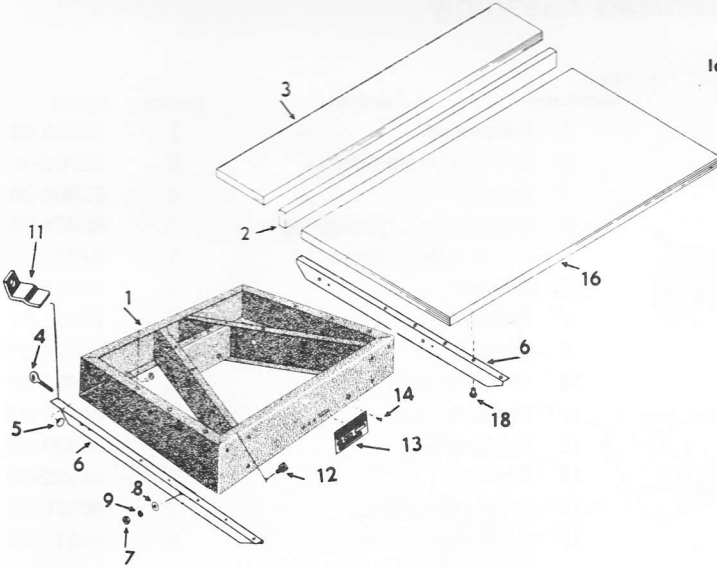
Printed in U.S.A. Bulletin No. 9649-1

This booklet is provided to aid in obtaining service parts. Operational and maintenance information is contained in a separate manual which is available through your local service outlet.



Identification	Description	Quantity	Part No.	Identification	Description	Quantity	Part No.
1	Shroud (Cat. No. 7739 Series)	1	122644-00	39	Pivot Pin	1	122189-00
	Shroud (Cat. No. 7749 Series)	1	122644-01	40	Cord & Plug (Includes 41, 42, 47)	1	122452-00
3	Elev. Arm Assembly (Includes 8, 55, 59)	1	71917-02		Cat. No. 7739-01, 7749-01, 7749-21	1	122452-00
4	Shim Washer	2	62518-00		Cat. No. 7739, 7749	1	81373-00
6	Oval Hd. Mach. Screw	1	72656-00	41	Spade Connectors	2	81771-00
8	1/4-20 x 1 Cup Pt. Set Screw	1	82398-00	42	Lead Terminal	1	34289-00
9	3/16 x 1 Roll Pin	1	82034-00	45	Arm	1	122273-00
11	Timing Belt	1	81273-00	46	3/8-16 x 2 Hex Hd. Screw	1	80165-00
13	Timing Belt Sprocket	1	121376-00	47	Insulator	1	72268-00
14	5/16-18 Hex Nut	2	80467-00	48	Miter Adj. Screw	2	83122-00
15	5/16-18 x 1-1/4 Socket Hd. Screw	2	82172-00	50	Miter Latch & Pin	1	96892-00
16	1/4-20 x 1/4 Cup Pt. Set Screw	4	82387-00	51	Miter Latch Spring	1	81266-00
17	Set Screw Slug	4	103522-00	53	#8 External Lock Washer	1	33985-00
18	Clamp Lever Pin	2	81261-00	54	#8-32 x 3/8 Pan Hd. Screw	1	80489-00
19	Wear Spring	1	81263-00	55	Handle Grip	1	71914-00
20	Arm Clamp Cam	1	86526-00	56	Front Cap (Includes 65, 66)	1	679161-00
21	Upper Bracket	1	71916-00	57	Lock & Spring (Includes 65, 66)	1	679160-00
24	Lower Bracket	1	71915-00	58	Roll Pin	2	38189-00
25	Clamp Rod	1	81260-00	59	Rivet	1	73421-00
26	Mitre Scale	1	71918-00	60	Bumper	2	121341-00
27	#10-24 x 3/4 Round Hd. Screw	2	96994-00	61	#10 External Lock Washer	2	99476-04
28	Flat Washer	2	30251-00	62	#10-24 x 1-1/2 Fill Hd. Screw	2	80826-00
29	Shaft & Sprocket	1	122218-00	63	Switch Paddle	1	122274-00
30	Pointer	1	96948-00	64	Key	1	122677-00
31	Rear Cap	1	122275-00	65	#4-40 x 1/2 Pan Hd. Screw	2	99344-08
32	5/16-18 x 5/8 Hex Hd. Screw	1	82144-00	66	#4-40 Hex Nut	2	37786-00
33	Washer	1	80457-00	68	#10-24 x 1/2 Hex Hd. Screw	2	122569-00
34	Spacer	1	81257-00	69	External Tooth Washer	2	90507-00
35	5/16-18 x 1 Pan Hd. Screw	1	99250-18	70	Retaining Ring	1	58529-00
36	Control Handle	1	81255-01	71	#8-32 x 3/8 Set Screw	2	122317-00
37	Handle Grip	1	80066-00	72	Switch (Includes 65, 66)		
38	Handle Guard	1	81258-00		(7739 Series)	1	679158-00
					(7749 Series)	1	679159-00
				73	#6-32 x 1/4 Pan Hd. Screw	1	80488-00

Table Top & Table Frame

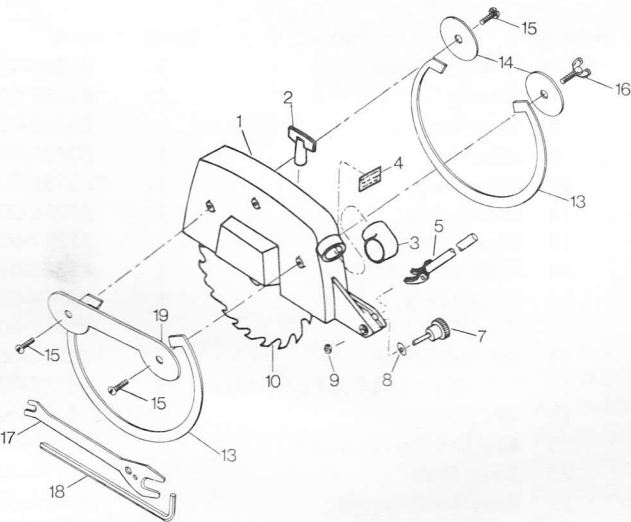


Identification	Description	Quantity	Part No.
1	Table Frame	1	122200-00
2	Guide Fence (7739 Series)	1	96615-01
	(7749 Series)	2	96615-07
3	Back Board (7739 Series)	1	96615-00
	(7749 Series)	1	96615-08
4	Thumb Screw	2	80455-00
5	Eyelet	2	80050-00
6	Cleat	2	122361-00
7	5/16-18 Hex Nut	4	99368-04
8	5/16 Flat Washer	4	99358-07
9	5/16 Lockwasher	4	99384-07
11	Bracket	2	72086-00
12	5/16-18 x 3/4 Square Hd. Screw	4	122329-00
13	Machine Name Plate	1	121788-00
14	#4 x 3/16 Drive Screw	4	12122-00
16	Fixed Table Board (7739 Series)	1	122208-01
	(7749 Series)	1	122208-00
18	Table Screws	6	201287-00

PARTS NOT SHOWN

No. 99056-03	3/32"	Hex Wrench
No. 83104-00	1/8"	Hex Wrench
No. 99056-11	1/4"	Hex Wrench

ASSEMBLY OF LOWER GUARD TO UPPER GUARD



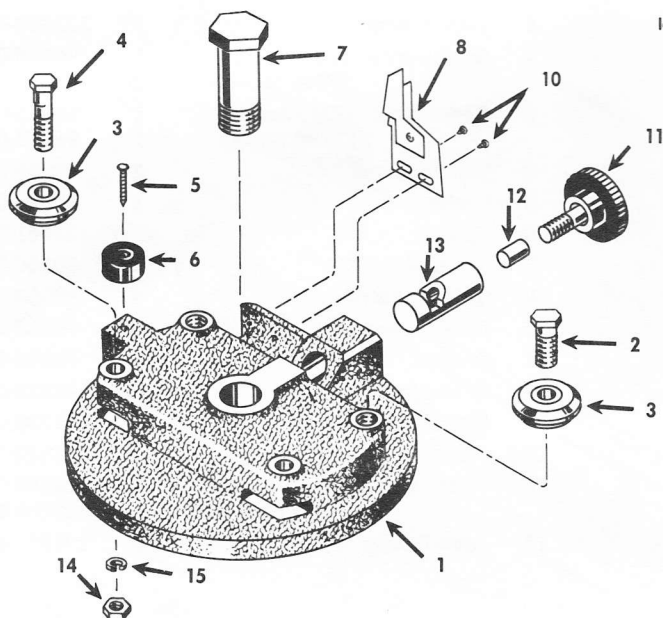
1. Hang outer ring (13) on bosses located on upper guard and mount front guard retainer (19) using two self-tapping screws (15) into pre-drilled holes on outer side of guard. Tighten screws to seat support washers.
2. Hang inner ring (13) on bosses located on guard and mount two guard retainers (14) using one self-tapping screw (15) and one thumb screw (16) on inner side of guard. Thumb screw to be used in boss nearest to kickback assembly. Tighten screw and thumb screw to seat support washers.

NOTE: It is not necessary to remove guard and blade from motor to remove or re-install the ring. To change blades remove thumb screw and washer by hand and the inner ring is easily removed. The upper guard with outer ring can be removed allowing blade to be changed.

GUARD ASSEMBLY

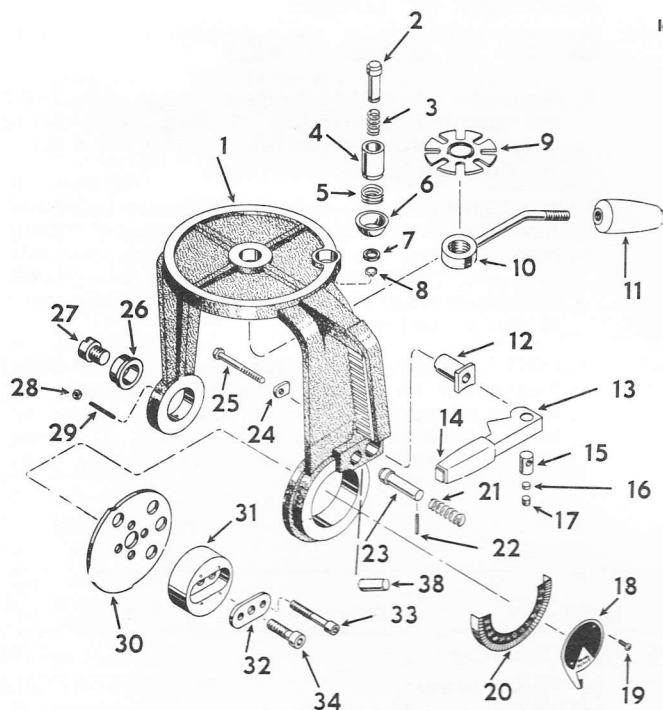
Identification	Description	Quantity	Part No.	Identification	Description	Quantity	Part No.
1	Guard (Includes 4)	1	203272-08	13	Lower Guard	2	96622-02
2	Wing Nut	1	70474-00	14	Guard Retainer	2	122341-00
3	Dust Spout	1	80466-00	15	#10-24 x 3/8 RH Self-Tap Screw	3	84638-00
4	Caution Plate	1	80126-00	16	#10-24 x 3/8 Thumb Screw	1	96692-00
5	Anti-Kickback Assembly	1	70477-02	17	Wrench	1	80137-01
7	Anti-Kickback Clamp Knob	1	80085-01	18	Allen Wrench (5/16 Hex)	1	80138-00
8	Shim Washer	1	80457-00	19	Front Guard Retainer (7739 Series)	1	122643-00
9	5/16-18 Hex Jam Nut	1	80467-00		(7749 Series)	1	122643-01
10	Saw Blade (10" Combination Chisel Tooth)(Acc.)	1	R1041				

Rollerhead Assembly

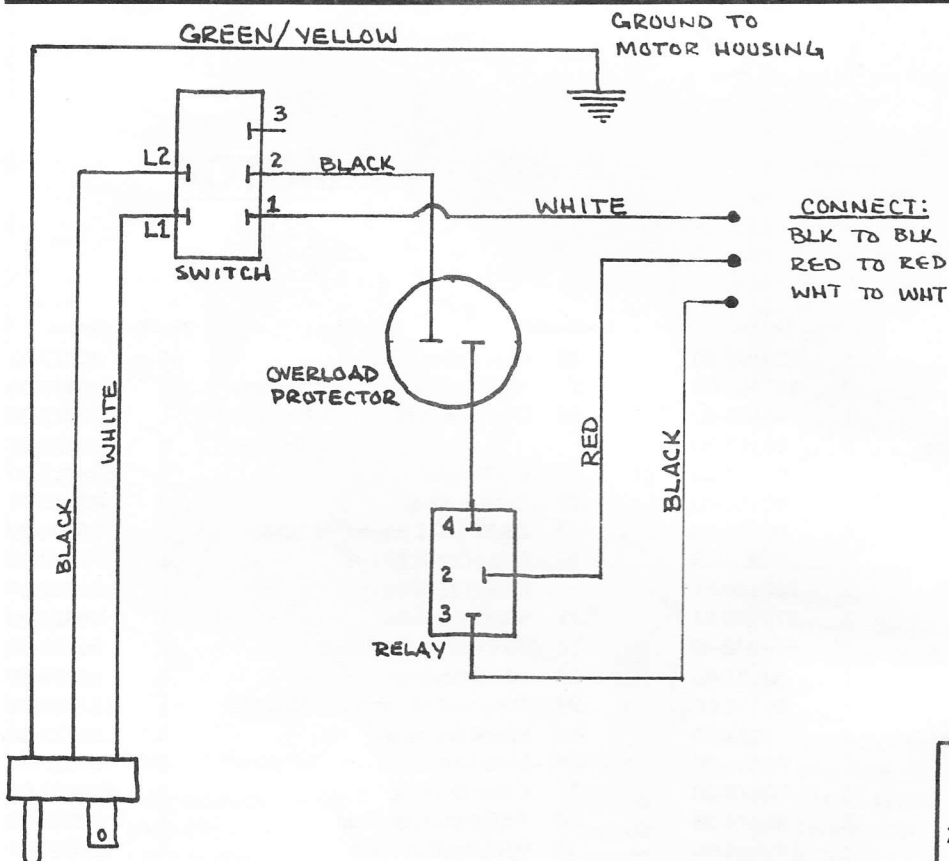
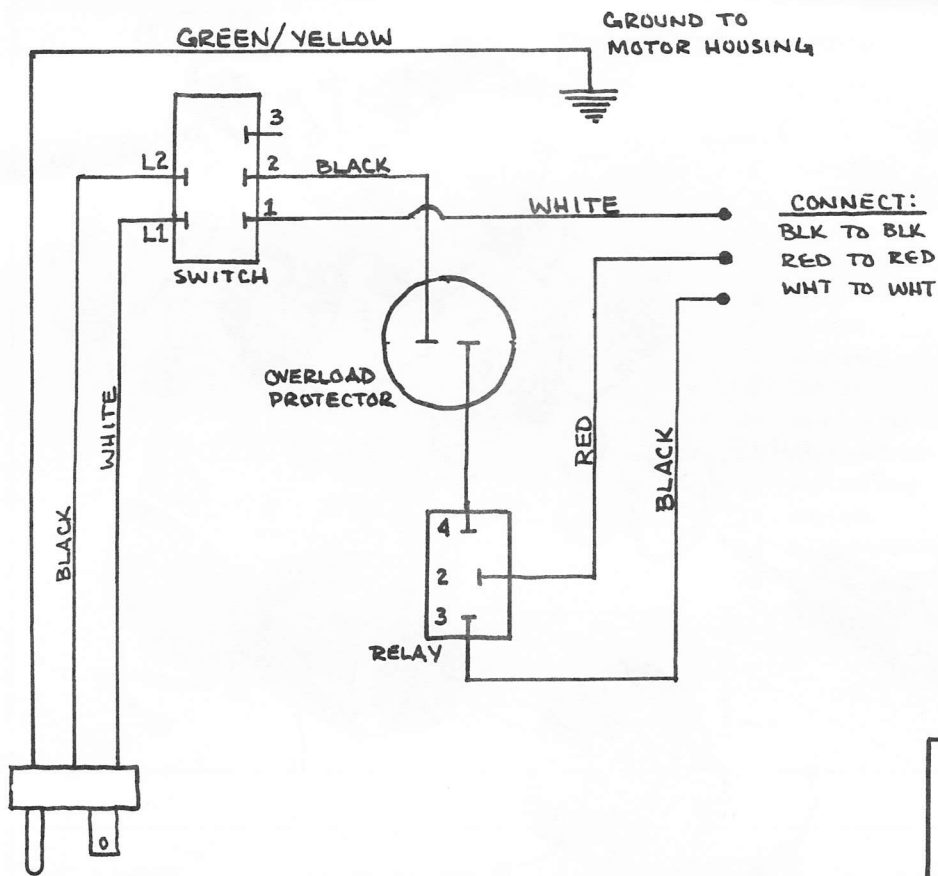


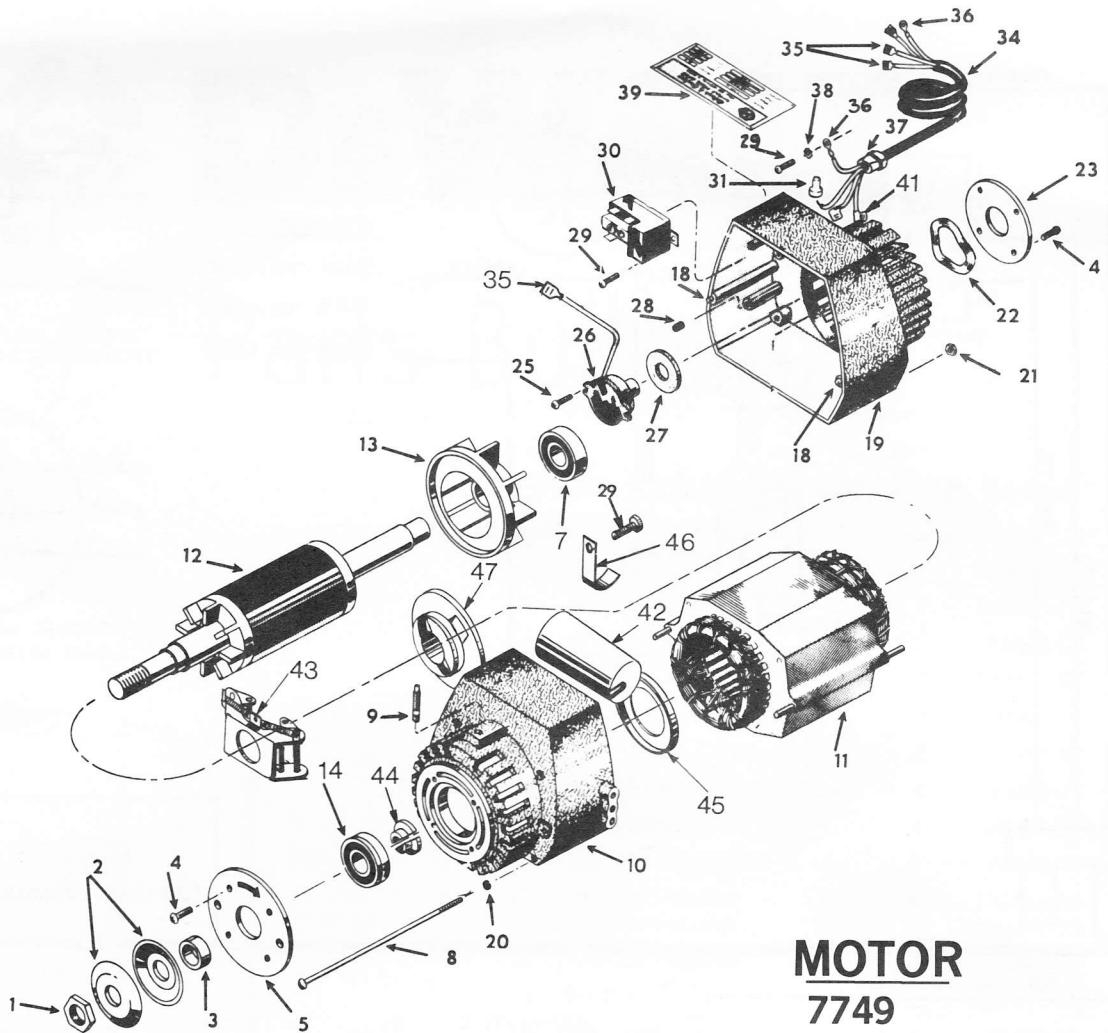
Identification	Description	Quantity	Part No.
1	Rollerhead	1	81331-02
2	3/8-16 Hex Hd. Screw	2	82102-00
3	Bearing	4	81004-00
4	Bearing Shaft (Eccentric)	2	80461-00
5	#6 x 3/8 Drive Screw	1	82229-00
6	Bumper	1	80525-00
7	King Bolt	1	70475-00
8	Pointer	1	121914-00
10	#6 x 1/4 Pan Hd. Screw	2	80488-00
11	Rip Lock Knob	1	81368-00
12	Rip Lock Slug	1	81333-00
13	Rip Lock	1	81332-00
14	5/16-24 Hex Nut	2	80470-00
15	5/16 Lock Washer	2	84319-00

Yoke Assembly



Identification	Description	Quantity	Part No.
1	Yoke (Includes 4 & 38)	1	81378-05
2	Index Pin	1	81341-00
3	Latch Spring	1	81324-00
4	Locating Bushing	1	81340-00
5	Cup Spring	1	81342-00
6	Index Cam Cup	1	81339-00
7	Washer	1	81337-00
8	Snap Ring	1	39645-00
9	Adjuster	1	80464-00
10	Yoke Clamp	1	203751-00
11	Handle Grip	1	80066-00
12	Bevel Clamp Bushing	1	71727-00
13	Bevel Clamp Handle	1	81345-01
14	Handle Grip	1	81366-01
15	Pivot Pin	1	81357-00
16	Set Screw Slug	1	103522-00
17	1/4-20 x 1-1/4 Cup Pt. Set Screw	1	82387-00
18	Medallion Pointer	1	121773-00
19	#8 x 1/4 Pan Hd. Screw	2	80487-00
20	Bevel Scale	1	121776-00
21	Bevel Latch Spring	1	80828-00
22	3/32 x 5/8 Roll Pin	1	38454-00
23	Release Pin	1	81323-00
24	Washer	1	81358-00
25	Bevel Clamp Screw	1	81208-00
26	Trunnion Bushing	1	122193-00
27	Support Screw	1	203111-00
28	#10-24 Hex Nut	3	81953-00
29	#10-24 x 1 Cup Pt. Set Screw	3	80652-00
30	Dial Plate	1	81344-00
31	Dial Plate Hub	1	81361-00
32	Hub Washer	1	80969-00
33	5/16-18 x 1-1/4 Socket Hd. Screw	2	82172-00
34	Spec. Screw	1	81014-00
38	Bushing	1	81354-00



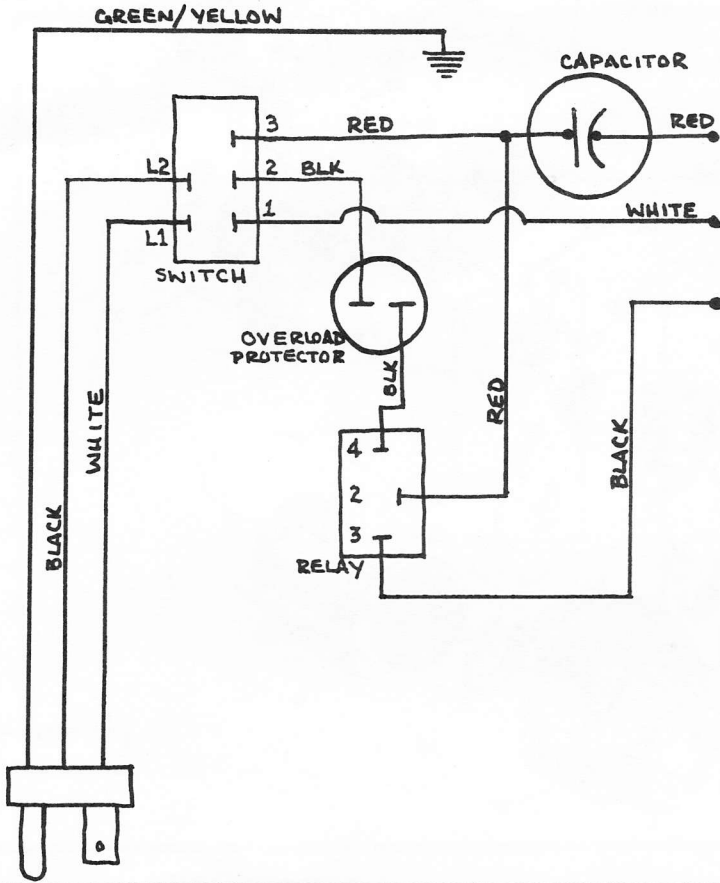


MOTOR

7749
7749-01
7749-21

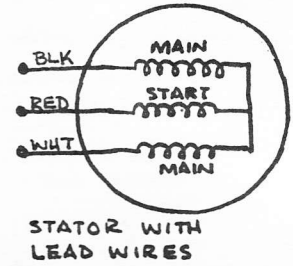
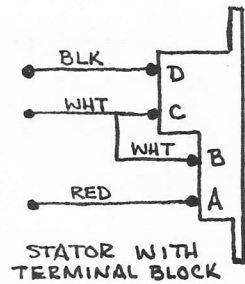
Identification	Description	Quantity	Part No.	Identification	Description	Quantity	Part No.
1	Nut (Arbor)	1	80109-00	26	Overload Protector (120v 60 cy)	1	70572-00
2	Collar (Arbor)	2	122166-00		(220v 50 cy)	1	70572-01
3	Spacer	1	80105-00	27	Felt Washer	1	545012-00
4	#10-24 x 1/2 Round Hd. Screw	8	80162-00	28	Rubber Plug	2	33055-00
5	Cover Plate	1	80104-03	29	#8-32 x 3/8 Pan Hd. Screw	4	55206-00
7	Ball Bearing	1	80110-00	30	Relay (120v 60 cy)	1	71732-00
8	Tie Rod	4	80423-00		(220v 50 cy)	1	71732-04
9	Guard Stud	1	121253-00	31	Wire Connector	1	46629-00
10	Front Motor Housing (Incl. 9)	1	122148-02	34	Motor Cable (Includes 35, 36, 41)	1	122706-00
11	Stator (120v 60 cy 1 Ph)	1	122563-51	35	Spade Connector	4	81771-00
	Stator (220v 50 cy 1 Ph)	1	122563-48	36	Lead Terminals	2	34289-00
12	Rotor	1	122422-00	37	Cable Bushing	1	445467-00
13	Fan	1	66141-00	38	#8 External Washer	1	33985-00
14	Ball Bearing	1	70055-00	39	Specification Plate	1	122030-00
18	Dowel Pin	2	80424-00	41	Lead Terminal	1	81765-00
19	Rear Motor Housing	1	122564-00	42	Capacitor	1	121631-03
20	#8 Lock Washer	4	36700-00	43	Brake Mechanism	1	122386-00
21	#8-32 Hex Nut	4	407-00	44	Bearing Support	1	122421-00
22	Load Spring	1	99082-02	45	Brake Clip	1	203356-00
23	Rear Cover Plate	1	80417-02	46	Clamp	1	500139-00
25	#8-32 x 1/2 Round Hd. Screw	2	80440-00	47	Brake Sleeve	1	545414-01

Parts Not Shown:
Connection Diagram 1 122733-00

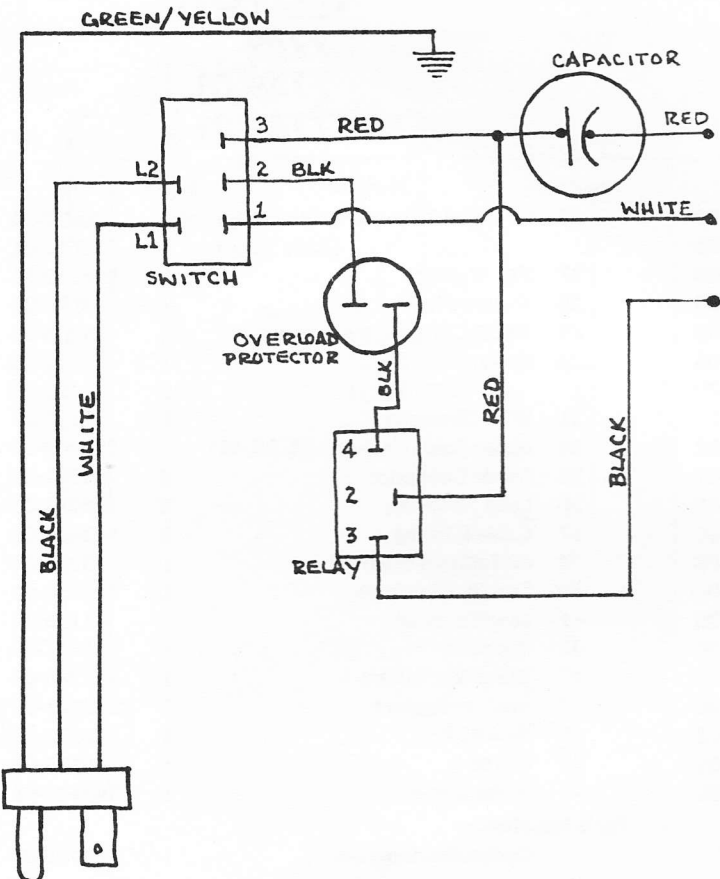


CONNECT:

BLK TO BLK
 RED TO RED
 WHT TO WHT

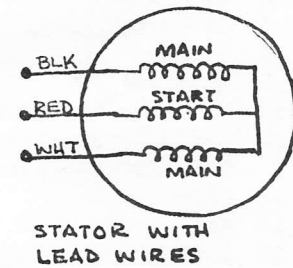
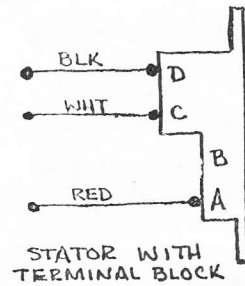


122566-00
 120 VOLT CONNECTION DIAGRAM



CONNECT:

BLK TO BLK
 RED TO RED
 WHT TO WHT



122733-00
 220 VOLT CONNECTION DIAGRAM
 4-19-83 BULL. # 3695