



REG. TRADEMARK

ROUTER

MODEL NO.
315.25070

CAUTION:

Read Rules for
Safe Operation
and Instructions
Carefully

- Introduction
- Operation
- Repair Parts



THIS SAFETY SEAL OF THE POWER TOOL INSTITUTE ASSURES YOU:



1. That the manufacturer's power tools, including the particular tool associated with the Seal, are produced in accordance with applicable Standards for Safety of Underwriters' Laboratories and American National Standards (ANSI).
2. That compliance with applicable safety standards is assured by independent inspection and testing conducted by Underwriters' Laboratories (UL).
3. That every motorized tool is inspected under power.
4. That every tool has with it adequate instructions and a list of safety rules for the protection of the user.
5. That the tool manufacturer is a member of the Power Tool Institute and is a sponsor of the Institute's Consumer Safety Education Program.

COPYRIGHT, 1969, BY POWER TOOL INSTITUTE, INC. ALL RIGHTS RESERVED

Designed exclusively for and sold only by

SEARS, ROEBUCK AND CO.—Chicago, Illinois 60607 U.S.A.
and SIMPSONS-SEARS LIMITED—Toronto



GUARANTEE

CRAFTSMAN PORTABLE ELECTRIC TOOLS ARE UNCONDITIONALLY GUARANTEED FOR ONE YEAR TO GIVE COMPLETE SATISFACTION OR RETURN FOR FREE REPLACEMENT.

THIS GUARANTEE SERVICE IS AVAILABLE BY SIMPLY RETURNING THE TOOL TO ANY SEARS STORE.

SEARS, ROEBUCK AND CO. and SIMPSONS-SEARS LTD.

introduction

Your Router is the latest development in electric wood-working tools. It has been designed to give you the finest performance in joinery and most beautiful cabinet work. This unit enables the operator to rapidly accomplish inlay work, patternwork and many other types of carving and wood-finishing.

Many exclusive features combine to make this new Router an ideal tool for professional use with precis-

ion results. Very little practice is needed to guide the router along pattern line onto the workpiece surface. By combining various types of cuts you can obtain original and distinctive effects.

The results and beauty of work that can be done in this fashion are limited only by the artistic ability and skill of the operator.

RULES FOR SAFE OPERATION



1. **KNOW YOUR POWER TOOL** — Read owner's manual carefully. Learn its applications and limitations as well as the specific potential hazards peculiar to this tool.
2. **GROUND ALL TOOLS — UNLESS DOUBLE-INSULATED.** If tool is equipped with three-prong plug, it should be plugged into a three-hole electrical receptacle. If adapter is used to accommodate two-prong receptacle, the adapter wire must be attached to a **known** ground. (Usually the screw securing the receptacle cover plate.) **Never** remove third prong.
3. **KEEP GUARDS IN PLACE** and in working order.
4. **KEEP WORK AREA CLEAN.** Cluttered areas and benches invite accidents.
5. **AVOID DANGEROUS ENVIRONMENT.** Don't use power tool in damp or wet locations. And keep work area well lit.
6. **KEEP CHILDREN AWAY.** All visitors should be kept safe distance from work area.
7. **STORE IDLE TOOLS.** When not in use, tools should be stored in dry, high or locked-up place—out of reach of children.
8. **DON'T FORCE TOOL.** It will do the job better and safer at the rate for which it was designed.
9. **USE RIGHT TOOL.** Don't force small tool or attachment to do the job of a heavy duty tool.
10. **WEAR PROPER APPAREL.** No loose clothing or jewelry to get caught in moving parts. Rubber gloves and footwear are recommended when working outdoors.
11. **USE SAFETY GLASSES** with most tools. Also face or dust mask if cutting operation is dusty.
12. **DON'T ABUSE CORD.** Never carry tool by cord or yank it to disconnect from receptacle. Keep cord from heat, oil and sharp edges.
13. **SECURE WORK.** Use clamps or a vise to hold work. It's safer than using your hand and it frees both hands to operate tool.
14. **DON'T OVERREACH.** Keep proper footing and balance at all times.
15. **MAINTAIN TOOLS WITH CARE.** Keep tools sharp at all times, and clean for best and safest performance. Follow instructions for lubricating and changing accessories.
16. **DISCONNECT TOOLS.** When not in use, before servicing; when changing attachments, blades, bits, cutters, etc.
17. **REMOVE ADJUSTING KEYS AND WRENCHES.** Form habit of checking to see that keys and adjusting wrenches are removed from tool before turning it on.
18. **AVOID ACCIDENTAL STARTING.** Don't carry plugged-in tool with finger on switch.

COPYRIGHT, 1969. BY POWER TOOL INSTITUTE, INC. ALL RIGHTS RESERVED

CUSTOMER INSTRUCTIONS

1. **DO** read thoroughly INTRODUCTION and OPERATING INSTRUCTIONS before using your ROUTER.
 2. **DO** be sure switch is in "OFF" position before connecting tool to power supply.
 3. **DO** disconnect power cord when cleaning or doing maintenance on tool.
 4. **DO** be sure the voltage of the power supply agrees with the nameplate marking on the unit.
 5. **DO** use correct size extension cord as recommended.
 6. **DO** replace both brushes when either is worn to about 1/4 inch in length.
 7. **DO** use only specified replacement parts.
 8. **DO** disconnect from power source and store in a clean dry place.
 9. **DO** check bits and cutters periodically for tightness.
 10. **DO** keep collet clean.
1. **DON'T** use your ROUTER before reading thoroughly, INTRODUCTION and OPERATING INSTRUCTIONS.
 2. **DON'T** leave Router unattended before disconnecting from power source.
 3. **DON'T** allow the cord near cutter bit when operating.
 4. **DON'T** allow children to operate Router.
 5. **DON'T** carry unit by power cord.
 6. **DON'T** force tool, allow Router to perform as it was designed.
 7. **DON'T** plug or cover air vents to keep dust from flying. Vents must be kept open to keep motor cool.
 8. **DON'T** leave the power cord connected to the power supply when installing or changing cutters.
 9. **DON'T** use dull knives or cutters since they will not produce good work and will cause overloading.

CAUTION



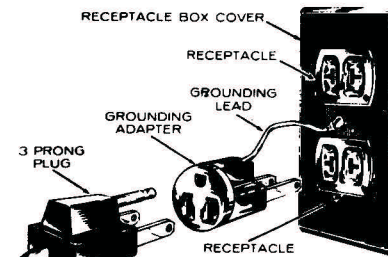
The operation of any power tool can result in foreign objects being thrown into the eyes, which can result in severe eye damage. Always wear safety glasses or eye shields before commencing power tool operation. We recommend Wide Vision Safety Mask for use over spectacles, or standard safety glasses . . . available at Sears retail or catalog stores.

WHEN ELECTRIC TOOLS ARE USED ON FIBER-GLASS boats, sports cars, etc. it has been found that they are subject to accelerated wear and possible premature failure, as the fiberglass chips and grindings are highly abrasive to bearings, brushes, commutator, etc. Consequently it is not recommended that this tool be used for continuous production work on any fiberglass material. During any use on fiberglass it is extremely important that the tool is cleaned frequently by blowing with an air jet.

THIS PRODUCT, or any electrical product, requires extreme care when service repairs are made. A dangerous electrical hazard can be created by tampering with the electrical or insulating systems or in the replacement or substitution of repair parts. Repairs should be made only by a qualified technician. If service is required we suggest you return the tool to your nearest Sears store for approved service with original factory replacement parts.

DISASSEMBLY of this tool can result in dangerous electrical hazard if any leads (wires) are pinched against metal surfaces or if grounding connection is not secure when tool is reassembled.

GROUNDING—This tool is equipped with an Underwriters' Laboratories approved 3 prong plug for your safety. If your outlet is a grounded 3-cavity type, your tool will be grounded automatically.



MAKE SURE BOX IS GROUNDED

Since many receptacle boxes in present construction will not have 3-cavity receptacles, an *adapter is packed with this tool. Make sure grounding lead is firmly

attached to a grounded receptacle box as shown above, before attempting to operate tool. Extension cords should also be 3-wire.

*(Not used in Canada)

EXTENSION CORDS—The use of any Extension cord will cause some loss of power. To keep this to a minimum and to prevent overheating and motor burn-out, use the table below to determine the MINIMUM wire size (A.W.G.) Extension Cord.

<u>Extension Cord Length</u>	<u>Wire Size A.W.G.</u>
25-100 Feet	16

operating

CHUCK—Your Router chuck is a precision collet type. **IMPORTANT—DO NOT TIGHTEN THE COLLET UNLESS A FULL SIZE 1/4 INCH SHANK BIT IS IN THE COLLET AS THIS MAY CAUSE THE COLLET TO BEND AND PREVENT THE INSERTION OF THE CUTTER SHANK INTO THE COLLET.** Clean collet, collet nut and motor shaft taper frequently to maintain accuracy.

TO INSTALL CUTTERS—IMPORTANT—BE SURE POWER CORD IS DISCONNECTED FROM POWER SUPPLY. Insert shank of cutter all the way into collet, then withdraw the shank of the cutter approximately 1/8" away from bottom. Hold lock nut, Key No. 40, (See parts list, page 7), with locking lever, Key No. 37 and tighten collet nut, Key No. 43, securely with wrench provided.

If difficulty in inserting cutter shank into collet is encountered, remove collet nut, Key No. 43, then tap end of collet, Key No. 42, lightly with a mallet or block of wood to release collet from the shaft.

When removing the cutter, it may have a tendency to bind or stick in collet. If this occurs, be sure collet nut is loose, then tap the body of the cutter lightly with a block of wood or mallet to release cutter shank from collet. Be careful not to damage cutting edges of cutter.

TO ADJUST FOR DEPTH OF CUT—IMPORTANT—BE SURE POWER CORD IS DISCONNECTED FROM POWER SUPPLY. (See Fig. 1) Place the router on a flat surface and loosen wing nut, Key No. 51. The wing nut should be finger tight when making height adjustments to insure that the motor unit operates more freely in the base. Turn height adjusting knob, Key No. 62, until tip of router bit just touches the surface. Turn indicator Knob, Key No. 50, to "0". Position router so that the bit can be projected below the base for desired setting. Now adjust to desired depth of cut by turning height adjusting knob slightly past the desired setting, then returning to the desired setting. This will insure a more accurate depth-of-cut adjustment. Tighten wing nut.

On successive cuts, always set indicator to "0" before loosening wing nut. The amount of cutter movement can then be read directly on the scale. Note that each graduation of the scale indicates 1/64 inch change in setting.

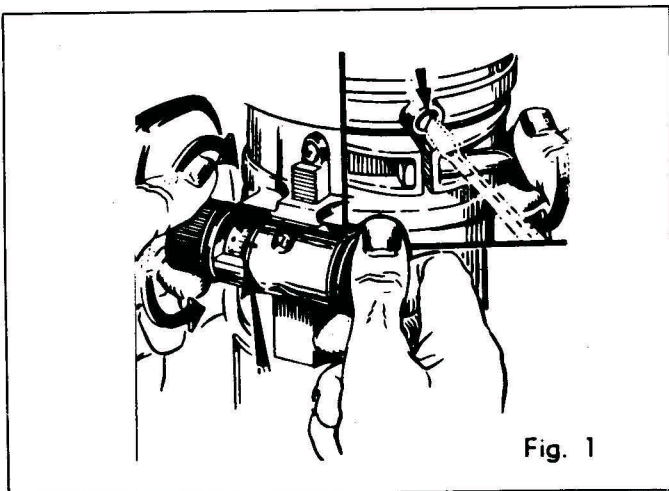


Fig. 1

An adjusting screw, Key No. 54, has been provided to assure smooth elevation of the motor. With the motor unit unclamped in base, the screw is adjusted until light pressure is applied to side of motor housing. This pressure must be sufficient to hold the motor unit in an elevated position unclamped, yet permit the motor to be elevated by the right hand elevation knob without undue force. The adjusting screw, Key No. 54, is set at the factory and should not have to be changed under normal use conditions. However, after prolonged usage normal wear of thrust button in adjusting screw may allow loosened condition. Should this occur tighten with screwdriver by turning clockwise approximately 1/4 turn or until required fit is retained.

SIZE OF CUT—The average cut should not exceed 1/4" depth per pass when using larger cutters. In hardwoods, two or three passes should be made when using the largest cutters available. Two or three passes in hardwood are more practical than risking possible damage to the motor unit or cutter breakage through overloading.

PROPER CARE OF CUTTERS—The best results for fast accurate cutting are obtained by using cutters which are sharp. A properly sharpened cutter will not only prolong the life of the router but will make the job of cutting both faster and easier.

Keep cutters clean. Avoid, if possible, running hot and smoking. Remove any accumulated pitch and gum from sides with kerosene.

Follow procedure described below for sharpening cutters. Grind only the inside of the cutting edge of cutters. When grinding cutters, it is sometimes necessary to touch up the end. Be sure when grinding end of cutters to grind the clearance angle the same as that originally furnished. Never grind the outside diameter of cutters as they are specially ground for proper clearance.

TO ASSEMBLE LIGHT ATTACHMENT TO ROUTER: Insert light bulb, Key No. 56, into light socket end of light cord, Key No. 46, with a gentle press and twist motion. The bulb required for this router is a standard 12-volt automotive bayonet base number 94 bulb, available at most auto supply stores and service stations. Insert the light socket into the light shroud, Key No. 57, so that the upper edge of the shroud fits securely between the two rings on light socket. Attach assembly to back of router base, Key No. 52, just below the wing nut, with three screws, Key No. 58. Plug light cord into socket, Key No. 6. The light will remain "on" while the router is running.

TO ASSEMBLE EYESHIELD TO ROUTER: The eyeshield, Key No. 66, attaches to the front of the router, covering the opening below the micrometer adjustment knobs. Gently squeeze the shield at each end so that the two tabs fit into the router base opening. Releasing the shield will cause it to securely grasp the edge of the base "window."

LUBRICATION

All the bearings in this tool are lubricated with a sufficient amount of high grade lubricant for the life of the unit under normal operating conditions, therefore, no further lubrication is required.

BRUSH REPLACEMENT

Periodically check the brushes for wear and replace both brushes when either is worn to about 1/4 inch in length. To check length of brushes they must be removed from tool (see instructions below). Replacement of these relatively inexpensive parts, when necessary, will keep your Router operating more efficiently and prolong the life of the motor.

Replacement of worn-out brushes is considered normal operating maintenance and is not therefore covered by guarantee.

IMPORTANT—BE SURE POWER CORD IS DISCONNECTED FROM POWER SUPPLY. To replace carbon brushes, (See Fig. 2), Key No. 10 (See parts list, page 7), unscrew brush cap, Key No. 11 and remove old brush. Replace both brushes making sure when inserting that curvature of brush matches curvature of the surface of the motor to which it is mated. Make sure brushes move freely in holder.

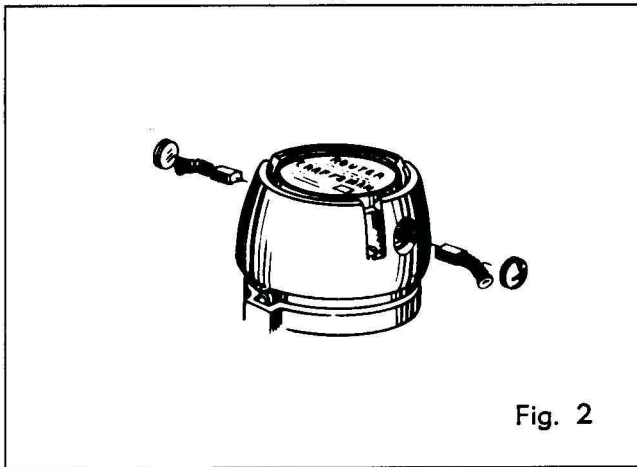
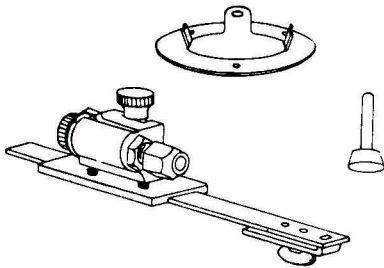
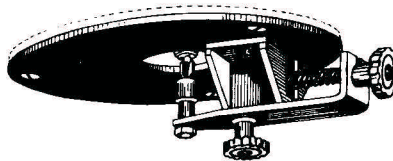


Fig. 2

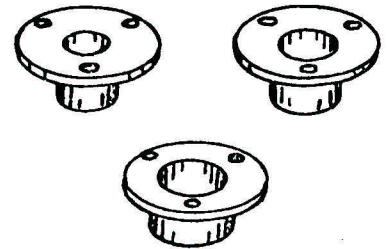
ACCESSORIES ADD GREATER VERSATILITY



Cutter Grinding Attachment



Laminate Trimmer

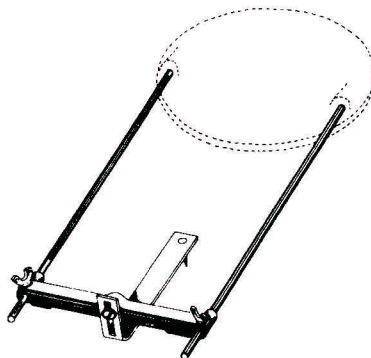


Guide Bushings

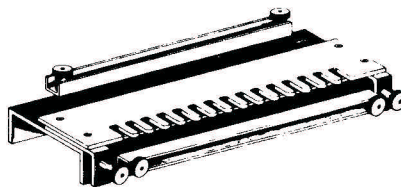


Buy Craftsman Shop Tested Accessories

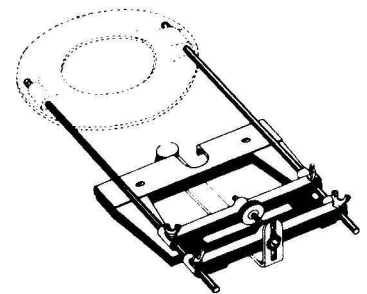
Trammel Point



Dovetail Template



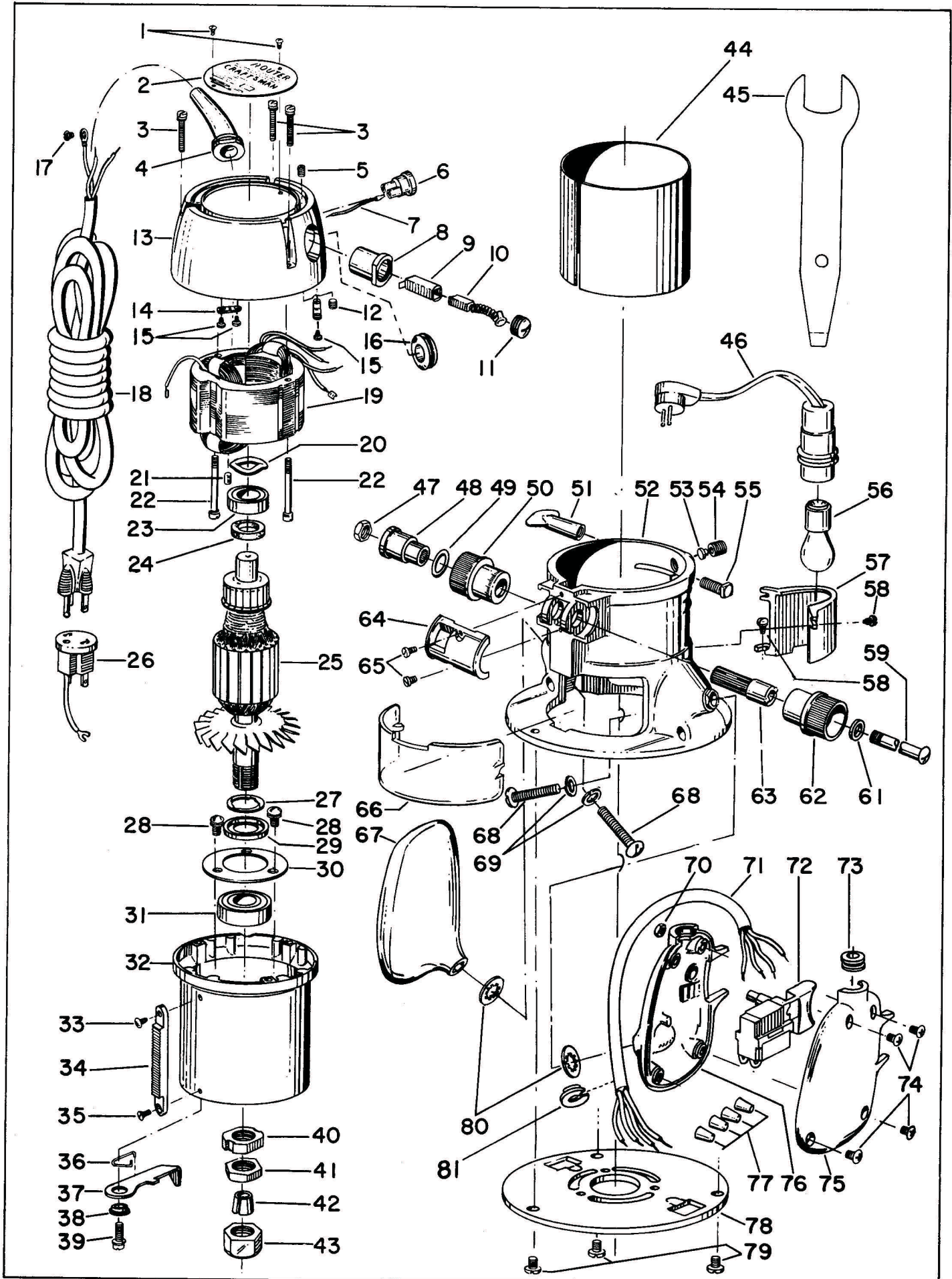
Edge Guide and Contour Finger



WHEN USING ATTACHMENTS ALWAYS WEAR SAFETY GLASSES AND FOLLOW MANUFACTURERS RECOMMENDATIONS AS TO THEIR USE

ADDITIONAL ACCESSORIES AVAILABLE — VISIT YOUR NEAREST SEARS RETAIL STORE OR CATALOG OFFICE FOR A COMPLETE SELECTION

CRAFTSMAN ROUTER—MODEL NUMBER 315.25070



FOR PARTS LIST — SEE PAGE 7

CRAFTSMAN ROUTER—MODEL NUMBER 315.25070

The Model Number will be found on a plate attached to the Housing Cover.
Always mention the Model Number in all correspondence regarding your
ROUTER or when ordering repair parts.

SEE BACK PAGE FOR PARTS ORDERING INSTRUCTIONS

PARTS LIST

Key No.	Part No.	Description	Quan.	Key No.	Part No.	Description	Quan.
1	1-795247-06	Drive Screw	2	39	1-940038-804	Screw (#8-32x5/8 Fil. Hd.)	1
2	2-623805-01	Nameplate	1	40	1-623793-01	Lock Nut	1
3	1-940038-805	Screw (#8-32x7/8 Fil. Hd.)	3	41	1-623794-02	Jam Nut	1
4	2-613651-01	Bend Relief	1	42	1-623791-01	Collet	1
5	1-930687-06	*Set Screw (#8-32x1/4 Hex Socket Headless)	2	43	1-623792-03	Collet Nut	1
6	2-623819-01	Socket Housing	1	44	2-623804-01	Housing Skirt	1
7	1-623858-01	Lead with Terminal	1	45	1-623813-03	Wrench	1
8	2-623436-01	Brush Holder	2	46	2-623809-01	Light Cord Complete	1
9	2-730373-00	Brush Tube	2	47	1-623281-02	*Lock Nut (#6-32)	1
10	2-730352-01	Brush Assembly	2	48	2-623789-01	Indicator Sleeve	1
11	1-614008-01	Brush Cap	2	49	1-623808-01	"O" Ring	1
12	1-930687-05	*Set Screw (#8-32x1/8 Hex Socket Headless)	1	50	2-623788-01	Indicator Knob	1
13	4-623775-03	Housing Cover	1	51	2-623815-02	Wing Nut — Special	1
14	1-623786-01	Cord Clamping Plate	2	52	4-623777-03	Base	1
15	1-930150-09	Screw (#6-20x3/8 Fil Hd. T.F.)	4	53	1-885868-01	Thrust Button	1
16	1-620351-00	Grommet	1	54	1-623817-02	Set Screw — Special	1
17	1-930993-01	Screw (#6-32x5/16 Pan Hd. T.C.)	1	55	1-623166-02	*Square Head Bolt (1/4-20x3/4)	1
18	2-622662-02	Cord	1	56	1-623810-01	Light Bulb (Standard Automotive Bulb #94)	1
19	3-623785-01	Field Assembly	1	57	3-623811-01	Light Shroud	1
20	1-620789-06	Loading Spring	1	58	1-620725-04	*Screw (#8-32x5/16 Rd. Hd.)	3
21	1-623019-02	Bearing Plug	1	59	1-703768-802	*Screw (#6-32x2 Rd. Hd.)	1
22	1-940038-15	Screw (#8-32x13/4 Fil. Hd.)	2	61	1-621721-03	Washer	1
23	2-620332-01	Ball Bearing (Hoover 973LOIRSL1AC2)	1	62	2-624147-01	Height Adjusting Knob	1
24	1-703429-801	Washer	1	63	2-623790-01	Height Adjusting Pinion	1
25	2-623784-01	Armature Complete	1	64	3-623806-01	Height Indicator Cover	1
26	1-706875-00	Ground Adapter (Not Supplied with Canadian Tools)	1	65	1-622931-02	Screw (#6-32x1/4 Fil. Hd.)	2
27	1-623880-01	Retaining Ring	1	66	2-623812-01	Eye Shield	1
28	1-930678-802	*Screw (#8-32x1/2 Rd. Hd.)	3	67	2-623779-01	Handle Assembly	1
29	1-623881-01	Cupped Washer	1	68	1-930517-16	*Screw (1/4-20x1 1/2 Rd. Hd.)	2
30	2-623787-02	Bearing Retainer Plate	1	69	1-703473-32	Lock Washer	2
31	1-615972-01	Ball Bearing (Hoover 993L03AC2)	1	70	1-623281-01	*Lock Nut (#8-32)	4
32	4-623776-02	Housing	1	71	2-623783-01	Power Handle Cord	1
33	1-737983-03	*Screw (#8-32x3/8 Pan Hd.)	1	72	2-614905-01	Switch	1
34	2-623807-01	Gear Rack	1	73	1-623782-01	Grommet	1
35	1-703428-14	*Screw (#8-32x7/16 Flat Hd.)	1	74	1-726693-01	Screw (#8-32x5/8 Fil. Hd.)	4
36	1-623797-01	Spring	1	75	4-623781-01	Power Handle Cover	1
37	2-623796-02	Locking Lever	1	76	4-623780-01	Power Handle	1
38	1-623795-02	Spacer	1	77	1-623173-01	Wire Connector	4
				78	3-623778-02	Sub Base	1
				79	1-623863-01	*Screw (#10-32x1/4 Pan Hd.)	3
				80	1-931555-22	Washer	2
				81	1-624136-00	Strain Relief	1
					EN-630	Instruction Sheet	

*Standard Hardware Item—May Be Purchased Locally

FOR ILLUSTRATION — SEE PAGE 6

Sears

owners manual



REG. TRADEMARK

ROUTER

**MODEL NO.
315.25070**

**HOW TO ORDER
REPAIR PARTS**

**SEARS SERVICE
IS AT YOUR SERVICE
WHEREVER YOU LIVE
OR MOVE
IN THE U.S.A.**

The Model Number will be found on the plate attached to the housing cover. Always mention the Model Number when requesting service or repair parts for your Router.

All parts listed herein may be ordered through SEARS, ROEBUCK AND CO. and SIMPSONS-SEARS LIMITED. When ordering parts by mail, selling prices will be furnished on request or parts will be shipped at prevailing prices and you will be billed accordingly.

WHEN ORDERING REPAIR PARTS, ALWAYS GIVE THE FOLLOWING INFORMATION AS SHOWN IN THIS LIST.

1. The PART NUMBER
2. The PART DESCRIPTION
3. The MODEL NUMBER—315.25070
4. The NAME of ITEM—ROUTER

All fine tools, on occasion, may require service or the replacement of parts due to wear from normal use. To prolong the life of your tool when repairs are needed, call on your nearest Sears Catalog Order or Retail Store. Please do not risk possible electrical hazards, additional cost or damage to the tool through inexperienced repairs.

Your Sears merchandise takes on added value when you discover that Sears has over 2,000 Service Units throughout the country. Each is staffed by Sears — trained, professional technicians using Sears approved parts and methods.

SEARS, ROEBUCK AND CO.—Chicago, Illinois 60607 U.S.A.
and SIMPSONS-SEARS LIMITED—Toronto