

**Sears**

**owners  
manual**

**MODEL NO.  
756.18850**

**CAUTION:**  
Read Rules for  
Safe Operation  
and Instructions  
Carefully



**Sears CRAFTSMAN®**

# AIR HAMMER

- Assembly
- Operating
- Repair Parts

Sold by SEARS, ROEBUCK AND CO., Chicago, IL 60684 U. S. A.  
and SIMPSONS-SEARS LIMITED, Toronto, Ontario, Canada

# craftsman quality PNEUMATIC TOOL

## FULL ONE YEAR WARRANTY ON CRAFTSMAN PNEUMATIC TOOLS

If this Craftsman Pneumatic tool fails due to a defect in material or workmanship within one year from the date of purchase, Sears will repair it free of charge.

Warranty service is available by simply returning the tool to the nearest Sears store or Service Center throughout the United States.

This warranty gives you specific legal rights and you may also have other rights which vary from state to state.

SEARS, ROEBUCK AND CO.  
BSC 41-3  
SEARS TOWER  
CHICAGO, IL 60684

## LUBRICATION

Daily before using and at the end of each shift, pour a liberal quantity of gum solvent oil into the air inlet. Connect tool to air line and WITH A CHISEL IN THE TOOL AND THE CHISEL AGAINST A FIRM SUPPORT, operate tool to allow oil to be carried to interior and to flush accumulations of gum and dirt out the exhaust.

Before storing tool, lubricate liberally as described above in order to coat valve and cylinder with oil and to help prevent rust and corrosion.

## AIR SUPPLY

Use of a one horsepower, or larger, air compressor with a 4½ CFM delivery at 100 psi, connected to an air tank of at least 40 gallons capacity is recommended.

Pipe and pipe fittings between the compressor and hose outlets should be ½" pipe size (⅝" I.D.) or larger. Be sure there are no dips or sags where moisture can collect and restrict air flow.

Air hose should be at least ¾" I.D. When two or more lengths of hose are connected together, all except the short leader hose should be ½" I.D.

Do not connect couplers directly to the air inlet. They increase the overall bulk of the tool, put an unnecessary strain on the tool inlet threads and deteriorate rapidly due to vibration.

The use of air filters and line lubricators is recommended.

**IMPORTANT:** For maximum efficiency, this Air-Tool should be operated with a minimum of 100 psi of clean, dry air while running free.

**CAUTION:** Never use higher air pressures to increase the output of the Air-Tool. Overloading will drastically shorten the life of all internal parts.

## LOSS OF POWER OR ERRATIC ACTION

Factors outside the tool may cause loss of power or erratic action. Reduced compressor output, excessive drain on the air

line, moisture or restrictions in air pipes or the use of hose or connections of improper size or poor condition may reduce air supply. Grit or gum deposits in the tool may cut power and may be corrected by flushing out the tool with Allstate Upper Valve Lube or Craftsman 9-55941 Light Machine Oil

If outside conditions are in order, disassemble tool, replace worn or damaged parts, clean, reassemble and relubricate.

## OPERATION

Before starting work, drain water out of air tank and blow condensation from the air line. Blow down compressor more frequently in hot, humid weather.

After clearing compressor and lubricating tool, connect to air hose, press against tail end of retainer, insert chisel into cylinder and release retainer.

**SAFETY CAUTION:** The chisel retainers (17) are not designed for complete safety against accidental release of cutters or hammers. To avoid injury, the trigger must never be depressed unless the chisel is held firmly against the work piece. When tool is not in actual use, the chisel must be removed. During operation, safety goggles should always be used to guard against flying rust and chips. When using tool, regulate the speed so that the chisel is not being driven out of the cylinder. If piston is allowed to strike the cylinder wall, internal damage will result.

Operate cold chisels at fast speeds unless used on light work. Grind cutting edge to split nuts, shear rivets, break or trim welds or for similar jobs.

Operate panel cutters at slight angle, with tool handle parallel to the work surface, on jobs such as removing rocker panels, rear quarter panels, turret tops, etc.

Keep all chisels and cutters sharpened for best tool performance.

## DISASSEMBLY AND ASSEMBLY

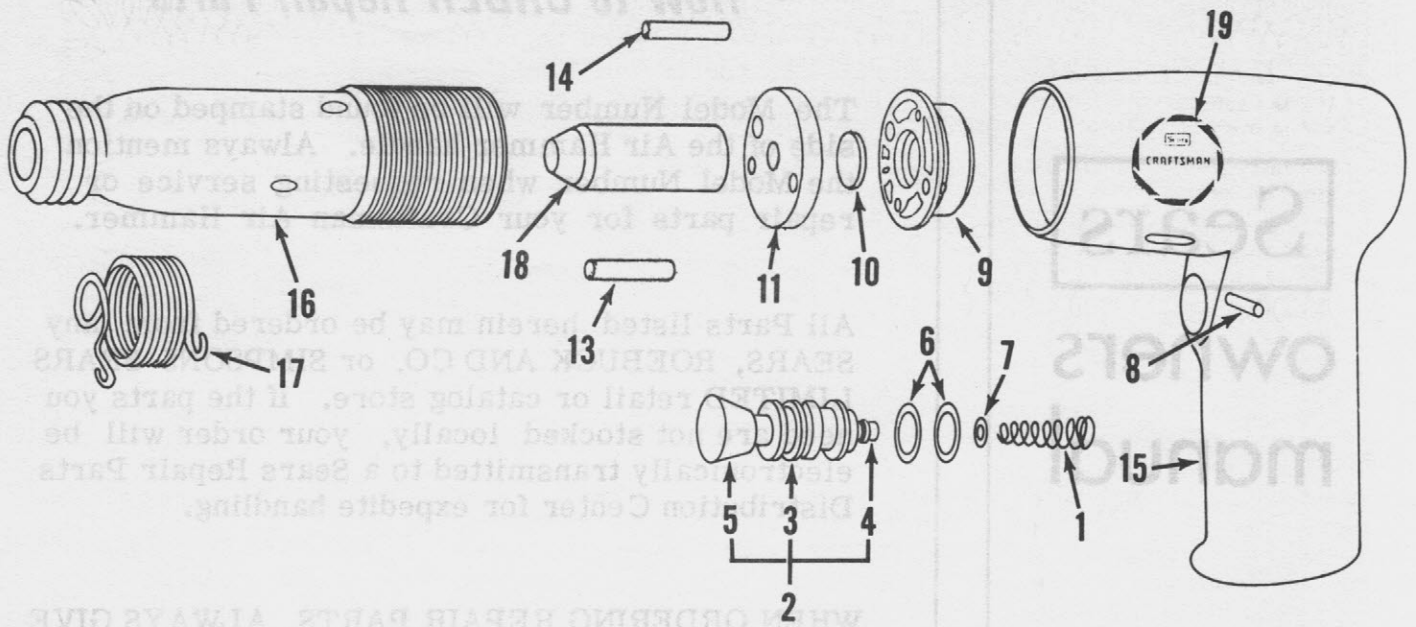
### DISASSEMBLY

1. Drive roll pin (8) out of handle (15) and pull out throttle valve assembly (2) with valve bushing (3) and spring (1). Check "O" rings (6, 7) for wear and replace if required.
2. Heat handle (15) with hot air or in an oven to expand the bore and clamp chisel retainer (17) in vise, unscrew handle. Lift valve case lid (9), valve case (11), valve disc (10) with (large) case dowel (13) and (small) case dowel (14) off of cylinder. Remove piston (18) from cylinder.

### ASSEMBLY

1. Place piston (18) in cylinder (16). Place (large) case dowel (13) and (small) case dowel (14) in cylinder. Aligning case dowels with proper holes, place valve case (11) on cylinder. Place valve disc (10) in central opening in valve case and place valve case lid (9) on valve case.
2. Apply a few drops of Loctite "Stud Lock" to threads of cylinder and screw into handle. Tighten to 45/60 ft. lbs.
3. Place two lightly oiled "O" rings (6) on valve bushing and slip "O" ring (7) on end of throttle stem (4).
4. Place stem spring (1) in handle (15) and insert throttle valve assembly (2) in handle. Drive roll pin (8) through handle and groove in throttle valve assembly.

# CRAFTSMAN AIR HAMMER - MODEL NUMBER 756.18850



## PARTS LIST

Key No.	Part No.	Description	Key No.	Part No.	Description
1	20137494	Stem Spring	10	21641793	Valve Disc
2	216114258	Throttle Valve Ass'y (Incl: Key No's. 3, 4 & 5)	11	216122250	Valve Case
3	216114259	Valve Bushing	13	21643627	Case Dowel (Large)
4	216114260	Throttle Stem	14	21641797	Case Dowel (Small)
5	216114261	Throttle Button	15	216123989	Handle
6	21192537	"O" Ring (-014)(2 Req'd)	16	216118147	Cylinder
7	21183076	"O" Ring (-007)	17	21692007	Chisel Retainer
8	21371613	Roll Pin (1/8 x 3/4")	18	21641791	Piston
9	216118717	Valve Case Lid	19	216128689	Decal (2 Req'd)
				206120275	Instructions & Parts List





**Sears**  
**owners**  
**manual**

**MODEL NO.**  
**756.18850**

**Sears**  
**SERVICE**  
*is at*  
**YOUR**  
**SERVICE**

## *How to ORDER Repair Parts*

The Model Number will be found stamped on the side of the Air Hammer handle. Always mention the Model Number when requesting service or repair parts for your Craftsman Air Hammer.

All Parts listed herein may be ordered from any SEARS, ROEBUCK AND CO. or SIMPSONS-SEARS LIMITED retail or catalog store. If the parts you need are not stocked locally, your order will be electronically transmitted to a Sears Repair Parts Distribution Center for expedite handling.

**WHEN ORDERING REPAIR PARTS, ALWAYS GIVE THE FOLLOWING INFORMATION:**

- | Part No. | Key No. |
|----------|---------|
| 2101170  | 10      |
| 2101171  | 11      |
| 2101172  | 12      |
| 2101173  | 13      |
| 2101174  | 14      |
| 2101175  | 15      |
| 2101176  | 16      |
| 2101177  | 17      |
| 2101178  | 18      |
| 2101179  | 19      |
| 2101180  | 20      |
| 2101181  | 21      |
| 2101182  | 22      |
| 2101183  | 23      |
| 2101184  | 24      |
| 2101185  | 25      |
| 2101186  | 26      |
| 2101187  | 27      |
| 2101188  | 28      |
| 2101189  | 29      |
| 2101190  | 30      |
1. PART NUMBER
  2. PART DESCRIPTION
  3. MODEL NUMBER
  4. NAME OF ITEM

Your Sears Merchandise takes on added value when you discover that Sears has over 2,000 Service Units throughout the country. Each is staffed by Sears - trained, professional technicians using Sears approved methods.

Sold by SEARS, ROEBUCK AND CO., Chicago, IL 60684 U.S.A.  
and SIMPSONS-SEARS LIMITED, Toronto, Ontario, Canada