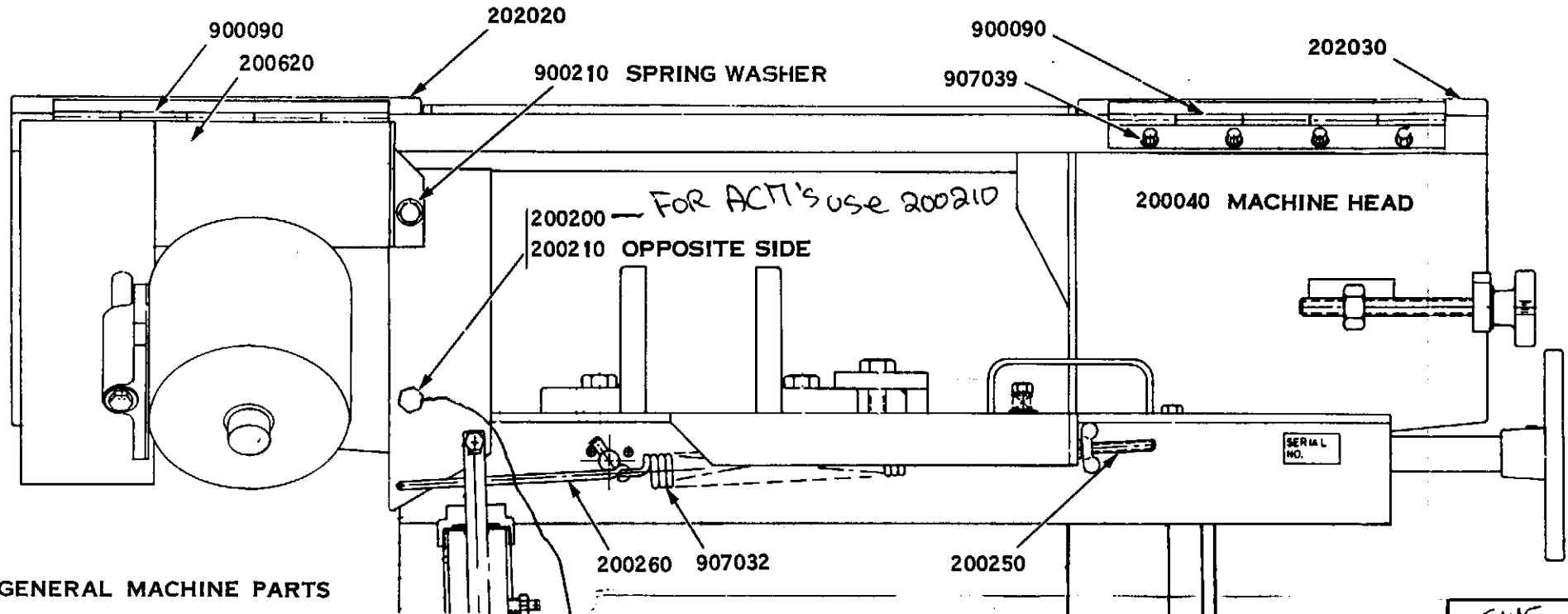


AM17



13

GENERAL MACHINE PARTS

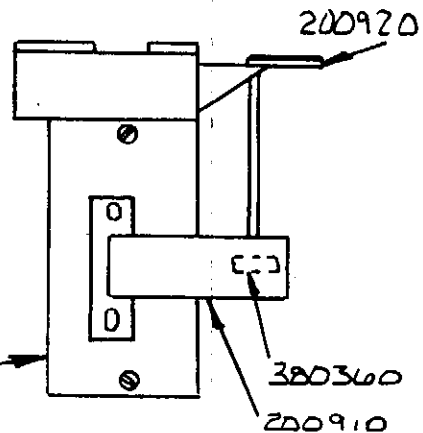
- 200200 HEAD PIVOT BOLT (MOTOR SIDE)
- 200210 HEAD PIVOT BOLT (CUT-OFF SIDE)
- 202030 IDLER WHEEL GUARD
- 202020 DRIVE WHEEL GUARD
- 200490 SWITCH TRIPPER
- 200250 COUNTERBALANCE TENSION SCREW
- 200260 SPRING ROD
- 200620 MOTOR PULLEY GUARD
- 200450 SINGLE PHASE SWITCH COVER
- 200910 THREE PHASE SWITCH LEVER
- 200920 THREE PHASE SWITCH ROD
- 380360 THREE PHASE ROD CLAMP
- 900090 GUARD HINGE
- 900210 SPRING WASHER
- 907032 COUNTERBALANCE SPRING
- 907039 LOCK WASHER
- 920300 SINGLE PHASE SWITCH
- 929902 SINGLE PHASE SWITCH BOX

200061 PIVOT BAR

GIVE SERIAL # WHEN ORDERING SWITCH

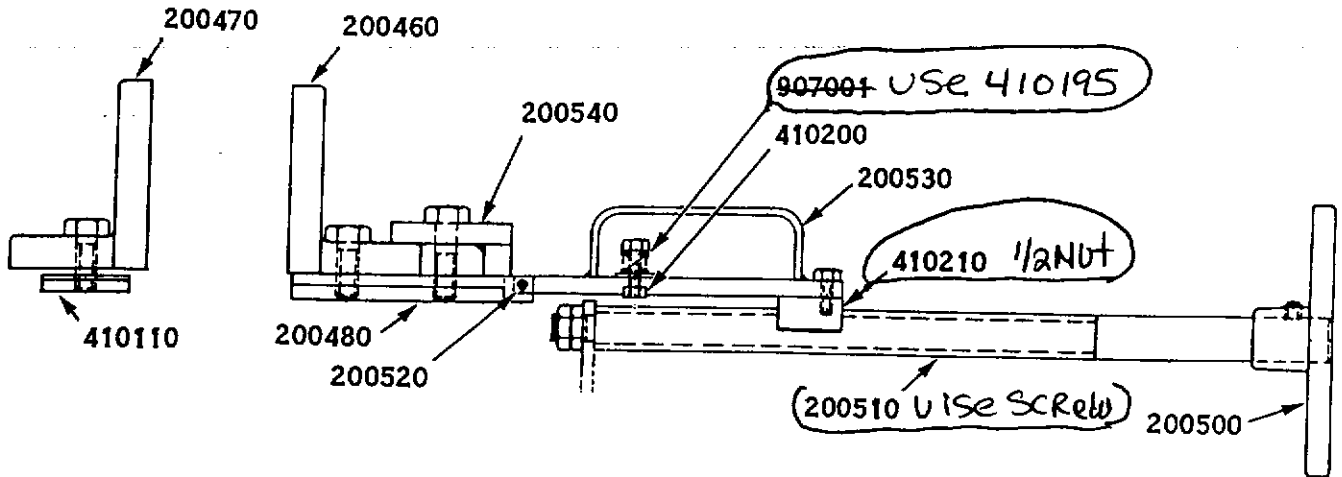
200010 MACHINE BASE

- 920305 3Ph FURNAS 11CB3B
- 920306 1Ph FURNAS 11CB2B



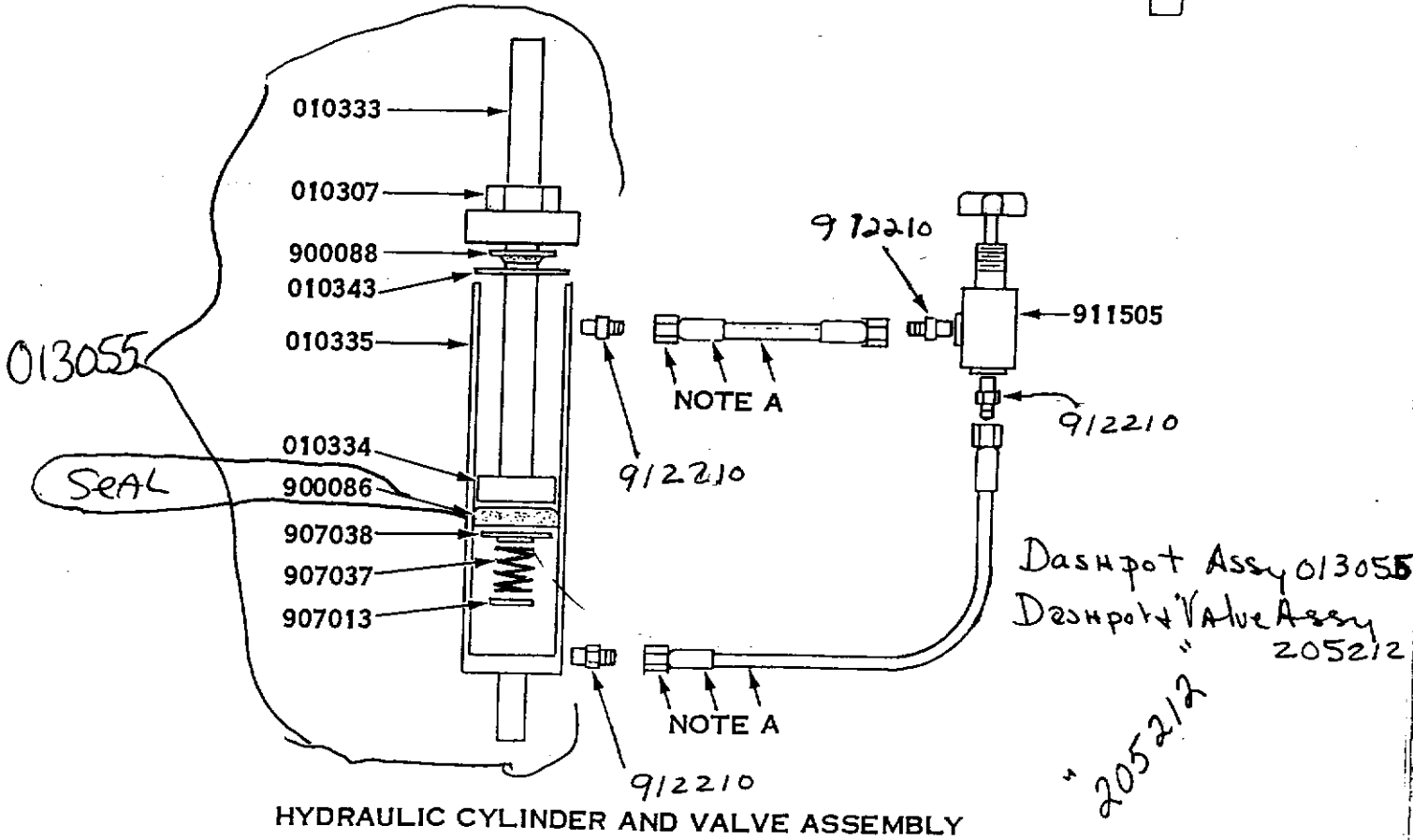
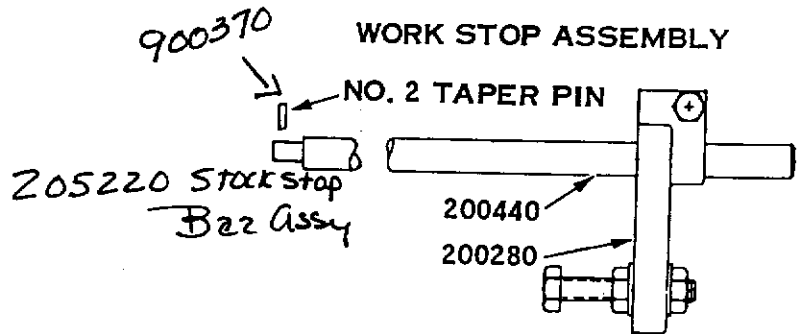
A7

### SAW VISE ASSEMBLY



SEE PAGE 13 FOR PARTS LIST

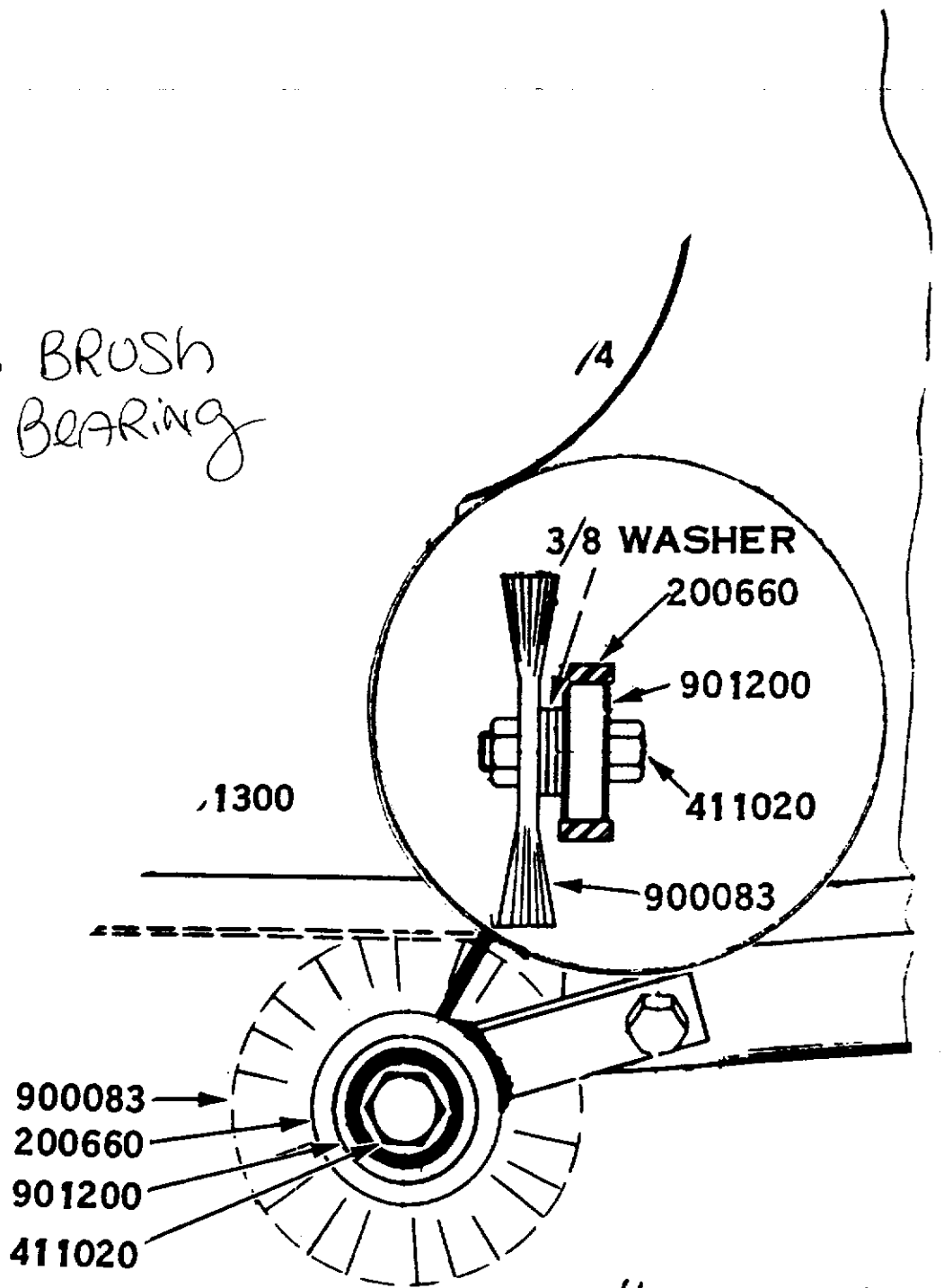
### WORK STOP ASSEMBLY



HYDRAULIC CYLINDER AND VALVE ASSEMBLY

A7  
AC7

900083 BRUSH  
901200 BEARING



900083  
200660  
901200  
411020

BRUSH ASSY # 205240

RECOMMENDED SPARE PARTS FOR 95% INSURANCE AGAINST DOWNTIME  
On A Replace-As-Used Basis

Group I, 2,000 Hours

Effective

Qty Part# Description

1	900083	Blade brush, $\frac{3}{8}$ " bore, 3" diameter, $\frac{1}{2}$ " face, .014 wire
5	901200	Blade brush bearing, (1) Blade guide rollers, (4), <u><math>\frac{1}{2}</math>" blade</u> Fafnir# 200KPP
1	908501	Blade drive belt, motor, $\frac{1}{2}$ hp. Uniroyal# 3 L 260
1	908502	Blade drive belt, pulley, Uniroyal# 4 L 250
2	901300	Blade backup roller, Fafnir# 300KPP
1	410210	Vise screw, barrel half-nut
1		Gallon Hydraulic fluid, light, 135-165 SSU

Group I Parts Total \$

Group II, 5,000 Hours

1	900086	Lift cylinder leather, $1\frac{3}{4}$ ", Marsh# ITFA-616 CF 23-3
1	200110	Drive wheel ring gear
1	200060	Drive wheel pinion gear

Group II Parts Total \$

Group III, 10,000 Hours

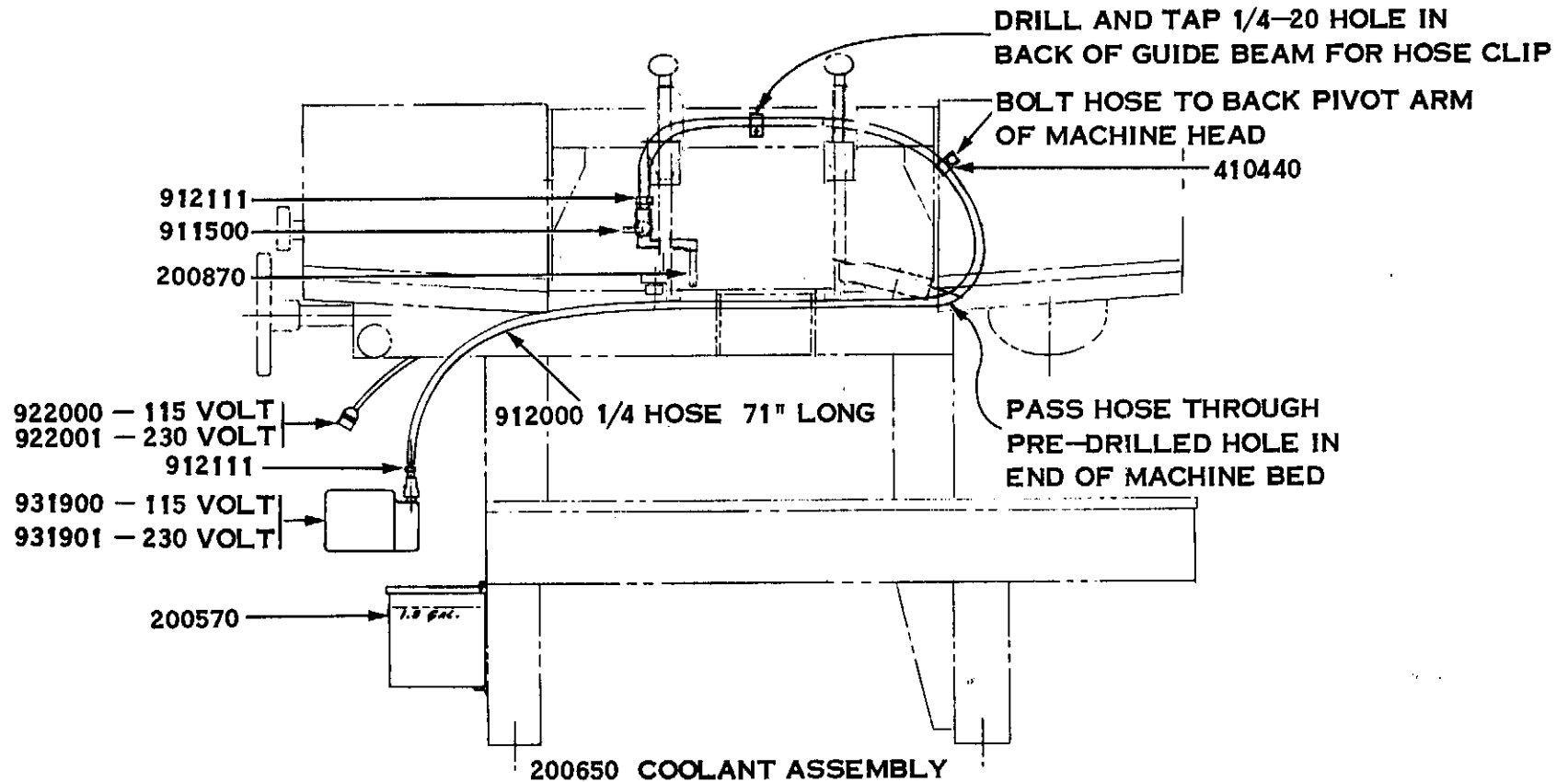
1	200120	Tension wheel, $\frac{1}{2}$ " blade
2	901204	Tension wheel bearings, Fafnir# 204KPP
1	200130	Drive wheel, $\frac{1}{2}$ " blade

Group III Parts Total \$

All three groups total \$

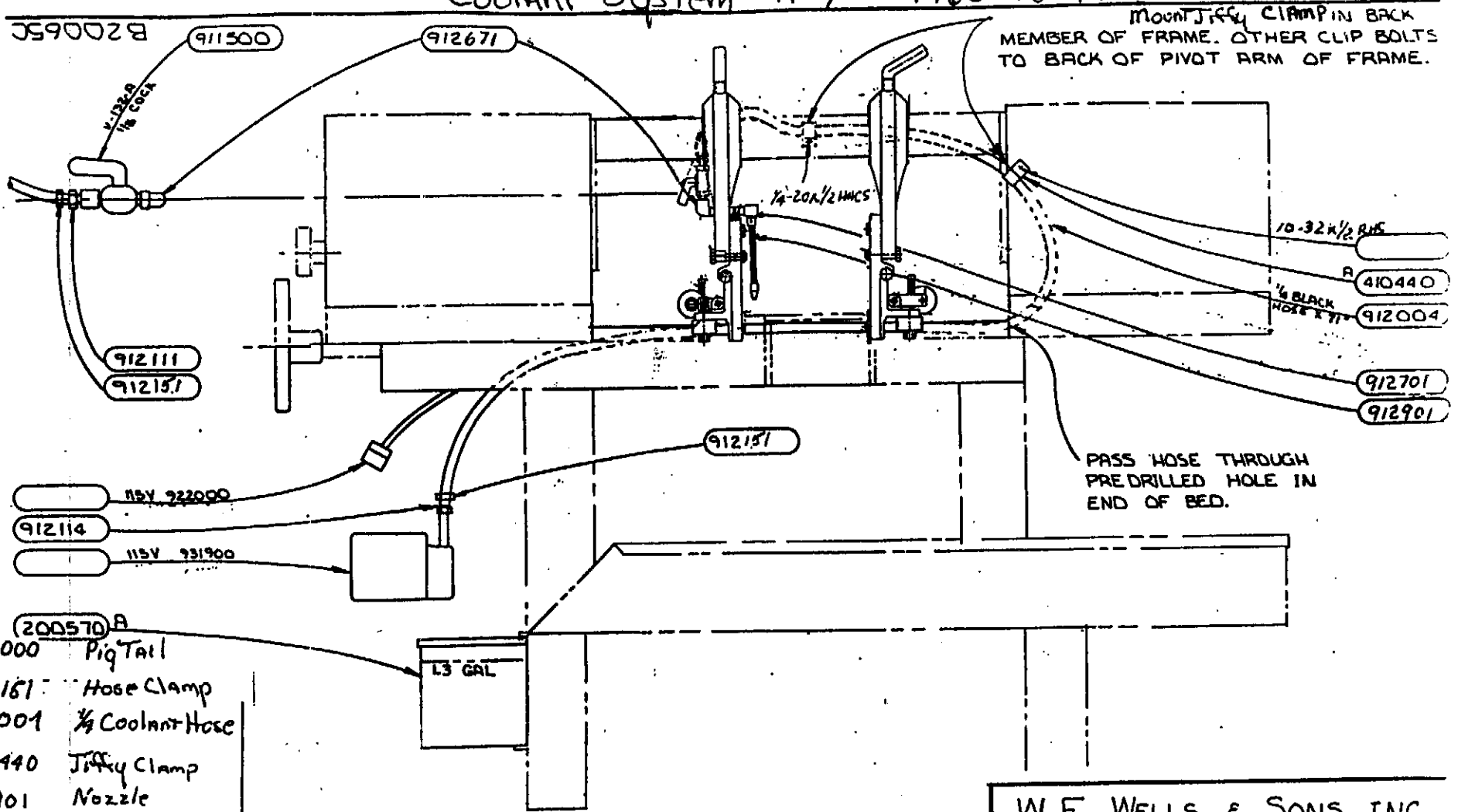
A7

# Coolant For 200810 Guide Arms



200570	COOLANT TANK	912111	HOSE FITTING
200870	COOLANT NOZZLE	922000	RECEPTACLE AND CORD 115 VOLTS
410440	HOSE CLIP	922001	RECEPTACLE AND CORD 230 VOLTS
911500	COOLANT SHUT-OFF	931900	COOLANT PUMP 2E-NT, 115 VOLTS
912000	COOLANT HOSE (GIVE LENGTH)	931901	COOLANT PUMP 2E-NT, 230 VOLTS

# Coolant System A-7 1963 To 1972



MOUNT JERRY CLAMP IN BACK MEMBER OF FRAME. OTHER CLIP BOLTS TO BACK OF PIVOT ARM OF FRAME.

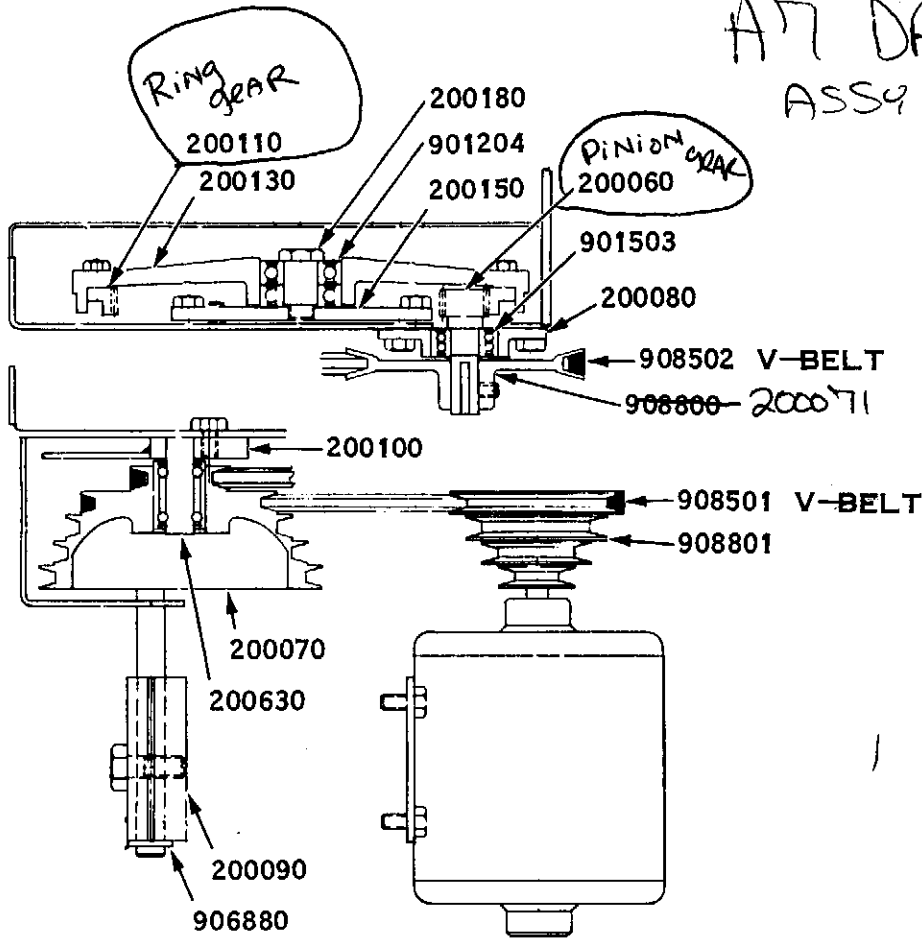
PASS HOSE THROUGH PRE-DRILLED HOLE IN END OF BED.

- (1) 922000 Pig Tail
- (2) 912161 Hose Clamp
- (7) 912001 1/2 Coolant Hose
- (2) 410440 Jerry Clamp
- (1) 912901 Nozzle
- (1) 912701 1/8 ST EL (Long)
- (1) 911500 Valve
- (1) 912671 1/8 ST EL
- (1) 200570 Coolant Tank
- (1) 912114 Fitting
- (1) 931900 Coolant Pump (115 volt)

<b>W. F. WELLS &amp; SONS INC.</b>		
DRAWN BY:	APPROVED BY:	DRAWN BY SCHLAF:
DATE: 12 OCT 62		REVISED:
<b>B A-7 COOLANT ASS'Y</b>		
		DRAWING NUMBER:

A7 DRIVE  
ASSY PAGE

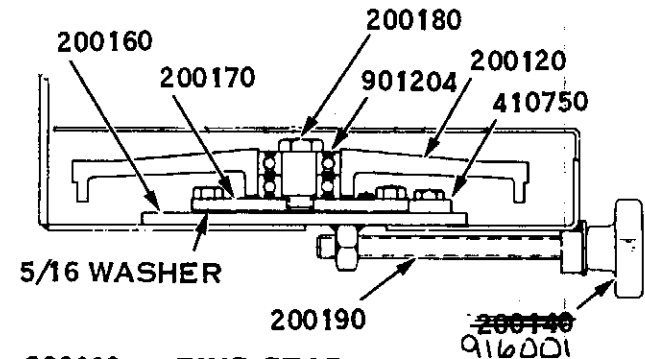
Drive wheel 3/4" 205299  
Idle wheel 3/4" 205299  
Drive wheel 1/2" 205061  
Idle wheel 1/2" 205070



BLADE DRIVE ASSEMBLY

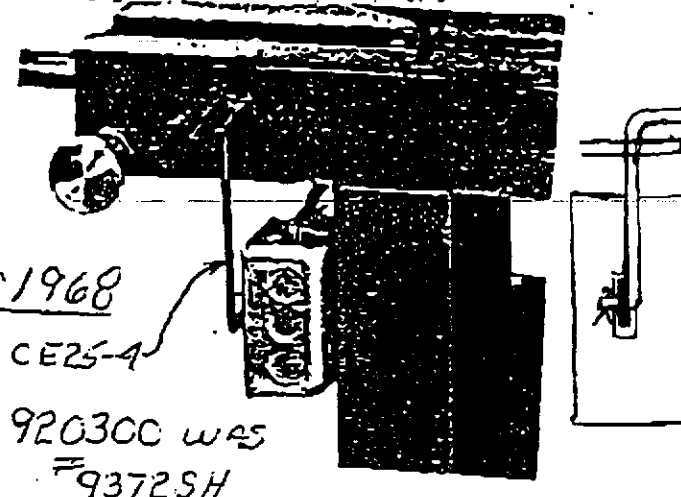
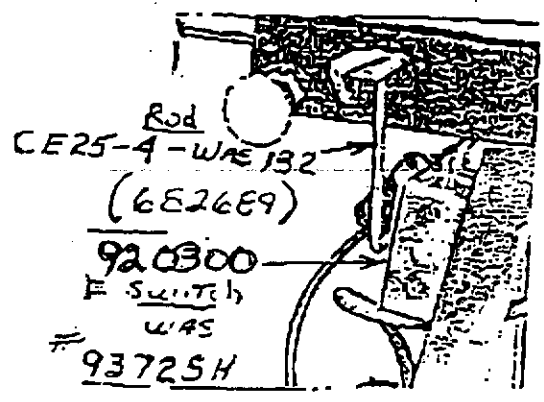
- 200060 PINION GEAR AND SHAFT
- 200070 LARGE 5 STEP PULLEY
- 200080 PINION BEARING FLANGE
- 200090 MOTOR MOUNT
- 200100 COUNTERSHAFT MOUNT

*assy*  
205020



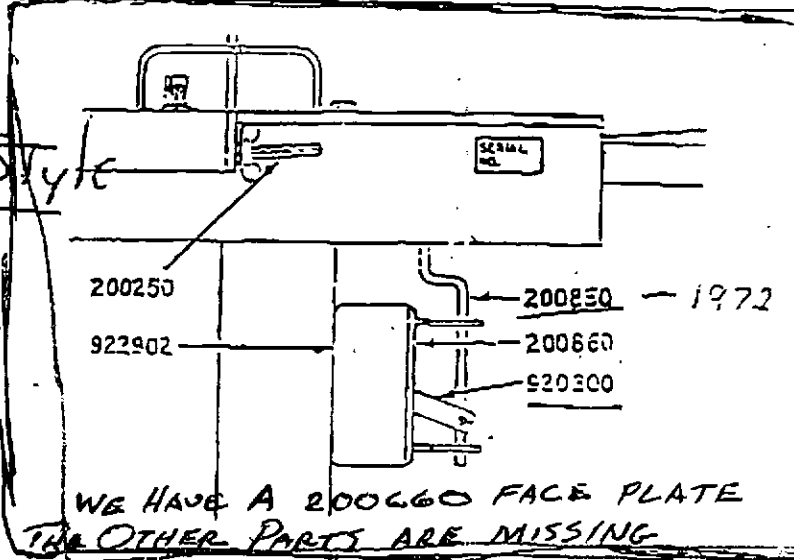
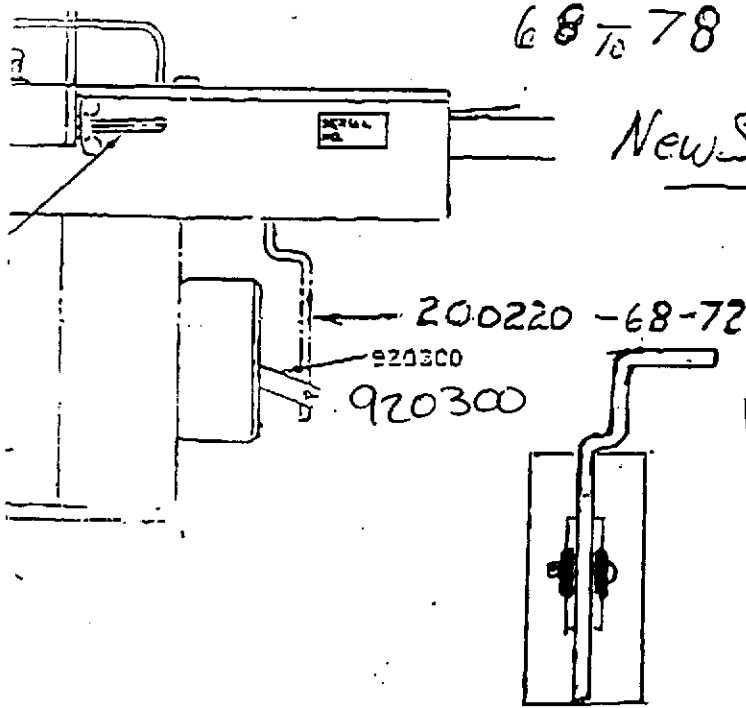
- 200110 RING GEAR
  - 200120 BLADE IDLER WHEEL 1/2"
  - 200130 BLADE DRIVE WHEEL 1/2"
  - 200140 BLADE TENSION KNOB
  - 200150 DRIVE AXLE PLATE
  - 200160 IDLER SLIDE PLATE
  - 200170 IDLER AXLE PLATE
  - 200180 WHEEL AXLE - Stud ONLY
  - 200190 BLADE TENSION SCREW
  - 200630 BEARING AND COUNTERSHAFT
  - 410750 SLIDE PLATE RETAINERS
  - 901204 WHEEL BEARINGS (2 REQ'D)
  - 901503 PINION GEAR BEARING
  - 906880 RETAINING CLIP
  - 908501 V-BELT 3L260
  - 908502 V-BELT 4L250 - WIDER
  - 908800 1 GROOVE PULLEY
  - 908801 4 GROOVE MOTOR PULLEY
- 205070  
205061  
916001  
200071

Old Style

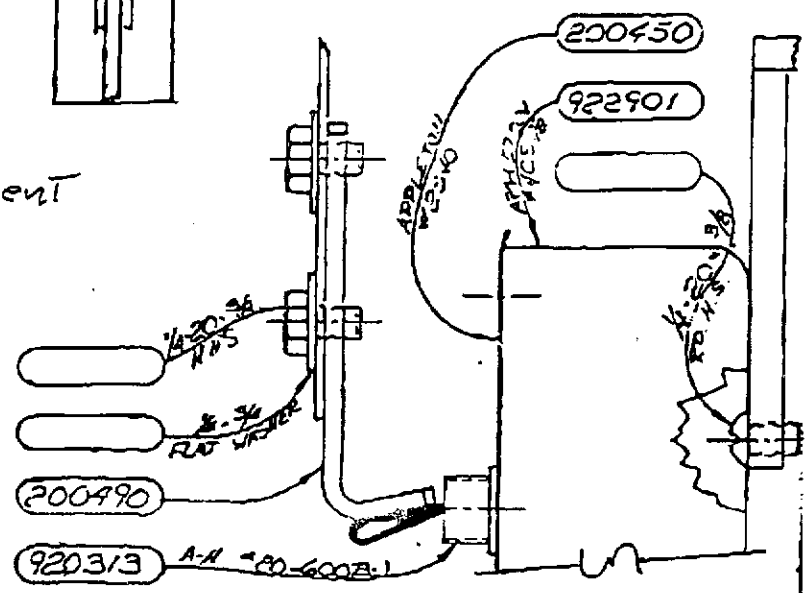
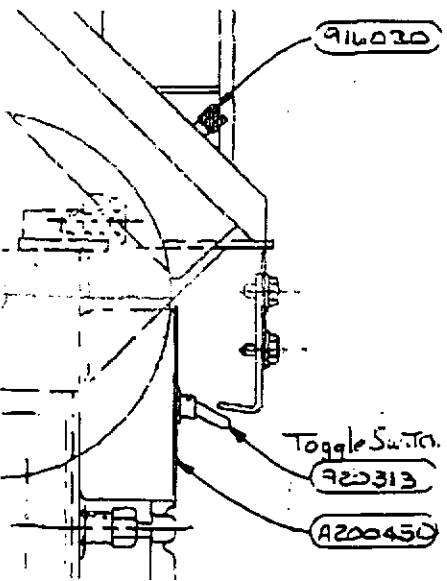


68 to 78

New Style



78 to Present

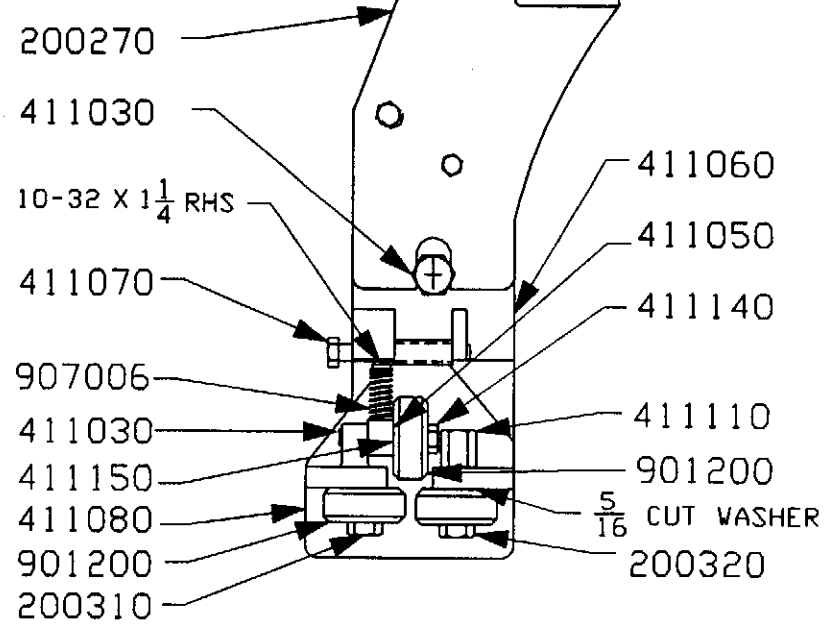
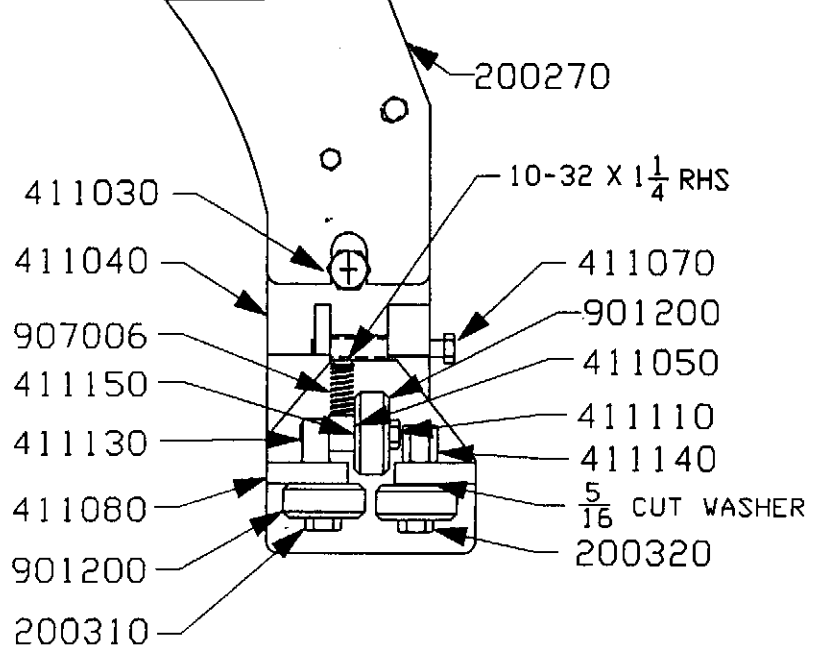
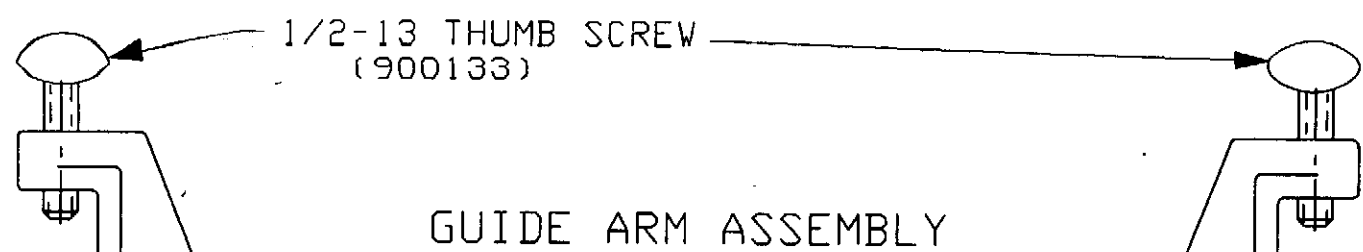


SINGLE PHASE SWITCH ASSEMBLY

ACT ONLY



A7 64/73  
 upto →



205090 IDLE GUIDE LESS BRGS & BOLTS  
 205120 IDLE GUIDE WITH BRGS & BOLTS

205130 DRIVE GUIDE LESS BRG & BOLTS  
 205150 DRIVE GUIDE WITH BRG & BOLTS

BLADE BRUSH ASSEMBLY

