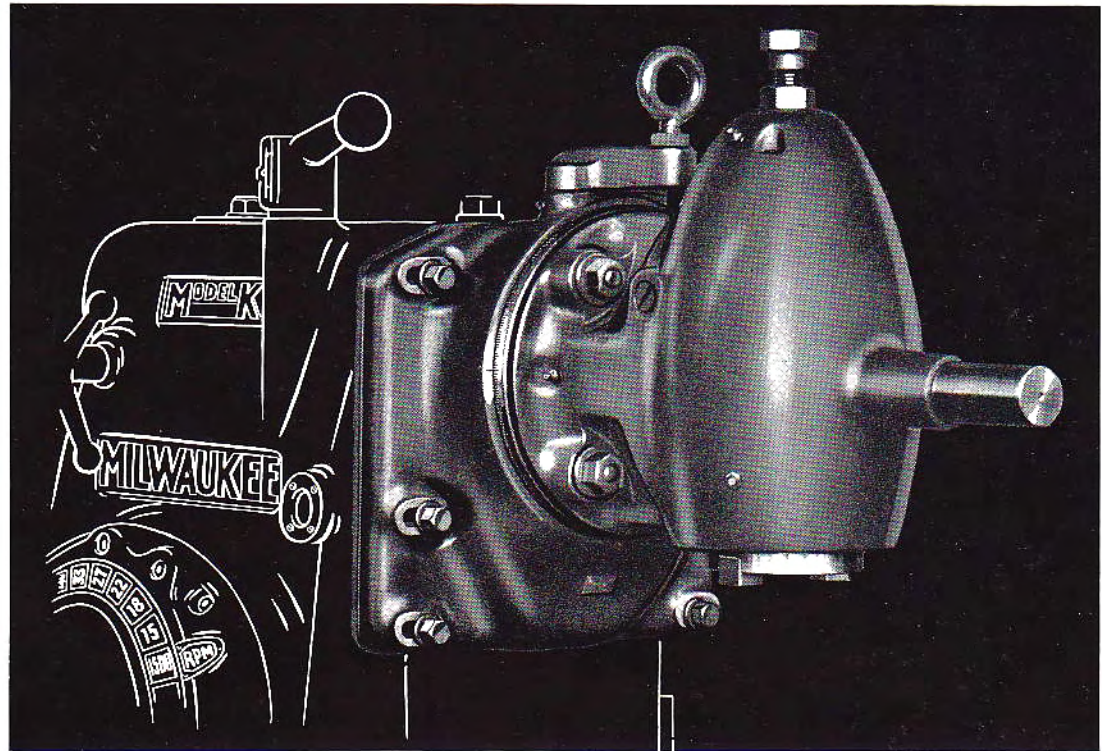


Heavy Duty SWIVEL HEAD VERTICAL MILLING ATTACHMENT



For Models H, KM and K Horizontal Milwaukee Milling Machines

EVERY shop has a certain amount of work which can be milled more efficiently by having the cutters revolve in a horizontal plane. When the volume of such work does not warrant the installation of a vertical machine, a vertical spindle attachment mounted on a horizontal milling machine, is practically a necessity. In shops that have both types of milling machines, the vertical attachment is of importance because of the flexibility and versatility it adds to the equipment.

The attachment is dove-tailed and gibbed to the column and supported by both overarms. The drive from the machine spindle is through helical hardened and ground gears, the drive shaft and attachment spindle being multiple splined and revolving on anti-friction bearings. The attachment spindle is driven through spiral bevel gears. The spindle housing is graduated and the spindle can be set at any angle through 360° and clamped at four equidistant points. The full vertical range of the machine can be utilized because the face of the attachment spindle is approximately in line with the machine spindle, the difference being less than 1".

The speed of the attachment spindle is the same as the machine spindle — 1 to 1 ratio, a decided convenience in setting the proper speed for the cutter and the type of material being machined. The larger size cutters are bolted directly to the spindle nose. Smaller cutters are mounted to Style "C" Arbors and drawn in place and locked with the draw-in bolt.

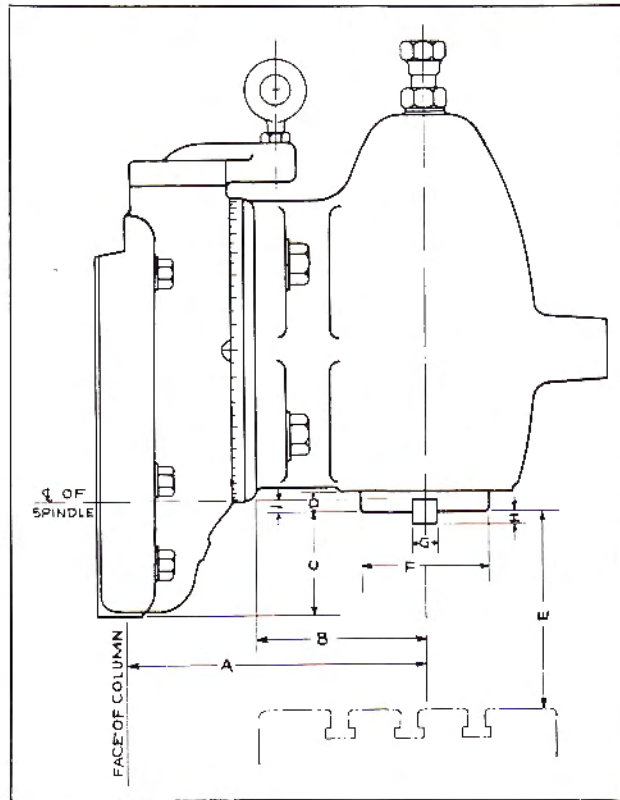
The attachments for Models 1H, 2HL and 2H have No. 40 National Standard Spindle End, and for Models 2K, 3H and larger, the attachments are equipped with No. 50 spindle end. This permits interchangeability of arbors and collets between the machine and the attachment.

A crane and parking unit for Models 1H, 2HL and 2H Horizontal Machines can be furnished. This unit can be applied at the factory only.

The Heavy Duty Swivel Head Vertical Spindle attachment, for the Models 2K, 3H and larger machines, is equipped with a bracket to attach the head to the outer arm brace of the machine for greater strength and rigidity. A universal coolant coupling is provided with all attachments.

KEARNEY & TRECKER CORPORATION
MILWAUKEE, WISCONSIN, U. S. A.

DIMENSIONS and SPECIFICATIONS



	A	B	C	D	E	F	G	H	I	Net Wt. Lbs.	Code Word
1H PLAIN	8½"	4¾"	1⅞"	¾"	15¼"	3½"	⅝"	⅞"	1"	154	SPOCO
1H UNIV.	8½"	4¾"	1⅞"	¾"	14¼"	3½"	⅝"	⅞"	1"	154	SPOCO
2HL PLAIN	8½"	4¾"	1⅞"	¾"	15¼"	3½"	⅝"	⅞"	1"	154	SPOCO
2HL UNIV.	8½"	4¾"	1⅞"	¾"	14¼"	3½"	⅝"	⅞"	1"	154	SPOCO
2H PLAIN	9⅝"	5⅜"	2⅞"	¾"	16¼"	3½"	⅝"	⅞"	1"	164	SPINU
2H UNIV.	9⅝"	5⅜"	2⅞"	¾"	15"	3½"	⅝"	⅞"	1"	164	SPINU
2KM PLAIN	12	6¾"	4⅞"	¾"	16⅞"	5⅞"	1"	½"	½"	415	HOKLO
2KM UNIV.	12	6¾"	4⅞"	¾"	15⅞"	5⅞"	1"	½"	½"	415	HOKLO
2K PLAIN	12	6¾"	4⅞"	¾"	16⅞"	5⅞"	1"	½"	½"	395	HOKLO
2K UNIV.	12	6¾"	4⅞"	¾"	15⅞"	5⅞"	1"	½"	½"	395	HOKLO
3H PLAIN	12	6¾"	4⅞"	¾"	16⅞"	5⅞"	1"	½"	½"	395	HIKIB
3H UNIV.	12	6¾"	4⅞"	¾"	15⅞"	5⅞"	1"	½"	½"	395	HIKIB
3KM PLAIN	14¼"	6¾"	4⅞"	¾"	17⅞"	5⅞"	1"	½"	½"	460	HOKZY
3KM UNIV.	14¼"	6¾"	4⅞"	¾"	16"	5⅞"	1"	½"	½"	460	HOKZY
3K PLAIN	14¼"	6¾"	4⅞"	¾"	17⅞"	5⅞"	1"	½"	½"	448	HOKZY
3K UNIV.	14¼"	6¾"	4⅞"	¾"	16"	5⅞"	1"	½"	½"	448	HOKZY
4H PLAIN	14¼"	6¾"	4⅞"	¾"	17⅞"	5⅞"	1"	½"	½"	448	HIKNO
4H UNIV.	14¼"	6¾"	4⅞"	¾"	16"	5⅞"	1"	½"	½"	448	HIKNO
4K and 5H PLAIN	16	6¾"	7⅞"	¾"	17¾"	5⅞"	1"	½"	½"	535	4K-HOKLE 5H-HYRIX
4K AND 5H UNIV.	16	6¾"	7⅞"	¾"	15⅞"	5⅞"	1"	½"	½"	535	4K-HOKLE 5H-HYRIX

The manufacturer reserves the right to improve, change, or modify the construction of these milling machines or attachments or any part thereof, as he may see fit, without incurring any obligation to make like changes on K&T MILWAUKEE Milling Machines or attachments previously sold.

KEARNEY & TRECKER CORPORATION