



<https://www.dumoretools.com/parts/series-10-hand-grinders> printed on 5/25/2021

Part 8572-210 (Past Catalog Reference: 10-351)

Series 10 Hand Grinders | Replacement Parts

Use the numbered parts drawings and tables below to identify replacement parts or assemblies you need for the Series 10 Hand Grinder. Accessories and supplies, including rotary files, mounted points (1/8" & 1/4") and speed controls, are also available. If you don't find what you're looking for or need assistance, please contact Dumore.

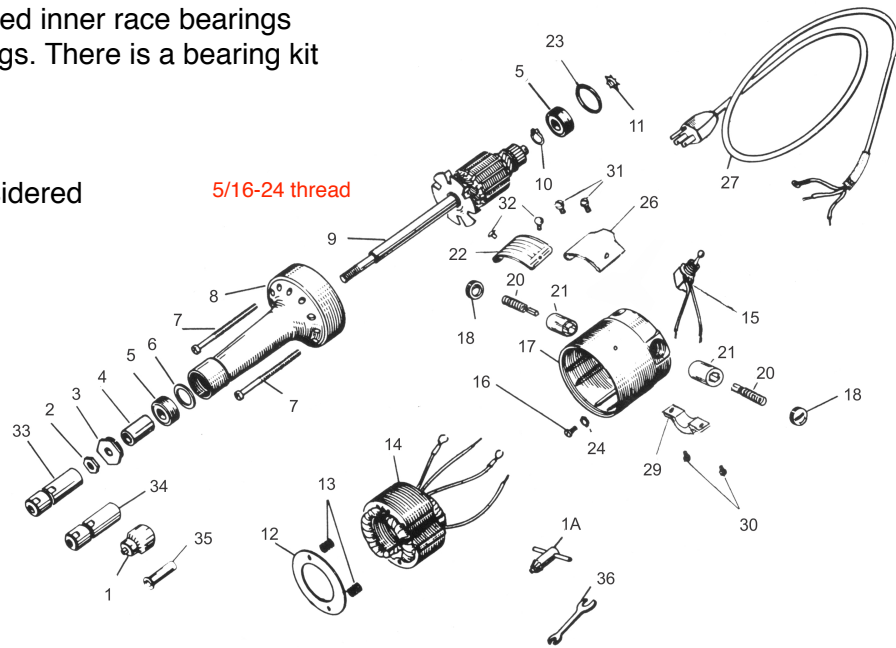
My grinder: 10-311

During 1999 - 2001, the extended inner race bearings were replaced w/regular bearings. There is a bearing kit for those older grinders.

The 10-011 would need a kit.

All 9, 10, & 35 models are considered current as of 5/28/2021.

The Super 10 Series (tapered nose cone) is made for one distributor in (Ontario?) Canada



Part	Part #	Part Name	
1	487-0068-001	Chuck Assembly, 0-5/32"	\$96.59
1A	R788-0022	Chuck Key	\$7.67
2	R645-0331	Lock Nut	\$8.20
3	R476-0128	Bearing Cap	\$9.12
4	729-0188	Chuck Spacer	\$5.76
5	426-0346	Ball Bearing Originals: NTN 608Z New: 6082RS	\$4.41
6	R729-0176	Spacer	\$1.92
7	828-3709	Housing Screw	\$1.57
8	599-0027	Plain End Housing	\$62.27
9	408-1067-210	Armature Assembly	\$128.63
10	R686-0090	Retaining Ring	\$1.14
11	R734-0034	Spring	\$1.14
12	R414-0026	Baffle	\$2.22
13	R735-0132	Baffle Coil Spring Spacer	\$1.45
14	548-0568-	Field Assembly	\$75.88

	<u>270</u>		
14A	<u>510-0064</u>	Connector	\$1.14
15	<u>751-0139</u>	Toggle Switch	\$18.51
15A	<u>R769-0015</u>	Lock Washer	\$1.28
16	<u>R821-0309</u>	Ground Screw	\$1.31
17	<u>590-0098</u>	Brush End Housing	\$110.36
18	<u>R456-0127</u>	Brush Plug	\$1.45
20	<u>457-0837</u>	Carbon Brush & Spring	\$7.92
21	<u>R451-0070</u>	Brush Holder Assembly	\$13.20
23	<u>R686-0082</u>	O-Ring	\$1.28
24	<u>R769-0003</u>	Lock Washer	\$1.28
26	<u>520-0120</u>	Cover Plate	\$6.93
27	<u>517-0251</u>	Cord	\$13.00
29	<u>493-0002</u>	Cord Clasp	\$2.96
30	<u>890-0709</u>	Screw	\$1.28
31	<u>828-0409</u>	Screw	\$1.25
32	<u>R808-0007</u>	Screw	\$1.31
33	<u>487-0066</u>	Chuck Assembly, 1/8"	\$40.89
34	<u>487-0067</u>	Chuck Assembly, 1/4"	\$43.10
35	<u>503-0012</u>	Reducing Collet, 1/8"	\$8.32
36A	<u>788-0076</u>	Wrench, 7/16" & 1/2"	\$6.81
36B	<u>788-0077</u>	Wrench, 3/8" & 7/16"	\$6.81
	<u>RS479-0057</u>	Case	\$30.40
	<u>884-2001</u>	Operating Instructions	\$20.00

Some notes on servicing newer 10-xxx models:

Cord replacement: The field coil assembly is a slip fit into the housing. There's not much room. Loosening the switch locknut, & removing the cord clamp will help give enough slack to lower the field assembly out to access the connections. The ground screw will be accessible when the power switch is removed. The factory wires the connections first and then pushes into the housing. Do not undo the brush holder clips as they don't always spring back.

Bearing replacment: Bearings are a light press fit onto the shaft. Install the top bearing first. Measure the length of the spindle protuding past the bearing cap before disassembly. The press fit of the lower bearing is blind so measuring the length of the protrusion will verify the bearing is against the shoulder on the spindle.

The factory uses a bronze split clamping fixture to hold the nose will turning the bearing cap (#3). Press only on the inner races when installing the new bearings. Use a pair of jam nuts to grip the threaded end of the spindle to turn the lock nut (#2).

There are running changes so it would be a good idea to include basic dimensions when ordering parts.