

Prices Shown In Master Price List MPL-100

PARTS LIST

FOR B600 SERIES

K. O. Lee GRINDERS

MODELS B600, B602, B660, and B662 TOOL GRINDERS



MODEL B603 CHIP BREAKER GRINDER



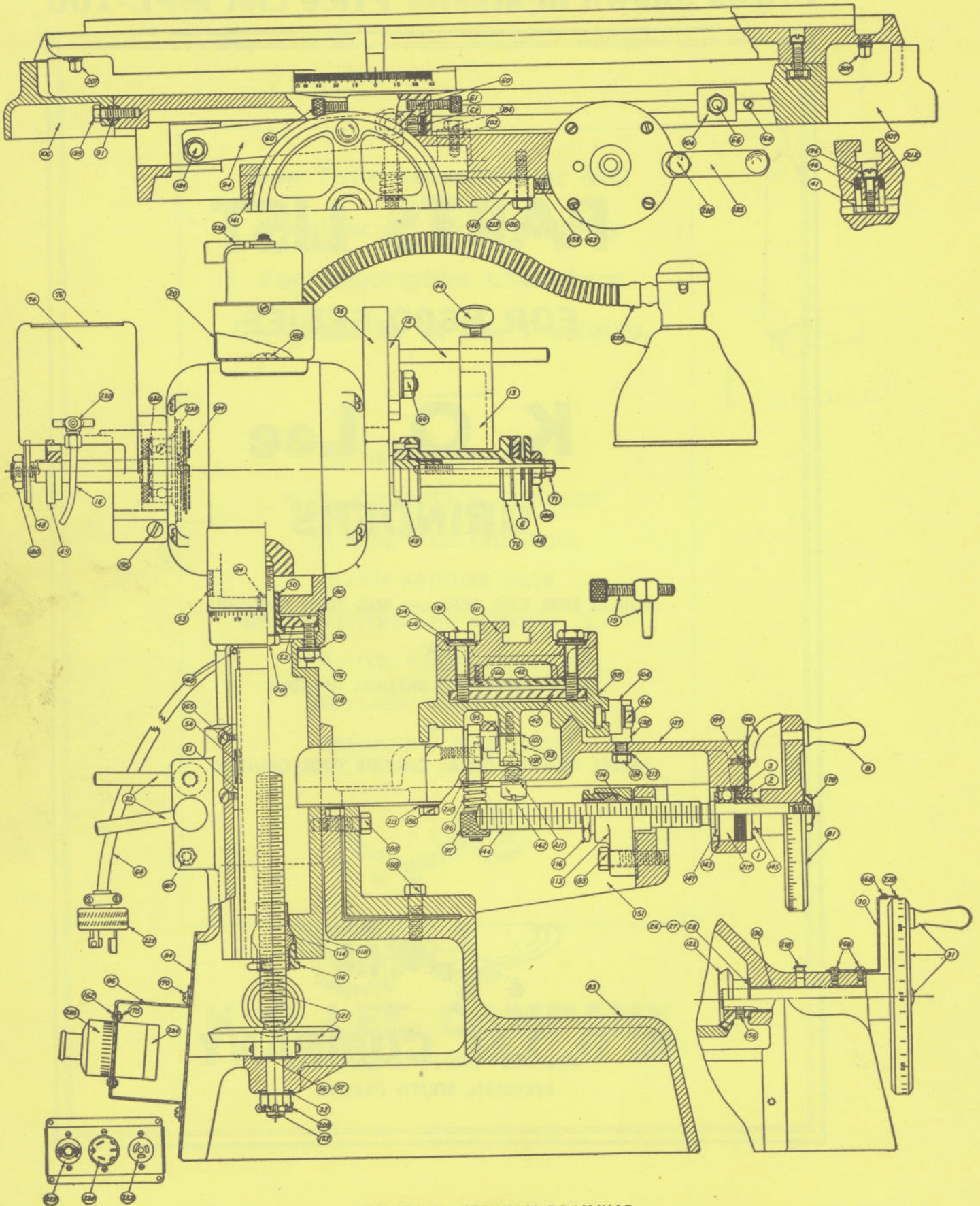
MODEL B604 UNIVERSAL CARBIDE TOOL GRINDER



K. O. LEE COMPANY

ABERDEEN, SOUTH DAKOTA

B600 SERIES "KNOCK-OUT" TOOL GRINDER



GENERAL ASSEMBLY DRAWING

GENERAL ASSEMBLY PARTS PRICE LIST

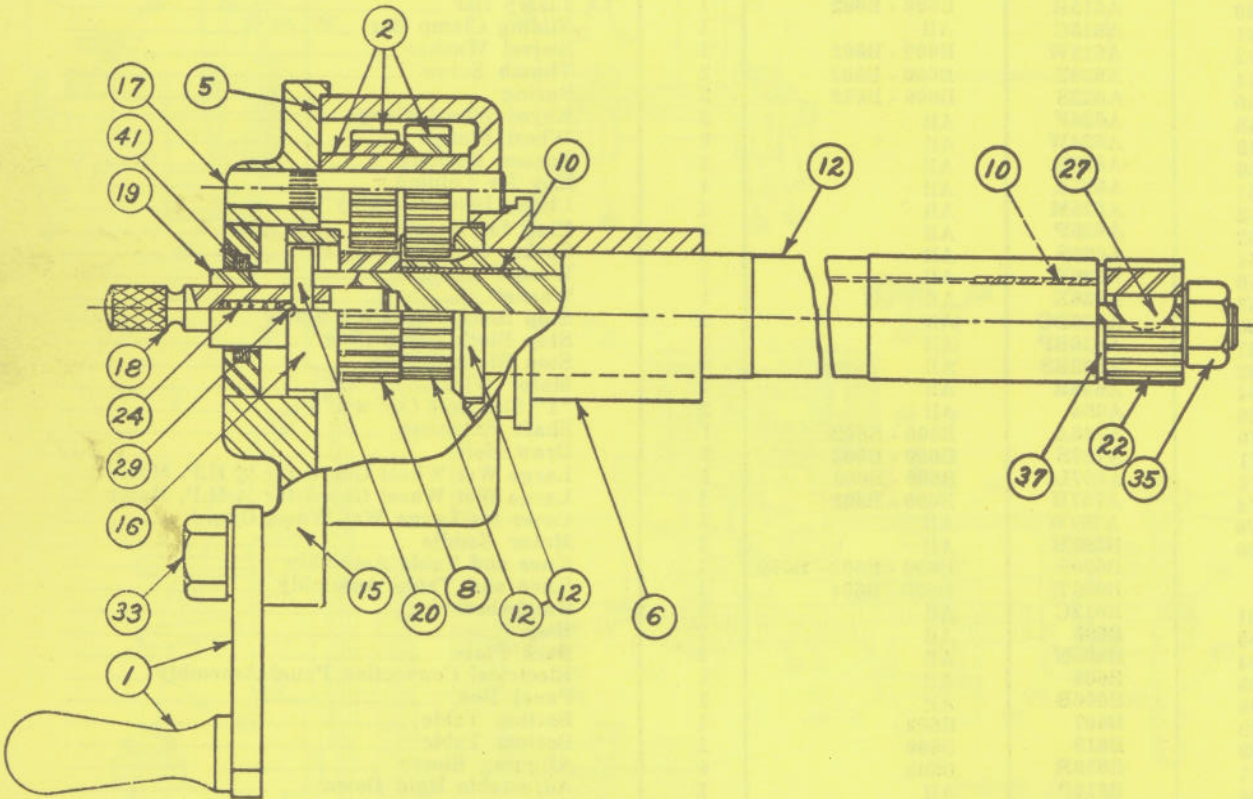
MACHINE ASSEMBLY MODELS B600, B602, B660 AND B662 UNIVERSAL TOOL GRINDERS, B603 CHIP BREAKER GRINDER, AND B604 UNIVERSAL CARBIDE TOOL GRINDER

INDEX No.	K-O PART No.	MACHINE No. ON WHICH PART IS USED	QUAN. REQ'D.	DESCRIPTION	PRICE EA.
1	A104	All	1	Adjusting Nut	
2	A104F	All	1	Felt Washer	
3	A104S	All	1	Steel Washer	
6	A121W	All	1	Spacing Washer for Thin Wheels	
8	B712H	All	1	Handle for Handwheel	
12	A246B	B600 - B602	2	Wheel Guard Bracket	
13	A246C	B600 - B602	1	4" Wheel Guard	
14	A246D	B600 - B602	1	6" Wheel Guard	
16	A267LT	B600 - B603	2	Copper Tube	
19	A290A	B600 - B602	2	Table Adjusting Screw (Assembly)	
20	A290SC	All	1	Switch Box Assembly	
24	A601G	All	1	Grommet	
26	A604W	All	1	Washer (1 $\frac{1}{8}$ x $\frac{3}{4}$ x 16 ga.)	
27	A604X	All	1	Washer (1 $\frac{1}{8}$ x $\frac{3}{4}$ x 60 ga.)	
28	A604Y	All	1	Washer (1 $\frac{1}{8}$ x $\frac{3}{4}$ x 26 ga.)	
30	A605B	All	2	Pointer Bracket	
31	A605E	All	2	Shaft and Handwheel Assembly	
	B605ET	All	1	Handwheel Shaft	
32	A605S	All	2	Column Locking Screw	
33	A605W	All	3	Washer ($\frac{7}{8}$ x $\frac{3}{4}$ x 16 ga.)	
35	A609A	B600 - B602	2	"T" Slot Arm	
37	A612	All	1	Cord Retainer Wire	
40	A615B	B600 - B602	1	Clamp Bar	
41	A615C	All	1	Sliding Clamp Bar	
42	A615W	B600 - B602	1	Swivel Washer	
44	A620T	B600 - B602	2	Thumb Screw	
46	A622S	B600 - B602	2	Spring	
48	A624F	All	2	Keyed Wheel Flange	
49	A624W	All	2	Wheel Flange	
50	A625B	All	1	Spacer Bushing	
51	A625K	All	1	Key for Column	
52	A625M	All	1	Clamp Disc Assembly	
53	A625P	All	4	Plug for Saddle	
54	A625S	All	1	Spring for Key	
56	A626W	All	1	Washer	
57	A626X	All	1	Washer	
60	A630BC	All	2	Stop Block Adjusting Screw	
61	A630BP	All	2	Stop Block Brass Plug	
62	A630BS	All	3	Stop Block Spring	
64	A638R	All	1	Motor Wire	
66	A654	All	2	"T" Slot Bolt ($\frac{3}{8}$ " x 1")	
70	A736A	B600 - B602	1	Shaft Extension	
71	A736S	B600 - B602	1	Draw Bolt	
74	A767L	B600 - B603	1	Large Wet Wheel Guard for $\frac{1}{4}$ H.P. Motor	
74	A767H	B600 - B603	1	Large Wet Wheel Guard for $\frac{1}{2}$ H.P. Motor	
76	A767W	All	1	Cover for Large Wet Wheel Guard	
80	B289M	All	1	Motor Saddle	
	B600S	B600 - B602 - B660	1	Knee and Table Assembly	
	B603T	B603 - B604	1	Knee and Table Assembly	
81	B612C	All	1	Handwheel	
83	B605	All	1	Base	
84	B605N	All	1	Back Plate	
85	B606	All	1	Electrical Connection Panel Assembly	
86	B606B	All	1	Panel Box	
88	B607	B602	1	Bottom Table	
89	B610	B600	1	Bottom Table	
91	B610B	B600	4	Aligning Sleeve	
94	B610P	All	1	Adjustable Hold Down	
95	B610PR	All	1	Roller	
96	B610PS	All	1	Compression Spring	
97	B610PT	All	1	Thumb Nut	
99	B610K	All	1	Rack for Gear (Straight Teeth)	
99	B610R	All	1	Rack for Gear (Spiral Teeth)	
101	B610S	All	1	Adjusting Shim (16 ga.)	
101	B610S	All	1	Adjusting Shim (24 ga.)	
101	B610S	All	1	Adjusting Shim (26 ga.)	
103	B610T	All	1	Positive Hold Down	
104	B610W	All	2	Adjustable Stop	
106	B611E	B600	1	Table Extension (Degrees)	
107	B611G	B600	1	Table Extension (Taper per ft.)	
107	B610E	B602	2	Table Extension (Plain)	
111	A615	B602	1	Top Table (Plain)	
111	B615	B600	1	Top Table with coolant trough	

K. O. LEE COMPANY

INDEX No.	K-O PART No.	MACHINE No. ON WHICH PART IS USED	QUAN. REQ'D.	DESCRIPTION	PRICE EA.
111	B614	B603	1	Wet Table	
113	B624H	All	1	Link for Feed Nut	
114	B624N	All	2	Feed Nut (Adjustable)	
115	B624P	All	1	Knurled Pin for link	
116	B624S	All	2	Compression Nut	
118	B625	All	1	Column	
119	B625P	All	1	Knurled Pin for Column	
121	B626	All	1	Elev. Shaft and Gear Assembly	
122	B626B	All	2	Pinion Gear	
125	B629A	All	1	Crank Arm Assembly	
137	B630	All	1	Saddle	
138	B630B	All	1	Stop Block Assembly	
139	B630E	All	1	Feed Screw Pointer and Shield	
140	B630F	All	1	Saddle Guide (Right)	
141	B630G	All	1	Saddle Guide (Left)	
142	B630K	All	1	Saddle Stop	
143	B630R	All	1	Retainer Wire	
144	B630SF	All	1	Crossfeed Screw	
145	B630SG	All	1	Sleeve For Crossfeed	
147	B630W	All	1	Collar for Crossfeed Screw	
151	B635	All	1	Knee	

B729 TABLE TRANSMISSION ASSEMBLY



Index No.	Part No.	Quan. Req'd.	Description	Price Ea.
1	B629A	1	Crank Arm Ass'ly	
2	B629CA	1	Cluster Gear Ass'ly	
5	B629G	2	Gasket for Cover	
6	B629H	1	Housing	
8	B629L	1	Drive Gear	
10	B629M	2	Bushing	
12	B629Y	1	Stationary Shaft Ass'bly	
15	B729C	1	Cover	
16	B729E	1	Thrust Collar	
17	B729P	1	Cluster Gear Shaft	
18	B729R	1	Plunger	
19	B729S	1	Drive Shaft	

Index No.	Part No.	Quan. Req'd.	Description	Price Ea.
20	B729T	1	Drive Pin	
22	A236	1	Gear for Rack (Spiral)	
22	B236	1	Gear for Rack (Straight)	
24	A630BS	1	Compression Spring	
27		1	No. 2 Woodr. Key (3/32x1/2)	
29		1	1/8 Steel Ball	
31		4	10-32x1/2 Fill. Hd. Mach. Sc.	
33		1	3/8 x 3/4 S.A.E. Hex. Cap Sc.	
35		1	3/8 S.A.E. Hex. Nut (H)	
37		1	3/8 U.S.S. Washer (H)	
41		2	3/8 Rd. Felt 3/8" Long	

COMMERCIAL PARTS FOR GRINDERS

INDEX NO.	Where on machine part is used	Model on which part is used	QUAN. REQ'D.	DESCRIPTION	PRICE EA.
159	Saddle	All	1	5/16 x 5/16 Flat Pt. Bristo Set Sc.	
160	Column	All	1	5/16 x 5/16 Hdls. Set Sc.	
162	Elec. Conn. Panel	All	1	5-40 x 1/4 Rd. Hd. Mach. Sc.	
163	Table Trans.	All	4	10-32 x 1/2 Fill. Hd. Mach. Sc.	
164	Pointer & Shield	All	3	10-32 x 1/2 Oval Hd. Mach. Sc.	
165	Column	All	2	10-32 x 5/8 Oval Hd. Mach. Sc.	
166	Top Table	B600, 02	2	10-32 x 1/2 Flat Hd. Mach. Sc.	
168	Indicator Bracket	All	6	No. 2 x 1/8 S.T. Rd. Hd. Sc.	
169	Bottom Table and Base	All	6	10-32 x 5/8 S.T. Rd. Hd. Sc.	
170	Base	All	4	10-32 x 1/2 S.T. Rd. Hd. Sc.	
173	Elev. Screw	All	1	1/2 S.A.E. Castle Nut	
175	Elec. Conn. Panel	All	6	5-40 Hex Nuts	
176	Column	All	2	5/16 U.S.S. Hex Nut	
178	Feed Screw	All	1	1/2 U.S.S. Jam Nut	
180	Motor Shaft Ex.	All	2	5/16 S.A.E. Jam Nut	
182	Switch	All	1	1/4 x 1/2 U.S.S. Oven Hd. Sc.	
184	2 On Stop Block 2 On Hold Down	All	4	5/16 x 5/8 U.S.S. Hex Cap Sc.	
185	Hold Down	All	1	5/16 x 3/4 U.S.S. Hex Cap Sc.	
186	Saddle Guides	All	10	5/16 x 1 1/4 U.S.S. Hex Cap Sc.	
187	Base	All	1	5/16 x 1" U.S.S. Hex Cap Sc.	
188	Knee and Base	All	2	3/8 x 1 U.S.S. Hex Cap Sc.	
189	Knee and Base	All	2	3/8 x 1 1/4 U.S.S. Hex Cap Sc.	
191	Top Table	B602	2	3/8 x 1 1/2 U.S.S. Hex Cap Sc.	
191	Top Table	B600	2	3/8 x 1 3/4 U.S.S. Hex Cap Sc.	
193	Knee and Link	All	1	5/16 x 1 1/2 U.S.S. Hex Cap Sc.	
195	Wheel Guard	B600 - B603	2	5/16 x 1 1/4 Fill. Hd. Mach. Sc. U.S.S.	
196	Top Table	B600 - B602	1	1/4 x 3/8 Fill. Hd. Mach. Sc. U.S.S.	
197	Rack	All	3	1/4 x 1 1/8 Fill. Hd. Mach. Sc. S.A.E.	
199	Bottom Table	All	4	1/4 x 1 S.A.E. Hex Cap Sc.	
200	Table Trans.	All	1	3/8 x 3/4 S.A.E. Hex Cap Sc.	
201	Motor Saddle	All	1	5/16 x 2 1/4 S.A.E. Hex Cap Sc.	
205	Elev. Screw	All	1	1/8 x 1 Cotter Key	
207	Top Table	B600 - B603	2	1/8 Pipe Plug	
208	Table	B603	1	1/8 Street "L"	
209	Column	All	2	5/16 S.A.E. Washer	
211	Saddle	All	1	1/2 Lock Washer	
212	Top Table	B600 - B602	1	1/4 Lock Washer	
213	Saddle	All	10	5/16 Lock Washer	
214	Top Table	All	2	3/8 Lock Washer	
217	Saddle	All	1	203 Bearing	
218	Base and Tables	All	5	501 Beaded Drive Oil Cup	
219	Table	B603	2	1218 Angle Drive Oil Cup	
220	Wet Wheel Guard	B600 - B603	2	6845 Shut Off Cock	
222	Elec. Conn. Panel	All	2	7557 Female Flush Base	
223	Elec. Conn. Panel	All	2	7572 - 3 Wire Cap	
224	Elec. Conn. Panel	All	1	7808 Flush Base	
225	Elec. Conn. Panel	All	1	9409 Body	
227	Motor	All	1	A127L Light Fixture	
228	Switch	All	1	A290S Reversing Switch	
229	Base	All	1	A605BP Indicator Plate	
232	Motor	All	1	No. 9Z N.H. Adjusting Spring	
233	Motor	All	2	77504 Ball Bearing (G. E. Motor)	
233	Motor	All	2	87016 Ball Bearing (Marathon Motor)	
234	Motor	All	1	Starter Switch (GE No. 5826947AK3C)	
234	Motor	All	1	Starter Switch (Marathon S1425)	

FIXTURES AND ACCESSORIES

Part No.	Quan. Req.	DESCRIPTION	PRICE EA
----------	------------	-------------	----------

A239 Center Gauge

A239B	1	Center Gauge Base	
A239H	1	Centering Head	
A239P	1	Centering Point (H)	
A239S	1	Shaft	
A239T	2	Thumb Screw (H)	
	1	10-32 x 3/8" Self Tap Rd. Hd. Sc.	
	1	3/16" Lock Washer (Lock Burred)	

A240 Universal Tooth Rest

A240A	1	Tooth Rest Cross Arm	
A240C	1	Screw	
A240D	1	Graduated Nut	
A240E	1	Bottom Nut	
A240F	2	Tooth Rest Blade	
A240R	1	Tooth Rest Blade	
A240H	1	Tooth Rest Swivel Block (Th'd)	
A240I	1	Tooth Rest Swivel Block (Plain)	
A240S	1	Tooth Rest Stem	
B240B	1	Tooth Rest Base	
	2	10-32 x 1/4" Rd. Hd. Mach. Sc. (H)	
	2	3/16" x 1/2" U.S.S. Cap Screw (Ft. Pt.)	
	1	3/16" x 1 1/4" U.S.S. Cap Screw (H)	
	2	3/16" x 1/2" U.S.S. Cap Screw (H)	
	1	3/8" Lock Washer (Lock Burred)	
	1	3/16" Lock Washer (Lock Burred)	
	1	3/16" S.A.E. Washer	

A261G Spring Center

A261GC	1	Center	
A261GH	1	Housing	
A261GK	1	Knob	
A261GS	1	Spring	
	1	1/4" S.A.E. Nut	

A618 Raising Blocks

A618C	2	Raising Block	5.50
A623	4	T-Slot Block	.20
A658	3	T-Slot Bolt (3/8" x 2 3/8")	.60
	4	6-32 x 3/8" S.T.R.H. Sc.	.05

Part No.	Quan. Req.	DESCRIPTION	PRICE EA
----------	------------	-------------	----------

A620 Universal Head Stock

A250C	1	Barrel	
A250F	1	Center	
A619	1	Locking Screw (3/8" N.C. Th'd)	
A620C	1	Base	
A620S	1	Swivel	
A620T	1	Thumb Screw	
A622	1	Clamp Bar Body	
A622C	1	Collar for Thumb Screw	
A622S	2	Spring	
B675	1	Lock Screw	
	3	3/16" x 3/16" Bristo Screw Set (Fl. Pt.)	
	1	3/8" x 7/8" U.S.S. Cap Sc. (H)	
	2	3/8" S.A.E. Washer (H)	
	2	3/8" Lock Washer (Lock Burred)	
	2	10-32 x 1/2" Fill. Hd. Mach. Sc.	

A632 Motor Head Assembly

A121W	1	Spacer Washer	
A237L	1	Light Fixture	
A290S	1	Reversing Switch	
A290SC	1	Box With Bracket	
A624F	2	Keyed Washer	
A638R	1	Electrical Power Wire (28" No. 18-3 Cond.)	
A723	1	GE Motor (Specify H.P. and Voltage when asking for quotation)	
A736A	1	Shaft Extension	
A736S	1	Draw Bolt	
B608	1	Motor Saddle Assembly	
	1	1/4-20 x 1/2" Oven Hd. Mach. Sc.	
	1	3/16" x 2-1/4" S.A.E. Hex Cap Sc.	
	2	3/16" S.A.E. Hex Jam Nut	
	2	3/16" U.S.S. Hex Nut (H)	
	2	3/16" S.A.E. Washer (H)	

A642 Sensitive Work Head

A183B	1	Thumb Screw	
A619	1	Lock Screw	
A620B	1	Head Stock Barrel	
A620C	1	Base	
A620S	1	Swivel	
A622	1	Clamp Bar Body	
A622C	1	Collar for Thumb Screw	
A622S	2	Spring	
A642A	1	Arbor (3/8" unless otherwise specified)	
or			
A642C	1	Collet (3/8" unless otherwise specified)	
A642G	1	Body	
A642H	1	Index Collar	
A642K	1	Index Disc (24 div.)	
	1	3/8" x 7/8" U.S.S. Hex. Cap Sc. (H)	
	2	10-32 x 3/8" Rd. Hd. Scr. (H)	
	5	3/16" x 3/16" Flat Pt. Bristo Set Sc.	
	2	3/8" S.A.E. Washer (H)	
	1	3/16" x 1 1/4" U.S.S. Fill. Hd. Cap Sc.	
	2	3/8" Lock Washer (Burred)	
	2	202KLL3 Fafnir Bearing	

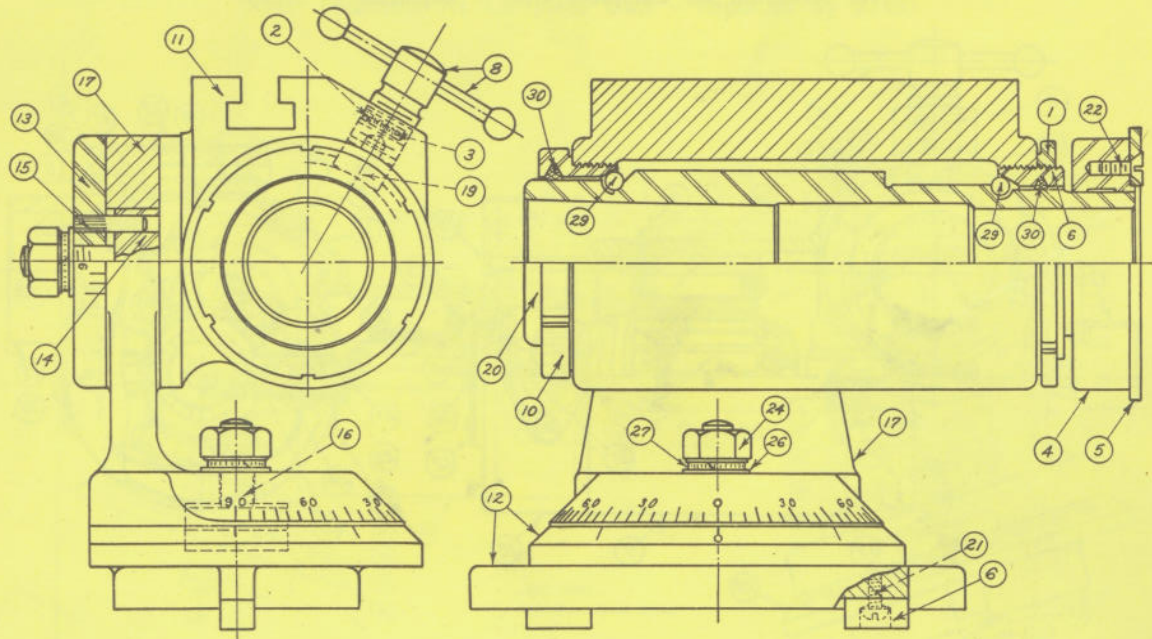
(Continued on page 7)

Part No.	Quan. Req.	DESCRIPTION	PRICE EA.	Part No.	Quan. Req.	DESCRIPTION	PRICE EA.
Accessories For A642 Work Head				B260 "V" Work Holding Fixture			
A642A		Arbors for Holding Small Hobs and Milling Cutters, (sizes $\frac{3}{16}$, $\frac{1}{4}$, $\frac{5}{16}$, $\frac{3}{8}$, and $\frac{1}{2}$ inch) each		A239T	1	Knurled Thumb Screw	
A642C		Collets for holding small end mills with round straight shanks (sizes $\frac{3}{16}$, $\frac{1}{4}$, $\frac{5}{16}$, $\frac{3}{8}$, and $\frac{1}{2}$ inch) each		A260A	1	Arm for Stop	
A642H		Index Collar for A642A Arbors and A642C Collets		A260B	1	Center Stop Block Assembly	
A642K		Index Discs for A642H Collar and A301 Universal Chuck. 4, 6, 8, 18, 20, 24, 28, 32, and 36 divisions, ea.		A260C	1	V-Swivel	
A642P		Index Collar for A642 Small Sensitive Work Head, B642 Large Sensitive Work Head, and B685 Radial Grinding Fixture		A260D	1	Shaft for Center Stop Block	
A642R		Index Discs for A642P Collar (Replaced by B642R Discs)		A260H	1	Hold-Down for V-Rest	
A642S		No. 11 B & S Taper Sleeves, for A642 Small Sensitive Work Head		A260S	1	Shaft for Hold-Down	
				A619	1	Lock Screw	
				A620C	1	Base	
				A620S	1	Swivel for Base	
				A620T	1	Thumb Sc.	
					1	$\frac{3}{8}$ x $\frac{3}{8}$ U.S.S. Hex Cap Sc. (H)	
					2	$\frac{3}{16}$ x $\frac{3}{16}$ Bristo Set Sc. Flat Pt.	
					2	$\frac{3}{8}$ S.A.E. Washer (H)	
					2	$\frac{3}{8}$ Spring Washer (H)	
				B269 Radial Diamond Dresser			
				A269B	1	Base	
				A269H	1	Handle	
				A269N	1	Adjusting Nut	
				B269A	1	Swinging Arm	
				P117K	1	Knurled Thumb Screw	
				P119K	1	Knurled Thumb Screw	
				P176D	1	Diamond Screw	
					1	$\frac{1}{4}$ U.S.S. Hex Nut (H)	
					1	10-24 x $\frac{3}{16}$ Flat Pt. Hdls. Set Sc.	
				B621 Quick Release Spring Center Tail Stock			
				A620T	1	Thumb Screw	
				A622	1	Clamp Bar Body Assembly	
				A622C	1	Collar	
				A622S	2	Spring	
				B621B	1	Body for Spring Center	
				B621C	1	Center Assembly	
				B621D	1	Cap	
				B621L	1	Lever	
				B621S	1	Compression Spring	
				B675	1	Lock Screw	
					1	12 - 24 x $\frac{1}{2}$ " Fill. Hd. Mach. Sc.	
					1	$\frac{3}{16}$ " S.A.E. Washer	
				B627 Plain Tooth Rest			
				B240B	1	Base	
				B627B	1	Blade	
				B627N	1	Graduated Nut	
				B627S	1	Screw	
				B627P	1	Plug	
					1	10-32 x $\frac{3}{16}$ Rd. Hd. Mach. Sc. (H)	
					1	$\frac{3}{16}$ x $\frac{3}{16}$ Br. Set Sc.	
				B639 "V" Blocks			
				A183B	2	$\frac{3}{16}$ x $\frac{3}{4}$ " U.S.S. Thumb Sc.	
				A262C	2	Clamp Bracket	
				A616B	1	"V" Block (Left)	
				A617B	1	"V" Block (Right)	
				B640 High Speed Grinding Attachment			
				A640A	1	HIGH SPEED QUILL ASSEMBLY	
						Consists of the following parts:	
				A640AA	1	Spacer Sleeve ($\frac{3}{8}$ L.)	
				A640AB	1	Body	
				A640AC	2	Cap	
				A640AD	1	Spindle	
				A640AE	2	Wick ($\frac{3}{16}$ x $2\frac{3}{4}$ L)	
				A640AF	1	Felt ($\frac{1}{16}$ x $1\frac{1}{8}$ x $3\frac{1}{8}$)	
				A640AG	1	Spacer Sleeve ($\frac{1}{32}$ L)	
						(Continued on page 8)	
A645 Tilting Table Attachment							
A267LT	2	$\frac{3}{16}$ " x 6" Copper Tube					
A267SC	1	Cover for Wet Wheel Guard					
A268T	1	Tool Bit Holder ($\frac{3}{16}$ " to $\frac{3}{8}$ ")					
A645T	1	Tilting Table Assembly					
A646	1	Protractor (without Diamond) (For parts look under A646 Protractor below.)					
A767S	1	Small Wet Wheel Guard					
A6845	2	Weatherhead Comp. Shut-off Cock					
	4	$\frac{5}{16}$ " x $\frac{3}{16}$ " Headless Set Screw (Ft. Pt.)					
	1	$\frac{1}{2}$ " - 13 R. H. Jam Nut					
	1	6 x $1\frac{1}{2}$ " x $\frac{3}{8}$ " Silicon Carbide Recessed Wheel					
				A646 Protractor			
A646A	1	Bushing					
A646B	1	Slide Bar					
A646C	1	Casting					
A646N	1	Thumb Nut					
A646S	1	Stud					
P176B	1	Brass Plug					
P176D	1	Diamond Screw Only					
P176S	1	Spring					
	1	12-24 x $\frac{3}{4}$ " Fill. Hd. Mach. Sc.					
	2	$\frac{3}{16}$ " S.A.E. Washer					
	1	Lock Washer $\frac{3}{8}$ " (Lock Burred)					
				B240 Universal Tooth Rest			
B240A	1	Cross Arm					
B240C	1	Base					
B240D	2	Blade					
B240P	1	Swivel Block (Plain)					
B240R	1	Rocker Ass'ly					
B240S	1	Shaft Ass'ly					
B240T	1	Swivel Block (Threaded)					
	3	$\frac{3}{8}$ x $\frac{3}{8}$ U.S.S. Hex Socket Flat Point Set Screw					
	1	$\frac{1}{4}$ x $\frac{3}{4}$ S.A.E. Hex Socket Cap Screw					
	1	10-32 x $\frac{1}{4}$ Rd. Hd. Sc. (H)					
	1	10-32 x $\frac{3}{16}$ Rd. Hd. Sc. (H)					
	1	$\frac{3}{8}$ x $1\frac{1}{2}$ U.S.S. Cap Sc. (H)					
	1	$\frac{3}{16}$ U.S.S. Washer (H)					
	1	$\frac{3}{8}$ Lock Washer (Lock Burred)					
	1	$\frac{3}{16}$ Hex Wrench					

K. O. LEE COMPANY

Part No.	Quan. Req.	DESCRIPTION	PRICE EA.	Part No.	Quan. Req.	DESCRIPTION	PRICE EA.
(Continued from page 7)							
A640AW	1	Adjusting Washer		B641H	1	Hand Wheel	
	1	10-24 x 3/8 Hdls. Set Sc.		B641S	1	Draw Sleeve	
	1	5 Z Norma Hoffman Adjusting Spring			2	3/8 x 3/8 Cone Pt. Br. Set Sc.	
	2	200WI Fafnir Bearing		Available Collets For B641			
		or		B641C		Collets for B641 Collet Fixture. Available sizes: 3/16" to 1/2" by 64ths, 1/32" to 1" by 32nds, each	
	2	MM200WI-CR Fafnir Bearing (Special Equipment)		B644E Six Inch 4 Jaw Independent Chuck			
	2	Yarn (2' long)		B643R	1	Flanged Arbor (No. 11 B. and S. Taper)	
		High Grade Spindle Oil		B644	1	6" Four Jaw Independ't Chuck	
A640B	1	Bracket for Quill			4	3/8" x 1/2" U.S.S. Fill. Hd. Cap Sc.	
A640BK	1	Key for Bracket		B649 to B653 Cutter and Hob Grinding Arbors			
A640C	1	Wheel Arbor (10-32 Th'd.)		B648D		Index Discs to fit all Cutter and Hob Grinding Arbors. 30, 32, 34, 36, 38, 40, 42, 44, 48, 52, 54, 56, Divisions	
A640E	1	1 1/2" Wheel Flange for Straight Wheel				Special Index Discs with any number Divisions can be furnished on request	
A640F	1	1/8" Collet Chuck		B649 3/4" Cutter and Hob Grinding Arbor Assembly			
B698	1	6" Pulley for Motor		B649A	1	Arbor	
B697	1	4 1/2" Pulley for Motor		B649C	1	Sleeve with Shoulder	
A640H3	1	2 1/2" Pulley for Quill		B649N	2	Nuts	
A640H4	1	1 1/2" Pulley for Quill		B649S	2	Sleeve 1/2" long	
A640H5	1	1" Pulley for Quill		B649S	1	Sleeve 1" long	
A640H6	1	3/4" Pulley for Quill		B649S	2	Sleeve 1 1/2" long	
A640HB	1	Spacer Bushing for Quill Pulley		B649W	1	Washer for Disc	
A640J	1	Wheel Arbor with 3/8" Shank and Flanges		B650 3/4" Cutter and Hob Grinding Arbor Assembly			
A640N	1	Wheel Arbor (1/8" - 40 Th'd.)		B650A	1	Arbor	
A640P	1	Wheel Arbor (1/4" - 28 Th'd.)		B650C	1	Sleeve with Shoulder	
B640G	1	3" Wheel Guard		B650N	2	Nut	
B640K	1	DIAMOND DRESSER WITH DIAMOND		B650S	2	Sleeve 1/2" long	
		Consists of the following parts:		B650S	1	Sleeve 1" long	
A173	1	Diamond Nib		B650S	2	Sleeve 1 3/4" long	
A269B	1	Base		B650W	1	Washer for Disc	
B640KC	1	Column		B651 1" Cutter and Hob Grinding Arbor Assembly			
P119K	1	Knurled Thumb Screw		B651A	1	Arbor	
R56	1	5/16" x 5/8" Flat Pt. Bristo Set Sc.		B651C	1	Sleeve with Shoulder	
	1	5/16" Bristo Wrench		B651N	2	Nut	
B640R	1	Wheel Flange with 5/8" Shldr.		B651S	1	Sleeve 1/2" long	
B640W	1	1/4" Sq. Socket Wrench		B651S	2	Sleeve 1 1/2" long	
	1	1/2" Hex Wrench (Measure Across Flats)		B651S	2	Sleeve 2" long	
	2	7/8" x 26" Belt		B652 1 1/4" Cutter and Hob Grinding Arbor Assembly			
PV2FF60	1	2" x 3/8" x 3/8" Straight Wheel		B652A	1	Arbor	
PV3FF60	1	3" x 3/8" x 3/8" Straight Wheel		B652N	2	Nut	
A32	1	1" x 3/8" x 1/4" - 28 Cup Wheel		B652S	2	Sleeve 1/2" long	
A37	1	1 1/4" x 1/4" x 1/4" - 28 Special Shaped Wheel		B652S	1	Sleeve 1 1/2" long	
W162	1	1/4" x 3/8" x 1/8" Mtd. Wheel (1/8" - 40 Th'd.)		B652S	2	Sleeve 2" long	
W163	1	1/4" x 1/2" x 1/8" Mtd. Wheel (Plain)		B653 1 1/2" Cutter and Hob Grinding Arbor Assembly			
W184	1	1/2" x 3/8" x 1/8" Mtd. Wheel (1/8" - 40 Th'd.)		B653A	1	Arbor	
W185	1	1/2" x 1/2" x 1/8" Mtd. Wheel (1/8" - 40 Th'd.)		B653N	1	Nut	
W203	1	3/4" x 1/2" x 3/16" Mtd. Wheel (10-32 Th'd.)		B652N	1	Nut	
W215	1	1" x 1/8" x 3/16" Mtd. Wheel (10-32 Th'd.)		B652S	1	Sleeve (1/2" long)	
W216	1	1" x 1/4" x 3/16" Mtd. Wheel (10-32 Th'd.)		B653S	1	Sleeve (1" long)	
	2	3/8" S.A.E. Jam Nuts (H) for Quill Shaft		B653S	1	Sleeve (1 1/2" long)	
	2	10-32 x 5/8" Rd. Hd. Mach. Sc. For Bracket Key		B653S	1	Sleeve (3" long)	
	2	3/8" S.A.E. Washer For Bracket Key		B670 Fixture for Grinding Spiral and Helical Hobs and Cutters			
B641 Collet Fixture and Collets							
B641A	1	Collet Adapter With Key		A659	1	T-Slot Bolt 3/8 x 1 1/8	
				B670R	1	Tooth Rest Assembly	
				B670T	1	T-Slot Block	
					4	3/8 x 1 1/4 U.S.S. Socket Head Cap Sc. (Hex Type)	
					1	1/2 Hex Wrench	

B642 Large Sensitive Work Head



Index No.	Part No.	Quan. Req.	Description	Price Ea.
1	A54L	1	Lock Ring
2	A619D	1	Plug
3	A630BS	1	Compression Spring
4	A642P	1	Index Collar
5	B642R	1	Index Disc (Standard)
6	A623	2	T Slot Block
6	A643A	1	Adjusting Race
8	A643D	1	Spindle Lock Sc. Assbly.
10	A643M	1	Front Race
11	B620B	1	Housing
12	B620C	1	Base
13	B620D	1	Back Plate

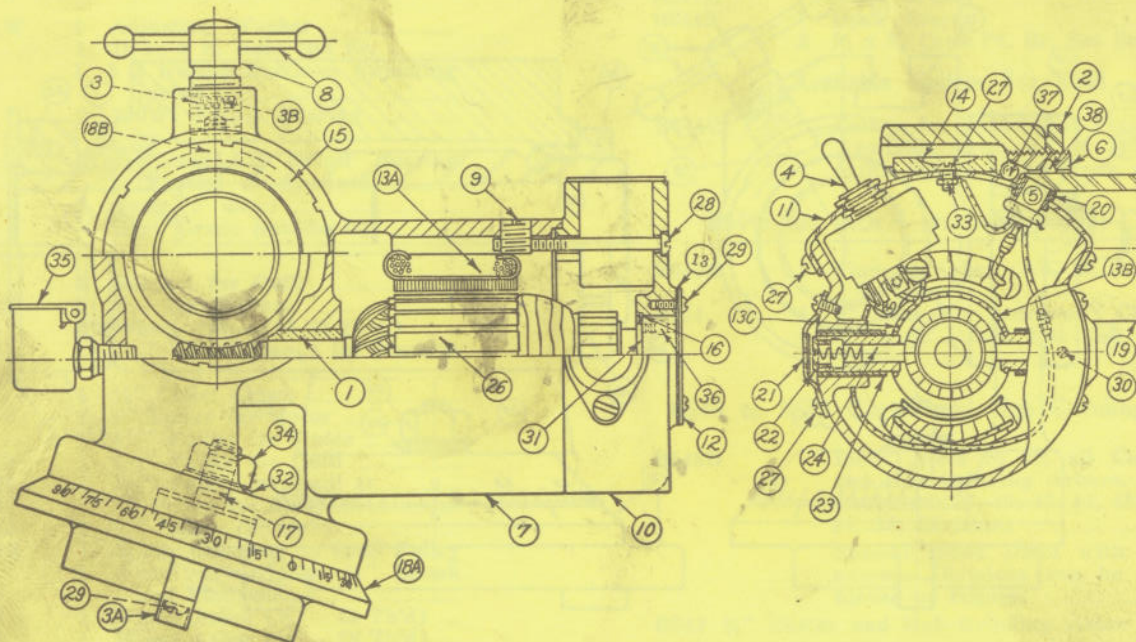
Index No.	Part No.	Quan. Req.	Description	Price Ea.
14	B620G	1	Swivel Stud
15	B620P	1	Knurled Pin
16	B620R	1	Base Stud
17	B620S	1	Swivel
19	B643DP	1	Lock Pad
20	B643S	1	Spindle
21		2	6 - 32 x 3/8 S.T.R.H. Sc.
22		2	10-32 x 3/8 FL Hd. Mach. Sc.
24		2	3/8 U.S.S. Hex Nut (H)
26		2	3/8 S.A.E. Washer (H)
27		2	3/8 Lock Washer
29		53	3/32 Steel Ball (Set)
30		15	15" 3/16 felt

ACCESSORIES FOR B642 LARGE SENSITIVE WORK HEAD

<p>B641 Collet Fixture for B643, B693 and B743 Motor Driven Work Heads, B642 Sensitive Work Head and B685 Radial Grind'g Fixture, less Collets</p> <p>B641C Collets for B641 Collet Fixture. Available sizes: 3/16" to 1/2" by 64ths, 1/32" to 1" by 32nds, each</p> <p>B641K Straight Sleeves to be used in A642 and B642 Sensitive Work Heads, B643, B693 and B743 Motor Driven Work Heads, and B685 Radial Grinding Fixture. Available sizes: 1 1/16", 1 1/8", 1 3/16", 1 1/4", each</p> <p>B642K No. 11 B. & S. Adapter with standard Milling Machine Taper Socket for holding B. & S. Cam Lock Tapers. Available in Tapers Nos. 10-</p>	<p>20-30. For use in B642 Sensitive Work Head, B643, B693 and B743 Motor Driven Work Heads and B685 Radial Grinding Fixture, each</p> <p>B642T Taper Sleeves for A642 Sensitive Work Head with A642S Sleeve, B642 Sensitive Work Head, B643, B693 and B743 Motor Driven Work Heads, and B685 Radial Grinding Fixture. Available sizes: Morse 1, 2, 3, and 4; B & S 5, 7, 8, 9, and 10, each</p> <p>B644E Six Inch Independent 4-Jaw Chuck mounted on No. 11 B & S Arbor, for use in B642 Sensitive Work Head, B643, B693 and B743 Motor Driven Work Heads, and B685 Radial Grinding Fixture</p>
--	---

B643 Motor Driven Work Head

(Not Available As Complete Unit - Replaced By B743)



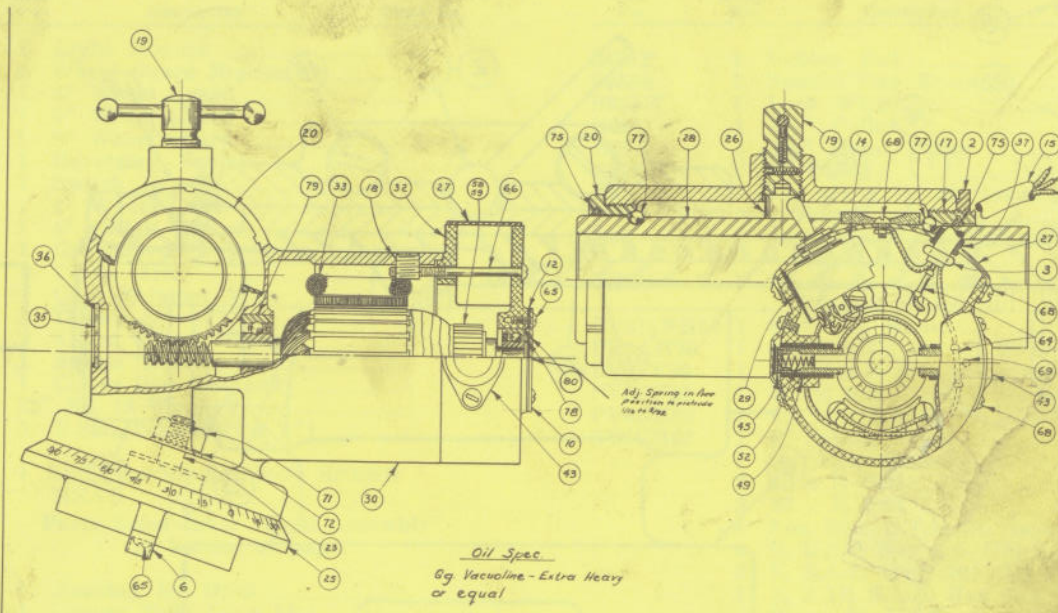
Index No.	Part No.	Quan. Req.	Description	Price Ea.	Index No.	Part No.	Quan. Req.	Description	Price Ea.
1	A50B	1	Bushing		18B	B643DP	1	Lock Pad	
2	A54L	1	Lock Ring		19	B643S	1	Spindle	
3	A619D	1	Plug		20	P211G	1	Grommet	
3A	A623	2	T-Slot Block		21	P212H	2	Brush Holder Shield Assembly	
3B	A630BS	1	Compression Spring		22	P3949	2	Brush Plug	
4	A638	1	Reversing Switch		23	P8545	2	Brush Holder	
5	A638X	1	No. 18-3 Conductor Wire, 42"		24	R3838	2	Brush and Spring Ass'ly	
6	A643A	1	Adjusting Race		26	SP5026	1	Armature (Double Thread; 230 Volts)	
7	A643C	1	Housing		26	SP5300	1	Armature (Double Thread; 115 Volts)	
8	A643D	1	Spindle Lock Sc. Ass'ly		27		7	8-32 x 1/4 Rd. Hd. Sc.	
9	A643CP	2	Threaded Insert		28		2	8-32 x 2 1/4 Rd. Hd. Sc.	
10	A643E	1	End Shield		29		7	6-32 x 3/8 S.T. Rd. Hd. Sc.	
11	A643EB	1	Switch Bracket		30		2	10-24 x 3/8 Hdls. Set Sc.	
12	A643EC	1	Bearing Cover		31		1	1/4 U.S.S. Washer	
13	A643EG	1	Gasket for Bearing Cover		32		1	3/8 S.A.E. Washer	
13A	B643F	1	Field (115 Volt)		33		1	8-32 Hex Nut	
13A	B643F	1	Field (230 Volt)		34		1	3/8 U.S.S. Hex Nut (H)	
13B	B643FL	1	Wire (Brush to Switch - 5" long)		35		1	Steel Oil Cup No. 820	
13C	B643FS	1	Wire (Brush to Switch - 3 3/4" long)		36		1	38 KVT Fafnir Bearing	
14	A643G	1	Gear		37		53	1/32" Steel Ball (Set)	
15	A643M	1	Front Race		38		15"	3/16 Felt Packing	
16	A643W	1	Retainer Wire for Bearing		14 & 19	B643GS	1	2 oz. Bottle Canopus D-Oil	
17	B620R	1	Base Stud					Gear and Spindle Assembly	
18A	B643B	1	Graduated Base						

ACCESSORIES FOR B643 MOTOR DRIVEN WORK HEAD

B641	Collet Fixture for B643, B693 and B743 Motor Driven Work Heads, B642 Sensitive Work Head and B685 Radial Grind'g Fixture, less Collets for B641 Collet Fixture.	20-30. For use in B642 Sensitive Work Head, B643, B693 and B743 Motor Driven Work Heads and B685 Radial Grinding Fixture, each	
B641C	Available sizes: 3/16" to 1/2" by 64ths, 1/32" to 1" by 32nds, each	B642T	Taper Sleeves for A642 Sensitive Work Head with A642S Sleeve, B642 Sensitive Work Head, B643, B693 and B743 Motor Driven Work Heads, and B685 Radial Grinding Fixture. Available sizes: Morse 1, 2, 3, and 4; B & S 5, 7, 8, 9, and 10, each
B641K	Straight Sleeves to be used in A642 and B642 Sensitive Work Heads, B643, B693 and B743 Motor Driven Work Heads, and B685 Radial Grinding Fixture. Available sizes: 1 1/16", 1 1/8", 1 1/4", each	B644E	Six Inch Independent 4-Jaw Chuck mounted on No. 11 B & S Arbor, for use in B642 Sensitive Work Head, B643, B693 and B743 Motor Driven Work Heads, and B685 Radial Grinding Fixture
B642K	No. 11 B. & S. Adapter with standard Milling Machine Taper Socket for holding B. & S. Cam Lock Tapers. Available in Tapers Nos. 10-		

B693 - Motor Driven Work Head

(Not Available As Complete Unit - Replaced By B743)

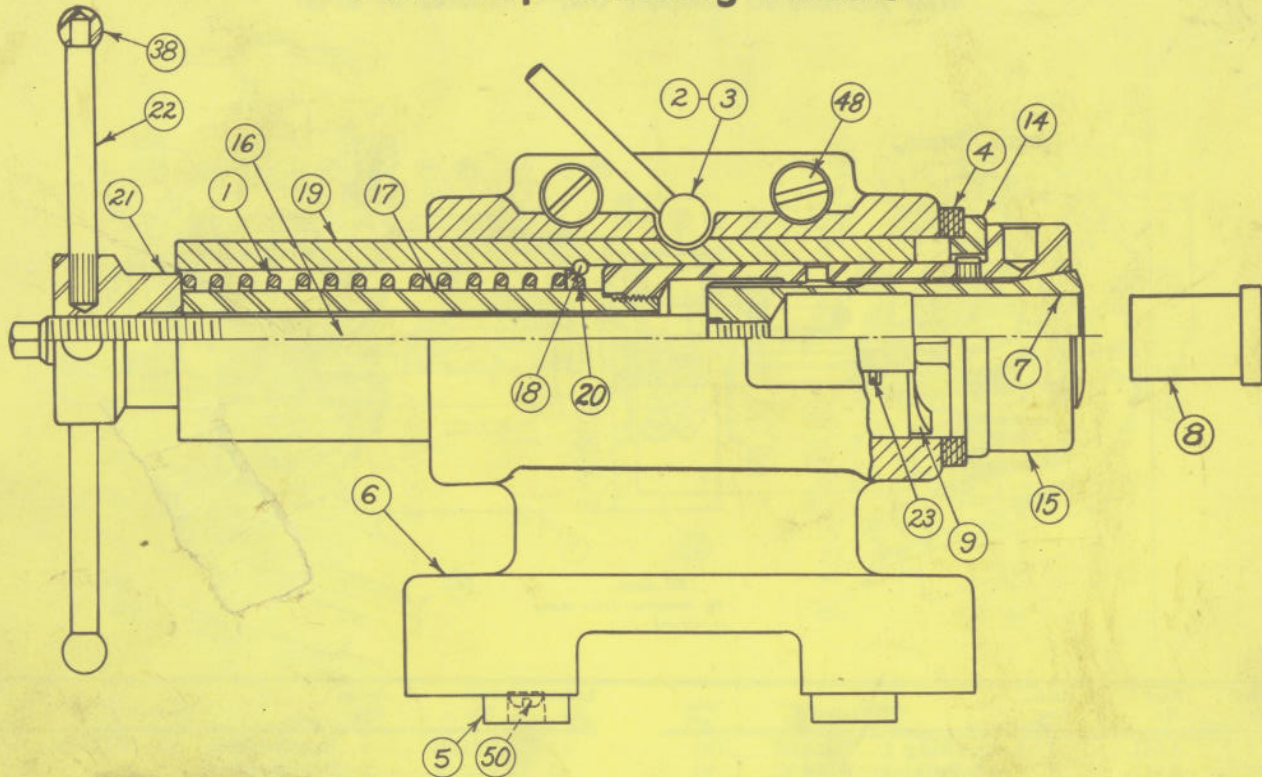


Index No.	Part No.	Quan. Req.	Description	Index No.	Part No.	Quan. Req.	Description
2	A54L	1	Lock Ring	43	P212H	2	Brush Holder Shield Assbly
3	A612	1	Cord Retainer Wire	45	P3949	2	Brush Plug
4	A619D	1	Plug	49	P8545	2	Brush Holder
6	A623	2	T-Slot Block	52	R3838	2	Brush & Spring Assbly
	A630BS	1	Compression Spring	54	KO-4	1	Plate
10	A643MB	1	Bearing Cover	55	KO-1	1	Plate
12	A634MG	1	Gasket	58	408-0356-	1	
14	A638	1	Reversing Switch	270			Armature (115V) 7/16
15	A638X	1	Electrical Power Wire	59	408-0356-	1	
17	A643A	1	Adjusting Race	278			Armature (230V) 7/16
18	A643CP	2	Threaded Insert	408-0405-	1		
19	A643D	1	Spindle Lock Screw Assbly	278			Armature (220V) 15/32
20	A643M	1	Front Race	408-0405-	1		
23	B620R	1	Base Stud	270			Armature (110V) 15/32
25	B643B	1	Graduated Base	64	34070	2	Butt Connector
26	B643DP	1	Locking Pad	65	8-32x1/4	6	Rd. Hd. Screw
27	B643EB	1	Switch Bracket	66	8-32x2 1/4	2	Rd. Hd. Screw
28	B643GS	1	Gear & Spindle Assbly	68	6-32x3/8	7	St. Rd. Hd. Screw
29	B643L	1	Vellum Insulation	69	10-24x3/16	2	Hdls. Set Screw
30	B693C	1	Housing	71	3/8 U.S.S.	1	Hex Nut (H)
28	B693GS	1	Gear & Spindle Assbly	72	3/8 S.A.E.	1	Washer (H)
32	B693E	1	End Shield	75	3/8	15"	Felt Packing
33	B693F	1	Field	77	7/32	53	Steel Balls
35	K143HL	1	Oil Level Gauge	78	7009	1	Ball Bearing (Norma)
36	K143HR	1	Retainer Ring	79	7012	1	Ball Bearing (Norma)
37	P211G	1	Grommet	80	6Z	1	Adjusting Spring (Norma)

ACCESSORIES FOR B693 MOTOR DRIVEN WORK HEAD

B641	Collet Fixture for B643, B693 and B743 Motor Driven Work Heads, B642 Sensitive Work Head and B685 Radial Grind'g Fixture, less Collets		20-30. For use in B642 Sensitive Work Head, B643, B693 and B743 Motor Driven Work Heads and B685 Radial Grinding Fixture, each
B641C	Collets for B641 Collet Fixture. Available sizes: 3/16" to 1/2" by 64ths, 1/32" to 1" by 32nds, each		B642T Taper Sleeves for A642S Sensitive Work Head with A642S Sleeve, B642 Sensitive Work Head, B643, B693 and B743 Motor Driven Work Heads, and B685 Radial Grinding Fixture. Available sizes: Morse 1, 2, 3, and 4; B & S 5, 7, 8, 9, and 10, each
B641K	Straight Sleeves to be used in A642 and B642 Sensitive Work Heads, B643, B693 and B743 Motor Driven Work Heads, and B685 Radial Grinding Fixture. Available sizes: 1 1/8", 1 1/4", 1 1/2", each		B644E Six Inch Independent 4-Jaw Chuck mounted on No. 11 B & S Arbor, for use in B642 Sensitive Work Head, B643, B693 and B743 Motor Driven Work Heads, and B685 Radial Grinding Fixture
B642K	No. 11 B. & S. Adapter with standard Milling Machine Taper Socket for holding B. & S. Cam Lock Tapers. Available in Tapers Nos. 10-		

B647 Tap Grinding Fixture



Index No.	Part No.	Quan. Req.	Description	Price Each
1	A261F	1	Coil Spring	
2	A261L	1	Lock Screw Assembly	
3	A261LN	1	Lock Nut	
4	A261W	1	Fiber Thrust Washer	
5	A623	2	T-Slot Block	
6	A647B	1	Body	
7	B647A	1	1/8" Collet	
8	B647B	1	Bushing to take Nos. 0 thru 6, 7 and 8, 9, and 10, 12; sizes 1/4, 3/8, 1/2, 5/8, 3/4, and 7/8 inch taps	
9	B647CA	1	Rt. Hd. Cam (A) (Taps up to 3/8")	
9	B647CB	1	Rt. Hd. Cam (B) (Taps 3/8 to 1/2")	
9	B647CC	1	Rt. Hd. Cam (C) (Taps over 1/2")	
9	B647CS	1	Rt. Hd. Lift Cam - Spec. for 2 flute taps	

Index No.	Part No.	Quan. Req.	Description	Price Each
14	B647D2	1	Two Flute Index Disc	
14	B647D3	1	Three Flute Index Disc	
14	B647D4	1	Four Flute Index Disc	
15	B647K	1	Collet Adapter Assembly	
16	B647L	1	Draw Bolt	
17	B647M	1	Draw Bolt Tube	
18	B647R	1	Lock Ring	
19	B647S	1	Spindle	
20	B647T	1	Thrust Collar	
21	B647WH	1	Hub	
22	B647WS	4	Spoke for Hub	
23	B647Y	1	Retainer Pin for Cam	
38	P173CB	4	Ball for Spoke	
	A659	2	T-Slot Bolt (3/8" x 1 1/8")	
48		2	1/4 x 3/8 S.A.E. Fill. Hd. Mach. Sc.	
50		2	6-32 x 3/8 S.T. Rd. Hd. Sc.	

Accessories for B647 Tap Grinding Fixture

Index No.	Part No.	Quan. Req.	Description	Price Each
9	B647CAL		L. Hand Lift Cam (Taps up to 3/8")	
9	B647CBL		L. Hand Lift Cam (Taps 3/8" to 1/2")	
9	B647CCL		Left Hand Lift Cam (Taps over 1/2")	
9	B647CSL		Left Hand Lift Cam - Spec. for 2 flute taps	
14	B647D	5 and 6	Fluted Index Discs	
7	B647E		.800" Collet to fit 1" Tap	

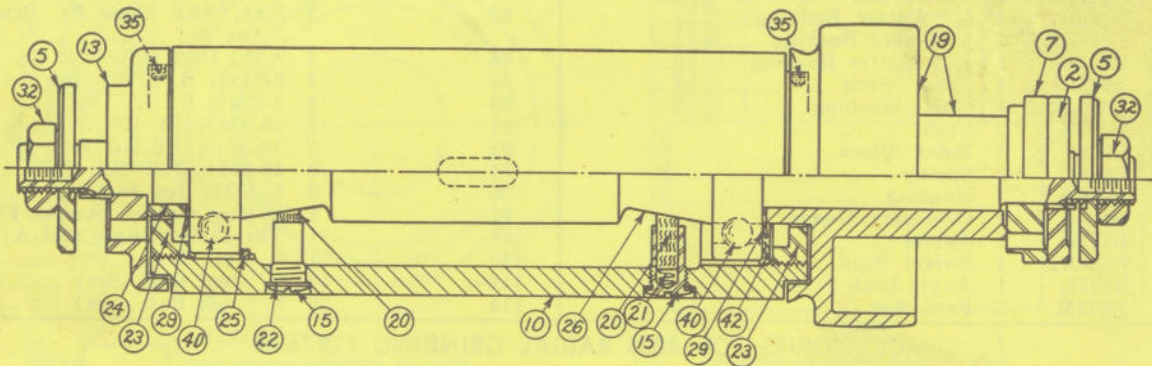
Index No.	Part No.	Quan. Req.	Description	Price Each
8	B647F		Bushings for B647E Collet to fit 1/8", 3/4" and 7/8" Taps	
8	B647P		Driver for use in B647 Tap Grinding Fixture when grinding large taps	

NOTE: Either A261G Spring Center or B621 "Quick Release" Spring Center Tail Stock must be used with B647P Driver.

B655 Speed Head

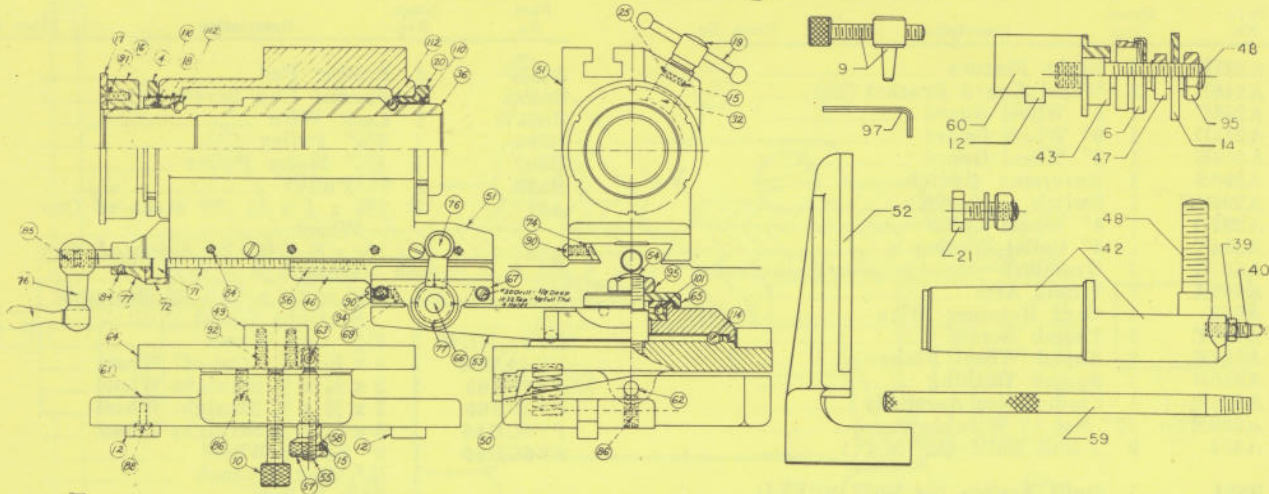
Part No.	Quan. Req.	Description	Price Ea.	Part No.	Quan. Req.	Description	Price Ea.
A237L	1	Light Fixture		B655P	4	Rubber Pad	
A246B	2	Wheel Guard Bracket		B655S	2	Special Cap Screw	
A246C	1	4" Wheel Guard		B655W	1	Lock Wire	
A246D	1	6" Wheel Guard		B696	1	3 3/8" Pulley	
A246E	1	8" Wheel Guard		B697	1	4 1/2" Motor Pulley	
A290S	1	Reversing Switch		B698	1	6" Pulley	
A290SC	1	Switch Box		A31	1	1 3/8 x 1 x 1/4 - 28 Mounted Cup Wheel	
A294D	1	4" Wheel Collet		A36	1	1 5/8 x 3/8 x 1/4 - 28 Mounted Cup Wheel	
A294K	1	4" Collet Washer		W235	1	1 1/2 x 1/4 x 1/4 - 28 Mounted Straight Wheel	
A601G	1	Grommet		CV3 1/2 NH60	1	3 1/2" Cup Wheel	
A609A	1	T-Slot Arm		PR8AM70	1	8 x 3/32 x 1 1/4 Cut-off Wheel	
A612	1	Cord Retainer Wire		PV2FF60	1	2 x 3/8 x 3/8 Straight Wheel	
A620T	3	Thumb Screw		PV3FF60	1	3 x 3/8 x 3/8 Straight Wheel	
A624F	2	Keyed Wheel Flange		PV6GH80	1	6 x 1/2 x 3/8 Straight Wheel	
A625B	1	Spacer Bushing		SV6GH60	1	6" Saucer Wheel	
A625M	1	Clamp Disc Assembly			1	3/32" Hex Wrench	
A638M	32"	No. 18 Wire			2	22 x 7/8 Belt	
A654	3	T-Slot Bolts (3/16" x 1")			2	26 x 7/8 Belt	
B631	1	Quill Ass'ly for B655 SPEED HEAD			1	2 oz. Btle. D.T.E. Lt. Socony Oil	
		Parts listed under "Quill Assembly" at bottom of page.			4	3/16 U.S.S. Hex Nut (H)	
					2	3/16 S.A.E. Hex Nut (H)	
B631B	1	Housing for Quill			1	3/16 x 1 3/8 S.A.E. Hex Cap Sc.	
B631C	1	Copper Tube (1/4 x 1 3/4)			1	3/16 x 7/8 U.S.S. Socket Head Cap Sc.	
B631M	1	Arbor and Flange Assembly			2	3/16 x 1 1/4 U.S.S. Socket Head Cap Sc.	
B631T	1	1 7/8" Pulley			4	3/16 x 1 1/2 U.S.S. Fill. Hd. Cap Sc.	
B631X	1	Cap for Compression Sleeve			1	1/4 - 20 x 1/2 Oven Hd. Sc.	
B631Y	1	Compression Sleeve			2	6 - 32 x 3/8 S.T. Rd. Hd. Sc.	
B655A	2	T-Slot Arm			2	3/16 S.A.E. Washer (H)	
B655B	2	Guide Block			1	Gits Steel Elbow Oil Cup No. 802	
B655D	1	Wet Wheel Guard			6"	3/16 Felt Packing	
B655GE	1	1/2 H.P. Motor Assembly (Std.)					
B655K	1	Clamp					
B655M	1	Motor Saddle					
B655N	1	Name Plate					

B631 Quill Assembly



Index No.	Part No.	Quan. Req.	Description	Price Ea.	Index No.	Part No.	Quan. Req.	Description	Price Ea.
2	A121W	1	Spacing Collar for Thin Wheels		24	B631P	1	Spacer	
5	A624F	2	Keyed Wheel Flange		25	B631R	1	Retainer Ring	
7	A624W	1	Wheel Flange		26	B631S	1	Spindle	
10	B631D	1	Body		29	B631W	2	Oil Throw Ring	
13	B631F	1	Wheel Flange		32		2	3/16 S.A.E. Hex Jam Nut (H)	
15	B631G	2	Wick Holder		35		2	10-24 x 3/16" Hdls. Set Sc.	
19	B631H	1	Pulley		40		2	No. 204WI Fafnir Ball Bearing	
20	B631J	2	Oil Wick		42		1	No. 9Z Adjusting Spring	
21	B631K	2	Spring for Wick						
22	B631L	2	Oil Seal Washer						
23	B631N	2	Lock Nut						

B685 Radial Grinding Fixture



Index No.	Part No.	Quan. Req.	Description	Price Each
4	A54L	1	Lock Ring	
6	A280	1	Friction Collar	
6	A281	1	Friction Collar	
9	A290A	2	Table Adj. Sc. Ass'ly	
10	A290AS	1	Knurled Thumb Screw	
12	A623	2	T-Slot Block	
14	A624F	1	Keyed Wheel Flange	
15	A630BS	1	Compression Spring	
16	A642P	1	Index Collar	
17	B642R	1	Index Disc	
18	A643A	1	Adjusting Race	
19	A643D	1	Spindle Lock Ass'bly	
20	A643M	1	Front Race	
21	A657	2	T-Slot Bolt ($\frac{3}{8} \times 1\frac{1}{2}$)	
25	B629P	1	Plug	
32	B643DP	1	Lock Pad	
36	B643S	1	Spindle	
39	B684N	1	Sp. Nut for Dia. Screw	
40	B684S	1	Diamond Screw	
42	B685A	1	Cutter and Dia. Hold. Arbor	
43	B685B1	1	$\frac{7}{8}$ " Cutter Bushing	
43	B685B2	1	1" Cutter Bushing	
43	B685B3	1	1 $\frac{1}{4}$ " Cutter Bushing	
46	B685C	1	Cross Slide	
47	B685D	1	Guide Bushing	
48	B685E	2	Stud	
49	B685F	1	Index Block	
50	B685G	2	Spring	
51	B685H	1	Housing	
52	B685J	1	Centering Gauge	
53	B685K	1	Swivel	
54	B685KS	1	Swivel Stud	
55	B685L	1	Angle Lock Screw	
56	B685M	2	Feed Nut	

Index No.	Part No.	Quan. Req.	Description	Price Each
21	A658	1	T-slot Bolt ($\frac{3}{8} \times 2\frac{3}{8}$)	
21	A660	1	T-slot Bolt ($\frac{3}{8} \times 1\frac{1}{8}$)	
57	B685N	1	Thumb Nut	
58	B685NP	1	Plug	
59	B685P	1	Handle	
60	B685R	1	Raising Block for Cutters	
61, 62				
& 64	B685TS	1	Table and Saddle Assembly	
63	B685TP	1	Pin	
65	B685V	1	Thrust Collar	
66	B685W	1	Lower Feed Sc. Assembly	
67	B685WB	1	Lower Feed Sc. Bearing	
69	B685WG	1	Gib for Lower Slide	
71	B685X	1	Upper Feed Sc. Assembly	
72	B685XB	1	Upper Feed Sc. Bearing	
74	B685XG	1	Gib for Upper Slide	
76	B685Y	2	Ball Crank	
77	B685Z	2	Index Collar	
84		22	10-24x $\frac{3}{16}$ Socket Set Sc. (Hex Type)	
85		2	$\frac{3}{8} \times \frac{3}{8}$ SAE Cone Pt. Bristol Set Sc.	
86		4	$\frac{3}{16} \times \frac{3}{16}$ USS Hlds. Set Sc.	
88		2	6-32x $\frac{3}{8}$ S. T. Rd. Hd. Sc.	
90		4	8-32x $\frac{1}{2}$ Rd. Hd. Sc.	
91		2	10-32x $\frac{3}{8}$ Fl. Hd. Sc.	
92		2	10-32x $\frac{1}{4}$ Fl. Hd. Sc.	
94		4	10-32x $\frac{5}{8}$ Fill. Hd. Sc.	
95		3	$\frac{3}{8}$ SAE Hex Jam Nut	
97		1	$\frac{3}{32}$ Hex Wrench, Across Flats	
101		1	Thrust Bearing (2305-A)	
110		15"	$\frac{3}{16}$ Felt	
112		53	$\frac{7}{32}$ Steel Ball (Set)	
114		39	$\frac{7}{32}$ Steel Ball (Set)	

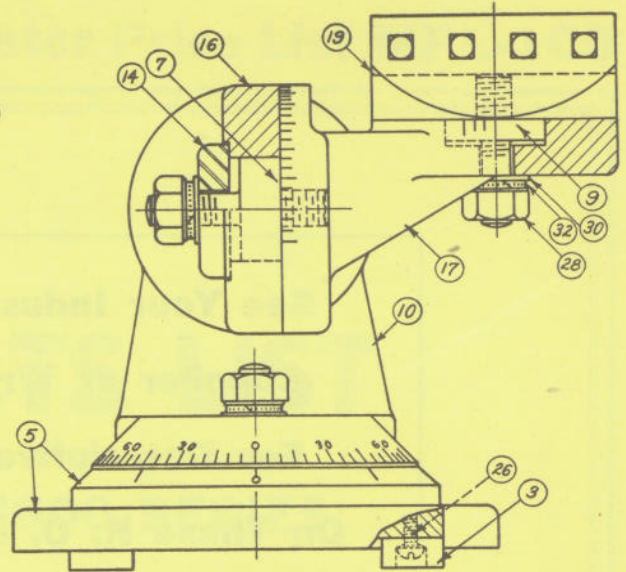
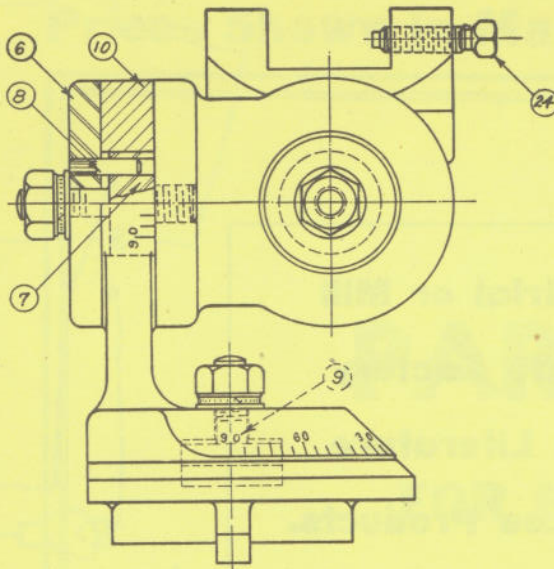
ACCESSORIES FOR B885 RADIAL GRINDING FIXTURE

Part No.	Description	Price Each
B642R	Index Discs for A642P Collar. 4, 6, 8, 20, 24, 28, 30, 32, 34, 36, 38, 40, 42, 44, 48, 52, 54, and 56 Divisions, each Special Index Discs with any number divisions will be furnished on request, each	
B641	Collet Fixture for B843, B893 and B943 Motor Driven Work Head, B842 Sensitive Work Head, B885 Radial Grinding Fixture, less Collets (Will Not Fit B942)	
B641C	Collets for B641 and B941 Collet Fixture. Available sizes: $\frac{3}{16}$ " to 1" by 64ths $\frac{1}{8}$ " to $\frac{1}{4}$ " inclusive by 64ths	
B641K	Straight Sleeves to be used in B842 and B942 Sensitive Work Head, B843, B893,	

Part No.	Description	Price Each
B943	Motor Driven Work Head and B855 Radial Grinding Fixture. Available sizes: 1 $\frac{1}{8}$ ", 1 $\frac{1}{4}$ ", 1 $\frac{3}{8}$ ", 1 $\frac{1}{2}$ ", each	
B642K	No. 11 B. & S. Adapter with standard Milling Machine Taper Socket for holding B & S Cam Lock Tapers. Available in Taper Nos. 10-20-30. For use in B842 and B942 Sensitive Work Head, B843, B893, B943 Motor Driven Work Head and B885 Radial Grinding Fixture, each	
B642T	Taper Sleeves for B842, B942 Sensitive Work Head, B843, B893 and B943 Motor Driven Work Head, & B885 Radial Grinding Fixture. Available sizes: Morse 1, 2, 3, and 4; B & S 5, 7, 8, 9, and 10, each	

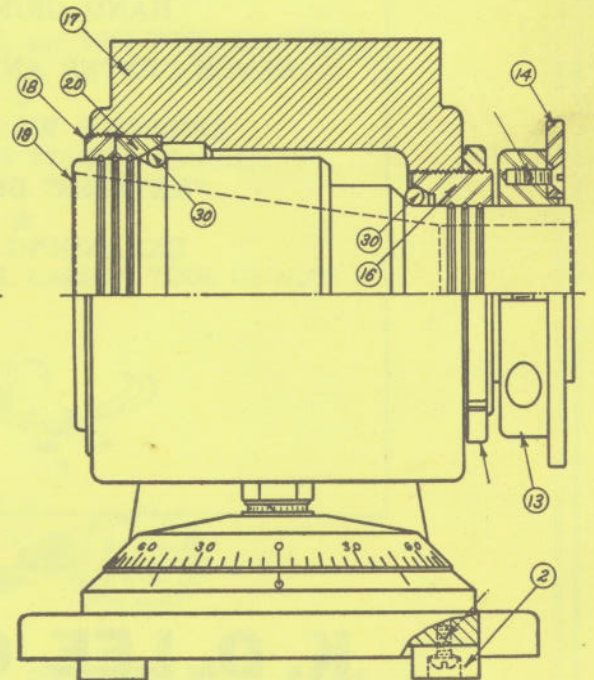
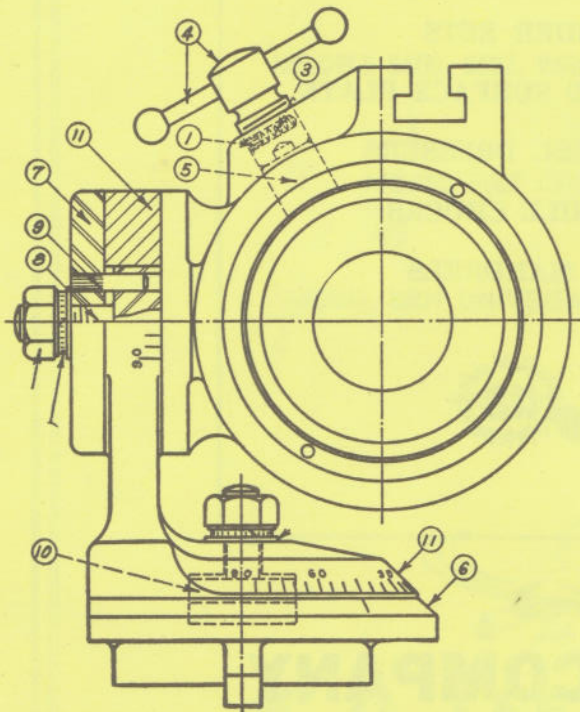
Prices subject to change without notice

B789 UNIVERSAL WORK HOLDING FIXTURE



Index No.	Part No.	Quan. Req'd.	Description	Price Ea.	Index No.	Part No.	Quan. Req'd.	Description	Price Ea.
3	A264	1	Socket Wrench for set scrs.		16	B789S	1	Universal Swivel	
5	A623	2	T-Slot Block		17	B789V	1	Vise Swivel	
6	B620C	1	Base		19	B789X	1	Vise (1 1/2)	
7	B620D	1	Back Plate		24		4	3/8 x 1 1/4 U. S. S. Sq. Hd. Dog Point Set Sc.	
8	B620G	2	Swivel Stud		26		2	6-32x 3/4 St. Rd. Hd. Sc	
9	B620P	1	Knurled Pin		28		4	3/8 U.S.S. Hex Nut (H)	
10	B620R	2	Base Stud		30		4	3/8 S.A.E. Washer (H)	
14	B789E	1	Special Washer		32		4	3/8 Lock Wash'r (Lock Bur'd)	

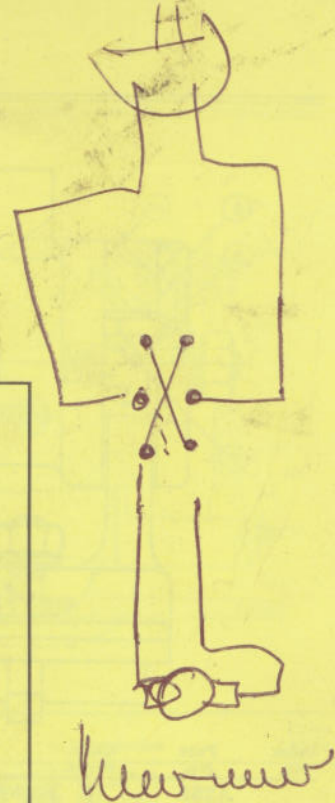
B792 SENSITIVE WORK HEAD



1	A619D	1	Plug		11	B620S	1	Swivel	
2	A623	2	T-Slot Block		13	B792C	1	Index Collar	
3	A630BS	1	Compression Spring		14	B792D	1	Index Disc (24 Div.)	
4	A643D	1	Spindle Lock Screw Ass.		16	B792R	1	Adjusting Race	
5	A643DP	1	Locking Pad		17	B792H	1	Housing	
6	B620C	1	Base		18	B792E	1	Front Lock Ring	
7	B620D	1	Back Plate		19	B792L	1	Lock Ring	
8	B620G	1	Swivel Stud		20	B792S	1	Spindle	
9	B620P	1	Knurled Pin			B792M	1	Front Race	
10	B620R	1	Base Stud					3/32" Steel Balls (Set)	

**See Your Industrial or Mill
Supplier or Write Factory
For Descriptive Literature
On These K. O. Lee Products.**

**SURFACE GRINDERS
TOOL AND CUTTER GRINDERS
CARBIDE TOOL GRINDERS
HAND GRINDER SETS
BENCH CENTER AND SURFACE PLATE
ABRASIVE WHEEL DRESSERS
"KEYLESS" DRILL CHUCKS
EXPANDING MANDRELS**



K. O. LEE COMPANY

ABERDEEN, SOUTH DAKOTA