

CAT. No. 40-800 SABER ATTACHMENT FOR DELTA No. 34-500 8" TILTING ARBOR SAW

The Delta Saber attachment is designed for use in schools, home work shops, pattern shops, sign and display shops and many others. It is designed for cutting wood, plastics, light metal sheets and similar materials. Because of the ability to cut curves and sharp corners, it is a handy tool for working to designs and patterns in model making and for the construction of furniture, toys and ornamental objects of great variety. The maximum thickness which can be cut efficiently is 2 inches.

This saber attachment has been designed to be used on catalog number 34-500 Delta Homecraft 8 inch Tilting Arbor Saw and with Deltashop. The arbor can be tilted 35 degrees. We do not recommend the use of the rip fence or miter gage when using the saber attachment.

Under catalog number 40-800 the customer receives the attachment as shown in Figure 1 with 6-inch diameter drive shaft pulley #49-181, a rubber bumper and two saber blades.

The following accessories, which are available and can be purchased, are: the Sanding Attachment catalog number 711, Machine Files catalog numbers 740 and 760. A variety of other saber saw blades are offered, giving the user a selection to meet the requirements of his work.

Refer to the photographs and drawings to identify the parts mentioned in these instructions.

LUBRICATION

BEFORE OPERATING Saber Saw be sure to fill crank case to proper level with a good grade of SAE-10 machine oil. Approximately 3 to 4 ounces of oil is enough, if more is put in it will leak out.

Remove the truss head screw HSS-529 from the cover TAB-170 to put in the oil. All parts of the mechanism in the crank case, including the drive shaft bearings and lower plunger, are constantly lubricated by splash from the eccentric counterbalance. Check frequently and keep the supply up to the level of the oil hole. Check with body in operating position.

INSTALLATION

The Saber Attachment can be installed quickly and easily. However, we suggest that the motor be disconnected from the power line, as a caution of safety, then proceed as follows:

NOTE: If saw is equipped with Super Safe Guard and Splitter attachment, remove. Remove splitter mounting stud LTA-539.

1. Remove saw table insert and motor belt.
2. Remove circular saw blade from arbor.
3. Insert guide post assembly NSS-347-S including guide post, washer, blade guide and cap screw. See Figures 1 and 6. Guide post held in position with thumb screw SP-1528. Be sure to assemble proper blade guide for saber blade that will be used. Width of slot in blade guide determines this.

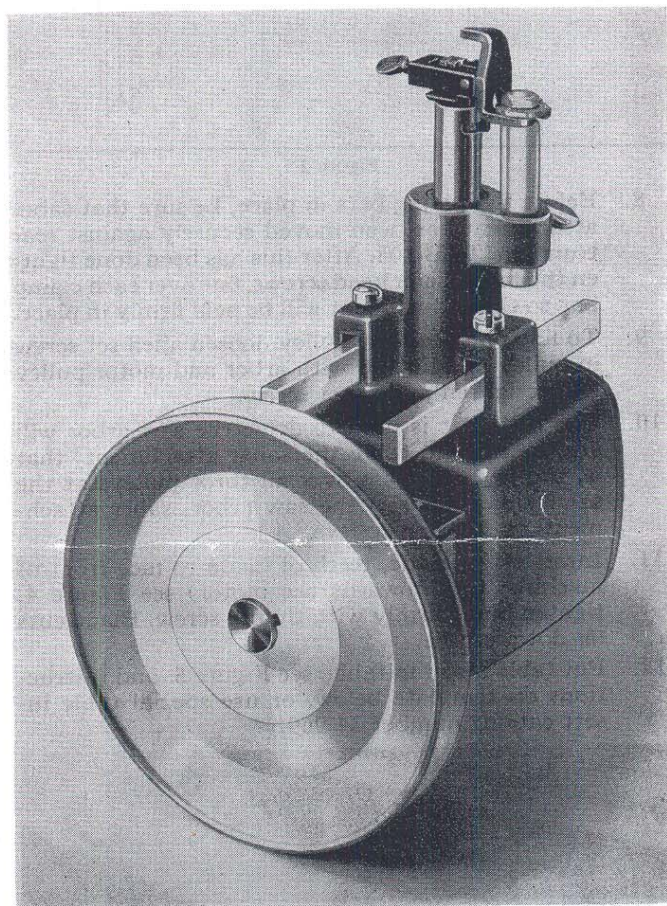


Figure 1

4. Adjust guide post assembly so that the blade guide is $\frac{1}{8}$ of an inch above the lower chuck body when chuck body is in its maximum up position. This can be done by turning pulley shaft, see Figure 2.
5. Insert the two fillister head screws SP-715 see Figure 6, just start them in the hole, do not screw all the way in.
6. Tilt arbor 15 degrees and put saber attachment through opening on the motor side of saw table as shown in Figure 3, with right hand on the inside of the saw to guide the attachment into position. Pulley of attachment on same side as arbor and motor pulleys.
7. Use left hand to hold attachment in position and with right hand insert the two straight clamp bars TAB-172. Clamp bars to fit above the two tie rods and pass through slots in attachment. See Figure 2.

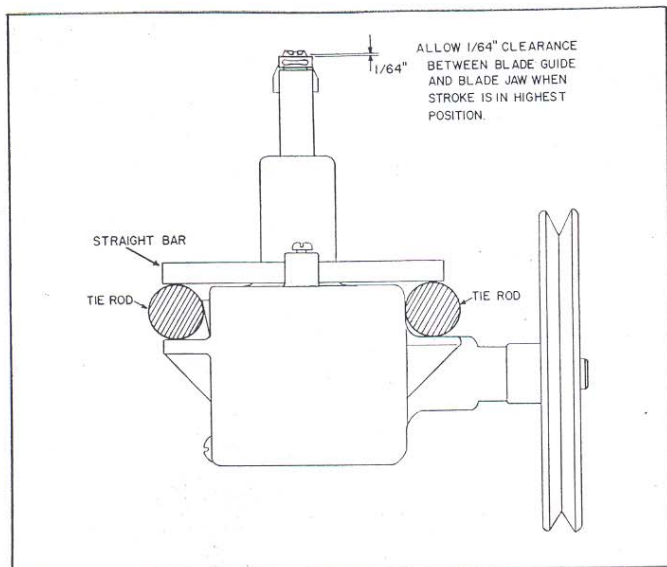


Figure 2

8. Before tightening bars in place, be sure that saber attachment has been moved securely against rear trunnion, TAB-105. After this has been done tighten the two fillister head screws, one over each clamp bar so that attachment will be held firmly in place.
9. To line up saber saw pulley, loosen allen set screw in pulley and line up with arbor and motor pulley and retighten pulley set screw.
10. The belt that is used to drive the saw arbor will also be used to drive the saber attachment; that is, the belt will pass over all three pulleys at the same time; namely, the saw arbor, saber attachment, and motor pulleys.
11. Insert saber blade, teeth of blade to face front of machine, (not towards the motor) see Figure 4, tighten blade firmly with thumb screw. Blade cuts on down stroke.
12. Put table insert in table, see Figure 5, and instructions on template below, or use special table insert catalog number 34-969.

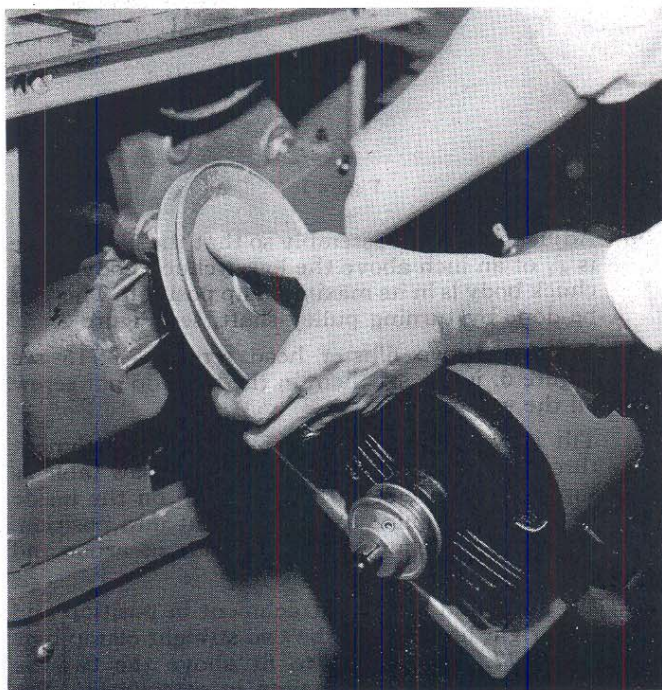


Figure 3

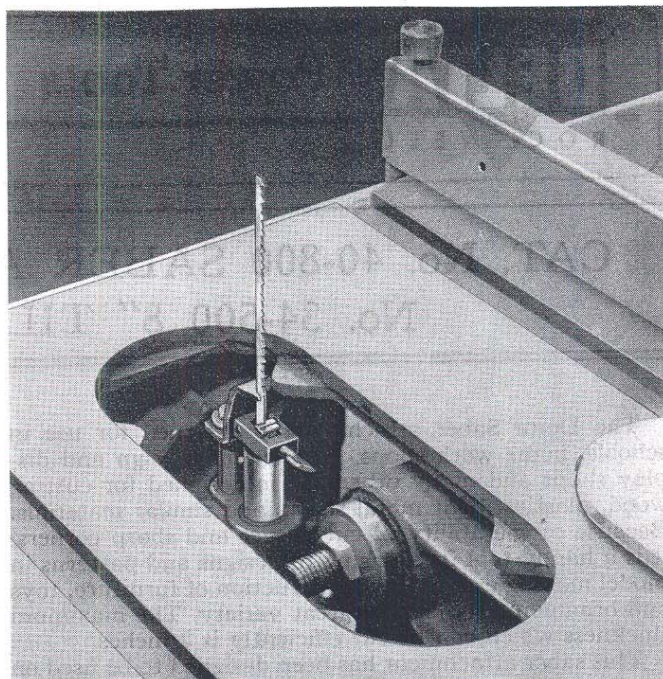


Figure 4

TEMPLATE

A full size template or pattern, which has been made to the correct size, is shown in Figure 7. This template is to be used to drill the $\frac{1}{2}$ inch hole in the table insert for the saber blade to pass through.

Template is to be cut out and pasted on the table insert and be sure it is on correctly, that is, the slot for the saw blade as shown on the template is to be over the slot in the table insert. After this has been done, locate center of the hole on the insert with a center punch, then drill the hole, using a $\frac{1}{2}$ inch diameter drill. The $\frac{1}{8}$ inch diameter hole on the side of the insert, which is also shown on the template, is for the rubber bumper. This small rubber plug is inserted in the insert to keep it from vibrating when using the saber attachment.

CAUTION: The large hole for the sanding attachment should not be drilled in the standard table insert. When the sanding attachment is used another table insert must be used. We have, as an accessory, a special insert under catalog number 34-969, which has the large hole for the sanding attachment and also the $\frac{1}{2}$ inch hole for the saber blade.

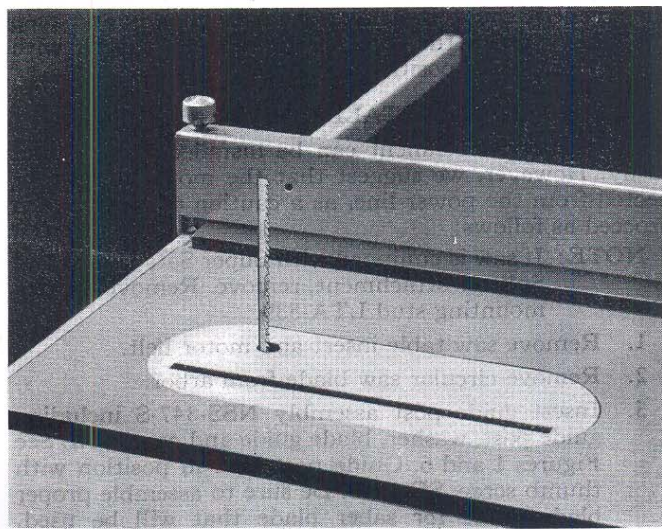


Figure 5

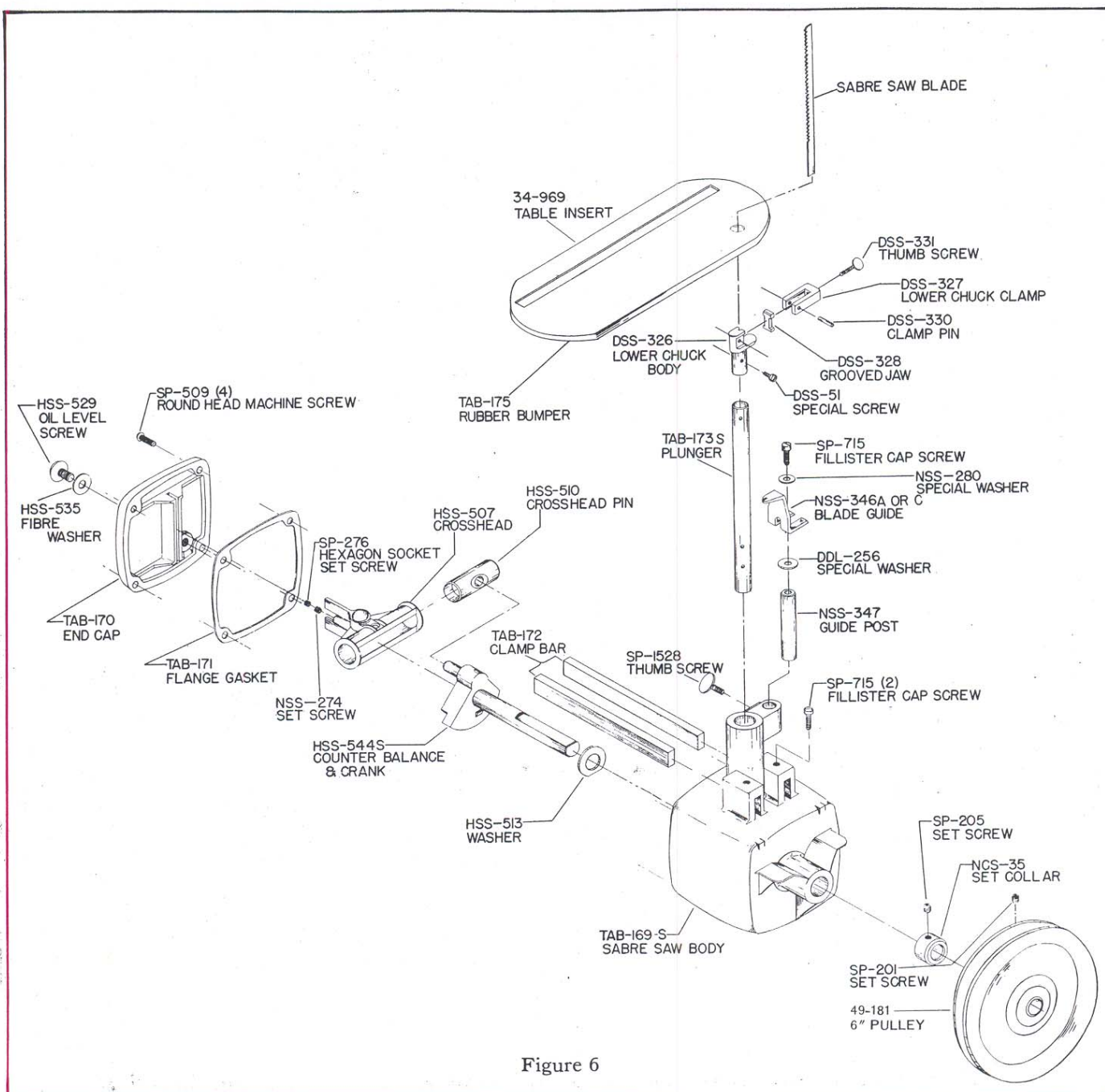


Figure 6

Part No.	Description	Number Required	Part No.	Description	Number Required
DDL-256	17/64" Steel Washer	1	TAB-172	Clamp Bar	2
DSS-51	#6-40 x 13/64" Fillister Hd. Screw	1	TAB-173-S	Plunger and Breather	1
DSS-326	Lower Chuck Body	1	TAB-175	Rubber Bumper	1
DSS-326-R	Chuck Assembly	1	SP-201	5/16-18 x 5/16" Hex. Soc. Set Sc. Flat Pt.	1
DSS-328	Grooved Jaw	1	SP-205	5/16-18 x 1/4" Hex. Soc. Set Sc. Cup Pt.	1
DSS-330	Clamp Pin	1	SP-276	1/4-28 x 1/8" Hex. Soc. Lock Screw	1
DSS-331	#10-32 x 5/8" Thumb Sc. Flat Pt.	1	SP-509	1/4-20 x 1/2" Rd. Hd. Mach. Screw	4
HSS-507	Crosshead	1	SP-715	1/4-20 x 1/2" Fil. Hd. Cap Screw	3
HSS-510	Crosshead Pin	1	SP-1528	5/16-18 x 1" Thumb Screw, Flat Pt.	1
HSS-513	41/64" Steel Washer	1		Saber Blade .025" thick, .187" wide, 9 teeth per in.	
HSS-529	Oil Level Screw	1		Saber Blade .035" thick, .250" wide, 7 teeth per in.	
HSS-535	25/64" Fiber Washer	1	49-181	6" Pulley & Set Screw	1
HSS-544-S	Counterbalance & Crank	1			
NCS-35-S	Set Collar with Set Sc.	1			
NSS-274	1/4-28 x 3/8" Set Screw	1			
NSS-280	Washer	1			
NSS-346-A	Blade Guide .025 Blade	1			
NSS-346-C	Blade Guide .035 Blade	1			
NSS-347	Guide Post	1			
TAB-169-S	Body & Bushings Assembly	1			
TAB-170	End Cover	1			
TAB-171	Flange Gasket	1			

ACCESSORIES

No. 703	Saber Blades, 1/2 doz., 9 teeth per in.	1
No. 704	Saber Blades, 1/2 doz., 7 teeth per in.	1
No. 711	Sanding Attachment	1
No. 740	Set of 6 Assorted Machine Files, 1/4" Shank	1
No. 760	Set of 8 Assorted Machine Files, 1/8" Shank	1
No. 841	Medium Garnet Sanding Sleeve, 11/16 x 2 1/2" (1/2 doz.)	1
No. 842	Fine Garnet Sanding Sleeve, 11/16 x 2 1/2" (1/2 doz.)	1
No. 34-969	Special Insert	1

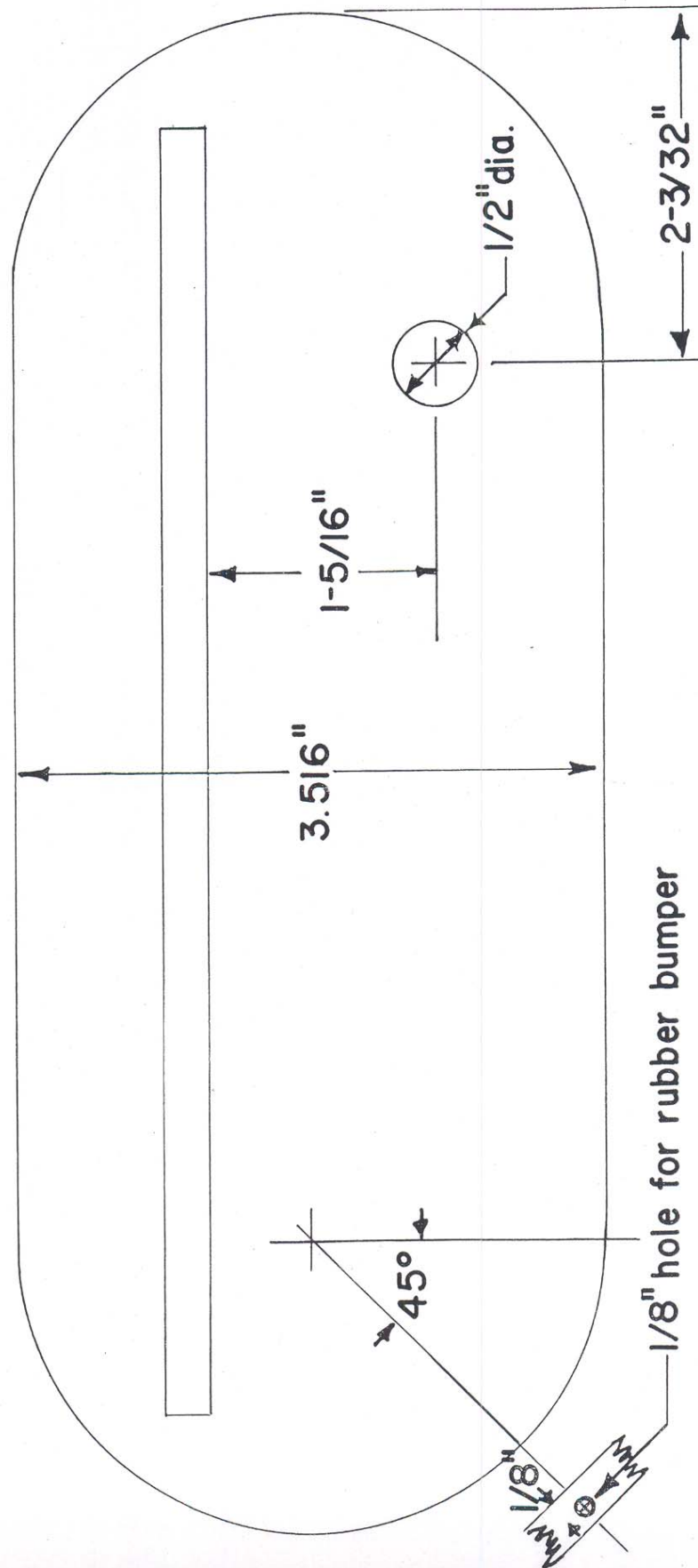


Figure 7

CONSULT YOUR DELTA DEALER FOR PRICES OF REPLACEMENT PARTS, ACCESSORIES AND TOOLS
TO FACILITATE HANDLING WE SUGGEST ORDERING ALL PARTS THROUGH YOUR DELTA DEALER

The right is reserved to make changes in design or equipment at any time without incurring any obligation to install these
on machines previously sold, and to discontinue models of machines, motors or accessories at any time without notice.

Foreign distribution is through TAUCO EXPORT CORPORATION, 38 Pearl Street, New York 4, N. Y.,
to Puerto Rico and the Canal Zone and to all foreign countries except Canada and the Philippine Islands.



Distribution in the United States, its possessions except Puerto Rico and the Canal
Zone, and in Canada and the Philippine Islands is by authorized Delta Dealers.



Rockwell MANUFACTURING COMPANY

DELTA POWER TOOL DIVISION

PITTSBURGH 8, PENNSYLVANIA