



ROCKWELL
MANUFACTURING COMPANY
PITTSBURGH 8, PENNSYLVANIA



31-200 HOMECRAFT 8 1/2" DISC SANDER

The Delta Homecraft Disc Sander is an accessory which permits straight, angular, curved and convex surfaces to be finished accurately. For circular, band and scroll sawed work, beveling edges and ends of square stock and rounding corners, it is ideal. It can be used for finishing wood, plastics, non-metals and metals in the home workshop.

Under the unit No. 31-200, the customer receives the disc sander complete as shown in Fig. 1 less miter gage. Additional accessories, available when ordered extra, are the No. 830 3-inch diameter sanding drum. No. 120 0 to 1/2 inch capacity keyless chuck, Nos. 46-815 and 46-817 garnet paper sanding discs, coarse #1 1/2 grade and fine #0 grade respectively, Nos. 831 through 833 sanding drum sleeves, Nos. 49-503 disk adhesive and No. 31-804 miter gage. Nos. 5250 and 5500 Motor Pulleys.

Refer to the photograph, drawing and parts list to identify the parts mentioned in the following instructions.

TILTING THE TABLE

The table of the disc sander can be tilted 45 degrees down and 30 degrees up. To make this adjustment, loosen the handknob and tilt the table to the desired position.

PAPER SANDING DISCS

The abrasive paper discs or sleeves used on the disc sander depends upon the job at hand. Garnet is used for sanding both wood and plastics. When a garnet sanding disc or sleeve becomes filled or loaded, we suggest replacing it, since continued operation will result in burning the work instead of cutting away the stock. Use coarse paper discs or sleeves for rough work and reserve the fine paper discs or sleeves where a smooth finish is required. These discs and sleeves give a nice, clean cut because the garnet used is hard enough to retain its sharp edges, thus insuring long life and economical operation.

LUBRICATION

The steel shaft of the disc sander rotates in two porous bronze bushings which are press fitted into the sides of the base casting. These bushings hold approximately 30 per cent of their volume in oil, by the oil seeping into the voids of the bushing material.

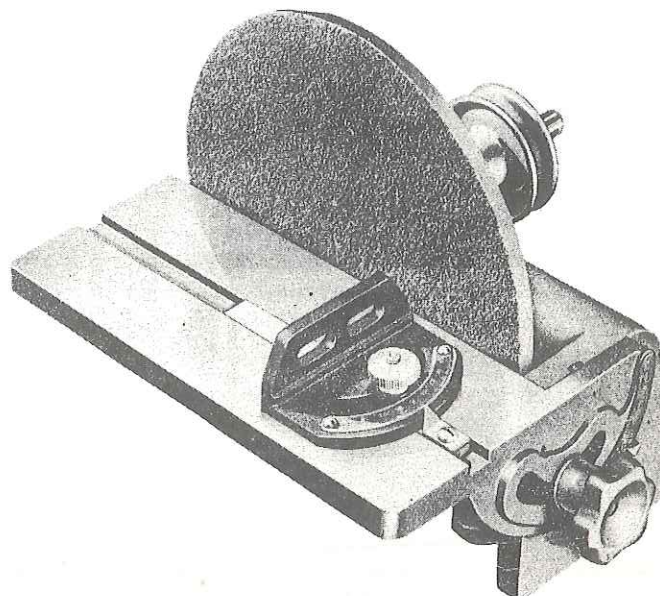


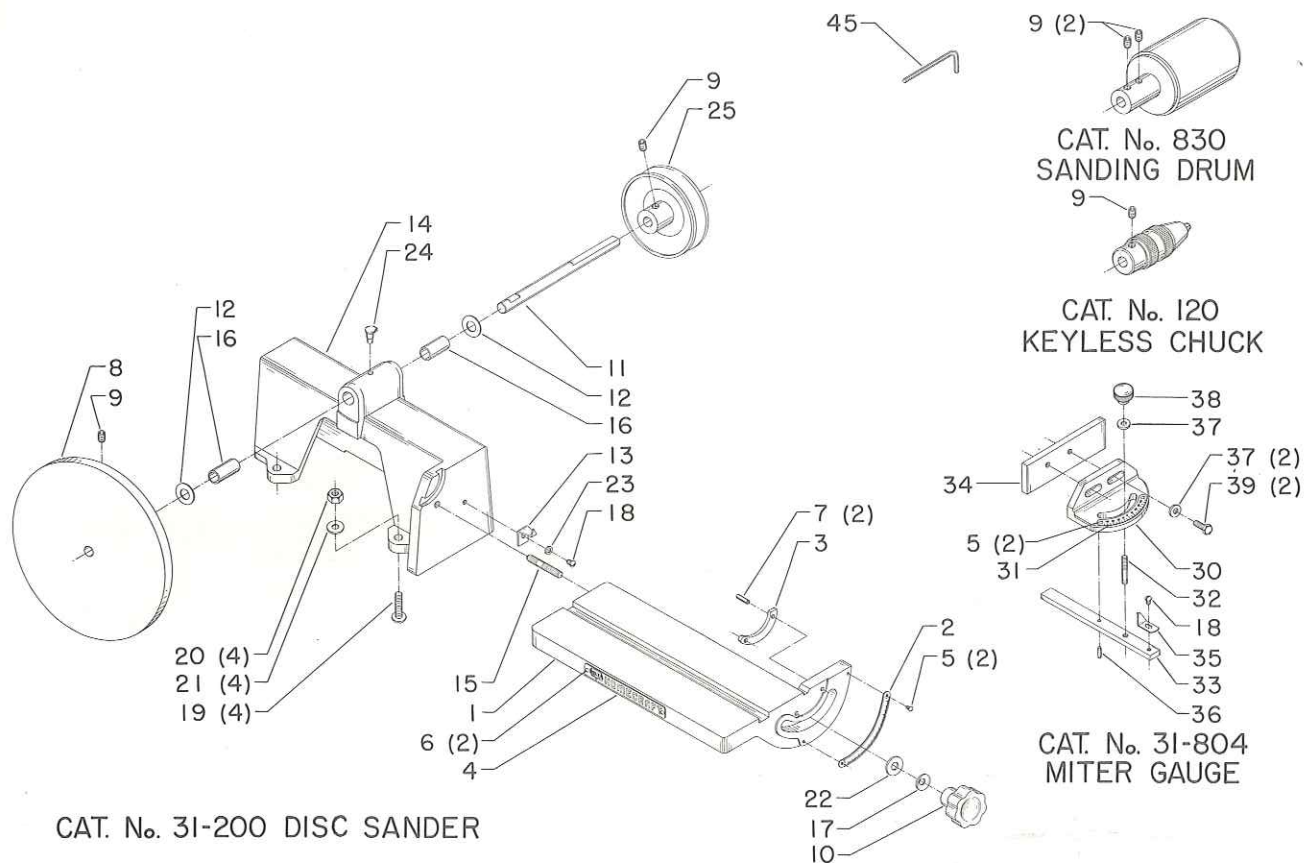
Fig. 1

Delta Homecraft 8 1/2" Disc Sander, Less Miter Gage.

These bushings have been saturated with oil before assembling the disc sander, consequently they will run a considerable length of time without adding lubrication. We suggest frequently oiling these bushings by lifting the cap of the oiler on top of the base casting.

Since the bushings are porous the oil is allowed to seep slowly through the bushing material replacing the oil which may have been lost from the bushing. Oil seepage will be somewhat faster when the disc sander is run continuously, due to higher temperature of the bushings. By allowing the oil to seep through the porous bronze bushings instead of having the bushing drilled for oiling it is possible to prevent the entrance of grit and abrasive material from entering the bushings and cause excessive wear.

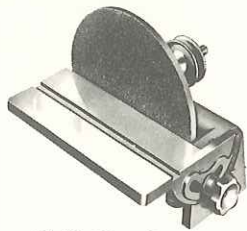
We suggest using a good grade of SAE 20 oil which is suitable for this disc sander. With this type of lubrication there may be a slight amount of oil leakage from these bushings. This leakage of oil will permit dust particles, abrasive particles, etc., to adhere to the base casting. We suggest wiping an excessive leakage of oil from the sides of the base casting to avoid the possibility of any grit entering the porous bronze bushings.



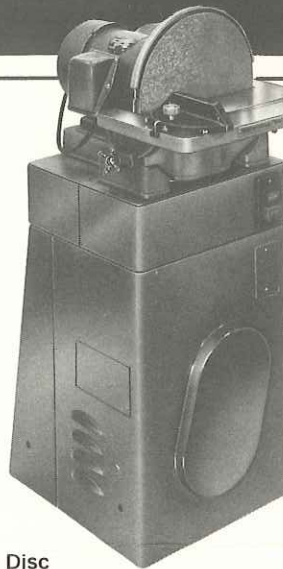
Replacement Parts

Ref. No.	Part No.	Description	Ref. No.	Part No.	Description
1	HDS-101-M	Table, Including:	24	SP-2475	1/4" Oil Hole Cover
2	HDS-107	Scale	25	Cat. #5400-A	Pulley, Including:
3	HDS-108	Guide	9	SP-201	5/16-18 x 5/16" Soc. Hd. Set Scr.
4	HL-637	Nameplate	*	Cat. #46-817	Abrasive Disc
5	SP-2250	#4 x 3/16" Drive Screw		Cat. #31-804	Miter Gauge
6	SP-2252	#2 x 3/16" Drive Screw	30	CG-4-R	Miter Gauge, Including:
7	SP-2707	5/32 x 1/2" Roll Pin	31	LBS-62	Tilting Scale
8	HDS-103-R	Sanding Disc, Including:	5	SP-2250	#4 x 3/16" Drive Screw
9	SP-201	5/16-18 x 5/16" Soc. Hd. Set Scr.	32	CG-7	Stud
10	HDS-104-3	Handwheel	33	CG-16	Bar
11	HDS-105	Shaft	34	CG-19	Face Plate
12	HDS-110	1/2 x 1 x 1/32" Fiber Washer	35	CG-32	Pointer
13	HDS-111	Pointer	36	NCS-343	Pin
14	HDS-122-M	Base, Including:	37	NSS-280	1/4 x 9/16 x .078" Steel Washer
15	HDS-106	Stud	38	SBS-40	Knurled Knob
16	HDS-109	Bearing	18	SP-577	#10-32 x 3/16" Rd. Hd. Screw
17	LTA-519	Spring Washer	39	SP-611	1/4-20 x 1/2" Hex. Hd. Cap Scr.
18	SP-577	#10-32 x 3/16" Rd. Hd. Screw		Cat. #120	Keyless Chuck, Including:
19	SP-908	5/16-18 x 1" Rd. Hd. Stove Bolt	9	SP-201	5/16-18 x 5/16" Soc. Hd. Set Scr.
20	SP-1300	5/16"-18 Hex. Nut	45	Cat. #194	5/32" Hex. Wrench
21	SP-1604	5/16 x 3/4 x .065" Washer		Cat. #830	Sanding Drum, Including:
22	SP-1605	3/8 x 7/8 x 1/16" Steel Washer	9	SP-201	5/16-18 x 5/16" Soc. Hd. Set Scr.
23	SP-1610	13/64 x 3/8 x 1/32" Steel Washer	45	Cat. #194	5/32" Hex. Wrench
			*	Not Shown	

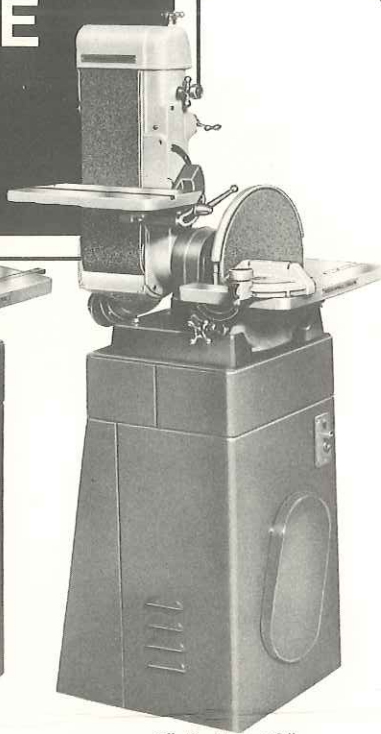
SAFETY SUGGESTIONS FOR ROCKWELL DELTA ABRASIVE FINISHING MACHINES



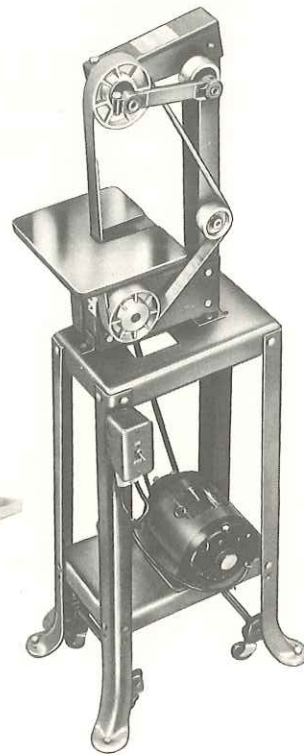
8 1/2" Disc Sander



12" Abrasive Disc
Finishing Machine



6" Belt & 12"
Disc Finishing Machine

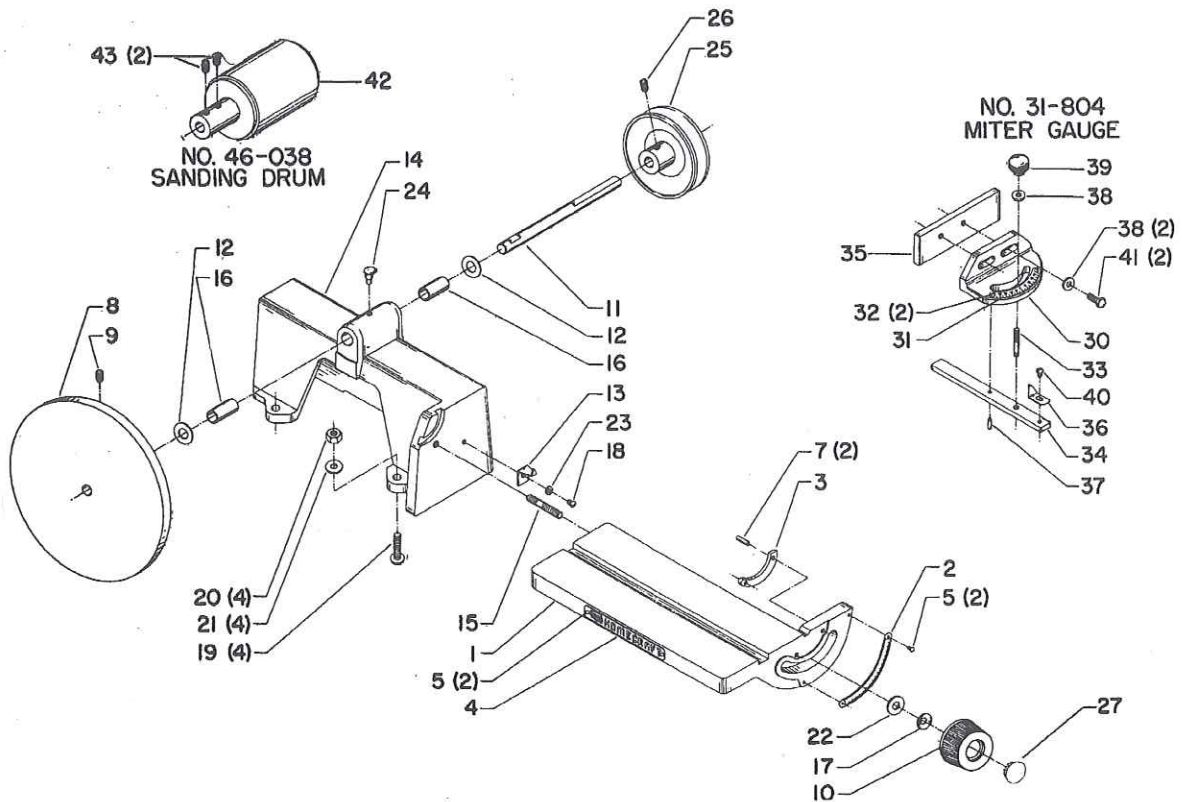


Sander/Grinder



6" Abrasive Belt
Finishing Machine

1. READ the instruction manual before operating your machine.
2. IF YOU ARE NOT thoroughly familiar with the operation of Finishing Machines, obtain advice from your supervisor, instructor or other qualified person.
3. REMOVE tie, rings, watch and other jewelry, and roll up sleeves.
4. ALWAYS wear safety glasses or a face shield.
5. MAKE SURE wiring codes and recommended electrical connections are followed and that machine is properly grounded.
6. MAKE all adjustments with the power off.
7. MAKE SURE belt is tracking correctly.
8. MAKE CERTAIN the disc or belt is not torn or loose.
9. KEEP hands away from abrasive surfaces.
10. ALWAYS use a backstop when using the belt finishing machine in a horizontal position.
11. SAND with the grain of the wood.
12. NEVER wear gloves or hold the work with a rag when sanding.
13. ALWAYS sand on downward side of disc when using the disc finishing machine, so that the work is held securely on the table.
14. SHUT OFF power and do not leave until the machine has come to a complete stop.
15. BEFORE LEAVING the machine, make sure the work area is clean.
16. DISCONNECT machine from power source when making repairs or adjustments.



Replacement Parts

Ref. No.	Part No.	Description	Ref. No.	Part No.	Description
1	416-01-391-0002	Table, Incl:	25	41-062	Pulley, Incl:
2	951-02-010-7827	Scale	26	901-04-190-0201	5/16-18 X 5/16" SHSS
3	416-01-055-0001	Guide	27	1086950	Plug
4	1088278	Nameplate	*	46-817	Abrasive Disc
5	901-06-450-2250	#4 X 3/16" Dr. Scr.	ACCESSORIES NOT INCLUDED WITH BASIC MACHINE		
7	905-01-010-2707	5/32 X 1/2" Roll Pin			
8	416-01-339-0002	Sanding Disc., Incl:			
9	901-04-190-0201	5/16-18 X 5/16 SHSS			
10	931-02-012-0489	Knob			
11	416-01-106-0001	Shaft			
12	904-01-021-3564	Fiber Washer			
13	951-01-020-7847	Pointer			
14	416-01-305-0004	Base, Incl:			
15	901-07-261-3216	Stud			
16	920-75-011-3910	Bearing	**	31-804	Miter Gauge, Const. Of:
17	904-01-021-5712	Spring Washer	30	412-03-312-5001	Miter Gauge, Incl:
18	901-02-010-0577	#10-32 X 3/16" RHS	31	951-02-010-7832	Tilting Scale
19	901-02-010-0515	5/16-18 X 1-1/4" RHSB	32	901-06-450-2250	#4 X 3/16" Drive Scr.
20	902-01-010-1300	5/16-18" Hex Nut	33	901-07-261-3205	Stud
21	904-01-010-1604	Washer	34	412-03-004-5001	Bar
22	904-01-010-1605	Steel Washer	35	412-03-004-5002	Face Plate
23	904-01-010-1610	Steel Washer	36	951-01-020-7812	Pointer
24	907-00-000-2475	1/4" Oil Hole Cover	37	422-02-071-0002	Pin
			38	904-01-031-2934	Steel Washer
			39	902-04-020-1418	Knurled Knob
			40	901-02-010-0577	#10-32 X 3/16" RHS
			41	901-01-060-0611	1/4-20 X 1/2" HHCS
			42	46-038	Sanding Drum, Incl:
			43	901-04-190-0201	5/16-18 X 5/16" SHSS

* NOT SHOWN

** NOT SHOWN ASSEMBLED