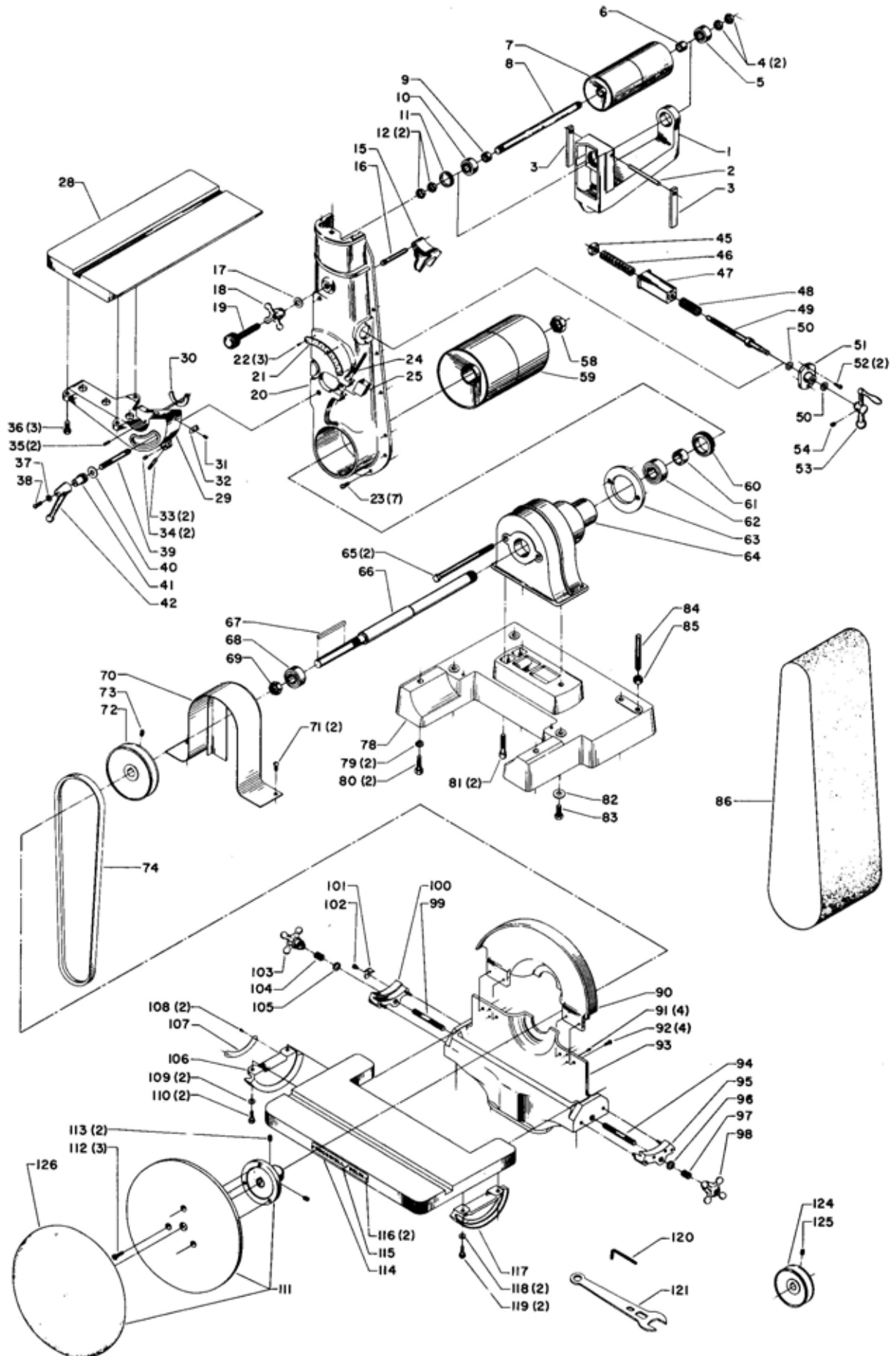




31-710 6" BELT AND 12" DISC FINISHING MACHINE

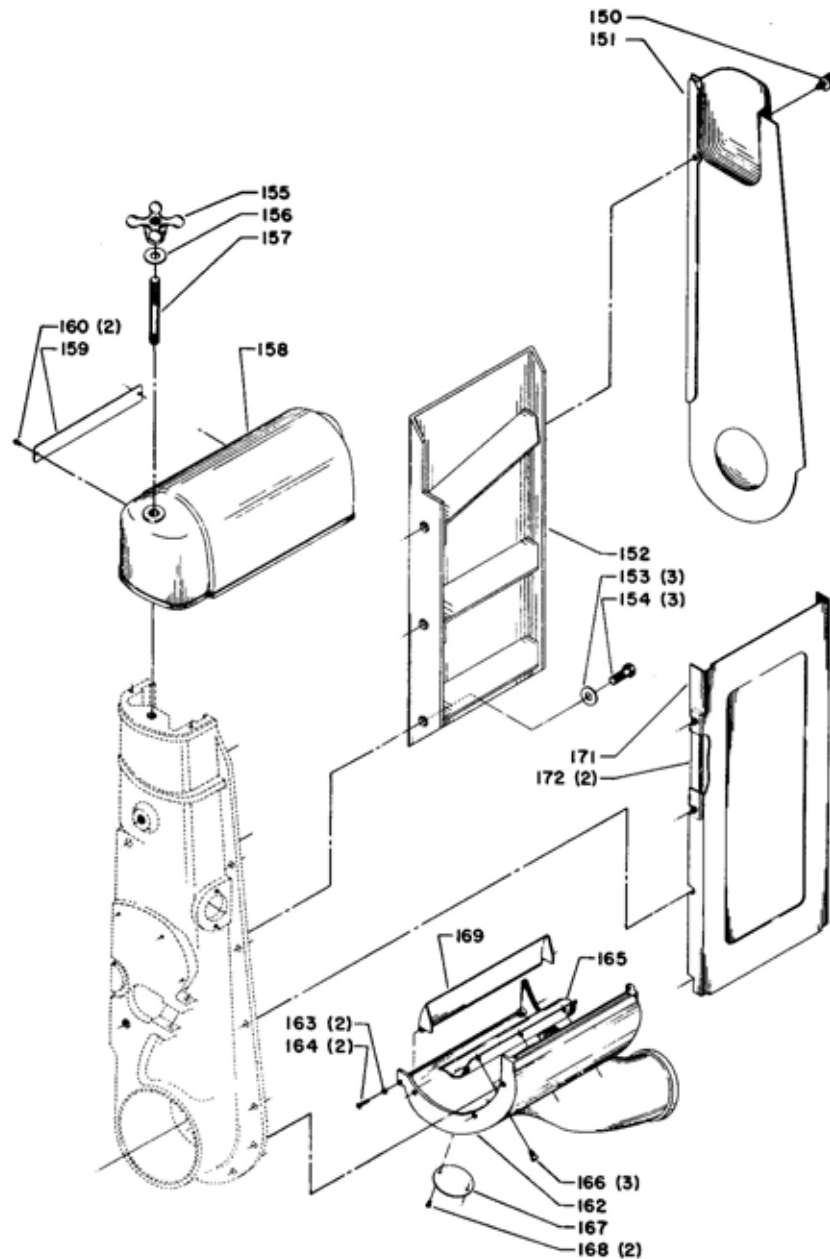


Replacement Parts

Ref. No.	Part No.	Description	Ref. No.	Part No.	Description
**	BS-204-S	Idler Drum Bracket Assembly, consisting of:	69	LBS-86	Bearing Nut
1	BS-204	Idler Drum Bracket	70	420-01-354-0003	Belt Guard Assembly
2	BS-232	Pin	71	SP-7528	1/4-20 x 1/2 Truss Hd. Screw
3	BS-231	Key	72	Cat. #41-084	5" Dia. Arbor Pulley (3/4 Bore), incl.:
4	BS-261	Hex. Nut	73	SP-206	5/16-18 x 5/16 Hex. Soc. Set Scr.
5	SP-5354	Bearing	74	Cat. #49-146	V-Belt
6	BS-262	Spacer Collar	78	420-01-005-0002	Base
7	BS-226-R	Idler Drum (Pair)	79	SP-1704	3/8 Lockwasher
8	BS-225	Idler Drum Shaft	80	SP-642	3/8-16 x 1 Hex. Hd. Screw
9	BS-229	Spacer Collar	81	901-03-011-9984	3/8-24 x 1 1/2 Soc. Hd. Cap Scr.
10	SP-5354	Bearing	82	SP-1606	7/16 x 1 x 5/64 Washer
11	DP-242	Bearing Closure Nut	83	SP-688	3/8-24 x 3/4 Hex. Hd. Screw
12	BS-261	Hex. Nut	84	BS-252	Stop Pin
15	BS-233	Belt Tension Lever	85	SP-1002	7/16-14 Hex. Nut
16	BS-236	Belt Tension Lever Pin	* 86	Cat. #1412	Garnet Belt (80 grit)
17	DSS-36	1/2 x .867 x 1/16 Fiber Washer	* 86	Cat. #1413	Garnet Belt (40 grit)
18	406-03-100-0001	Star Wheel	* 86	Cat. #1414	Aluminum Oxide Belt (100 grit)
19	406-03-412-0005	Belt Adj. Screw Assembly	* 86	Cat. #1415	Aluminum Oxide Belt (50 grit)
20	406-03-049-0002	Bracket	90	DS-4	Upper Guard
21	BS-250	Tilting Scale	91	J-44	#8-32 x 5/16 Headless Set Screw
22	SP-2250	#4 x 3/16 Drive Screw	92	SP-560	#10-32 x 7/16 Rd. Hd. Screw
23	SP-715	1/4-20 x 1/2 Fil. Hd. Screw	93	DS-5	Lower Guard
24	SP-2705	7/32 x 1 7/8 Roll Pin	94	DS-14	Stud
25	NJ-231	Stop Lock	95	DS-12-S	Clamp w/Pins
**	Cat. #1401	Tilting Table Assy., consisting of:	96	DDL-175	29/64 x 3/4 x 1/16 Washer
28	BS-206	Tilting Table	97	NCS-33	Coil Spring
29	BS-207-S	Trunnion, including:	98	NCS-32	Star Wheel
30	NJ-229	Segment	99	DS-14	Stud
31	SP-551	#10-32 x 1/4 Rd. Hd. Screw	100	DS-12-S	Clamp w/Pins
32	TCS-271	Pointer	101	420-01-075-0001	Pointer
33	NJ-233	1/4-28 x 1 Stop Screw	102	SP-502	1/4-20 x 1/4 Rd. Hd. Screw
34	NCS-177	1/4-28 x 1/4 Set Screw	103	NCS-32	Star Wheel
35	SP-2707	5/32 x 1/2 Roll Pin	104	NCS-33	Coil Spring
36	SP-688	3/8-24 x 3/4 Hex. Hd. Screw	105	DDL-175	29/64 x 3/4 x 1/16 Washer
37	SP-1603	1/4 x 9/16 x 3/64 Washer	**	DS-9-S	Trunnion Assy., consisting of:
38	SP-503	1/4-20 x 5/8 Rd. Hd. Screw	106	DS-9	Trunnion
39	BS-241	Stud	107	DS-8	Tilting Scale
40	SP-1606	7/16 x 1 x 5/64 Washer	108	SP-2252	#2 x 3/16 Drive Screw
41	NCS-361	Serrated Nut	109	SP-1603	1/4 x 9/16 x 3/64 Washer
42	SR-217	Clamp Handle	110	SP-612	1/4-20 x 5/8 Hex. Hd. Screw
45	SP-1304	7/16-14 Square Nut	111	Cat. #1430	Disk Assembly, including:
46	LBS-105	Spring	112	SP-761	1/4-20 x 1/2 Hex. Soc. Flat Hd. Scr.
47	BS-234	Sleeve	113	SP-201	5/16-18 x 5/16 Hex. Soc. Set Scr.
48	BS-245	Spring	114	DS-2	Table
49	BS-239-S	Shaft w/Collar	115	960-02-012-1420	Nameplate
50	DP-41	7/16 x 3/4 x 1/32 Fiber Washer	116	SP-2250	#4 x 3/16 Drive Screw
51	BS-235	Cap	117	DS-9	Trunnion
52	DDL-105	#10-32 x 7/16 Spec. Fil. Hd. Screw	118	SP-1603	1/4 x 9/16 x 3/64 Washer
53	NCS-59-S	Ball Crank, including:	119	SP-612	1/4-20 x 5/8 Hex. Hd. Screw
54	SP-225	5/16-18 x 1/4 Hex. Soc. Set Scr.	120	Cat. #194	5/16 Hex. Wrench
58	BS-224	Drive Shaft Nut	121	Cat. #1520	1 1/16 Open End & 5/8 Hex. Box Wrench
59	BS-219-S	Drive Drum (Pair)	* 124	Cat. #41-052	3 1/2" Dia. Motor Pulley (1/2 Bore), incl.:
60	BS-223	Bearing Retainer	* 125	SP-206	5/16-18 x 5/16 Hex. Soc. Set Screw
61	BS-221	Spacing Collar	* 124	Cat. #41-053	3 1/2 Dia. Motor Pulley (5/8 Bore), incl.:
62	SP-5339	Bearing	* 125	SP-206	5/16-18 x 5/16 Hex. Soc. Set Screw
63	BS-212	Clamp Ring	* 124	Cat. #41-054	3 1/2 Dia. Motor Pulley (3/4 Bore), incl.:
64	BS-202	Bearing Housing	* 125	SP-206	5/16-18 x 5/16 Hex. Soc. Set Screw
65	SP-639	7/16-14 x 5 1/2 Hex. Hd. Scr.	* 126	Cat. #1427	Garnet Belt, (50 grit) Pkg. of 6
66	420-01-106-0002	Drive Shaft	* 126	Cat. #1428	Garnet Belt, (60 grit) Pkg. of 6
67	927-03-010-2656	3/16 x 3/16 x 2 5/8 Key	*	Cat. #49-503	Disc Adhesive
68	SP-5338	Bearing			

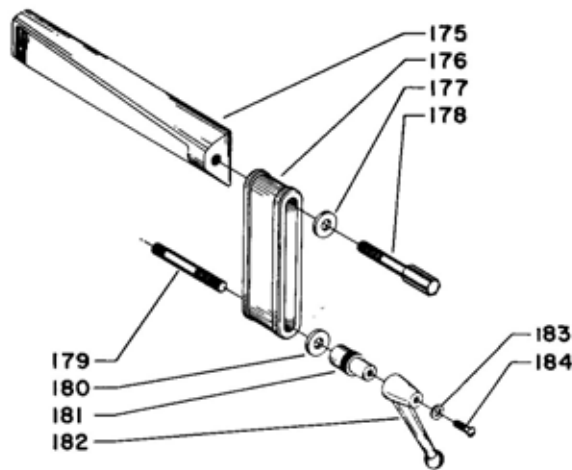
* These parts Are not furnished with Basic Machine.

** Not shown assembled.

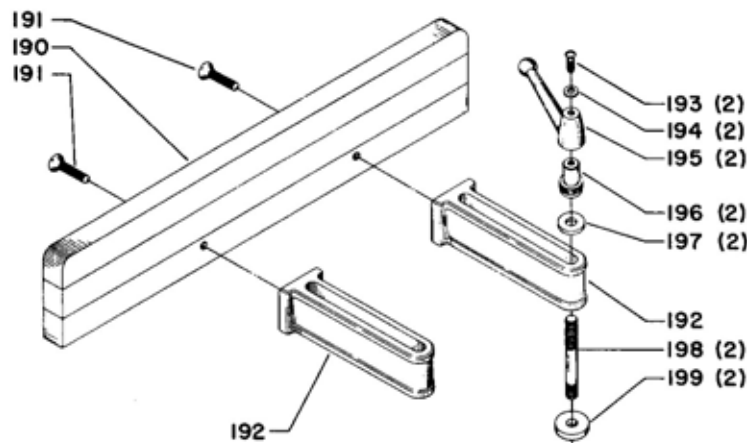


Replacement Parts

Ref. No.	Part No.	Description	Ref. No.	Part No.	Description
150	CBL-444	Spec. Thumb Screw	162	BS-209	Drive Drum Guard
151	BS-214	Side Guard	163	SP-1726	#8 Lockwasher
152	406-03-391-0003	Platen	164	SP-553	#6-32 x 1/2 Rd. Hd. Screw
153	SP-1605	3/8 x 7/8 x 1/16 Washer	165	BS-211	Dust Deflector
154	SP-640	3/8-16 x 3/4 Hex. Hd. Screw	166	901-02-010-7562	#10-32 x 5/16 Rd. Hd. Screw
155	NCS-32	Star Wheel	167	960-02-012-1426	Nameplate
156	DDL-175	29/64 x 3/4 x 1/16 Washer	168	SP-2252	#2 x 3/16 Drive Screw
157	BS-241	7/16-14 x 2 13/16 Stud	169	BS-210	Deflector Plate Guard
158	406-03-354-0013	Idler Drum Guard, incl. :	171	BS-215	Bottom Guard
159	960-02-012-1420	Nameplate	172	BS-242	Clamp Bar
160	LBS-63	Hollow Rivet			



BACKSTOP



FENCE

Replacement Parts

Ref. No.	Part No.	Description	Ref. No.	Part No.	Description
ACCESSORIES - NOT FURNISHED WITH BASIC MACHINE					
	Cat. #1403	Backstop Assy., consisting of:	194	SP-1603	1/4 x 9/16 x 3/64 Washer
175	BS-246	Back Stop	195	SR-217	Clamp Handle
176	BS-247	Link for Back Stop	196	NCS-361	Serrated Nut
177	DDL-174	Spec. Steel Washer	197	DDL-174	Spec. Steel Washer
178	DDL-258	Spec. Clamp Screw	198	BS-241	7/16-14 x 2 13/16 Stud
179	BS-241	7/16-14 x 2 13/16 Stud	199	BS-257	29/64 Spec. Washer
180	DDL-174	Spec. Steel Washer	•	Cat. #865	Clamp Attachment for Miter Gage
181	SF-18	Serrated Nut	•	Cat. #34-833	Miter Gage
182	SR-217	Clamp Handle	•	Cat. #49-254	18 Gallon Vacuum Cleaner 115V, 1 Phase
183	SP-1603	1/4 x 9/16 x 3/64 Washer	•	Cat. #49-255	28 Gallon Vacuum Cleaner 115V, 1 Phase
184	SP-503	1/4-20 x 5/8 Rd. Hd. Screw	•	Cat. #49-579	"Y" Connector for Vacuum Cleaner
	Cat. #1410	Fence Assy., consisting of:	•	Cat. #49-589	Adapter for Vacuum Cleaner (belt unit)
190	BS-249	Fence	•	Cat. #50-140	Adapter for Vacuum Cleaner (disc unit)
191	SP-409	5/16-18 x 1 1/4 Flat Hd. Screw.	•		Not shown.
192	BS-248	Fence Bracket			
193	SP-503	1/4-20 x 5/8 Rd. Hd. Screw			