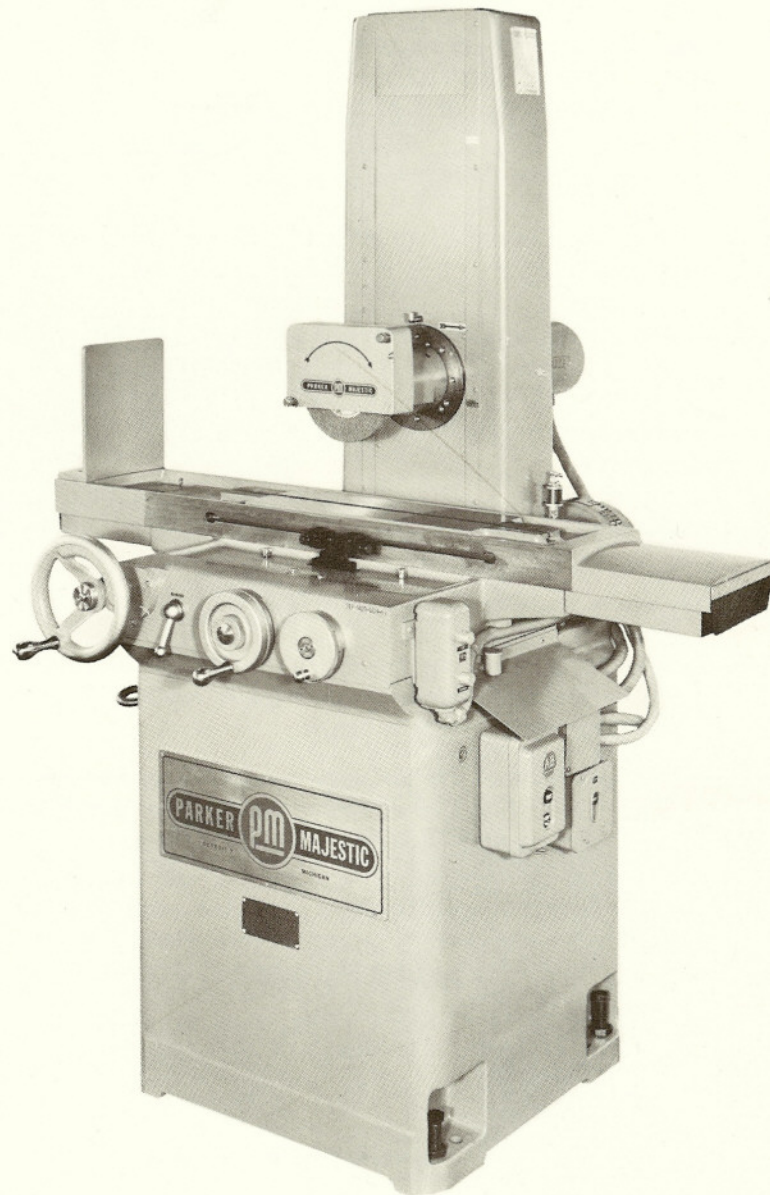


PARKER-MAJESTIC

Service Manual and Parts Catalog

NO 2 & NO 2Z SURFACE GRINDER



PARKER-MAJESTIC, INCORPORATED

147 JOS. CAMPAU

DETROIT, MICHIGAN 48207

Telephone: 313—259-0770

SPECIFICATIONS

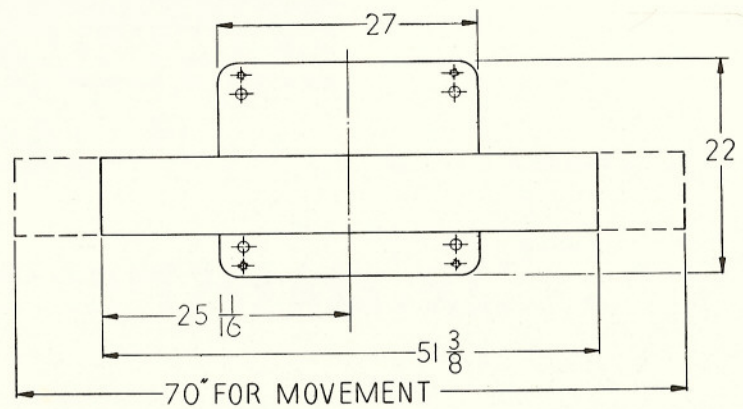
- Type:** Hand feed tool room surface grinder. Horizontal spindle, grind with wheel periphery.
- Capacity:** 6 inch cross feed by 18" longitudinal feed, 20" height from centerline of grinding wheel to top surface of the work table.
- Spindle:**
 A. Motorized, 1, 1½ and 2 HP at 3450 RPM.
 B. Belt Drive, 1½ HP at 3450 RPM drive motor. Spindle speeds of 2200 to 6000 RPM in six steps through change of belt on sheaves.
- Grinding Wheel:** 7" diameter- x 5/8 wide x 1¼ wheel hole.
- Accuracy:** The machine can be expected to grind flat less than .0001 inches over 6 x 18 area. The machine should produce 6 to 8 RMS finish with 60 grit grinding wheel.
- Electrical Specifications:** The machine is normally wired to NEMA standards unless otherwise specified.
- Lubrication:** Motors, spindles and handwheel shafts are packed with lifetime grease and no lubrication need be added.
- The cast iron slides on the machine are lubricated with medium weight way oil.
- The machine can be lubricated by one of three methods.
 Standard: Hand lubrication through oil cups; fill daily.
- Optional: a. One shot lubrication by means of a hand pump; pull handle once daily.
 b. Automatic lubrication through a motor driven pump which is energized when machine is in use.
- Machine Slides:** Machine slides are of vee and flat way construction, scraped flat and straight. The way material is cast iron. Some machines have rulon material bonded to the ways to reduce friction. Rulon material can be replaced after wear.
- Dust Protection:** This surface grinder has been carefully designed with the best possible dust protection for all moving parts and working surfaces. No detail has been overlooked. All covers, shields and wipers are arranged to keep dust and dirt away from vital parts.

NET WEIGHT— 1500 LB

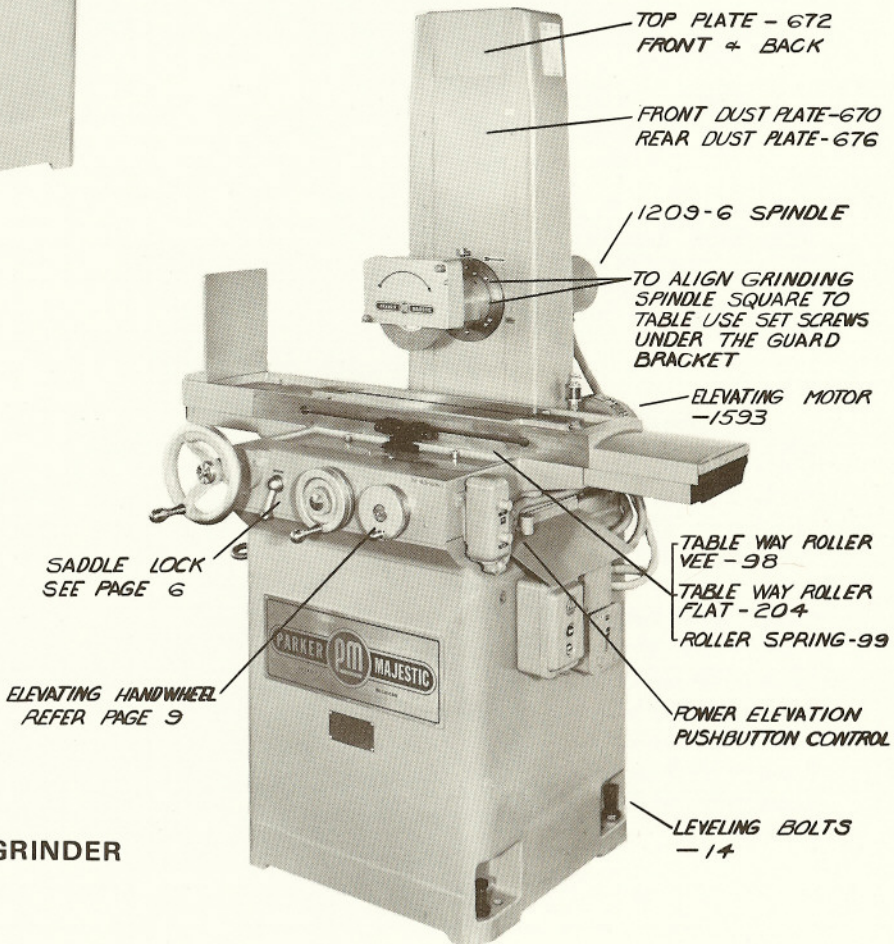
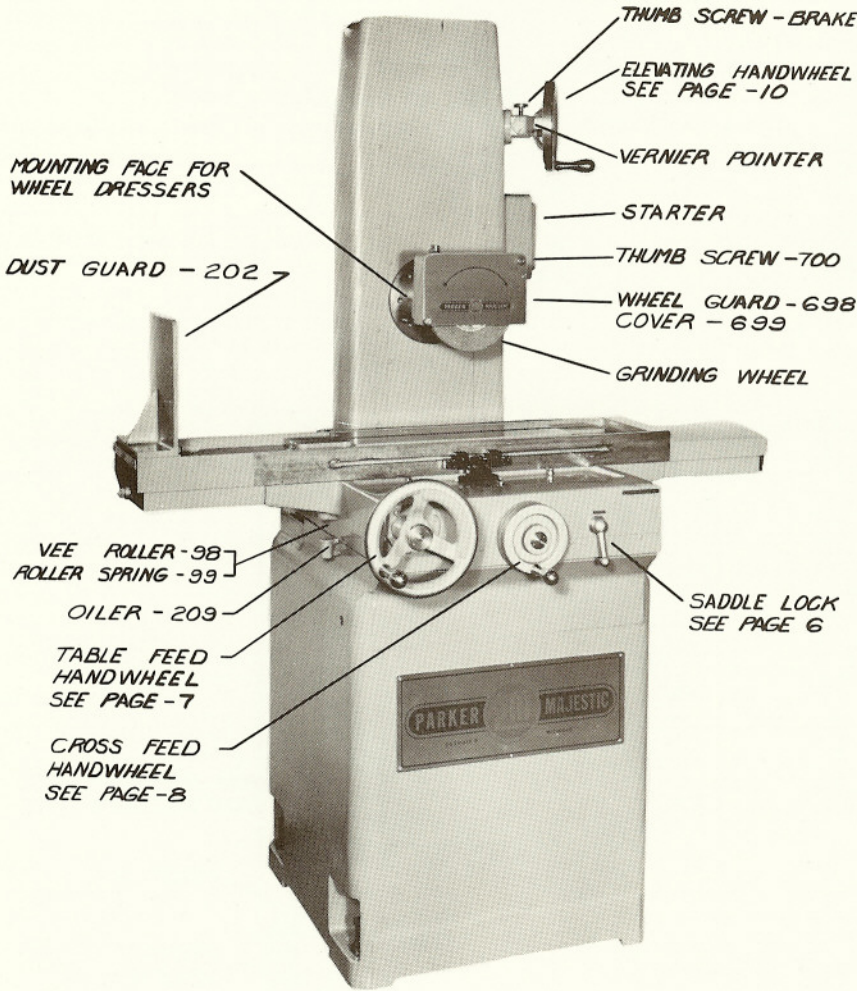
SHIPPING WEIGHT — 1700 LB

FLOOR AREA — 30" x 70"

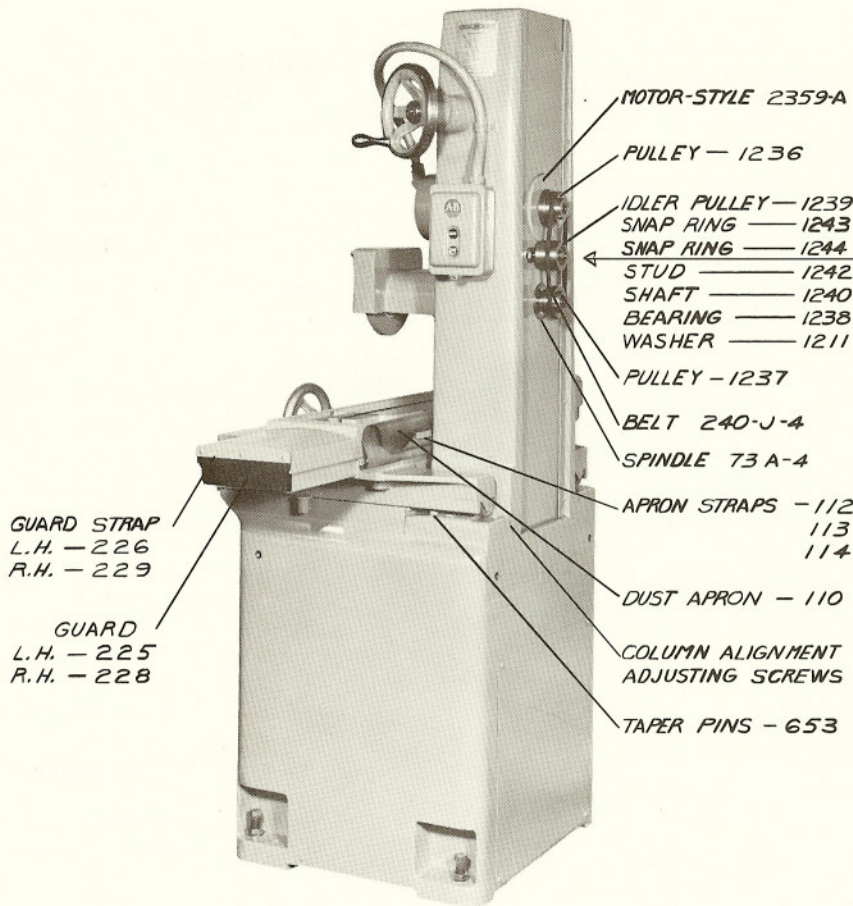
SHIPPING CRATE SIZE — 52 x 36 x 74



NO. 2 SURFACE GRINDER



NO. 2Z SURFACE GRINDER



**NO. 2 SURFACE GRINDER
WITH STANDARD MULTI-
SPEED SPINDLE**

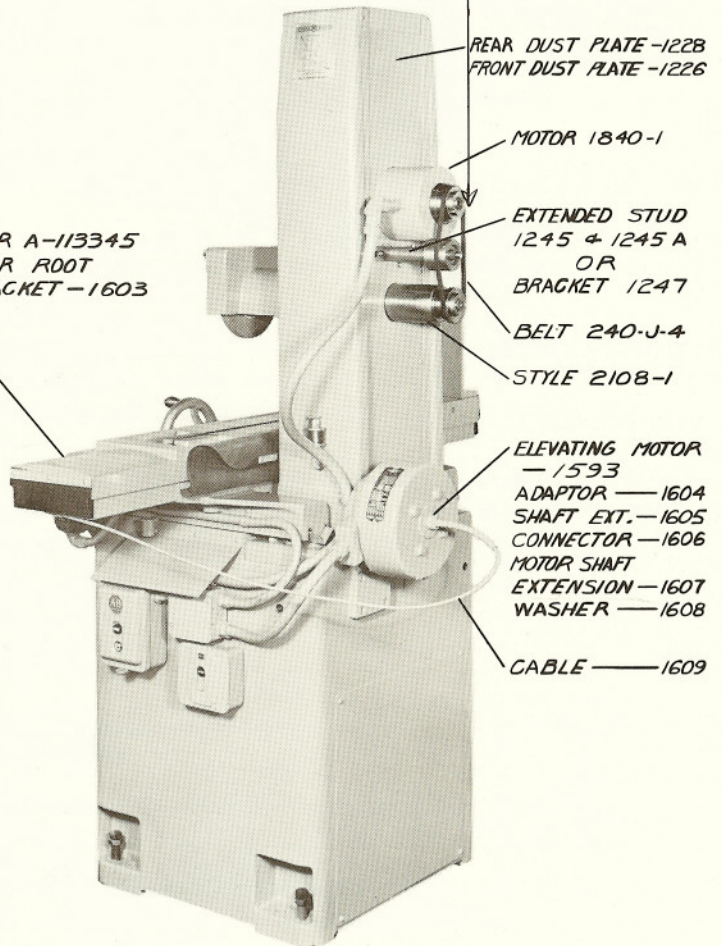
(BELT GUARD REMOVED
FOR DISPLAY PURPOSES ONLY)

GUARD STRAP
L.H. - 226
R.H. - 229

GUARD
L.H. - 225
R.H. - 228

- MOTOR-STYLE 2359-A
- PULLEY - 1236
- IDLER PULLEY - 1239
- SNAP RING - 1243
- SNAP RING - 1244
- STUD - 1242
- SHAFT - 1240
- BEARING - 1238
- WASHER - 1211
- PULLEY - 1237
- BELT 240-J-4
- SPINDLE 73 A-4
- APRON STRAPS - 112
113
114
- DUST APRON - 110
- COLUMN ALIGNMENT
ADJUSTING SCREWS
- TAPER PINS - 653

COUNTER A-113345
VEEDER ROOT
BRACKET - 1603



REAR DUST PLATE - 1228
FRONT DUST PLATE - 1226

MOTOR 1840-1

EXTENDED STUD
1245 + 1245 A
OR
BRACKET 1247

BELT 240-J-4

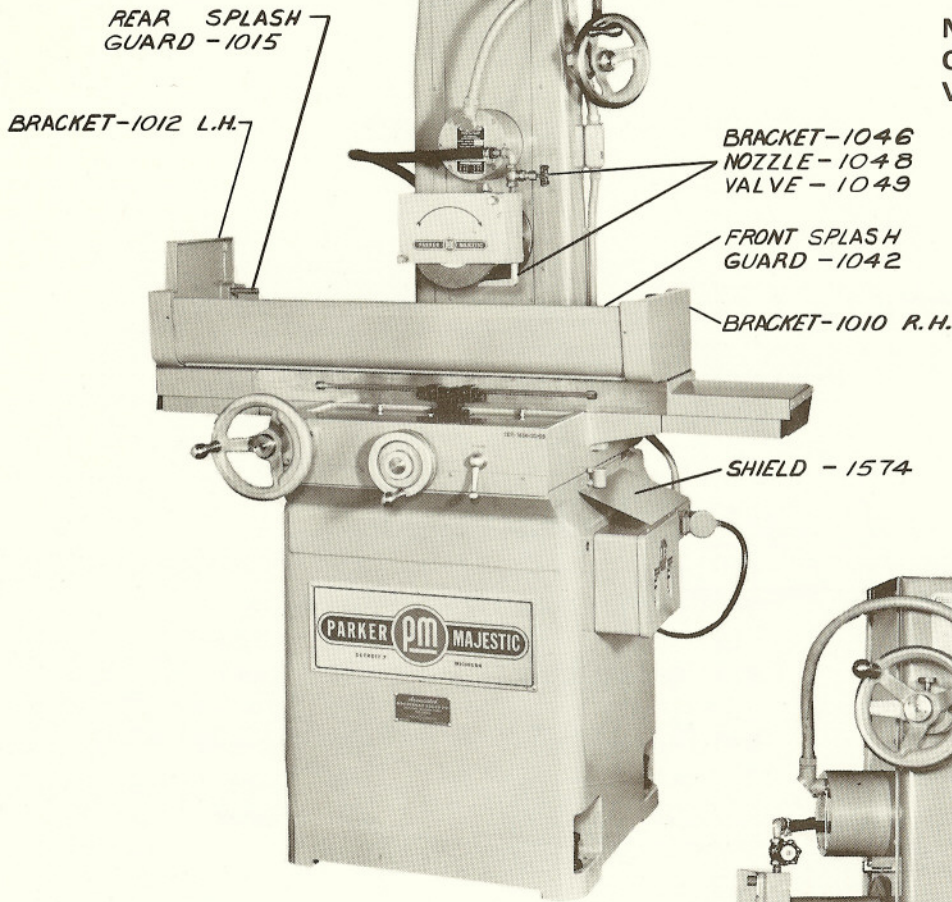
STYLE 2108-1

ELEVATING MOTOR
- 1593
ADAPTOR - 1604
SHAFT EXT. - 1605
CONNECTOR - 1606
MOTOR SHAFT
EXTENSION - 1607
WASHER - 1608

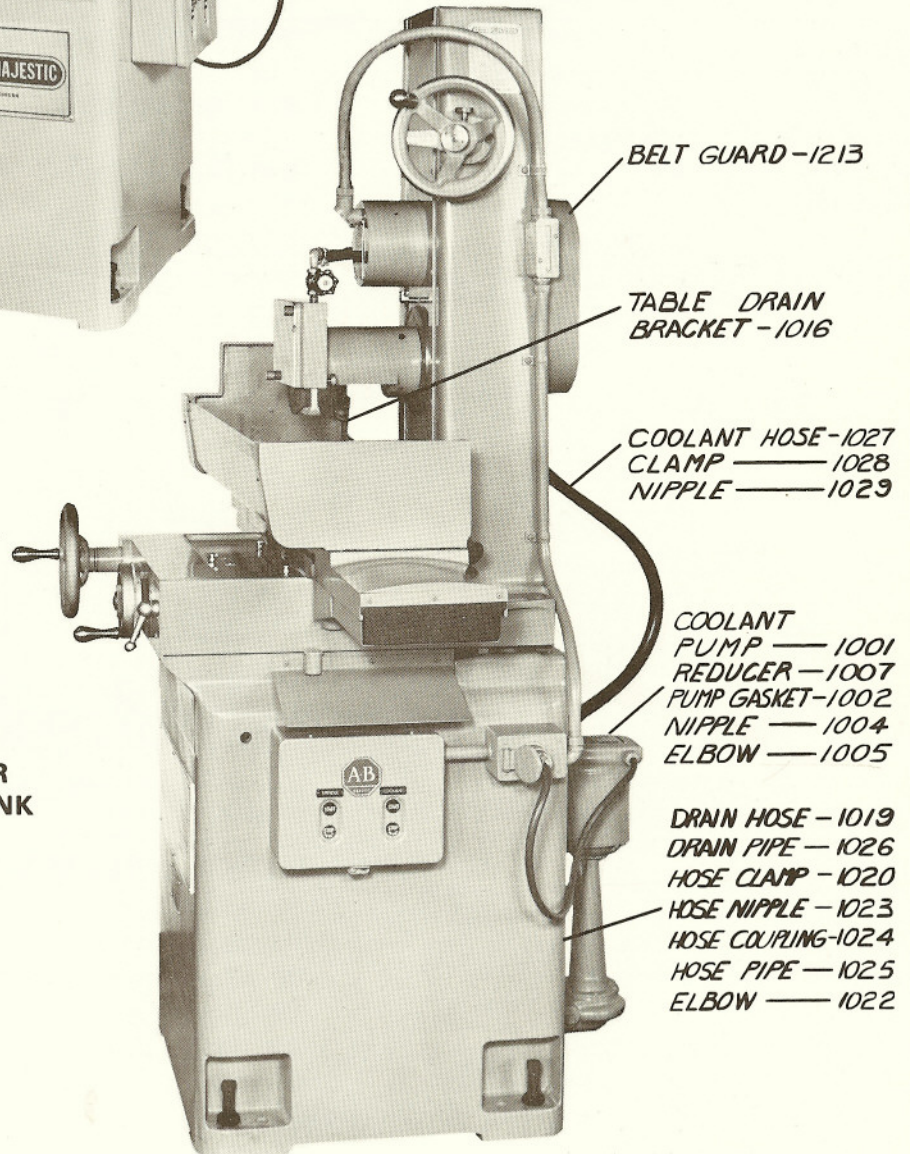
CABLE - 1609

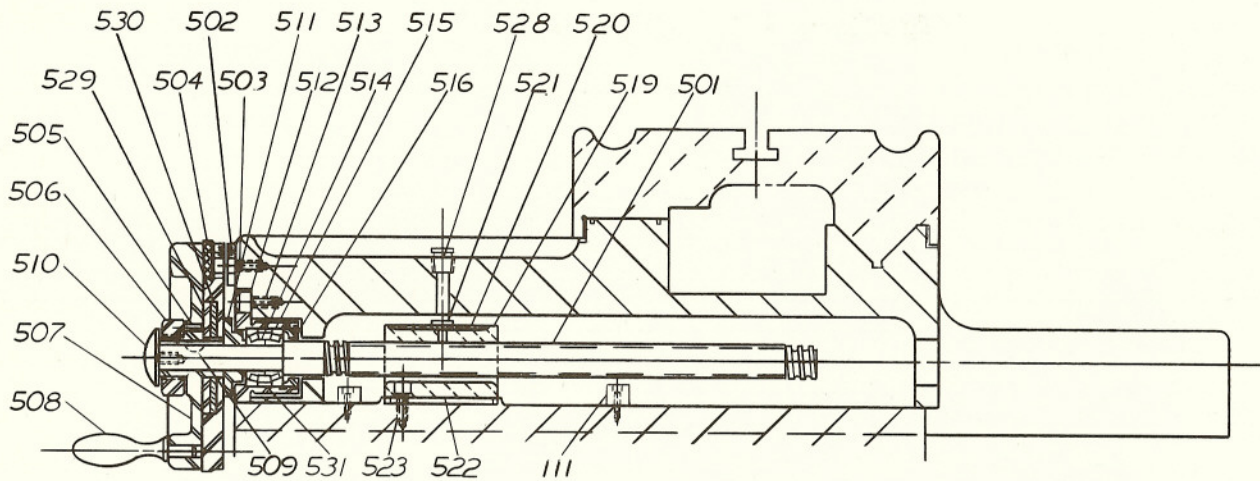
**NO. 2Z SURFACE GRINDER
WITH HI-SPEED SPINDLE**

**NO. 2 SURFACE GRINDER
COOLANT GUARDS,
VALVE AND NOZZLE.**



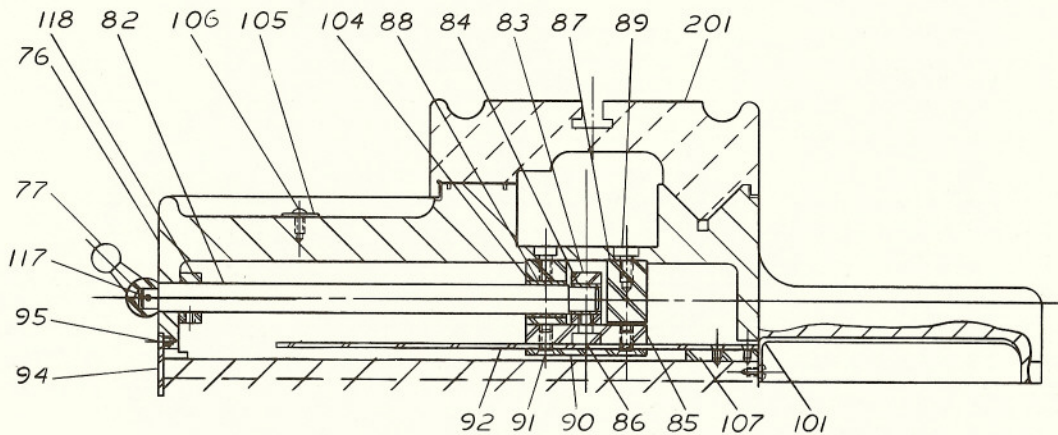
**NO. 2 SURFACE GRINDER
COOLANT PUMP AND TANK**





CROSSFEED ASSEMBLY

501	Screw	511	Stop	521	Clip
502	Vernier	512	Bearing Cage	522	Key
503	Vernier Screw	513	Screw	523	Screw
504	Vernier Dial	514	Bearing Cone	527	Cover
505	Lock Pin		A4059	528	Oiler
506	Lock Nut	515	Bearing Cup	529	Washer
507	Handwheel		A4138	530	Brake
508	Handle	516	Nut	531	Spacer
509	Key	519	Nut		
510	Screw	520	Oil Pad		



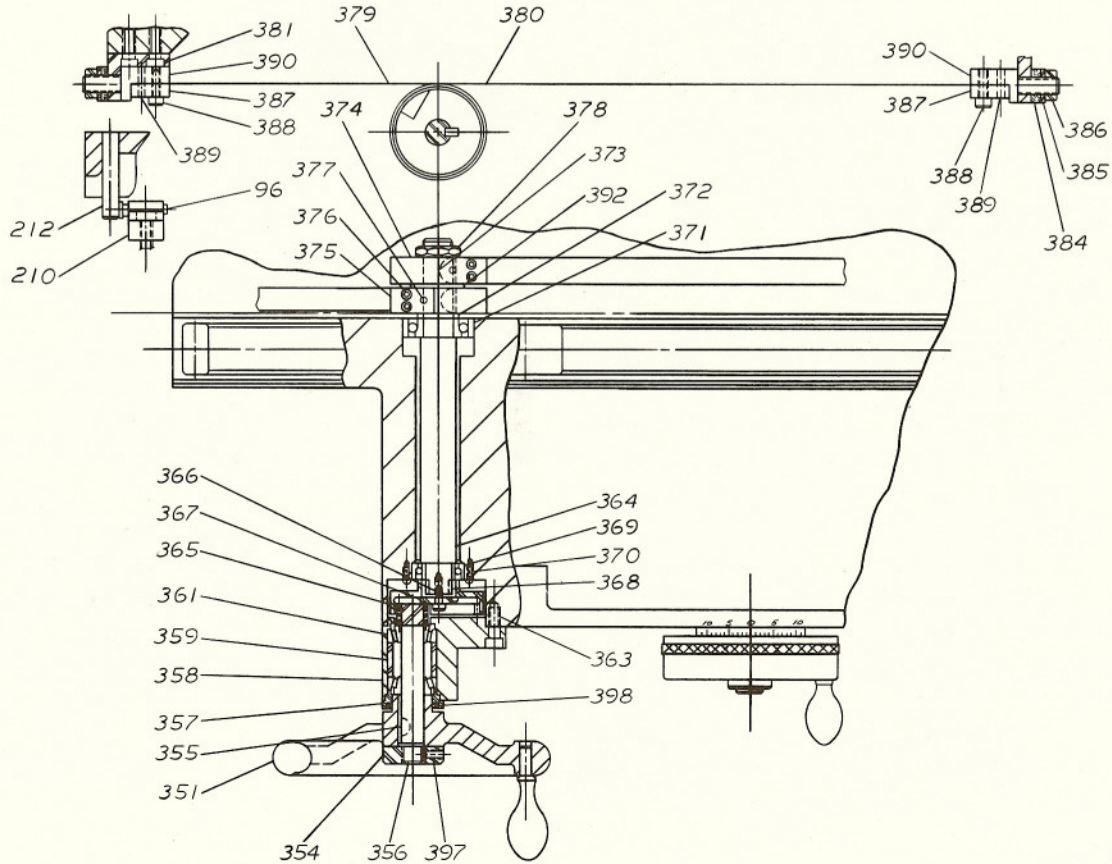
SADDLE LOCK ASSEMBLY

76	Casting	87	Body	95	Screw
77	Lever	88	Bushing	98	Roller
82	Shaft	89	Screw	101	Guard L.H.
88	Block	90	Plate	104	Body
84	Bushing	91	Screw	111	Saddle Stop
85	Plate	92	Plate	118	Collar
86	Screw	94	Guard	201	Table

HANDWHEEL AND TAPE DRIVE

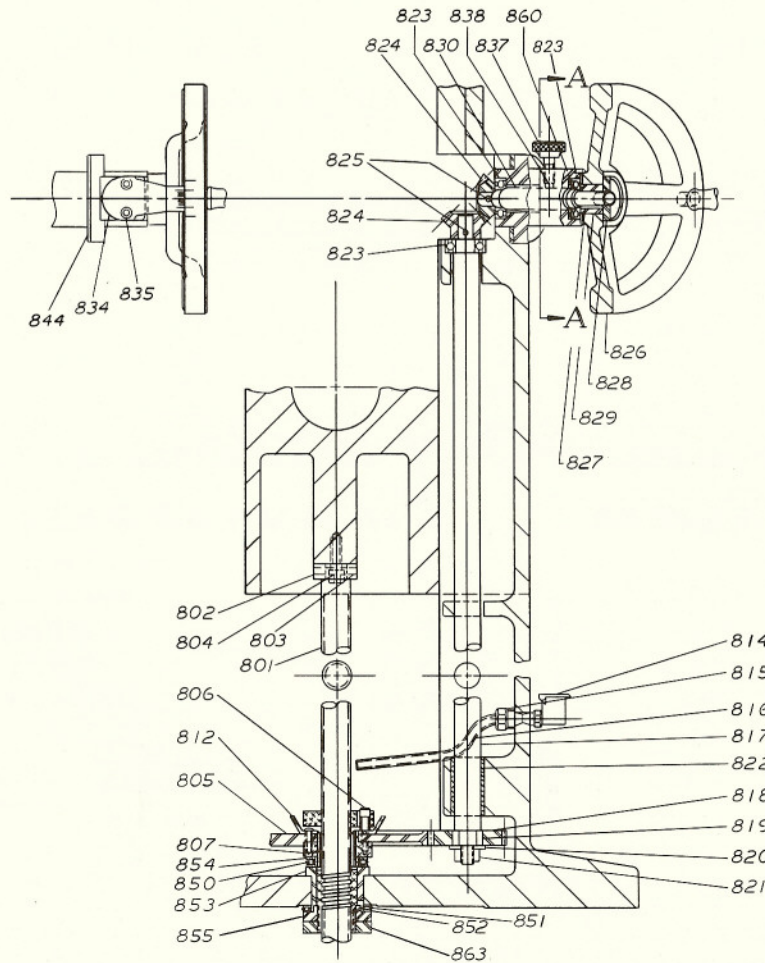
Table Feed

NOTE: Tapes must be parallel to vee-way. Measure from roll in vee to edge of tape for alignment - - then clamp.



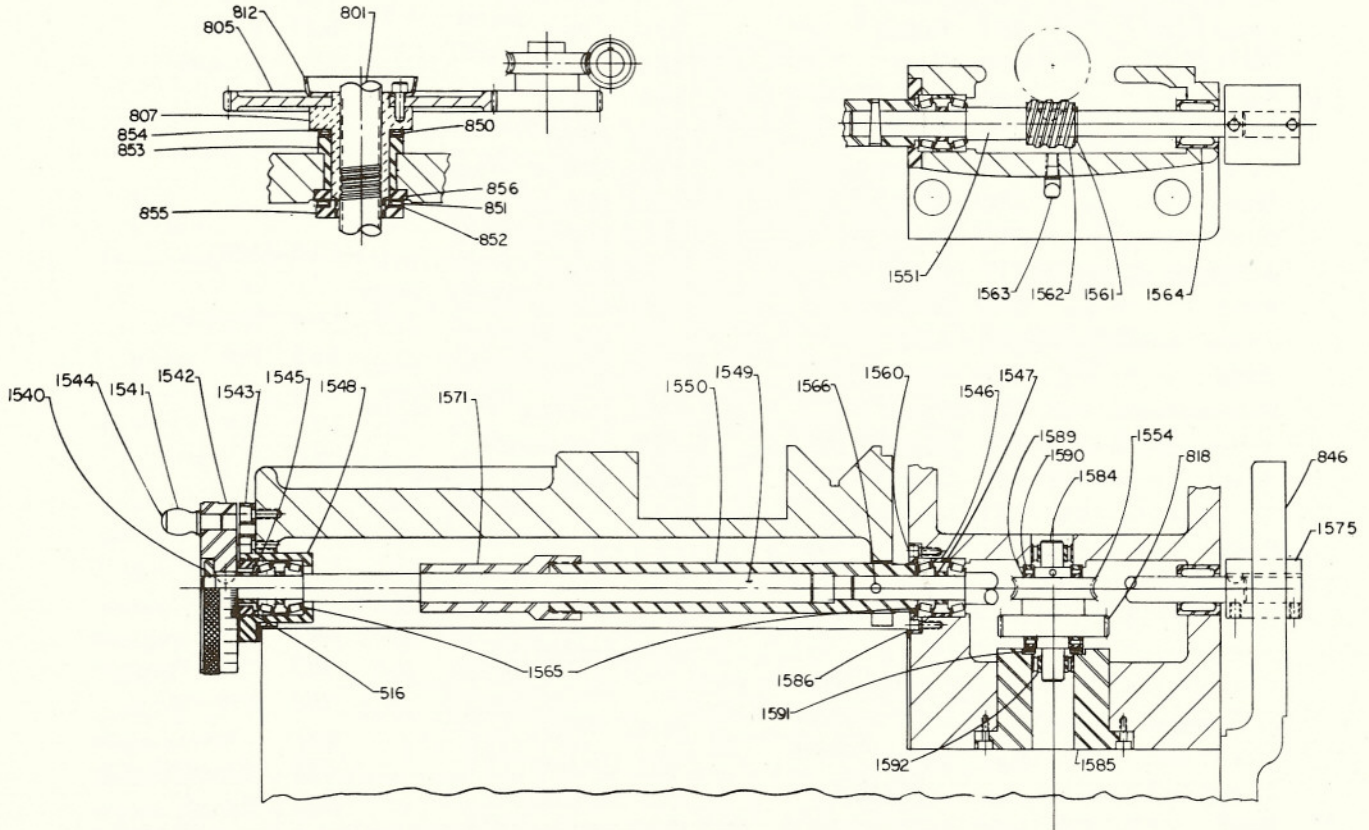
96 Bumper	369 Bearing	386 Half Hex Nut
210 Riser	203KTT	387 Lock
212 Pin	370 Screw	388 Screw
351 Handwheel	371 Bearing	389 Pin
354 Nut	204KTT	390 Screw
355 Key	372 Spacer	392 Spacer
356 Pinion	373 Key	387 Set Screw
357 Locknut	374 Tape Drum	398 Seal
358 Gear Housing	375 Drum Clamp	No. 63098
359 Spacer	376 Screw	
361 Bearing	377 Pin	
A4138/A4059	378 Jam Nut	
363 Screw	379 Tape	
364 Shaft	380 Tape	
365 Int. Gear	381 Block	
366 Screw	382 Screw	
367 Washer	384 Rubber Washer	
368 Key	385 Washer	

ELEVATING ASSEMBLY — UPPER HANDWHEEL



801	Screw	824	Gear	851	Bearing
802	Coupling	825	Gear Pin		NTA2435
803	Pin	826	Handwheel	852	Washer - (2)
804	Bolt	827	Key	853	Bushing
805	Gear	828	Nut	854	Washer - (2)
806	Bolt	829	Bushing	855	Nut
807	Nut	830	Shaft	856	Washer
812	Retainer	834	Pointer	857	Oil Line
814	Oiler	835	Screw	858	Spacer
815	Pipe Fitting	836	Oiler	859	Safety Nut
816	Oil Line	837	Screw	860	Spring
817	Shaft	838	Brake	861	Adapter
818	Gear	840	Screw	862	Indicator
819	Key	842	Housing	863	Jam Nut
820	Washer	844	Spacer		
821	Shaft Nut	845	Spacer		
822	Bushing	846	Bracket		
823	Bearing	850	Bearing		
	7202W		NTA2233		

ELEVATING ASSEMBLY — LOWER HANDWHEEL



801	Elevating Screw	1541	Knob	1562	Worm Gear
805	Gear-Elev. Scr.	1542	Handwheel	1563	Oil Cup
807	Elevating Nut	1643	Indicator	1564	Multirol Brg.
812	Oil Retainer	1544	Pin	1565	Taper Roller Brg.
846	Bracket	1545	Spacer	1566	Sel-Loc. Pin
850	Needle Thrust Brg.	1546	Spacer	1571	Spline Sleeve
851	Needle Thrust Brg.	1547	Spacer	1575	Coupling
852	Needle Brg. Race	1548	Brg. Cage	1584	Drive Gear
853	Bushing	1549	Spline Shaft	1585	Bushing
854	Needle Brg. Race	1550	Sleeve	1586	Brg. Clamp Plate
855	Locknut	1551	Shaft	1589	Needle Brg. Race
856	Washer	1554	Worm Gear	1590	Needle Thrust Brg.
1516	Locknut	1560	Cap Ser. #10-32	1591	Spring
1540	Locknut	1561	Snap Ring	1592	Needle Brg.



Details in Numerical Order

BASE AND SADDLE

Det.	Name
1	Base
12	Name Plate
14	Level Bolts
17	Felt Lub
18	Felt Lub
76	Casting
77	Lever
82	Shaft
83	Block
84	Bushing
85	Plate
86	Screw
87	Body
88	Bushing
89	Screw
90	Plate
91	Screw
92	Plate
94	Guard
95	Screw
96	Bumper
98	Roller
99	R. Spring
100	Oiler
101	Guard L.H.
104	Body
105	Name Plate
106	Screw
107	Riser Block
110	Apron
111	Saddle Stop
112	Strap
113	Strap
114	Strap
115	Cover Plate
117	Pin
118	Coller
119	Riser Block
120	Oiler

TABLE

Det.	Name
201	Table
202	Guard
204	Roller
209	Oiler
210	Riser
212	Pin
213	Screw
214	Nut
215	Block
217	Nut
218	Bracket
220	Arm
225	Guard L.H.
226	Plate
228	Guard R.H.
231	Guard L.H.
233	Guard R.H.

TABLE FEED

Det.	Name
351	Handwheel
354	Nut
355	Key
356	Pinion
357	Locknut
358	Gear Housing
359	Spacer
361	Bearing A4138/A4059
363	Screw
364	Shaft
365	Int. Gear
366	Screw
367	Washer
368	Key
369	Bearing 203KTT
370	Screw
371	Bearing 204KTT
372	Spacer
373	Key

374	Tape Drum
375	Drum Clamp
376	Screw
377	Pin
378	Jam Nut
379	Tape
380	Tape
381	Block
382	Screw
384	Rubber Washer
385	Washer
386	Half Hex Nut
387	Lock
388	Screw
389	Pin
390	Screw
392	Spacer
397	Set Screw
398	Seal No. 63098

CROSSFEED

Det.	Name
501	Screw
502	Vernier
503	Vernier Screw
504	Vernier Dial
505	Lock Pin
506	Lock Nut
507	Handwheel
508	Handle
509	Key
510	Screw
511	Stop
512	Bearing Cage
513	Screw
514	Bearing Cone A4059
515	Bearing Cup A4138
516	Nut
519	Nut
520	Oil Pad
521	Clip

522	Key
523	Screw
527	Cover
528	Oiler
529	Washer
530	Brake
531	Spacer

COLUMN

Det.	Name
653	Pin
654	Nut
657	Pin
668	Guide
670	Guard
672	Guard
674	Guide
676	Guard
681	Cube
689	Cube Plate
694	Column
697	Cover
698	Wheel Guard
699	Guard
700	Screw

UPPER HANDWHEEL ASSEMBLY

Det.	Name
801	Screw
802	Coupling
803	Pin
804	Bolt
805	Gear
806	Bolt
807	Nut
812	Retainer



Details in Numerical Order (Cont'd)

814 Oiler
 815 Pipe Fitting
 816 Oil Line
 817 Shaft
 818 Gear
 819 Key
 820 Washer
 821 Shaft Nut
 822 Bushing
 823 Bearing 7202W
 824 Gear
 825 Gear Pin
 826 Handwheel
 827 Key
 828 Nut
 829 Bushing
 830 Shaft
 834 Pointer
 835 Screw
 836 Oiler
 837 Screw
 838 Brake
 840 Screw
 842 Housing
 844 Spacer
 845 Spacer
 846 Bracket
 850 Bearing NTA2233
 851 Bearing NTA2435
 852 Washer
 853 Bushing
 854 Washer
 855 Nut
 856 Washer
 857 Oil Line
 858 Spacer
 859 Safety Nut
 860 Spring
 861 Adapter
 862 Indicator
 863 Jam Nut

COOLANT

Det. Name

1001 Pump
 1002 Gasket
 1004 Nipple
 1005 Elboe
 1007 Reducer
 1010 Bracket L.H.
 1012 Bracket R.H.
 1015 Guard
 1016 Drain
 1019 Hose
 1020 Clamp
 1022 Elbow
 1024 Coupling
 1025 Pipe
 1026 Pipe
 1027 Hose
 1028 Clamp
 1029 Nipple
 1042 Guard
 1045 Tank
 1046 Bracket
 1048 Nozzle
 1049 Valve

MULTI-SPEED UNIT

Det. Name

1211 Washer
 1213 Guard
 1214 Stud
 1215 Knob
 1216 Speed Chart
 1218 Gib
 1226 Guard
 1228 Guard
 1236 Pulley
 1237 Pulley

IDLER UNIT

Det. Name

1238 Bearing
 1239 Pulley
 1240 Shaft
 1241 Spring
 1242 Stud
 1243 Snap Ring
 1244 Snap Ring
 1246 Belt Guard
 1247 Bracket
 1445 Base
 1447 Diamond

LOWER HANDWHEEL

Det. Name

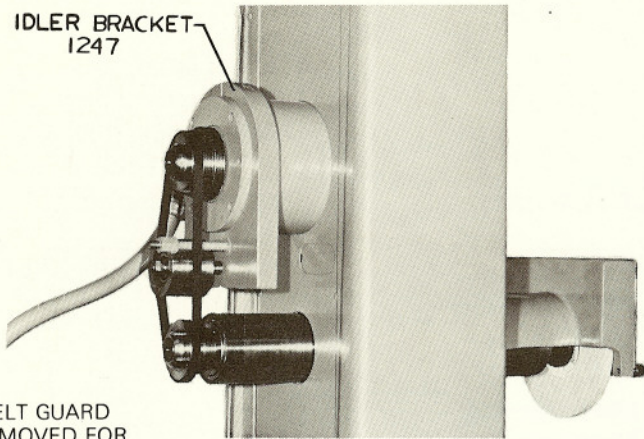
1540 Locknut
 1541 Knob
 1542 Handwheel
 1543 Dial
 1544 Pin
 1545 Spacer
 1546 Spacer
 1547 Spacer
 1548 Cage
 1549 Spline
 1550 Sleeve
 1551 Shaft
 1561 Ring
 1562 Worm
 1564 Bearing MO-10
 1565 Bearing
 A4059/A4138
 1571 Spline and Sleeve
 1574 Shield
 1575 Coupling
 1583 Bracket
 1584 Gear Assembly

1586 Clamp
 1589 Bearing Race
 1590 Needle Bearing
 NTA1423
 1592 Bearing Ace
 1593 Motor
 1594 Bearing B1280H

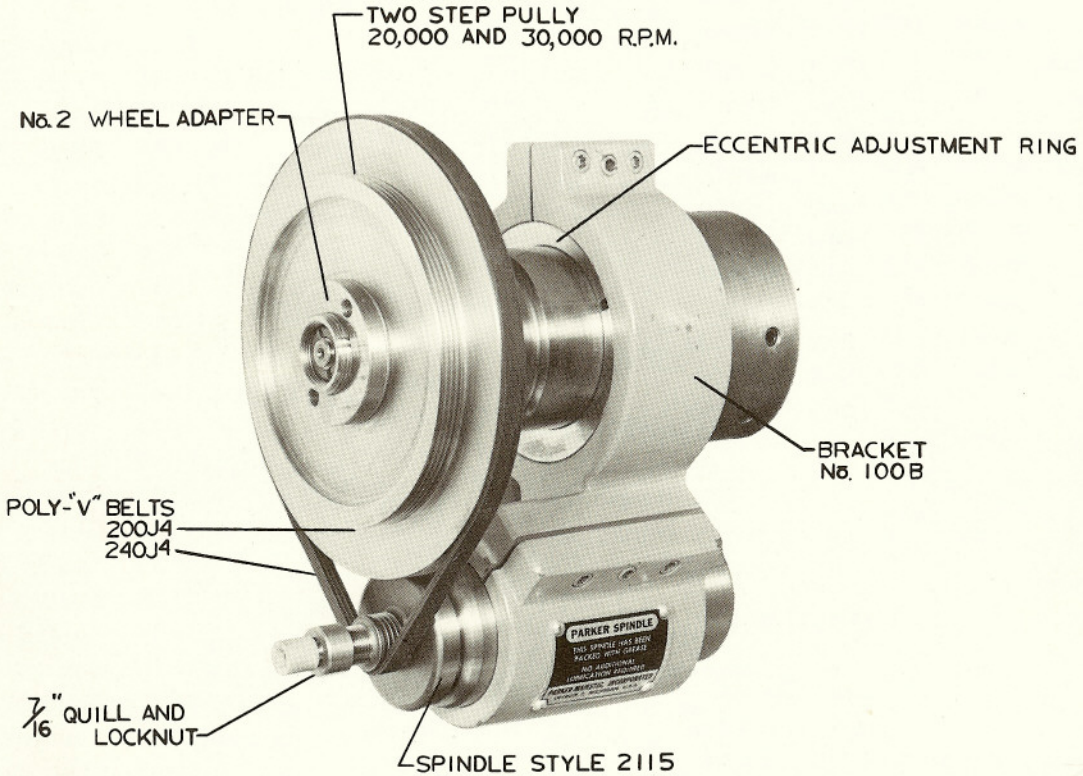
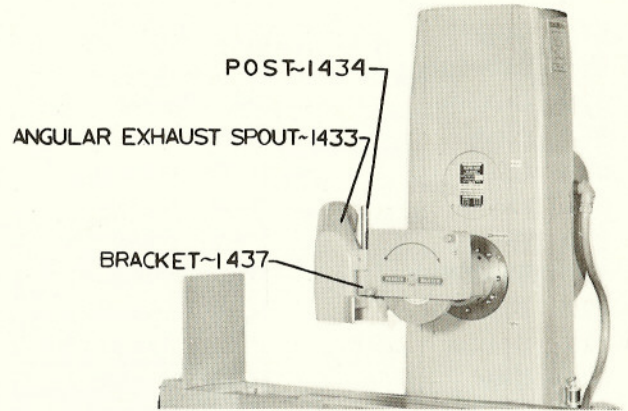
SERVICE PARTS

Det. Name

21 Pinion Shaft
 396 Rack
 524 Ring
 524 Ring
 525 Sleeve
 526 Cap
 1047 Exhaust Bracket
 1433 Exhaust Spout
 1434 Post
 1437 Bracket
 1547 Handwheel Spacer
 1552 Cage
 1553 Cage
 1554 Gear
 1555 Spacer
 1556 Spacer
 1558 Shaft
 1570 Cap
 1571 Spline
 1601 Counter
 1603 Bracket
 1604 Extension
 1606 Connector
 1607 Shaft
 1608 Washer
 1609 Cable



(BELT GUARD REMOVED FOR DISPLAY PURPOSES ONLY)



FOR STYLE 2115 SPINDLE

7/16 SERIES Z = 7/16			
No.	R	P	J
1	1/4	1	1/8-40 x 3/4
3	1/4	2	1/8-49 x 3/4
7	3/8	1½	1/8-40 x 3/4
11	3/8	3½	1/8-40 x 3/4
14	7/16	2	3/16-32 x 1
14A	7/16	1	3/16-32 x 1
17	7/16	3	1/4-20 x 1
17A	7/16	1	1/4-20 x 1

FOR STYLE 79AL SPINDLE

5/8 SERIES Z = 5/8			
No.	R	P	J
25	5/16	2	1/8-40 x 3/4
27	3/8	2	1/8-40 x 3/4
29	3/8	3½	1/8-40 x 3/4
34	1/2	2	1/4-20 x -
34A	1/2	1	1/4-20 x 1
36	1/2	3½	1/4-20 x 1
37	5/8	2	1/4-20 x 1
40	5/8	4	1/4-20 x 1

**NOTE: FOR MOUNTED WHEELS.
NO. 10 L.H. COLLET CHUCK
FOR STYLE 2115.
NO. 11 L.H. COLLET CHUCK
FOR STYLE 79AL.**